

THINK BRICK AWARDS 2017





Contents

- 4 Welcome
- 6 Jury Members 2017
- 9 Horbury Hunt Commercial Award
- 19 Horbury Hunt Residential Award
- 33 Bruce Mackenzie Landscape Award
- 43 Kevin Borland Masonry Award
- 53 Robin Dods Roof Tile Excellence Award
- 62 Horbury Hunt Commercial Award Entrants Index
- 62 Horbury Hunt Residential Award Entrants Index
- 63 Bruce Mackenzie Landscape Award Entrants Index
- 64 Kevin Borland Masonry Award Entrants Index
- 64 Robin Dods Roof Tile Excellence Award Entrants Index



EDITOR ELIZABETH MCINTYRE
CREATIVE DIRECTOR SALLY WOODWARD
ART DIRECTION NATASHA SIMMONS

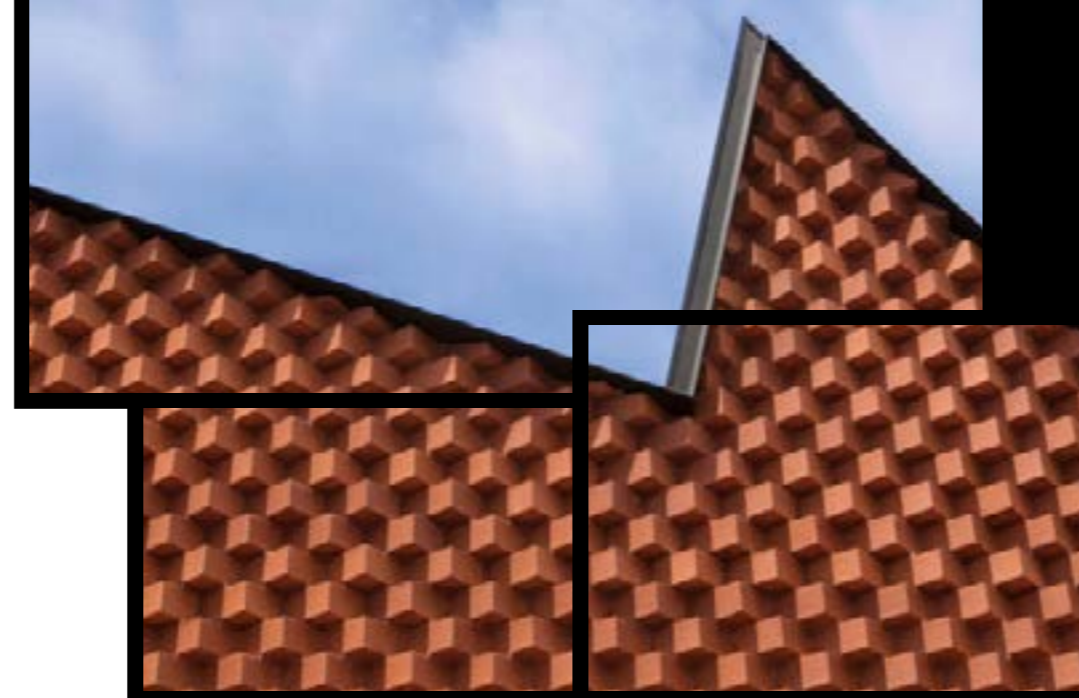
Welcome

This year marks the eleventh Think Brick Awards – celebrating outstanding architecture and the use of clay brick, concrete masonry and roof tiles in contemporary Australian design. Each year, the entries build on inspiration taken from the previous cohort of finalists to present exemplary projects that use these materials in new and exciting ways.

The 2017 finalists provide solutions to low-density housing, a variety of roof systems and landscape sanctuaries for the home. These innovative projects show that masonry is being included increasingly in residential and commercial interiors, as well as to create clever connections between indoor and outdoor spaces. Glazed bricks continue to be featured as standout elements in all types of works, particularly in urban design.

This year's winners are to be congratulated for their imagination, skill and craftsmanship. I hope these projects ignite your creativity and encourage the creation of your own designs championing the use of brick, block, pavers and roof tiles.

ELIZABETH MCINTYRE
GROUP CEO
THINK BRICK, CMAA, RTAA



Creativity
IS PIERCING THE MUNDANE
to find the *marvelous.*
- Bill Moyers

Jury Members

THINK BRICK AWARDS, 2017



CAMERON BRUHN
ARCHITECTURE MEDIA

Cameron Bruhn is the editorial director at Architecture Media. Before his appointment as editorial director Cameron was the editor of Artichoke and Landscape Architecture Australia magazines. Cameron holds a Bachelor of Architecture from the University of Queensland and is an Adjunct Associate Professor in the University's School of Architecture. He is the co-editor of The Forever House and The Terrace House, both published by Thames and Hudson and was a co-creative director of This Public Life, the 2015 Australian Festival of Landscape Architecture and How Soon is Now, the 2016 Australian National Architecture conference.

The Think Brick Awards celebrate great design, brilliant products and exemplary workmanship, and how these collaboratively shape Australia's built environment.



BEN GREEN
TZANNES

Ben has worked on a large number of significant projects across a wide range of scales and types in both Australia and the UK. This includes small alterations and additions to family homes, hospitality and commercial interiors, residential apartment buildings and significant master planning and urban design projects.

Major projects include the award winning Brewery Yard Project, Opera Residences at 71 Macquarie Street, Darling North at Darling Square, the Cranbrook Junior School and a number of significant family homes in Sydney.

The awards process represents an ongoing investigation of the role that masonry construction plays in architectural language, memory and meaning.



DEBBIE-LYN RYAN
MCBRIDE CHARLES RYAN

Debbie Ryan is the founding owner of McBride Charles Ryan. With her singular design abilities, acute sense of composition and extensive product knowledge, Debbie has earned a wide and well-deserved reputation. Debbie's work has been published widely and has led to Debbie being recognised as a public speaker and critic of design. Under Debbie's leadership, the firm has won numerous awards including World Architecture awards for many of their projects. McBride Charles Ryan's projects have been published across numerous influential magazines and the company was also the subject of a documentary by the ABC titled 'Life Architecturally'.

This is an exceptional program with a vigorous judging process, and the concluding celebration is a wonderful 'night of stars.'



ALEXIS SANAL
SANALARC

Alexis Sanal is a co-founder of SANALarc. She has received awards for her architectural/urban design contributions to the community. Her passion is learning, cultural and civic environments that blend digital technologies intelligently with the physical and natural environment. Alexis is currently leading research in Istanbul street markets structure, the Pazar and is a member of Bomontiada's creative board for a district wide public realm realisation.

Clearly the awards series has advanced design excellence and I expect this vibrant dialogue will pioneer further innovation and new horizons.



MURAT SANAL
SANALARC

Murat Sanal's professional efforts focus on design as a force for quality in built environments relevant to their context, construction technology and sustainable opportunities. Murat's love of natural beauty of light, materials unique integrity and tectonics as a form of human expression, combined with his background in computational design and sustainable systems, underpins the firm's commitment to realising architectural excellence. Murat is currently pioneering new horizons for Istanbul's concrete construction sector as well as continues to contribute to studio juries at Istanbul's leading architectural departments.

The awards focus on the important relationship between materials and the completed project, in built environments created with passion.



EMMA WILLIAMSON
CODA

Emma is a co-founder and Director of CODA, a multi-disciplinary practice based in Western Australia working across urban design, architecture and interiors. The practice is driven by the need to make a positive contribution to the lives of its clients and has grown a portfolio of built and research works that have led it to be recognised as one of Australia's most innovative practices. Emma is regularly invited to contribute to conversations and lectures about our developing built environment. She was the founding Chair of the National Committee for Gender Equity for the Australian Institute of Architects and is an Adjunct Senior Research Fellow at Monash University.

Exploring so many fantastically diverse projects through the Think Brick Awards program is an amazing privilege.



ELIZABETH MCINTYRE
THINK BRICK

Prior to joining Think Brick, Elizabeth has held marketing director positions with Walt Disney Television, the Australian Jockey Club and Sports and Entertainment Limited. Elizabeth played a key role in evolving Ford's V8 Supercar program to convert sponsorship to sales of Ford performance vehicles.

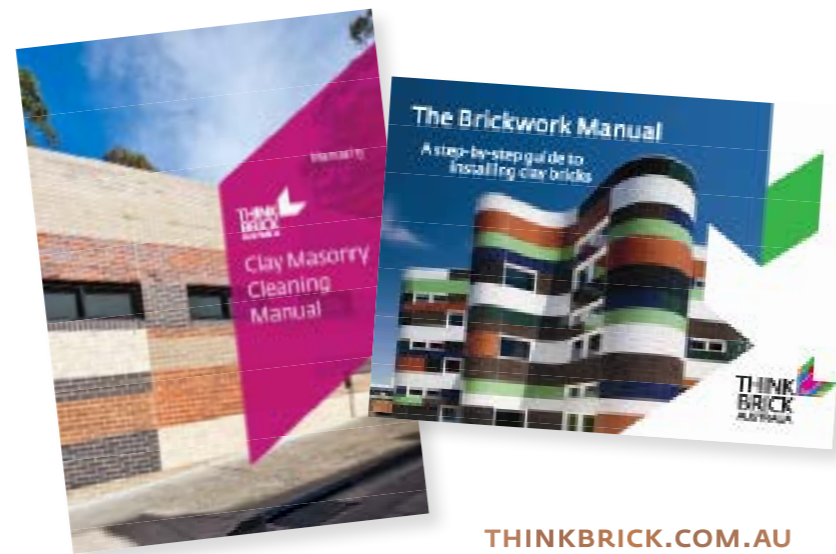
Elizabeth is a graduate member of the Australian Institute of Company Directors, a Director of Building Products Innovation Council and Chief Executive of the Concrete Masonry Association of Australia and Roofing Tile Association of Australia.

Technical Manuals

Think Brick and CMAA both offer technical manuals covering a range of areas in clay brick and concrete masonry design and construction. Targeted at architects, engineers and builders, these manuals are available free of charge on each organisation's website.



CMAA.COM.AU



THINKBRICK.COM.AU

Horbury Hunt Commercial Award

This award was initiated by the Horbury Hunt Club and by request from architects and designers. The award's purpose is to honour innovation and craftsmanship in brickwork and to recognise the contribution of architects, builders, bricklayers and manufacturers in that process.

The Horbury Hunt Commercial Award category includes built projects that exemplify outstanding craftsmanship and innovation through the use of clay face brick and pavers. The award is named after John Horbury Hunt (1838–1904), a renowned architect who came to Australia from America in 1863. Hunt was known for introducing his distinctive and radical architecture to Sydney and rural New South Wales, including St Peter's Anglican Cathedral in Armidale, and Convent of the Sacred Heart and Tivoli in Rose Bay.

Think Brick Australia represents Australia's clay brick and paver manufacturers.

Think Brick's purpose is to ensure clay brick is recognised as a pre-eminent building material by leading architects, developers, builders and property owners. We are committed to promoting exemplary building and landscape design using clay bricks and pavers.

We create national campaigns to inspire designers, builders and consumers to use clay brick as a contemporary, versatile and inspiring building material.



WINNER

Barkers Road Townhouses

KUD

This outstanding project in Melbourne's Hawthorn East comprises 19 luxurious townhouses, with communal and secluded private landscaped areas, over a basement carpark.

A fundamental focus of the project was the incorporation and delivery of the unique external facade elements and internal features. This involved detailed craftsmanship for the elaborate feature brickwork, comprising perforated brickwork patterns to north-facing main bedroom windows, extensive feature brick corbelling and stack-bond brickwork.

In addition to the characteristic brickwork, the external walls are clad with a mixture of spotted gum, bluestone tiles and feature overlooking screens.

MANUFACTURER Bowral Bricks
BRICK COLLECTION Brahman Granite, Austral Bricks 140 series block
BUILDER Southstar Homes
CONTRACTOR Ghan Bricklaying



"The well crafted brickwork successfully challenges scale and provides clever screening, characterised by beautiful patterns and layered textures. This is an intelligent and humble project."

- 2017 Jury -

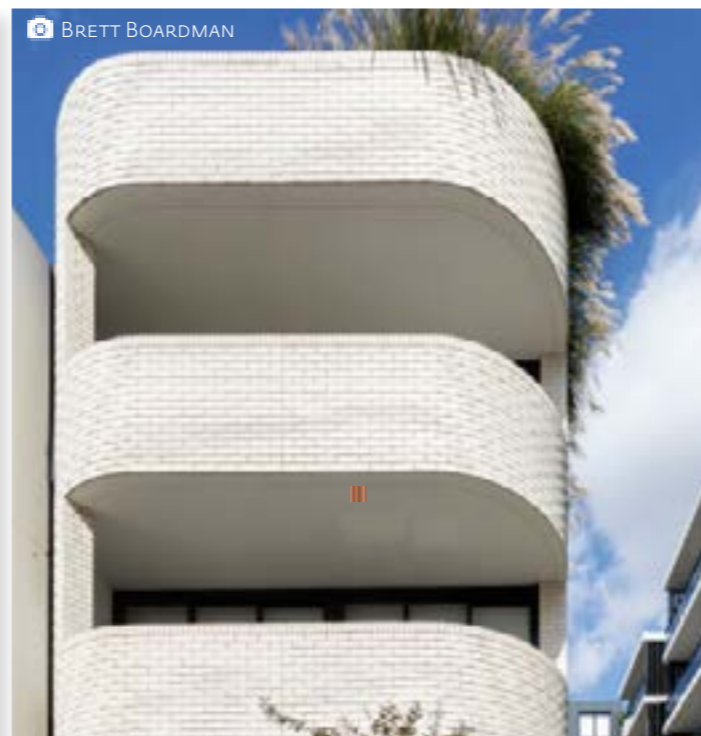
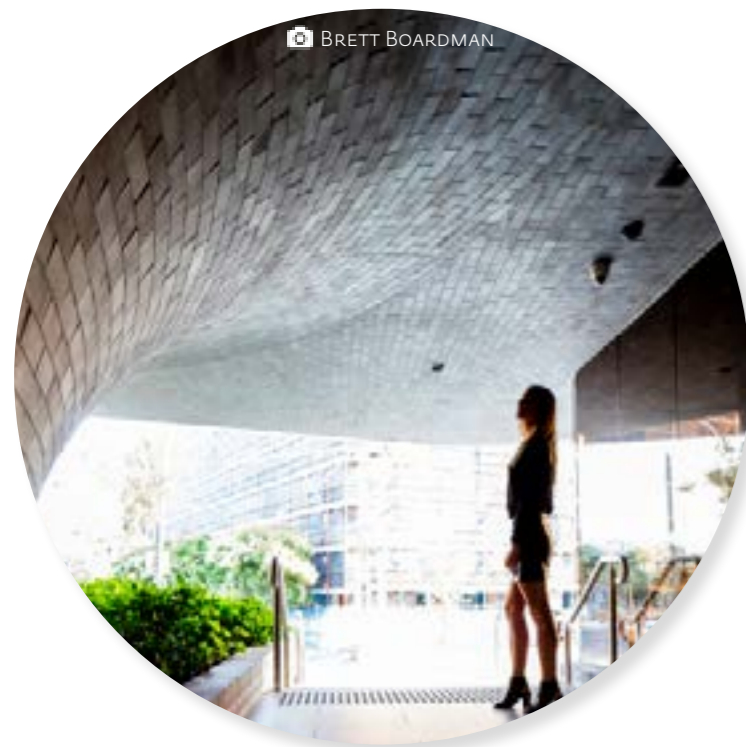


Eve

DKO ARCHITECTURE

"Textural brickwork has been used to create a dynamic building with a grand entry; successfully delivering contemporary, high-end luxury housing that references the area's historic use of brick."

- 2017 Jury -



FINALIST

Eve is located in the heart of Sydney's Erskineville. The relationship between the site and the surrounding suburb is intrinsic to the project's design language and in particular its use of brickwork. The project is conceived, designed and shaped as a response to a range of local elements, such as the distinctive curved corner treatment on numerous local buildings, along with an honest and robust materiality.

A sensuous curve in the textural brickwork is punctured by sharply framed balcony slots, forming a dynamic interplay of vertical and horizontal movements. The dynamic form of the entry arch is generated by a curve that swoops up and down to the ground in brickwork tiles. It is one of a number of contextual responses, recalling the distinctive brick arch of a nearby rail underpass and the

old brick kilns that once existed in the neighbourhood. It bookends Macdonald Street and re-enforces Eve as the gateway building to the Ashmore neighbourhood.

A series of "stoops" at the street edge provide a front door and garden to all the ground-floor apartments. This is an integral aspect of the scheme and is driven by the need to activate the street and provide an environment that facilitates social encounters.

MANUFACTURER Austral Bricks & Bowral Bricks
BRICK COLLECTION La Paloma/Miro, Bowral Blue
BUILDER Andrew Thackray
CONTRACTOR Richard Crookes Constructions



FINALIST

"This project is beautifully proportioned and well executed. The traditional building form provides a sense of familiarity, while the brick turned on its edge adds texture and character."

- 2017 Jury -

Northlakes Vet Hospital

VOKES AND PETERS



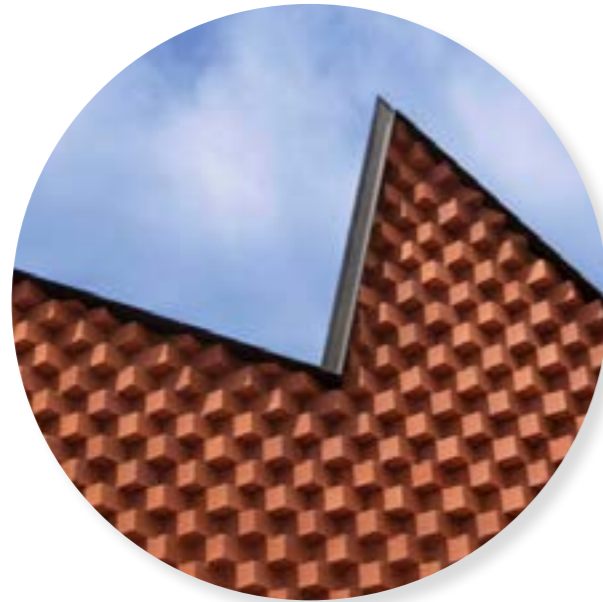
Northlakes Vet Hospital is a new veterinary hospital constructed to provide specialist medical care for a range of animals. Situated among neighbouring tilt-up concrete buildings, the Northlakes Vet Hospital establishes a positive street presence while also making provision for a secluded courtyard garden at the entry to the building, offering visual relief to the occupants as they make use of the public areas of the new facility.

The austere, textural, brick external cladding is intended to provide a robust skin to the

building, registering light and shadow and conveying a sense of solidity and visual coherence. Glazed dormer windows are visible above the brick datum, giving the building a memorable street presence and acting as lantern-like forms at night when the building is operated as an emergency care facility.

MANUFACTURER PGH Bricks & Pavers
BRICK COLLECTION Lifestyle/Thredbo
BUILDER Rohrig
CONTRACTOR Brien Bricklaying

FINALIST



Block Branding HQ

BOSSKE ARCHITECTURE

Block Branding's new North Perth Headquarters transforms an old mechanic's workshop into a commercial office tenancy. Located adjacent to a service station in a nondescript area of office development, this project "spills out" into the streetscape via an extension that looks like a brick starburst. Referencing the special-offer branding sticker (synonymous with advertising), the shape is projected over the corner of the building, encompassing multiple architectural elements - a saw-tooth room, an entry pathway, a trellis wall and car park courtyard.

Designed to grab attention, the form deliberately contrasts the old with the new, respecting the building's history while giving impact to the street address.

Inside, the branding motifs continue, breaking down the scale of the existing space and creating distinct zoning to different parts of the open-plan office. The facade, trellis and footpath capitalise on brick's ability to be both mundane and extraordinary when used in different ways - three styles of brickwork fill the projecting forms to achieve mass, colour and texture, with moments of surprising weightlessness.

BUILDER & CONTRACTOR
McCombie Construction



"Brick has been used in bold and exciting ways to create a strong street presence while respectfully linking new and existing elements."

- 2017 Jury -



Gympie Aquatic Recreation Centre

LIQUID BLU

"This project features an outstanding brick facade with clever motifs and careful openings that help the building behind it sit comfortably in its surrounds."

- 2017 Jury -

The Gympie Aquatic Recreation Centre is an assembly of public buildings and water spaces that aim to satisfy the requirements of the client brief while addressing the complexities of site and its location in suburban regional Queensland. The brick facade and public forecourt are critical components of the design that mediate scale, material and form between the commercial architecture and homes that surround the site.

The detailing of the facade generates necessary relief to the scale of this wall, and also allows natural light and ventilation into the spaces behind as the program requires. The design consists of a combination of full

size and cut, standard, cant and single cant bricks utilised in a Flemish bond pattern. This allows the layering of the circular motif taken from the indoor pool hall ceiling to be continued across the entire length of the wall, while incorporating supergraphics and hit-and-miss screening.

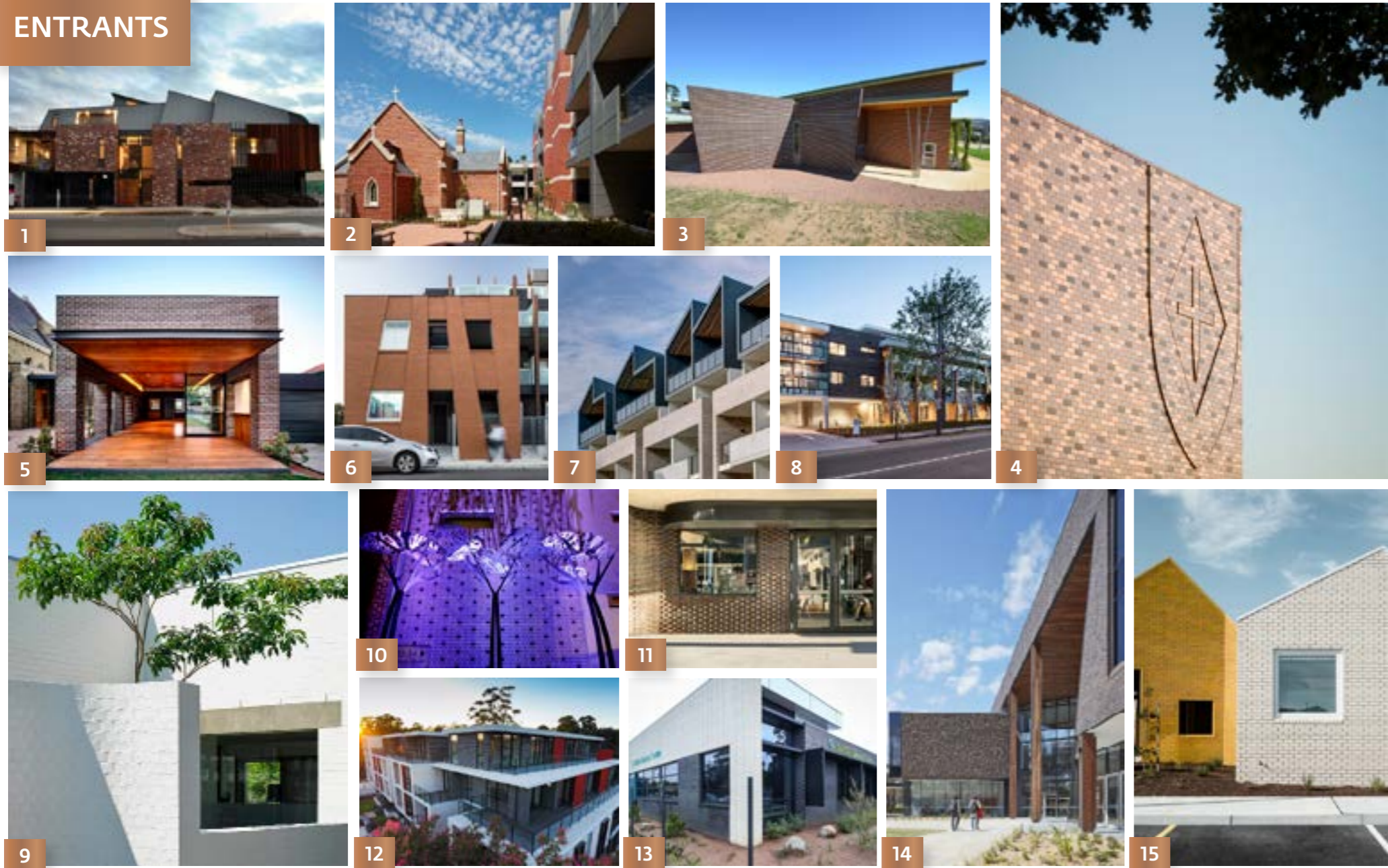
MANUFACTURER Bowral Bricks
BRICK COLLECTION Chillingham White
BUILDER Hutchinson Builders
CONTRACTOR Noosa Bricklayers

FINALIST

CHRISTOPHER FREDERICK JONES



ENTRANTS

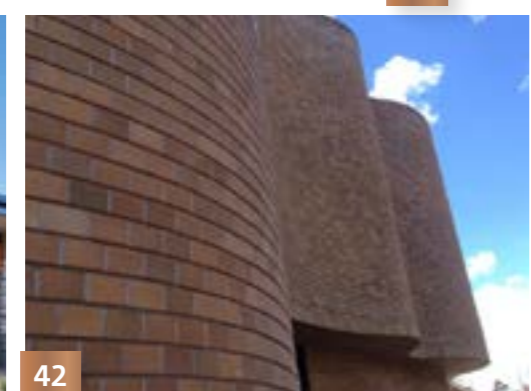
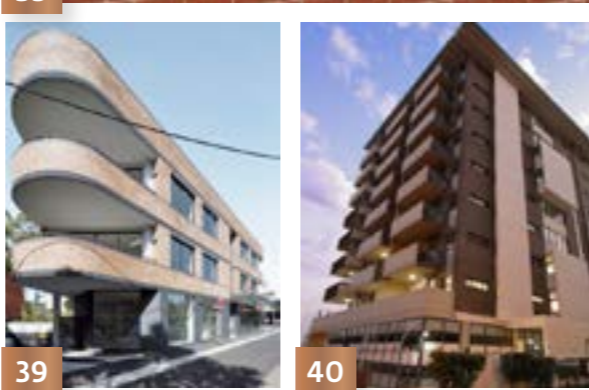
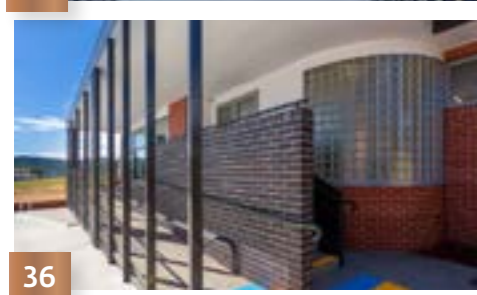
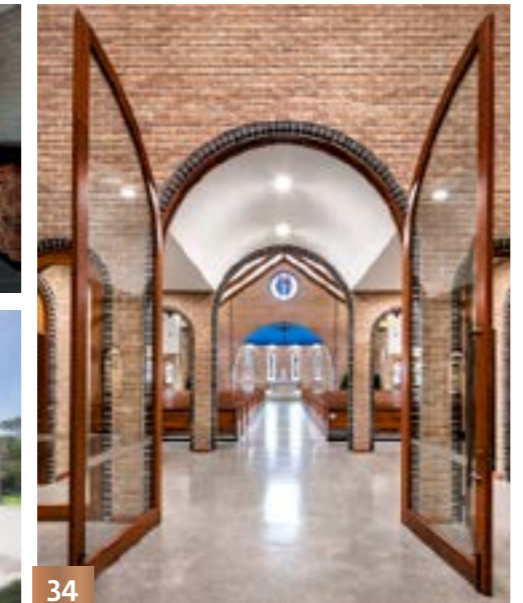


1 DOURO Motus Architecture 2 ST JOSEPHS MEWS AGED CARE Edgard Pirrotta Architects 3 ORANA OVERTURE HALL Paul Barnett Design Group 4 AUSTRALIAN CATHOLIC UNIVERSITY ST. BRIGID'S HEALTH SCIENCES BUILDING Woods Bagot 5 ST MARY'S NARTHEX Matt Gibson Architecture + Design 6 ASPECT WINDSOR Davey Architecture Studio 7 WELLINGTON ON THE PARK, WATERLOO Fox Johnston 8 REGIS EAST MALVERN Smith+Tracey Architects 9 ASPLEY VET Vokes and Peters 10 DORRIEN APARTMENTS Giorgi Group 11 MONASH UNIVERSITY HARGRAVE-ANDREW LIBRARY BKK Architects 12 LAWRENCE STREET PEAKHURST APARTMENTS DKO Architecture 13 BELLFIELD MEDICAL CENTRE Doepel Marsh Architects 14 TRINITY COLLEGE UNIVERSITY OF MELBOURNE SOUTHERN PRECINCT McIldowie Partners 15 ARENA CHILD AND FAMILY CENTRE Dale Cohen Architects



16 BURC COLLEGE Anton Johnson Architect 17 HOLY SPIRIT SEMINARY, HARRIS PARK, NEW SOUTH WALES dwp 18 CHAPMAN GREEN PBD Architects 19 EASTWOOD PRIMARY SCHOOL Crosier Scott Architects 20 AZURE VIL Brickman Architects 21 ST ANDREW'S COLLEGE LEARNING HUB Wilson Architects 22 DISCOVERY CHILD CARE CENTRE Craig Teasdel Architect 23 HONEYSUCKLE DRIVE dwp 24 THE CENTENARY LIBRARY "CHURCHIE" Brand and Slater Architects 25 KING'S COLLEGE WENSLEY WING Wilson Architects 26 ROCKINGHAM HEALTH TRAINING CENTRE iredale pedersen hook architects 27 FOODBANK GERALDTON Eastman Poletti Sherwood 28 ROSE STREET MIXED USE DEVELOPMENT ESSENDON C.Kairouz Architects 29 ELECTRA HOUSE Studio Nine Architects

ENTRANTS



Horbury Hunt Residential Award

This award was initiated by the Horbury Hunt Club and by request from architects and designers. Its purpose is to reward innovation and craftsmanship in brickwork and to recognise the contribution of architects, builders, bricklayers and manufacturers in that process.

The Horbury Hunt Residential Award category includes built residential projects that exemplify outstanding craftsmanship and innovation through the use of clay face brick and pavers. The award is named after John Horbury Hunt (1838–1904), a renowned architect who came to Australia from America in 1863. Hunt was known for introducing his distinctive and radical architecture to Sydney and rural New South Wales, including St Peter's Anglican Cathedral in Armidale, and Convent of the Sacred Heart and Tivoli in Rose Bay.

30 BYFORD SECONDARY COLLEGE, STAGE 2 Donaldson + Warn 31 ROSE STREET RICHMOND Jackson Clements Burrows Architects 32 HAY PARK SPORTS PAVILION Kent Lyon Architect 33 CHARLES STURT UNIVERSITY PORT MACQUARIE CAMPUS BVN 34 HOLY FAMILY CHURCH DE ANGELIS Taylor & Associates 35 DEMPSEY BUILDING Paul Barnett Design Group 36 GLEBE HILL FAMILY PRACTICE Cykel architecture 37 WESTERN DISTRICTS RUGBY FOOTBALL CLUB Richards and Spence 38 WILLETTON SENIOR HIGH SCHOOL REDEVELOPMENT STAGE 2 Hassell 39 NEWTOWN DEVELOPMENT Nick Bell Architects 40 BELMONT ST, SUTHERLAND Gledhill Constructions 41 RIVERLAND ORAL HEALTH CENTRE Grieve Gillett Andersen 42 UNIVERSITY OF NEW ENGLAND, ARMIDALE Francis-Jones Morehen Thorp 43 KEMPSEY CRESCENT HEAD SURF LIFE SAVING CLUB Neeson Murcutt Architects 44 PENINSULA PRIVATE HOSPITAL REDEVELOPMENT- STAGE 1 Billard Leece Partnership

WINNER

House Au Yeung

TRIBE STUDIO ARCHITECTS

House Au Yeung is a postwar bungalow that has been adapted for the times with a garden pavilion and a series of decorative flourishes. It features a crafted brick "sunburst," painted timber panelling and rooms coloured for warmth and wit.

A new rear extension grows out of the existing roof form, with new accommodation shoehorned underneath. Manipulation of levels allows this to be largely imperceptible from the street. The rear is treated with as much care, attention and whimsy as the original decorative brickwork of the front facade, reflecting an inversion of suburban values from "best face forward to street" to focus on the leisure of the back garden and entertaining areas.

The materials palette of the local context is referenced and preserved, with low-lying terracotta roofs folding over hips and brick gables. Inside and out are linked via an open-plan living and dining room, which becomes a kind of garden room with fence-like wall cladding, lots of glass and a floor plane that extends out into the greenery of the yard.

MANUFACTURER Bowral Bricks
BRICK COLLECTION Shorthorn Mix
BUILDER & CONTRACTOR Daniel Girling-Butcher
STRUCTURAL ENGINEER Cantilever Consultants



KATHERINE LU



"This sensitive yet quirky house design uses brick in unexpected ways, elevating it from the conventional to something that is quite special. The brickwork is charmingly crafted and finessed."

- 2017 Jury -



Byron Bay House & Studio

VOKES AND PETERS

"Brick has been used in a rich and tactile materials palette to create layered spaces and clever wayfinding elements. This spatially complex beach house is a delight."

- 2017 Jury -

Byron Bay House and Studio is a new single-storey house within a suburban subdivision, located at the edge of a low-lying coastal reserve.

The design of the building is principally concerned with two key themes: the importance of nature in the everyday, and exploring the potential for layering of space as an alternative approach to a "pavilion" beach house model. The provision of open space, access to nature and the amenity it brings are critical features of the architectural work. This house is suburban in its immediate condition, but also located at the edge of a significant coastal reserve fronting Tallow Beach. The modest budget combined with the long-term outlook of the middle-aged owners

FINALIST

necessitated that the plan be restricted to a single storey with a compact layout. These constraints encouraged the exploration of an atypical beach house model - the "fat" plan. This is a planning approach that celebrates spatial complexity and nuanced lighting conditions, and employs a rich and tactile material palette to complement the more introverted nature of the building as well as assist in wayfinding.

MANUFACTURER PGH Bricks & Pavers
BUILDER Todd Knaus Constructions
CONTRACTOR Steenson Bricklaying



CHRISTOPHER FREDERICK JONES



LISBETH GROSMANN

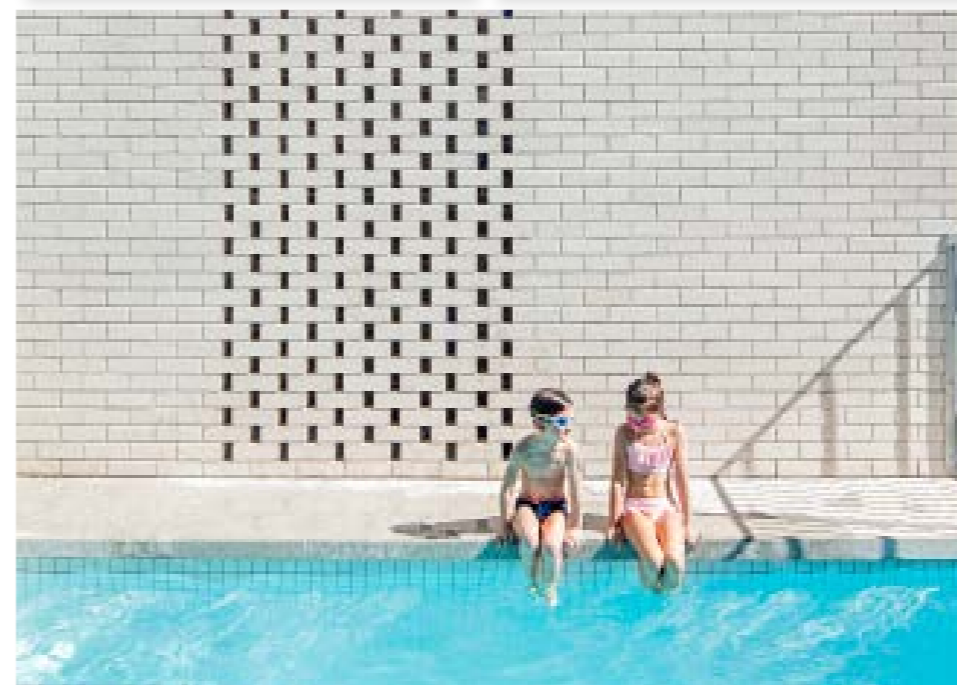
FINALIST

"This project demonstrates the use of salvaged brick to create an addition that references the heritage streetscape while providing generous contemporary living spaces."

- 2017 Jury -

Elsternwick House

CLARE COUSINS ARCHITECTS



This renovation to an introverted Edwardian house has created a generous family home with living spaces immersed in the rear garden. The narrow double-storey addition slips neatly beside the original home, preserving the period heritage streetscape and leaving the entire terracotta roof intact and undisturbed.

Upon entry, the eye is drawn down the period hallway to a framed view of the garden beyond. Blackbutt flooring in the original house inverts to line the ceiling of the addition, the material treatment differentiating the new from the old. New, "extroverted" living zones are located at the rear, taking advantage of northern sunlight and spilling out to enjoy the lush garden space and new swimming pool.

The upper floor of the addition uses salvaged red brick, referencing the prevailing neighbourhood character and the existing dwelling. At ground level, off-white clay brick wraps the garage and drying court before continuing into the interior. The simple second-storey addition perches lightly between the reconstructed garage and the original house, with its blackbutt belly exposed to the occupants below.

MANUFACTURER Bowral Bricks
BRICK COLLECTION Chillingham White, Recycled Brick
BUILDER ProvanBuilt
CONTRACTOR Dual Projects

FINALIST

Fish Creek House

EDITION OFFICE

The Fish Creek House is contained within the singular gesture of a long, continuous, highly textured brick wall. The wall closely wraps three nested, black timber pavilions that offer shelter as they sit upon the lowered wall and gaze out to the undulating landscape that surrounds them.

In responding to an Australian landscape condition it is vital that a conversation or an emotional dialogue emerges between the house, landscape and occupier. In this regard, the house has been intentionally designed to appear as both thoroughly dissonant to its site, and at once entirely and deeply sympathetic to it. Establishing an initial contrast of high solidity with the landscape, the house appears first as a monument, and as foreign to its

surroundings. Upon closer inspection, the robustly solid yet soft and textured walls of the home anchor the building to the site in a manner far deeper than their physical mass alone might suggest.

The architects worked closely with the bricklayers to develop the custom mortar technique that defines the brick wall that wraps the home. This involved tailoring how the bricklayers held their trowels and how they moved across the wall to achieve the textured, swept horizontal mortar lines.

MANUFACTURER Recycled Brick
BUILDER Trease Builders
CONTRACTOR S H & K J Johnston- Bricklayers

"This home features thoughtful transitions between inside and outside, and between brick and timber. With wonderful tones and textures, this is a hearty project that is comfortable in the landscape."

- 2017 Jury -



BEN HOSKING



FINALIST

Ivanhoe House

KUD

"The use of brick in a number of ways, with precise craftsmanship and attention to detail, has resulted in a striking house with gentle curves and considered textural contrasts."

- 2017 Jury -

Located in the inner-Melbourne suburb of Ivanhoe sits a contemporary single-storey house nestled modestly between two comparatively imposing white Edwardian dwellings. This is largely due to the home's low-lying roof line, set against the soaring high pitches of the neighbours', and the contextual use of the off-white stack-bond face brickwork - a borrowed reminder of its suburban locale.

From the front facade the brickwork can be seen used in two different ways: at one side is a rigid, solid framed box that embeds itself into the ground, while on the other side is a cantilevered black mass hovering above the earth. Dividing these two forms is a gentle curve that soars above them. The face brickwork carries through to the interior of the house to provide textual contrast and define spatial functions.

This type of architecture is largely dependent on the acuteness of the execution, so the architects worked closely with the builder for careful set-out of the openings and the elongated gentle curve against the rigid stack-bond grid walls, to achieve a high level of precise craftsmanship. This sharpness gives the project an enhanced reading of form and balance.

MANUFACTURER Austral Bricks
BRICK COLLECTION La Paloma/Miro
BUILDER Alliance Building Company
CONTRACTOR Solid Brick

Brickface

AUSTIN MAYNARD ARCHITECTS

"Recycled red brick has been used with coloured, glazed bricks to create an addition that is playful and inventive, while still respectful of the neighbourhood character."

- 2017 Jury -

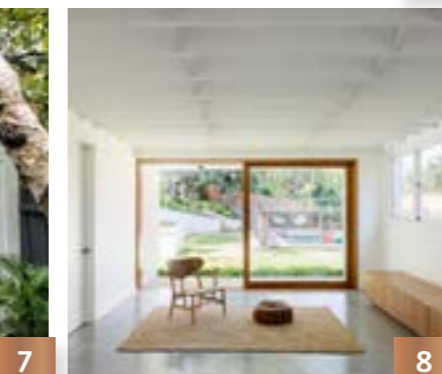
Brickface is a compact building situated at the rear of an existing house in Richmond, Melbourne. It consists of a garage at ground level, a studio/guest bedroom on the first floor, and a roof deck (productive garden). The main living area in the existing house faces south and opens up onto the new terrace and pool, where the view is to the rising high wall of Brickface.

Brickface is constructed of recycled red brick, interspersed with contrasting red and blue glazed bricks from the PGH Vibrant range to introduce light and shadow, pattern and colour. The building's round windows and the sculptural form of the parapet combine with the character of the recycled brick to soften the solid block.

FINALIST

The structure sits hard up to a laneway on two sides, in a corner position. The building terminates a row of garage doors and newer outbuildings that appear to tumble down the hill. It is a solid and secure bookend, presenting a character that looks as if it existed well before the other buildings along the lane.

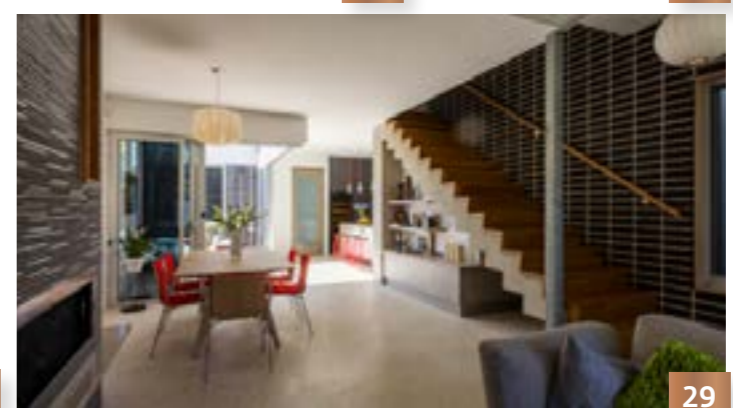
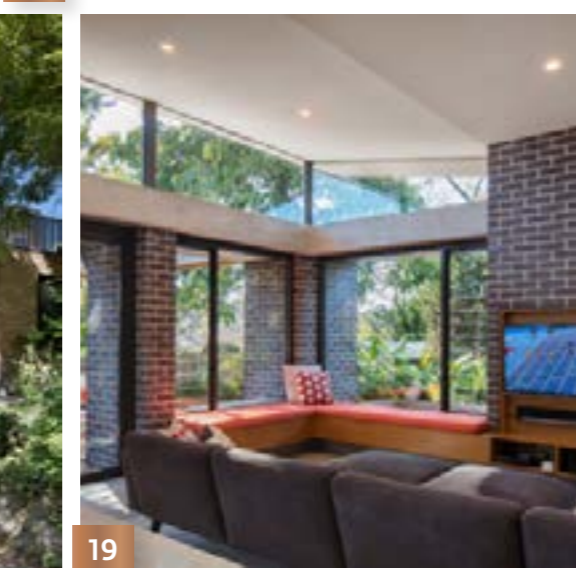
MANUFACTURER PGH Bricks & Pavers, Recycled Brick
BRICK COLLECTION Vibrant Range- Rhapsody, Watermelon
BUILDER TCM Building Group
CONTRACTOR Stumac Construction Services



ENTRANTS

1 YORKSHIRE STREET Planning & Design 2 BETTER BUILT HOMES DISPLAY Better Built Homes 3 MCCREDIE RESIDENCE Freadman White Architects 4 HOUSE ON CHELMSFORD KTR Creations 5 MAITLAND HOUSE Kennedy Nolan 6 NEUMANNHAUS ITN Architects 7 BALLANTRAE- ST KILDA WEST Metroworks Architects 8 LINDFIELD HOUSE Tribe Studio Architects 9 BALLANTYNE Foomann 10 D+K HOUSE buck&simple architects

ENTRANTS



11 WATERLOO HOUSE Anthony Gill Architects 12 GARDEN HOUSE Still Space Architecture 13 HAWTHORN HOUSE Robert Simeoni Architects 14 CAWSTON MOUNTFORD ARCHITECTS 15 PRIVY HOUSE ITN ARCHITECTS 16 DARK HORSE ARCHITECTURE ARCHITECTURE 17 BANK STREET PADARC 18 RUFFEY LAKE HOUSE Inbetween Architecture 19 THE DIAMOND PROJECT Michelle Walker Architects 20 POND HOUSE "MARRANDILLAS" Nic Owen Architects

21 ELGIN STREET RESIDENCE Sonelo Design Studio 22 MINDALONG A WORKSHOP 23 SUNNYSIDE PARAGRIG ARCHITECTURE 24 SOUTH MELBOURNE BEACH HOUSE TOPOLOGY STUDIO 25 DOLCE LANE KLOPPER & DAVIS ARCHITECTS 26 MAYFAIR STREET RESIDENCE KLOPPER AND DAVIS ARCHITECTS 27 TOODYAY SHACK A WORKSHOP 28 FIFTY FIFTY ARCHITECTURE ARCHITECTURE 29 HOUSE ON SUMMERS MHPA STUDIO ARCHITECTURE 30 WILSTON BUNGALOW PUSH

ENTRANTS



31



32



33



34



35



36



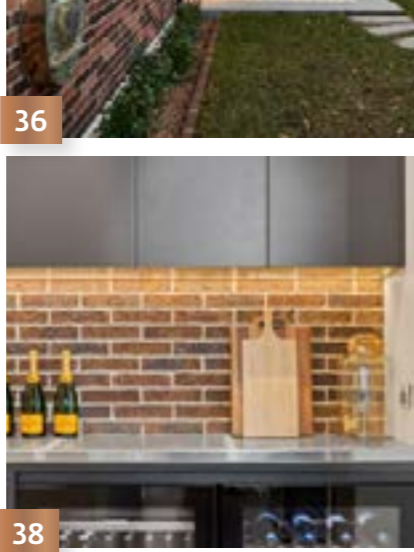
37



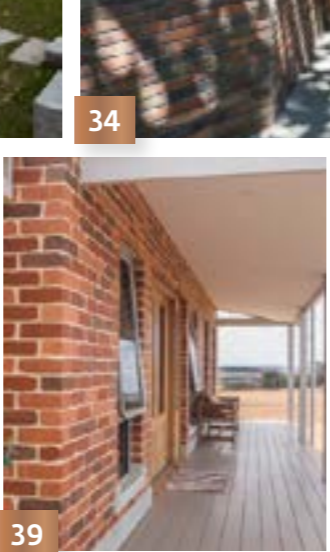
38



39



40



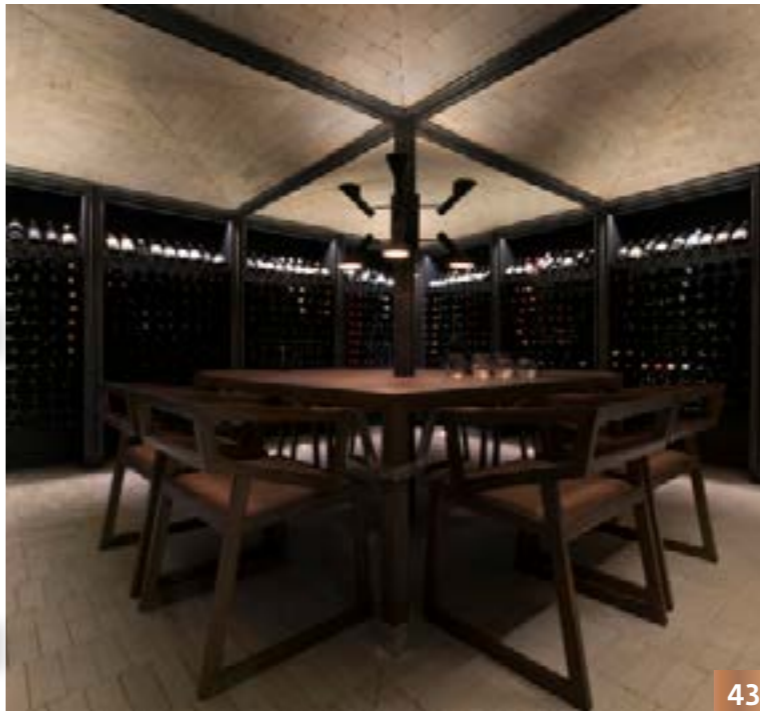
41



42



43



44



45



46



47



48



49



50



51

31 FORD STREET HOUSE Chalk Studio 32 CASA REGGI Parvenu Architectural 33 TORRENS HOUSE LS Design Construct 34 HOUSE FOR A PLUMBER Pleyzier Perkins 35 DANIEL JORDAN HOMES Daniel Jordan Homes 36 WAIRANGI HOUSE Bijl Architecture 37 DEEPDENE HOUSE Kennedy Nolan 38 PEAK HOUSE Highfields EPS Design 39 CAMPBELL RESIDENCE Steele Campbell Building 40 VOGUE HOMES DISPLAY ORAN PARK Vogue Homes

41 THE FOLKHOUSE Shaun Lockyer Architects 42 ROSE HOUSE Baracco + Wright Architects 43 INDIGO SLAM Smart Design Studio 44 LEEDERVILLE VILLA A Workshop 45 KILLARA Arcestral Designs 46 MANLY HOUSE Trebilcock & Associates Architects 47 STREAMLINE MODERN HOUSE Folk Architects 48 SKS DEVELOPMENTS 49 TRUSS HOUSE Carter Williamson Architects 50 THE SUNTRAP Anderson Architecture 51 GREY STREET HOUSE Local Architecture

ENTRANTS



52



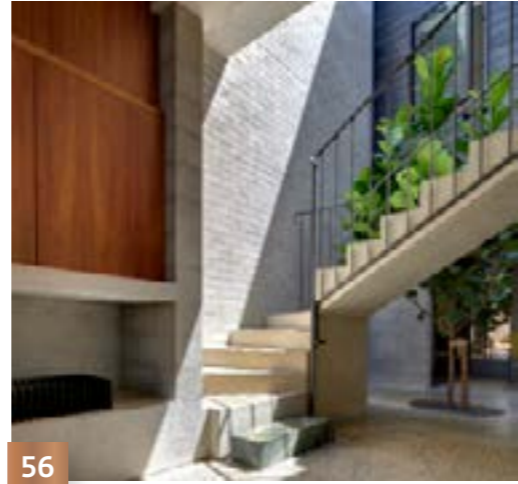
53



54



55



56



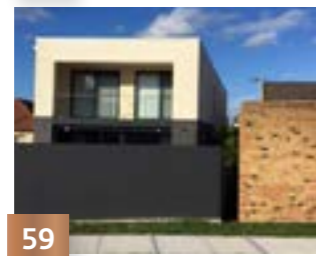
61



57



58



59



60



62



Bruce Mackenzie
Landscape Award

This award was previously part of the Horbury Hunt Award and, in 2013, evolved to include concrete masonry. In 2014 this award was named after renowned Australian landscape architect Bruce Mackenzie AM.

Bruce Mackenzie is responsible for some of Australia's greatest landscape projects, spanning over five decades. He has designed numerous Australian landmarks and has won many design awards, highlighting his great contribution to the landscape design community. In 2011 he wrote and published *Design With Landscape*, his fifty-year journey through landscape architecture. Mackenzie was a founding member of the Australian Institute of Landscape Architects (AILA) and has been a state and national president. He was presented with the AILA Award in Landscape Architecture in 1986, and in June 1999 on the occasion of the Queens Birthday honours list, he was made a member of the Order of Australia (AM)

52 NOOSA HOUSE Stevens Lawson Architects 53 THE ASTON Perceptions 54 BRIGHTON HOUSE Jost Architects 55 KILLARA Junctions90 56 ANNANDALE HOUSE Welsh + Major 57 GIBBON ST STUDIO Channon Architects 58 FAIRWATER 59 CABARITA RD, CABARITA CK Design 60 CRASE STREET Channon Architects 61 MULCONDA HOMESTEAD hrmphrdt architecture 62 BRICK HOUSE Andrew Burges Architects

WINNER

Crescent House

LUKE WATSON + DEICKE RICHARDS

The Crescent House in suburban Brisbane is a renovation and extension of a 1939 postwar weatherboard house. The original construction was a pragmatic, almost austere approach to shelter and the daily functions of life within the home.

The architecture explores the use of brick to connect the dwelling to the ground, providing new crafted living spaces to the north in a series of folded vertical and horizontal planes that extend into the landscape. The brickwork generates stairs, walls, plinths and datums that establish and define new territories for occupation.

The interplay of different brick sizes and bonding patterns, and a hierarchy of scale and texture, delineate particular spaces. Functional and pragmatic areas are defined by a standard brick (230 x 76 millimetre) laid in a stretcher bond, while the response to more intimate and formal spaces uses a finer brick (290 x 50 millimetre) laid in an offset quarter bond. The occupants' experience of th spaces changes throughout the day - and the seasons - with the interaction of light and shadow across the surfaces.

MANUFACTURER Bowral Bricks
BRICK COLLECTION Hereford Bronze, Capitol Red
BUILDER Bev Jenner Constructions
CONTRACTOR Elvis & Rose



"Brick has been used with thoughtfulness and impressive continuity to create intimate spaces within a more expansive landscape. This is beautifully resolved work that adds immense value to the house."
 - 2017 Jury -

Macarthur Place

ASPECT STUDIOS

"Playing with pattern and colour, the designers have used an ordinary material to create an impressive sequence of outdoor spaces that are both elegant and functional."

- 2017 Jury -



FINALIST

Macarthur Place is an urban pocket park in Ultimo, Sydney, nestled between The Goods Line corridor and the future community hub at Darling Square. Designed by ASPECT Studios for Lendlease, the park represents an important link in the chain of public open space connecting Sydney's Central railway station with Darling Harbour.

As this is a place of respite and passive recreation for the residents of the adjacent student accommodation, brick was chosen to create a sense of warmth and fine grain in the space. Bricks were used to reinforce the park's geometry, creating

spaces for gathering and relaxing. Brick is a material with a long history of use in the Ultimo/Haymarket area, and this material choice references surrounding heritage buildings and the semi-industrial nature of the site.

MANUFACTURER Austral Bricks
BRICK COLLECTION Hamlet Paver Collection - Sepia, Blue and Ash
BUILDER Lendlease
CONTRACTOR Regal Innovations/Sam the Paving Man

SIMON WOOD



FINALIST

"Brick has been used to successfully tie the different elements of the fitness hub together and to comfortably ground the hub in its wider park setting."

- 2017 Jury -

Turruwul Park Fitness Hub

JANE IRWIN LANDSCAPE ARCHITECTURE

Turruwul Park Fitness Hub is the first of a network of outdoor fitness facilities to be implemented across the City of Sydney local government area. The hub is located with existing half-courts and a hit-up wall, in the shade of trees at Turruwul Park. Central to the design was the creation of spatial and material continuity with the greater park.

Brick was chosen to add a finer grain to an area with an intimate scale within a broad, fairly homogenous park setting. The handmade quality of the brick complements the clean lines of the in situ concrete forms.

Brick is used to both connect the new hub to the existing internal park finishes and to give the hub a distinct character. The palette of brick, concrete and softfall defines movement and contains the

exercise activity areas. The colours of rich browns and vibrant greens, inspired by the existing fig tree, are repeated across the paved surfaces, seating and custom exercise equipment.

This project uses brick in a number of ways: to create a unique swale that bisects the exercise areas, for step-up and seating walls with scattered green glazed bricks, and on detailed edging to the exercise areas.

MANUFACTURER Bowral Bricks
BRICK COLLECTION Gertrudis Brown
BUILDER & CONTRACTOR Cooper Construction Services



SIMON LONDON

"This intelligent project uses brick for both narrative and function. The longevity and past life of the material is highlighted by the way the bricks emerge from the landscape."

- 2017 Jury -

FINALIST

Sydney Park Water Re-use Project

TURF DESIGN STUDIO & ENVIRONMENTAL PARTNERSHIP

Sydney Park began life as the Bedford Brickworks in 1893; the collection of kilns and chimneys provided a significant contribution to the housing stock of Sydney's inner suburbs and are an iconic reminder of Sydney's brick heritage. The clay brick-making industry operated concurrently as the city's largest waste depot from 1948 until its closure in 1976.

Since its opening in the 1980s, Sydney Park has undergone a succession of improvements culminating in the recent Water Re-Use Project, jointly funded by City of Sydney and the Federal Government. It breathes new life into the park via a series of interconnected "made" systems – a vibrant recreational and environmental asset for inner-city Sydney.

In the shadows of the site's remnant brick kilns, recycled brick is interwoven through the landscape; a subtle palimpsest interwoven with new layers of robust, elemental concrete.

Today, Sydney Park offers an enhanced experience of open space, environment, waterscapes, habitat and history, celebrating the connections between past and current, people and place.

MANUFACTURER Recycled Brick
BUILDER & CONTRACTOR Design Landscapes



SIMON WOOD PHOTOGRAPHY



MEGAN BAYNES/NATHAN CRUMP



FINALIST

The Bends Pool

ROOM 11 ARCHITECTS

"This project stands out for its inventive use of concrete block, monumental appearance and the wonderful way the colour and texture of the material are in conversation with the landscape."

- 2017 Jury -

High above Hobart, on a steep slope with a Ray Heffernan-designed home, sits a beautiful, bespoke blockwork landscape.

The brief called for new landscape architecture elements, including a pool, outdoor living spaces, retaining walls, fences and parking area.

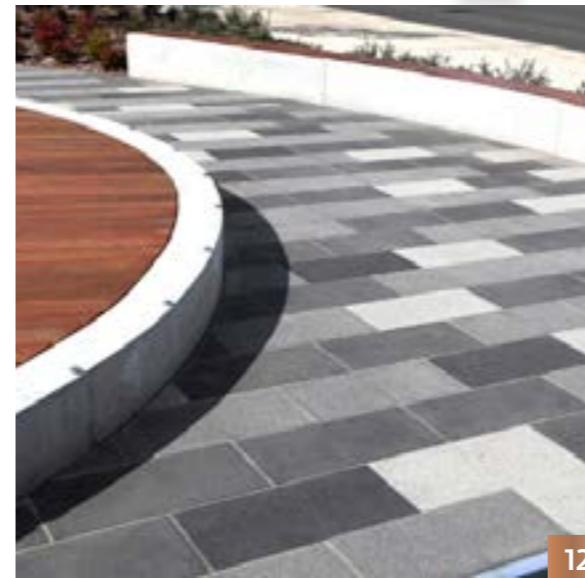
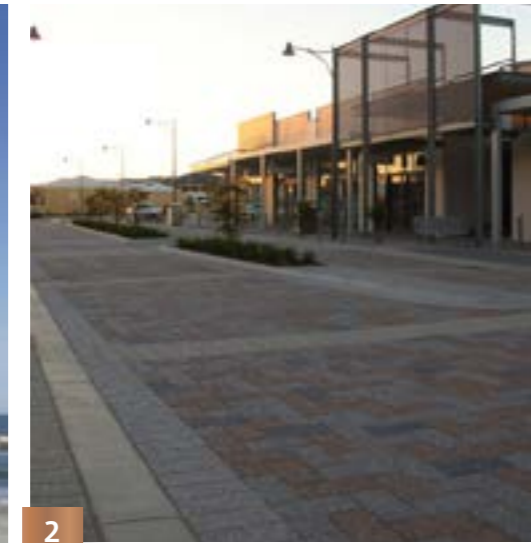
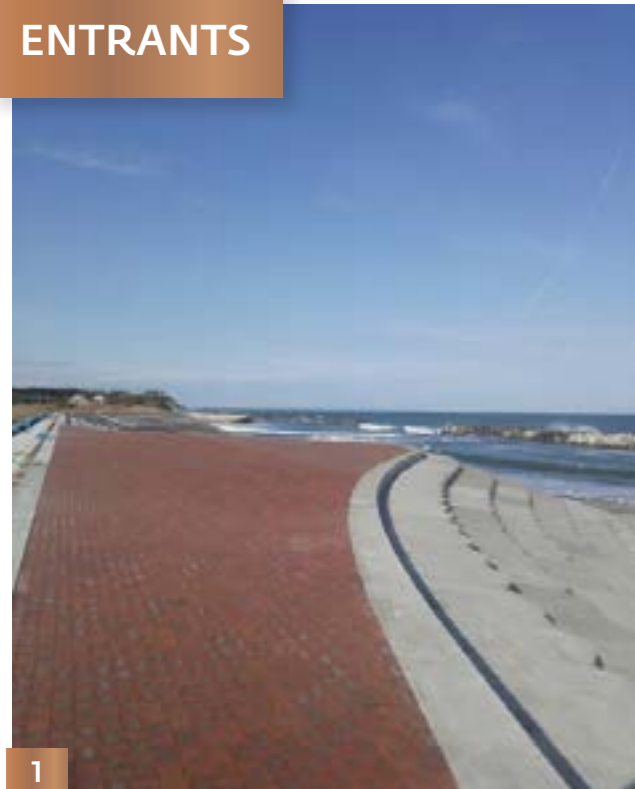
The client and architect shared a desire for a design that was seamless. Blockwork was chosen as a material that could be used to confidently construct all the landscape architecture elements required.

Blocks were used to create a continuous terrain. Vertical surfaces are significant components of the steeply sloping site, and blockwork provides a consistency within the scheme.

The Bends Pool blockwork – pale, sophisticated and fully integrated with the Heffernan House – cleverly and carefully augments the life of the home's occupants with new outdoor elements and experiences.

MANUFACTURER Adbri Masonry
MASONRY COLLECTION Grey Block
BUILDER VO Projects
CONTRACTOR All Brick

ENTRANTS



1 FUKASHIMA REBUILD NTC Consultants 2 PHARLAP PARADE, BALDIVIS SQUARE Folium Landscape Architecture 3 RIVERSIDE DRIVE Green Synthesis Design 4 MASCOT CENTRAL Arcadia Landscape Architecture 5 WULABA PARK Sturt Noble Associates 6 WESTERN SYDNEY UNIVERSITY, KINGSWOOD Thomson Adsett Architects 7 CHARLES STURT UNIVERSITY, PORT MACQUARIE Johnson Pilton Walker

8 NEW ROYAL ADELAIDE HOSPITAL Tract Consultants 9 AUSTRALAND COWPASTURE ROAD RETAINING WALL Retaining Solutions 10 GRATTAN GARDENS, PRAHRAN rush\wright associates 11 KEW II HOUSE Kennedy Nolan 12 NARELLAN TOWN CENTRE Place Design Group 13 GRAND CENTRAL SHOPPING CENTRE UPGRADE, TOOWOOMBA Place Design Group 14 GATEWAY SHOPPING PRECINCT, ALKIMOS AECOM 15 PARK AND PLAYGROUND AT 'LUNA' Arcadia Landscape Architecture

ENTRANTS



16



17



18



19



22



20



21



23

Kevin Borland Masonry Award

The Kevin Borland Masonry Award recognises projects that highlight the design potential of concrete masonry in commercial or residential built architecture.

Kevin Borland (1926–2000) was an innovative architect, a generous patron of younger architects, and an inspiring and much-loved design studio teacher.

After beginning his architectural studies at the University of Melbourne in 1944, Borland deferred to serve in the West Pacific in World War II. On returning, he completed his studies and graduated with a Bachelor of Architecture in 1950.

After working at Mockridge Stahle & Mitchell's office, Borland, together with friends Peter McIntyre and John and Phyllis Murphy, won the national competition to design the Melbourne swimming and diving stadium for the 1956 Summer Olympics.

Together with his former student and friend Daryl Jackson, Borland completed the design and construction of the distinguished brutalist Harold Holt Memorial Swimming Centre (1968–1969) in Melbourne's Glen Iris.

During a time when peer awards were far less common than they are today, Borland's designs received numerous awards from state chapters of the Royal Australian Institute of Architects. His work made a significant contribution to the trajectory of Melbourne architecture.

The Concrete Masonry Association of Australia (CMAA) is the peak body that represents the concrete masonry manufacturers of Australia. This includes bricks, blocks, pavers and retaining walls.



The CMAA supports the concrete masonry industry by providing technical information and advice to architects, engineers, specifiers and educators. The CMAA publishes technical manuals, data sheets and software packages relating to concrete block walling, concrete paving, permeable paving and concrete masonry retaining walls, which are free to download from the CMAA's website.

The Association also conducts workshop courses and provides a technical advisory service for masonry design queries.

16 KALBAR Casada Constructions 17 THE GALLERY Frasers Property 18 ST MARY'S NARTHEX Matt Gibson Architecture + Design 19 THE HERMITAGE Moir Landscape Architecture 20 SHERWOOD JOB Roslyn Murray Architects 21 RUTHVEN STREET STREETScape REDEVELOPMENT, TOOWOOMBA LAUD ink 22 LOWER BEECHMONT Junglescapes Landscaping Contractors 23 MALCOMSON ST RETAINING

WINNER

Perimeter House

MAKE ARCHITECTURE

Bound on all edges by a vibrant industrial context of brick factories, businesses and warehouses, this house is poised between two extremes, with the cool tranquillity of the shady poolside inner garden only a building skin away from the growl of the tough industrial streetscape.

With one side of this western edge threshold pushed hard against the street and the other side opening to a centrally located courtyard space, inbuilt pool and fireplace, this strip of building works between the public and the private, while offering places for engagement with the active street edge and places for children to peek out and play.

The house is a veritable festival of bricks, with new brick walls, recycled brick walls, brick planters, brick fireplaces, a brick swimming pool surround, brick perforated screens, brick textured surfaces- every brick use possible. Swooping planes, chunky masses, thick buttressing, paper thinness, lacy transparency, basket weave patterns: it's all here. But it's the bricks - the regular, the solid, the dependable bricks - that weld it all together powerfully into its visual oneness.

"With a heavy material on top, made to look light, this project transcends the nature of masonry to create an intriguing yet friendly house that interacts nicely with the street."

- 2017 Jury -

MANUFACTURER Adbri Masonry
MASONRY COLLECTION Architectural Masonry/
 Architectural Brick
BUILDER Basis Builders
CONTRACTOR Stonehenge Bricklaying



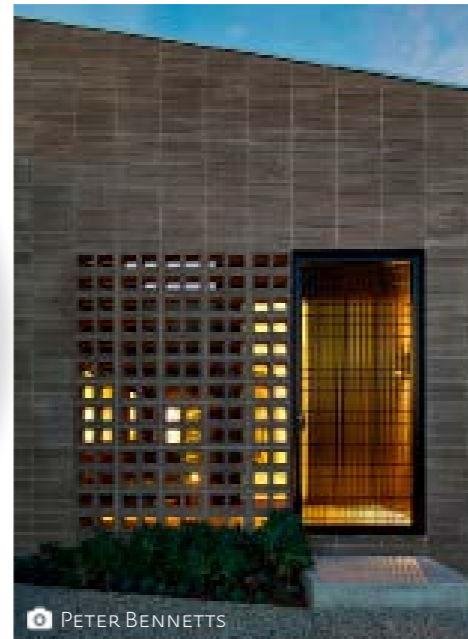
PETER BENNETTS

Rail House

CLARE COUSINS ARCHITECTS

"The crafted blockwork in this bunker-like home was executed with exceptional technique. The project demonstrates innovative responses to challenges relating to noise, privacy and the heritage context."

- 2017 Jury -



PETER BENNETTS



FINALIST

With one length of the site flanking a busy metropolitan railway, the robust Rail House project presented a number of unique challenges. Would it be possible to produce a habitable, comfortable family home in such close proximity to trains and a level crossing?

Rail House is a new build in a Heritage area. The material language of its urban location was drawn upon to create a contemporary civic yet mute face, which allowed maximum privacy for its inhabitants, who sought a reductive sanctuary.

A double-skin concrete block wall measuring 37 metres long and five metres high forms a fortified acoustic facade to the rail line, effectively minimising the significant noise pollution into faint ambient noise within.

The bunker-like concrete mass is broken up by a blockwork-and-steel screen, with a subtle detail distinguishing its entrance, allowing porosity into an otherwise windowless facade. Beyond this first threshold is a small open-air courtyard, a contemplative transitory space offering a valuable connection between bedrooms and a study to the outside elements.

Rail House succeeds in transforming a challenging site into a nuanced, purpose-built family oasis within densely urban surrounds.

MANUFACTURER Adbri Masonry
MASONRY COLLECTION Grey Block
BUILDER CBD Contracting
CONTRACTOR Bedrock Construction Group

FINALIST



LATITUDE GROUP

"Exemplary blockwork, expressive forms and the incorporation of Christian and Indigenous Australian symbolism have created a chapel that offers engaging spaces for liturgy and learning."

- 2017 Jury -

Mary's Chapel, St Joseph's College Geelong

BALDASSO CORTESE

St Joseph's College, Geelong provides Catholic education in the tradition of Edmund Rice. This project required a space for liturgy and learning that could accommodate 100 people. The client's desire was that the chapel not be religious in appearance nor "box-like," however, it was to incorporate both Christian symbolism and Indigenous symbolism of the local Wathaurong people.

Inspiration was taken from the symbolism of the Edmund Rice shield, which has strong synergy with the organic nature of Indigenous art, with flowing lines and sinuous movement representing gatherings (corroboree) and songlines (paths across the landscape). The chapel is broken into two forms that embrace one another: the lower/outer form directs people to the chapel and contains support spaces; while the taller form

contains the chapel. The stepping in the built form reduces the scale and bulk of the building from the streets.

The external core-filled concrete blockwork was chosen for its simplicity and robustness, enabling a lean and economical structural design and mitigating the need for structural steel with the exception of the roof. The overall materiality is restrained and minimal, ensuring a simple design.

MANUFACTURER Adbri Masonry
MASONRY COLLECTION Architectural Masonry/Designer Masonry Shotblast
BUILDER A.S. Gleeson Construction
CONTRACTOR Caruso Bricklaying

FINALIST

Inverdon House

CHLOE NAUGHTON

A house for a soon-to-be-retired couple, Inverdon House certainly challenges the norm in the small regional town where it is located. This is largely for its use of hard-wearing, low-maintenance masonry. Typically hidden in paint, plasterboard and render, here the material has instead been left exposed, revealing the structure in such a way that allows the craftsmanship to be on show. This requires it to be made with care, pride and a certain level of expertise. In this process a new skill is passed on to younger tradespeople; and if the demand for quality is there, this skill set will continue.

The current local housing model mostly ignores passive design principles, closing down to the elements rather than working with the climate. At Inverdon House, only the two bedrooms are

airconditioned for especially humid nights. The carport features a breezeblock screen that provides a pragmatic solution to the impact of the harsh western sun, allowing filtered light and ventilation through to the outdoor area beyond. The two main blade walls, which anchor the house in its setting, run from outside to inside, to outside again, assisting in the blurring of boundaries between interior and exterior, vital for tropical living.

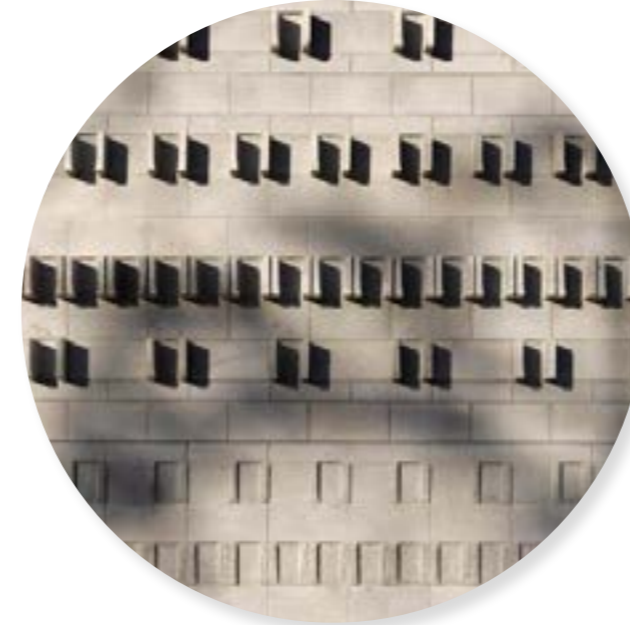
MANUFACTURER Austral Masonry
MASONRY COLLECTION GB Smooth/Smooth Porcelain
BUILDER J.D. Lowcock and Co
CONTRACTOR Jack Lowcock and Tim Johnstone

"The masonry work has been left exposed in this project, championing the material and providing a robust and welcoming interior that would be a pleasure to call home."

- 2017 Jury -



BENJAMIN HOSKING



CHRISTOPHER FREDERICK JONES

FINALIST

Anna Meares Velodrome

COX ARCHITECTURE

"This project is imaginative, textured and well crafted. Expert use of concrete blockwork has enabled a sophisticated response to the brief and the delivery of a complex series of spaces."

- 2017 Jury -

Inspired by the dynamics of cycling, the Anna Meares Velodrome is resolved as a sweeping, undulating roof responding to the complex geometry of the track and seating bowl configuration.

The built form revolved around the ambition to elegantly and efficiently span the steel roof structure and translucent membrane over the handmade timber track. A less obvious but critical element was the complex series of functional spaces supporting the building operations. These are all resolved in concrete block as a hard-wearing, low-maintenance solution.

The expressive capacity of blockwork was explored and is a key feature of the building. As the ground falls away across the site, a five-metre wall is exposed to the perimeter ring road. This wall was

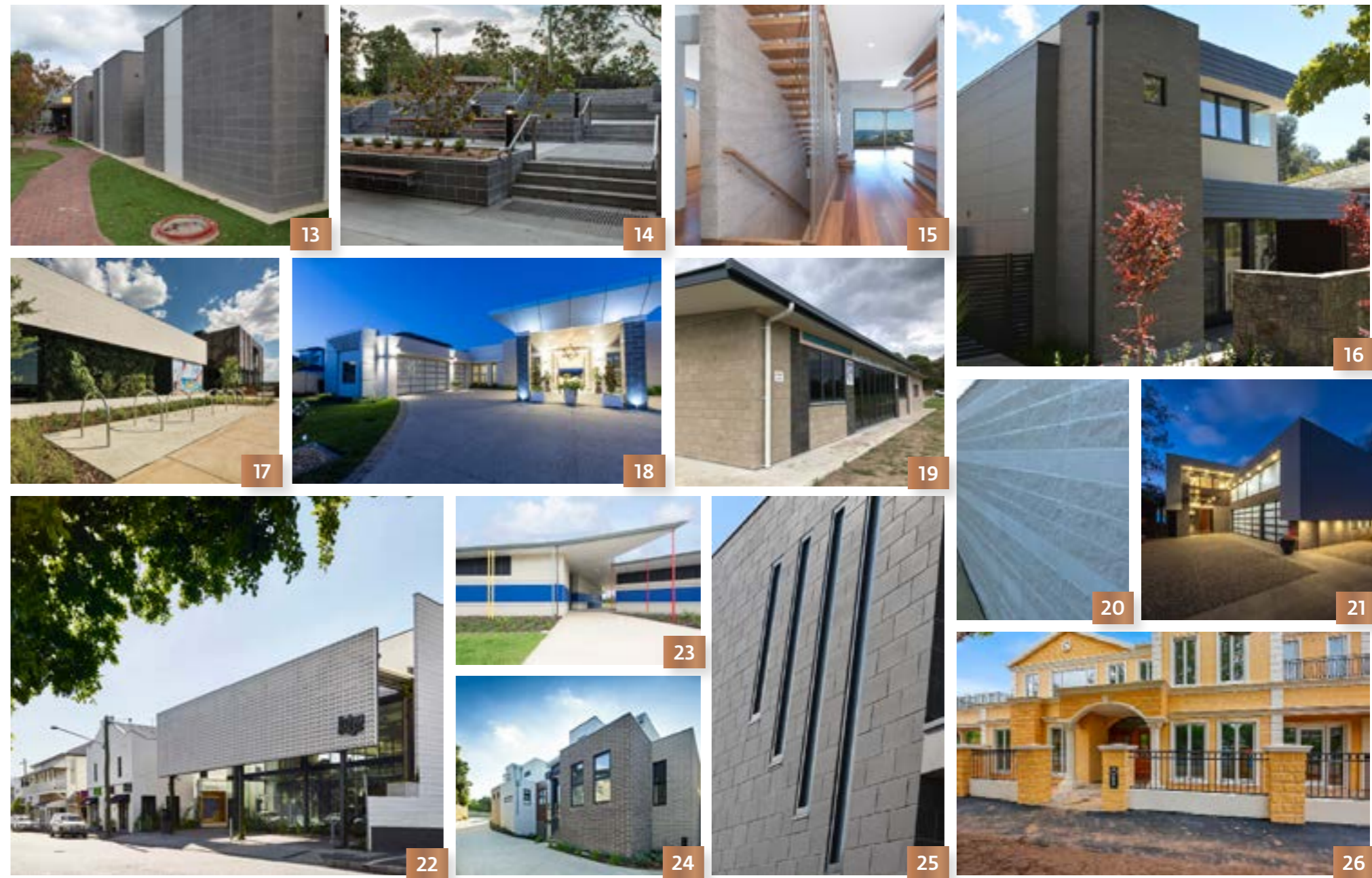
an opportunity for a crafted response equivalent to the roof and the track. Using the analogy of cogs on a geared wheel, the architect worked with the block supplier, contractor and subcontractor to produce a relief wall, using standard series blocks cut to expose two parallel webs. These were rotated in the wall for a varied pattern that captures the early-morning and late-afternoon light, converting the pragmatic into the poetic.

MANUFACTURER Austral Masonry
MASONRY COLLECTION Grey Block/Smooth Grey
BUILDER Watpac
CONTRACTOR FTF Bricklaying

ENTRANTS



1 ROCHEDALE METRICON 2 NATIONAL STORAGE CARRARA Steel Storage 3 J. PATRICK AND M. BRIDGER RESIDENCE Fineline Design & Drafting 4 HARVEY TAYLOR HOUSE Philip Leeson Architects 5 WAVERLEY CHRISTIAN COLLEGE 6 ALTERATIONS AND ADDITIONS TO 1940S SEMI IN CHATSWOOD Creative Spaces Architects and Project Managers 7 EARLY LEARNING CENTRE AND LIBRARY TALLANGATTA JWP Partnership 8 PHC MEDICAL CENTRE CORRIMAL Shellshear Young 9 MT MARTHA HOUSE Edition Office 10 LIGHTHOUSE ROOM 11 11 ASHLAR SJB 12 BRICK HOUSE Andrew Burges Architects



13 BENALLA BASE HOSPITAL Clarke Hopkins Clarke 14 SHREC Budden, Nangle, Michael, Hudson Architects 15 B. JOHNSON AND S. BRIGDON RESIDENCE Nadine K Drafting and Design 16 MAXWELL ST YARRALUMLA Adam Hobill Design 17 CLUB ARMSTRONG Hyball 18 SANCTUARY COVE TJV Design 19 PACIFIC PINES FOOTBALL CLUB Debian Homes 20 ROYAL NEWCASTLE HOSPITAL SITE dwp 21 GUILFOYLE STREET, YARRALUMLA DNA Architects 22 LIVING EDGE SHOWROOM & COMMERCIAL OFFICE Richards and Spence 23 SOUTH PINE SPORTS COMPLEX AECOM 24 MAGDALA TOWNHOUSES PL Building Design 25 TOWNHOUSES MIDDLE PARK Aldo Ventieri Architect 26 WERE ST BRIGHTON Victorian Drafting & Design

ENTRANTS



27



28



29



30



31



32



33



34



35



36



37



38



39

27 HOUSE TO CATCH THE SUN MAKE architecture 28 DAWS ROAD DONCASTER EAST Bruce Henderson Architects 29 ELWOOD HOUSE Preston Lane 30 THE BOULEVARD ABERFELDIE Archsign 31 AMENITIES BLOCK AT OAKVALE FARM AND FAUNA World Oakvale Farm & Fauna 32 ST LUCIA HOUSE Shane Thompson Architects 33 RESIDENTIAL BUCKRA BENDINNI G.J. Gardner Homes Coffs Harbour 34 CURRARONG HEMP HOUSE Dom Hage Designs 35 MT MARTHA HOUSE Bird de la Coeur Architects 36 BARWON HEADS HOUSE NMBW Architecture Studio 37 BETTERPET VETS- VETERINARY CLINIC Betterpet Vets 38 RIVERSTONE POLICE STATION Gardner Wetherill & Associates 39 JUBILEE PLACE Liefting Merlo Homes

Robin Dods Roof Tile Excellence Award

Since the introduction of the Roof Tile Excellence category into the awards in 2014, the response has been greatly positive. Many worthy past winners have pushed the envelope in innovative roof design using terracotta and concrete roof tiles in their residential or commercial building projects.

To further showcase the sustainability benefits, versatility and design possibilities of terracotta roof tiles, a new award category was introduced in 2016, named after renowned architect Robin S. Dods (1868-1920). Robin Dods believed in sustainable design to suit the climate, especially in roofing. His distinctive style of gabled roofs for domestic dwellings, which combined passive solar design while allowing for ventilation and insulation, became prevalent throughout Queensland in the early 1900s.

The Roofing Tile Association of Australia (RTAA) is the roof tile industry's peak organisation, representing the concerns and interests of members across the country, with a particular focus on training (including apprenticeships) and occupational health and safety issues.

Collectively the RTAA membership is responsible for nearly all the installation of roofing tiles in Australia.



WINNER

Kempsey Crescent Head Surf Life Saving Club

NEESON MURCUTT ARCHITECTS

Crescent Head is a small beachside town 400 kilometres north of Sydney. It is an iconic surfing and fishing reserve. The new surf club replaces an existing building that was seriously dilapidated. Maintaining the existing perpetual Crown lease, the new building sits wholly within the footprint of the old.

The building is designed "in the round," with a pitched roof and cut-away walls that produce a unique appearance on each side, reinforced by colour. The roof generates volume to encompass a function space upstairs.

Materials selection was critical due to the surfside location - durable brick and tile were used. A beachy, sparkly skin in soft pipi-shell pastels wraps the building form. This is achieved using polychromatic glazed bricks. Specified percentages of white,

vanilla, stein grey, wheat and aqua create tonal blends that vary across the facades according to orientation.

Four large openings address aspects of the remarkable location: beachfront, headland, township and creek. Openings elsewhere are treated as part of the building skin and set behind brick screens.

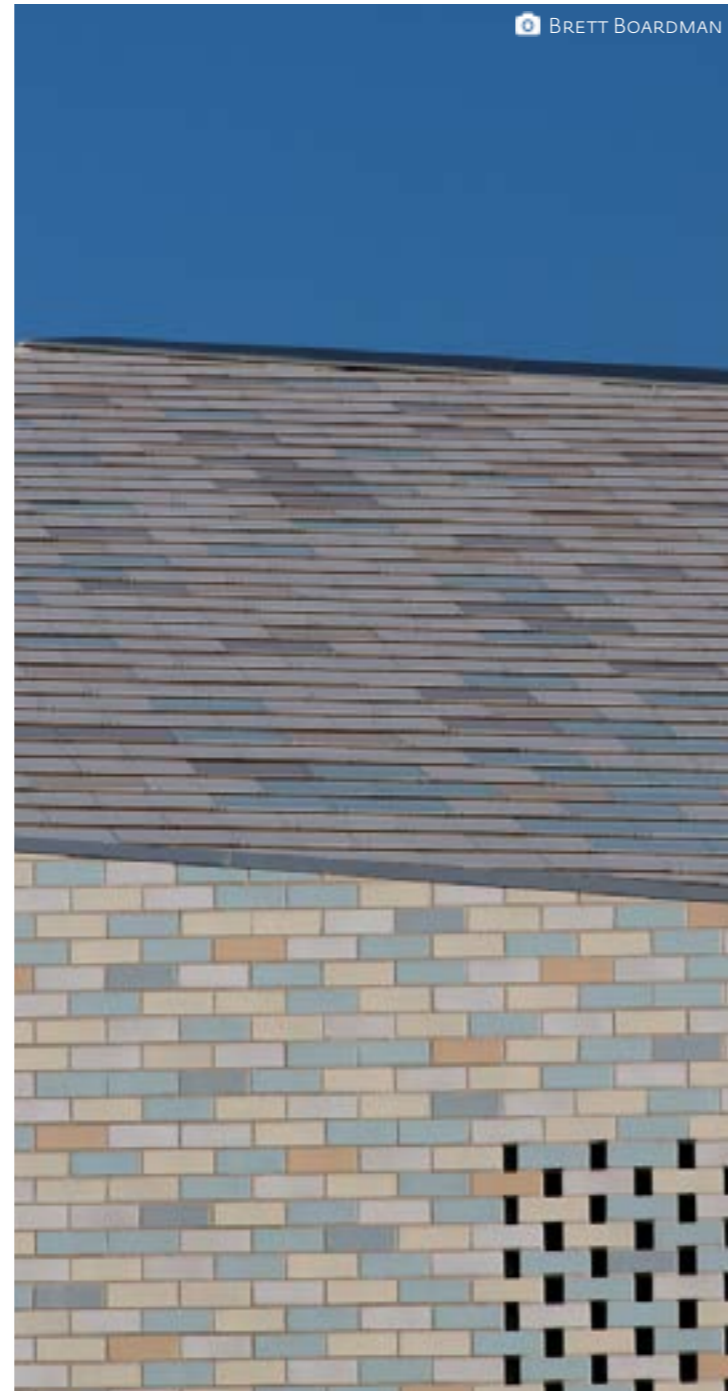
The roof is in membraned ply, over-clad with glazed ceramic tiles on a Nulok fixing system. The tiles are colour-matched to the bricks to create a unified building.

"The designers approached the concept of the roof in a new, invigorating way, using tiles in a complex colour palette to provide a durable solution that reference the beachside setting."

- 2017 Jury -

PRODUCTS USED Classic Ceramics- Ceramica Vogue
BUILDER & CONTRACTOR O'Donnell and Hanlon

BRETT BOARDMAN

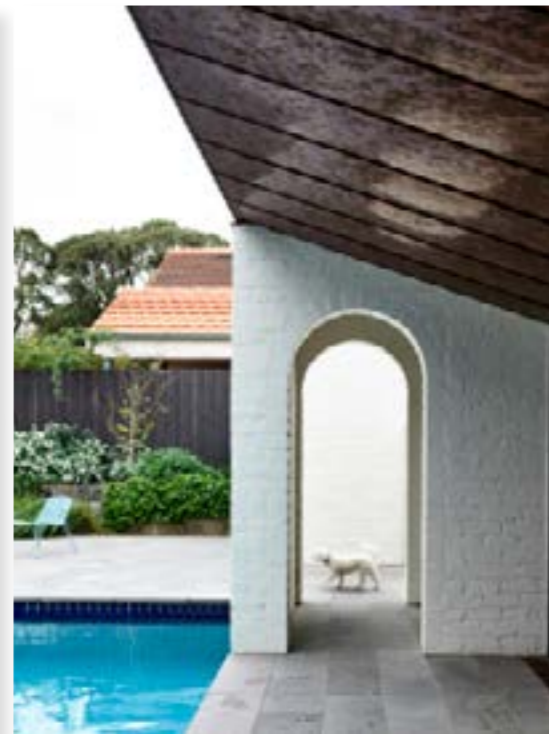


Deepdene House

KENNEDY NOLAN

"This is an exemplary project full of expressive forms, intense colours and textures, with a pyramid roof of terracotta shingles that unites the living spaces and gives back to the street."

- 2017 Jury -



FINALIST

In finding a workable model for this house, the Arts and Crafts movement and its proto-modernist philosophies were explored, as a way to satisfy the requirements of the brief and the designer's compulsion to modernity. Many of the architectural interests evident in this project align with the ideas and aesthetics of the Arts and Crafts movement: expressive function, picturesque planning and the exposition of the crafts of building.

The conceptual basis of the house is strongly evident in the fabric of the building. Substantial, textural, durable, low-maintenance materials and surfaces - all were selected for their ability to age in place, to ensure that the house improves

with age, that it celebrates patina, and that the materials reach their aesthetic potential through wear and time.

There is also whimsy, joy and beauty in this house. The formally expressive chimneys with their handmade pots, the fragrant cedar-lined pyramid of the main living area, the heft and shadow of the brick-and-concrete rear pavilion, the intense colour and texture of the interior surfaces - all contribute to a house that is so much more than the sum of its parts.

PRODUCTS USED Terracotta Red
BUILDER & CONTRACTOR Buildingmakers

FINALIST

"The designers have created a bold, steeply pitched front facade that highlights the brilliance of terracotta shingles while gently complementing the stone cladding of the dwelling."

- 2017 Jury -



Blackburn

SOLAR SOLUTIONS DESIGN

This two-storey, energy-efficient home sits comfortably in its natural treed surroundings while making a design statement. The steep, front tiled facade, which has a pitch of 74 degrees, has been clad in Boral Terracotta Shingle, in the colour 'Eclipse.'

MANUFACTURER Boral Roofing
PRODUCTS USED Shingle/Eclipse
BUILDER Sier Constructions
CONTRACTOR Buildcor

FINALIST

Mountain Hideaway

FRANK KOSZTELNIK AND ASSOCIATES

This two-storey home is tucked away in the peaceful town of Wentworth Falls in the Blue Mountains, NSW. It is grand in size and elegant in design.

The house has been cleverly designed to ensure that it maintains the typical "mountain hideaway" characteristics of warmth, comfort and cottage charm. The look and feel is one of classic French Federation architecture, and the use of rich colouring in the brickwork and roof tiles further intensifies the traditional French appeal.

The large expanse of roof stands out stylishly without being overpowering and the great turret, which crowns the grand octagonal room, sits tall and proud. The flat Terracotta Shingles on the turret help achieve a balance between traditional and contemporary design. The finials are the perfect way to finish off the cosy hideaway with grand, French-style elegance.

MANUFACTURER Boral Roofing
PRODUCTS USED French Sydney Red, Shingle Sydney Red
BUILDER Frazer Building Services
CONTRACTOR PM Roofing

"Skilful design and clever material selection have resulted in a roof with rich colouring and dramatic forms – a fitting top to a balanced mountain hideaway."

- 2017 Jury -



FINALIST

Lana's Forever Home

THREE BIRDS RENOVATIONS

"Concrete tiles have been used intelligently to create a roof design that is timeless and elegantly complementary to the "forever home's" Mediterranean-style aesthetic."

- 2017 Jury -

MANUFACTURER Monier Roofing
ROOF TILE COLLECTION Elabana/Salt Spray
BUILDER Accord Construction Group
CONTRACTOR MacArthur Roofing

This project – a Mediterranean-style oasis in Sydney's northern suburbs – is the "forever" home of Lana Taylor, who is one-third of the Three Birds Renovations team.

The home's predominantly white-on-white aesthetic meant that the roof also needed to be white or very light. The design needed to be addressed deftly to avoid the roof becoming "a mere shadow of itself."

In conjunction with Monier, Taylor chose Elabana concrete roof tiles in the new colour 'Salt Spray.' Considered material selection and deft design have resulted in a sophisticated roof – an element that is one of Taylor's favourite aspects of the whole house.

ENTRANTS



1 MONET 55 Carter Grange 2 THE ESPLANADE PRIVATE RESIDENCE Echelon Group 3 MODERN MALVERN Paul Delany Architects 4 GLENVILL PROJECT IN NORTH CAULFIELD Glenvill Internal Design 5 RYDE Russell Scott Design 6 MONTPELLIER 51 Carlisle Homes 7 CLELAND ST MT CLAREMONT Distinctive Homes 8 ELABARA 9 RAVID PROJECT IN NORTH CAULFIELD Ravid Internal Design 10 PLENTY HOMESTEAD Levan Design 11 THE KENTHURST Felton Constructions 12 RE-ROOFING OF ROYAL NORTH SHORE HOSPITAL 13 EMU PLAINS Distinctive Innovations 14 AMAROO AGED CARE FACILITY 'WANDOO' Gary Batt & Associates Architects 15 FADI RESIDENCE Creative Spaces Architects and Project Managers 16 BOSTON MANOR 17 SANAA 18 THE KINGSCOTT Binet Homes 19 TERRACOTTA RE ROOF BURNT OCHRE GRANDE Angus Cowan Constructions



20 RAYNE 21 HERBERT PROPERTY Adenbrook Homes 22 MARRIOT GRANGE Porter Davis 23 MATER HOSPITAL BRISBANE RE-ROOF 24 SONNYMEADE PLACE RP Constructions 25 LOCH AVENUE Carter Grange 26 GREEN TREE DESIGNS 27 LONGHURST RESIDENCE Hopwood homes 28 FLOREAT HOME Milankov Designs and Project Management 29 HAWTHORN PAVILLIONS Zeno Entity 30 WILSTON BUNGALOW Push 31 BROOKWATER B Porter Davis 32 KEW ANGLES Paul Delany Architects 33 SAN FERNANDO Blaine Watson 34 AEGIS BALMORAL AGED CARE FACILITY Montague Grant Architects 35 NORAH HEAD LIGHTHOUSE

HORBURY HUNT COMMERCIAL AWARD ENTRANTS INDEX

- 1 DOURO **Motus Architecture**
C: BGC Construction
M: Recycled Brick
- 2 ST JOSEPHS MEWS **AGED CARE** **Edgard Pirrotta Architects**
C: Northern Bricklaying
M: Austral Bricks
P: Nubrik Series, Chapel Red
- 3 ORANA **OVERTURE HALL** **Paul Barnett Design Group**
C: Euphoria Nominees
M: Bowral Bricks
P: Bowral Blue and Capitol Red
- 4 AUSTRALIAN CATHOLIC UNIVERSITY **ST. BRIGID'S HEALTH SCIENCES BUILDING** **Woods Bagot**
C: NEWMAC Bricklaying
M: Austral Bricks
P: Burlisque, Pacific
- 5 ST MARY'S NARTHEX **Matt Gibson Architecture + Design**
C: Ducon Maintenance
M: Austral Bricks
P: Elements, Zinc
- 6 ASPECT WINDSOR **Davey Architecture Studio**
C: Stuart Dent
M: Austral Bricks
P: Classic 230, Chapel Red
- 7 WELLINGTON ON THE PARK, WATERLOO **Fox Johnston**
C: Ramos Bricklaying
M: Bowral Bricks
P: Simmental Silver
- 8 REGIS EAST MALVERN **Smith+Tracey Architects**
C: Dampier Bricklaying
M: Bowral Bricks
P: Brahman Granite, Simmental Silver
- 9 ASPLEY VET **Vokes and Peters**
C: Steve Luke
M: PGH Bricks & Pavers
P: Urban Living, Copper Glow
- 10 DORRIEN **APARTMENTS** **Giorgi Group**
C: White Sands Bricklaying
M: Austral Bricks
P: Indulgance, Muscatel
- 11 MONASH UNIVERSITY **HARGRAVE-ANDREW LIBRARY** **BKK Architects**
C: McGaw Constructions
M: Daniel Robertson
P: Hawthorn 50, Black
- 12 LAWRENCE STREET PEAKHURST **APARTMENTS** **DKO Architecture**
C: TP Projects
M: PGH Bricks & Pavers
P: Espresso, Alfresco
- 13 BELLFIELD **MEDICAL CENTRE** **Doepel Marsh Architects**
C: Cooper Group Australia
M: Austral Bricks
P: Elements, Zinc
- 14 TRINITY COLLEGE **UNIVERSITY OF MELBOURNE SOUTHERN PRECINCT** **McIldowie Partners**
C: Build It Brick
M: Austral Robertson
P: Hawthorn, London Blend
- 15 ARENA CHILD AND FAMILY CENTRE **Dale Cohen Architects**
C: M & K Davis Bricklaying
M: Glazed Bricks
- 16 BURC COLLEGE **Anton Johnson Architect**
C: Bricklaying Solutions
M: PGH Bricks & Pavers
P: Rhapsody, Vibrant
- 17 HOLY SPIRIT SEMINARY, HARRIS PARK, NEW SOUTH WALES **dwp**
C: Brick It Masonry
M: PGH Bricks & Pavers
P: Blue Steel Flash, Metallic
- 18 CHAPMAN GREEN **PBD Architects**
C: Authentic Bricklaying
M: Bowral Bricks
P: Bowral Brown
- 19 EASTWOOD **PRIMARY SCHOOL** **Crosier Scott Architects**
C: Port to Bay Brick and Block
M: Austral Bricks
P: Burlisque, Luscious Red
- 20 AZURE **Vil Brickman Architects**
C: Tony Barker
M: Austral Bricks
P: Metallix, Titanium
- 21 ST ANDREW'S COLLEGE **LEARNING HUB** **Wilson Architects**
C: Badge Constructions
M: PGH Bricks & Pavers
P: Crevole-Velour
- 22 DISCOVERY CHILD CARE CENTRE **Craig Teasdell Architect**
C: Morr Constructions
M: Austral Bricks
P: Burlisque, Smashing Blue
- 23 HONEYSUCKLE DRIVE **dwp**
C: Pinnacle Bricklaying
M: Bowral Bricks
P: Bowral Blue
- 24 THE CENTENARY LIBRARY "CHURCHIE" **Brand and Slater Architects**
C: Geoff Michel-Bricklayer
M: Bowral Bricks
P: Gertrudis Brown
- 25 KING'S COLLEGE **WENSLEY WING** **Wilson Architects**
C: FTF Bricklaying
M: Boral Bricks
P: Escura Velour, Red
- 26 ROCKINGHAM HEALTH TRAINING CENTRE **iredale pedersen hook architects**
C: DF Martin Bricklaying
M: Austral Bricks
P: Western Earth, Argyle
- 27 **FOODBANK GERALDTON** **Eastman Poletti Sherwood**
C: Geraldton Building Services and Cabinets
M: Geraldton Brick
P: Face Block, Bringo
- 28 ROSE STREET MIXED USE DEVELOPMENT **ESSENDON** **C. Kairouz Architects**
C: Samsos Projects
M: Austral Bricks
P: La Paloma, Gaudi
- 29 ELECTRA HOUSE **Studio Nine Architects**
C: Schiavello
M: PGH Bricks & Pavers
P: Adelaide Red Smooth
- 30 BYFORD SECONDARY COLLEGE, STAGE 2 **Donaldson + Warn**
C: First Choice Bricklaying
M: Brikmakers
P: CustomBrik Range
- 31 ROSE STREET RICHMOND **Jackson Clements Burrows Architects**
C: Project Group
M: Austral Bricks
P: Industrial, Steel
- 32 HAY PARK SPORTS PAVILION **Kent Lyon Architect**
C: Civilcon (WA)
M: Austral Bricks
P: Elements, Graphite
- 33 CHARLES STURT UNIVERSITY PORT **MACQUARIE CAMPUS BVN**
C: Watpac
M: Bowral Bricks
P: Bowral 50, Capitol Red, Adbri pavers
- 34 HOLY FAMILY CHURCH **De Angelis Taylor & Associates**
C: Waratah Builders
M: PGH Bricks & Pavers
P: Sandstock
- 35 DEMPSEY BUILDING **Paul Barnett Design Group**
C: CTR Pacific
M: PGH Bricks & Pavers
P: Rustic Harvest Cream, Smooth
- 36 GLEBE HILL FAMILY PRACTICE **Cykel architecture**
C: All Brick Tasmania
M: Austral Bricks
P: Metallix, Graphite
- 37 WESTERN DISTRICTS RUGBY FOOTBALL CLUB **Richards and Spence**
C: Brien bricklaying + Lafab bricklaying
M: PGH Bricks & Pavers
P: Black and Tan, Smooth
- 38 WILLETTON SENIOR HIGH SCHOOL **REDEVELOPMENT STAGE 2** **Hassell**
C: Tyrone Group
M: Austral Bricks
P: Indulgance, Amaretto
- 39 NEWTOWN DEVELOPMENT **Nick Bell Architects**
C: Andary Property Investments
M: Bowral Bricks
P: Bowral Blue
- 40 BELMONT ST, SUTHERLAND **Gledhill Constructions**
M: Bowral Bricks
P: Bowral Blue
- 41 RIVERLAND ORAL HEALTH CENTRE **Grieve Gillett Andersen**
C: Caruso Constructions
M: Austral Bricks
P: Metallix, Gun Metal Blue
- 42 UNIVERSITY OF NEW ENGLAND, ARMIDALE **Francis-Jones Morehen Thorp**
C: Masonry Constructions
M: Bowral Bricks
P: Bowral Brown
- 43 KEMPSEY CRESCENT HEAD SURF LIFE SAVING CLUB **Neeson Murcutt Architects**
C: O'Donnell and Hanlon
M: Glazed Bricks
- 44 PENINSULA PRIVATE HOSPITAL **REDEVELOPMENT-STAGE 1** **Billard Liece Partnership**
C: TJ Constructions
M: Austral Bricks
P: Access, Ash
- 20 POND HOUSE "MARRANDILLAS" **Nic Owen Architects**
C: Melpro Building
M: Recycled Brick
- 21 ELGIN STREET RESIDENCE **Sonelo Design Studio**
C: TCM Building Group
M: Krause Bricks
P: Emperor/Grapian Blue Bricks
- 22 MINDALONG A Workshop **C: Hayden Hartley with Shane Braddock (Foreman)**
M: Austral Bricks
P: Elements, Graphite
- 23 SUNNYSIDE **Paragird Architecture**
C: A & S Candi (Building)
M: Boral Bricks
P: Aspire, Boulder
- 24 SOUTH MELBOURNE BEACH HOUSE **Topology Studio**
C: Low Building
M: Recycled Brick
- 25 DOLCE LANE **Klopper & Davis Architects**
C: Mark Busio
M: Geraldton Brick
P: Contemporary Face, Governor Stirling
- 26 MAYFAIR STREET RESIDENCE **Klopper and Davis Architects**
C: Wenham Constructions
M: Geraldton Brick
P: Contemporary Face, Governor Stirling
- 27 TOODYAY SHACK A Workshop **C: Hayden Hartley with Shane Braddock (Foreverman)**
M: Austral Bricks
P: Elements, Graphite
- 32 FIFTY FIFTY **Architecture Architecture**
C: CTM Construction
M: Recycled Brick
- 29 HOUSE ON SUMMERS **MHPA Studio Architecture**
C: VM Building
M: Austral Bricks
P: Elements, Zinc
- 30 WILSTON BUNGALOW PUSH **C: Cramb Brothers**
M: Recycled Brick
- 31 FORD STREET HOUSE **Chauk Studio**
C: Harmac Constructions (Marc Harrison)
P: Krause Bricks, Hawthorn Black Bricks
- 32 CASA REGGI **Parvenu Architectural**
C: Adrian Reggi
Interior Designer: Touches Interior Design & Decor
M: PGH Bricks & Pavers
P: Black and Tan, Smooth
- 33 TORRENS HOUSE **LS Design Construct**
M: PGH Bricks & Pavers
P: Sierra, Altitude
- 34 HOUSE FOR A PLUMBER **Pleysier Perkins**
C: One Off Constructions
P: Petersen Bricks
- 35 DANIEL JORDAN HOMES **Daniel Jordan Homes**
M: PGH Bricks & Pavers
P: Apollo, Altitude
- 36 WAIRANGI HOUSE **Bijl Architecture**
C: Ingleside
M: Bowral Bricks
P: Shorthorn Mix
- 37 DEEPDENE HOUSE **Kennedy Nolan**
C: Buildingmakers
P: Glazed Bricks
- 38 PEAK HOUSE **HIGHFIELDS EPS Design**
C: Jonny Wells
M: Daniel Robertson
P: Hawthorn50, Black
- 39 CAMPBELL RESIDENCE **Steele Campbell Building**
M: Geraldton Brick
P: Wet Tumbled, Custom Blend
- 40 VOGUE HOMES **DISPLAY ORAN PARK Vogue Homes**
M: Austral Bricks
P: Designa Basalt, Chisel Stone
- 41 THE FOLKHOUSE **Shaun Lockyer Architects**
M: PGH Bricks & Pavers
P: Copper Glow, Smooth
- 42 ROSE HOUSE **Baracco + Wright Architects**
C: ATMA Builders
M: PGH Bricks & Pavers
P: Megalong Valley Grey, Dry Pressed
- 43 INDIGO SLAM **Smart Design Studio**
C: Pacific Tiles, Zac Hakkoum
M: Bowral Bricks
P: Simmental Silver
- 44 LEEDERVILLE VILLA A Workshop **C: Hayden Hartley**
M: Austral Bricks
P: Elements, Zinc
- 45 KILLARA **Archestral Designs**
C: KLF Bricklaying
M: Daniel Robertson
P: Hawthorn50, Red
- 46 MANLY HOUSE **Trebilcock & Associates Architects**
C: Steve Luke-Bricklayer
M: Brikmakers
P: Lloyd Wright Brick Collection, Boston Grey
- 47 STREAMLINE **MODERN HOUSE Folk Architects**
C: Project Group
M: Austral Bricks
P: La Paloma, Miro
- 48 SKS DEVELOPMENTS **C: Sidney Charalambous**
M: Austral Bricks
P: Industrial, Iron
- 49 TRUSS HOUSE **Carter Williamson Architects**
C: Andrew Burton Constructions
M: Recycled Bricks
- 50 THE SUNTRAP **Anderson Architecture**
C: Maison Builders
M: Recycled Brick
- 51 GREY STREET HOUSE **Local Architecture**
C: Ryan Archibald (Arch Brick Masonry)
M: Midland Brick
P: Midland Reds, Heritage Red
- 52 NOOSA HOUSE **Stevens Lawson Architects**
C: Jason Warren
M: Austral Bricks
P: La Paloma, Gaudi
- 53 THE ASTON **Perceptions**
C: East2west Brick and Blocklaying
M: Brikmakers
P: Lloyd Wright Brick Collection, New Orleans Vintage Tumbled
- 54 BRIGHTON HOUSE **Jost Architects**
C: Philip Building Group
M: Austral Bricks
P: Burlisque, Charming Black
- 55 KILLARA **Junctions**
C: Simon Bricklayer
M: Recycled Brick
- 56 ANNANDALE HOUSE **Welsh + Major**
M: PGH Bricks & Pavers
P: Timeless Standstocks, Seaforth
- 57 GIBBON ST STUDIO **Channon Architects**
C: Elvis and Rose
P: Claypave-Delgado 300 Brick in Tan
- 58 FAIRWATER **Austral Bricks**
C: Frasers Property
M: Austral Bricks
P: La Paloma, Gaudi
- 59 CABARITA Rd, **CABARITA CK Design**
M: Austral Bricks
P: La Paloma, Gaudi
- 60 CRASE STREET **Channon Architects**
C: Elvis and Rose
M: Bowral Bricks
P: Designa Basalt, Chisel Stone
- 61 MULCONDA **HOMESTEAD hrmpdrtd architecture**
C: Ray Linter
M: Bowral Bricks
P: Bowral Blue
- 62 BRICK HOUSE **Andrew Burges Architects**
C: Shane Green Building
P: Petersen Tegl
Kolumba K11 Bricks

C: CONTRACTOR M: MANUFACTURER P: PRODUCT

HORBURY HUNT RESIDENTIAL AWARD ENTRANTS INDEX (CONTINUED)

C: CONTRACTOR M: MANUFACTURER P: PRODUCT

HORBURY HUNT RESIDENTIAL AWARD ENTRANTS INDEX

C: CONTRACTOR M: MANUFACTURER P: PRODUCT

- 1 YORKSHIRE STREET **Planning & Design**
C: Ralph Merhi
M: Austral Bricks
P: Industrial, Char
- 2 BETTER BUILT HOMES DISPLAY **Better Built Homes**
M: Austral Bricks
P: Expressions, Blackstone
- 3 MCCREDIE RESIDENCE **Freadman White Architects**
C: R and K Services
M: Austral Bricks
P: Industrial, Steel
- 4 HOUSE ON CHELMSFORD **KTR Creations**
C: Element Construction WA
M: Austral Bricks
P: Pioneer, Guildford
- 5 MAITLAND HOUSE **Kennedy Nolan**
C: Madok Homes
M: Recycled Brick
- 6 NEUMANNHAUS **ITN Architects**
C: Anderson Homes
M: Austral Bricks
P: La Paloma, Miro
- 7 BALLANTRAE, ST KILDA WEST **Metroworks Architects**
C: Neumode Design & Construction
M: Recycled Brick
- 8 LINDFIELD HOUSE **Tribe Studio Architects**
C: JLS Construction
M: Austral Bricks
P: Commons, Dry Press
- 9 BALLANTYNE **Foemann**
C: ProvanBuilt
M: Recycled Brick
- 10 D+K HOUSE **buck & simple architects**
C: DC Shield Constructions
M: PGH Bricks & Pavers
P: Crevole (Velour), Velour
- 11 WATERLOO HOUSE **Anthony Gill Architects**
M: Recycled Brick
- 12 GARDEN HOUSE **Still Space Architecture**
C: No Worries Bricklaying
M: Austral Bricks
P: Camilla, Azure
- 13 HAWTHORN HOUSE **Robert Simeoni Architects**
C: Gande Constructions
M: Bowral Bricks
P: Bowral Blue
- 14 CAWSTON **Mountford Architects**
C: Mosman Bay Construction
M: Bowral Bricks
P: Bowral Blue
- 15 PRIVY HOUSE **ITN Architects**
C: J A & K N Jones Builders
M: Recycled Brick
- 16 DARK HORSE **Architecture Architecture**
C: Sinjen
M: Austral Bricks
P: La Paloma
- 17 BANK STREET **Padarc**
C: The Domicile Group
M: Glazed Clay Bricks
- 18 RUFFEY LAKE HOUSE **Inbetween Architecture**
C: DJW Constructions
M: Recycled Brick
- 19 THE DIAMOND PROJECT **Michelle Walker Architects**
C: Jetcharm Constructions
M: Bowral Bricks
P: Bowral Blue
- 1 FUKASHIMA REBUILD **NTC Consultants**
C: Construction
M: Geraldton Brick
P: Paving, Coral
- 2 PHARLAP PARADE, BALDIVIS SQUARE **Folium Landscape Architecture**
C: Agim Mustafa
M: Brikmakers
P: Stonewash Paving Collection, Charcoal
- 3 RIVERSIDE DRIVE **Green Synthesis Design**
C: Magnus Landscapes & Nursery
M: National Masonry
P: Landscape Range, Modernstone-Charcoal
- 4 MASCOT CENTRAL **Arcadia Landscape Architecture**
C: Sam the Paving Man
M: Adbri Masonry
P: Paving, Euro Stone
- 5 WULABA PARK **Sturt Noble Associates**
M: Adbri Masonry
P: Paving, Trihex
- 6 WESTERN SYDNEY UNIVERSITY, KINGSWOOD **Thomson Adsett Architects**
C: Mansour Paving
M: Austral Masonry
P: Techpave, Terracotta
- 7 CHARLES STURT UNIVERSITY, PORT MACQUARIE **Johnson Pilton Walker**
C: Bonny Hills Garden Centre
M: Adbri Masonry
P: Paving, Brickpave
- 8 NEW ROYAL **ADELAIDE HOSPITAL Tract Consultants**
C: Trewstone
M: Adbri Masonry
P: Retaining Wall, Versastone
- 9 AUSTRALAND **COWPASTURE ROAD** **Retaining Solutions**
M: Austral Masonry
P: Keystone, Charcoal
- 10 GRATTAN GARDENS, PRAHRAN **rush wright associates**
C: Planned Constructions
P: Glazed Bricks
- 11 KEW II HOUSE **Kennedy Nolan**
C: Overend Constructions
M: Daniel Robertson
P: Hawthorn50, Dulwich Grey
- 12 NARELLAN TOWN CENTRE **Place Design Group**
C: Landscape Solutions
M: Adbri Masonry
P: Paving, Euro Stone
- 13 GRAND CENTRAL SHOPPING CENTRE **UPGRADE, TOOWOOMBA** **Place Design Group**
C: Dig-it Landscapes
M: Adbri Masonry
P: Paving, Euro Honed
- 14 GATEWAY SHOPPING **PRECINCT, ALKIMOS** **AECOM**
C: Lightning Brick Pavers
M: Brikmakers
P: Granite Paving Collection, Sea Mist
- 15 PARK AND PLAYGROUND AT 'LUNA' **Arcadia Landscape Architecture**
C: V&V Landscaping
M: Bowral Bricks
P: Gettrudis Brown
- 16 KALBAR **Casada Constructions**
C: J&L Bricklaying
M: National Masonry
P: Landscape Range, Gardenwall Soft Split-Charcoal
- 17 THE GALLERY **Frasers Property**
C: Frasers Property
M: Austral Bricks
P: Everyday Life Paver, Brown
- 18 ST MARY'S NARTHEX **Matt Gibson Architecture + Design**
C: Ducon Maintenance
M: Recycled Brick
- 19 THE HERMITAGE **Moir Landscape Architecture**
C: B&K Revegetation/Pacific Brick Paving
M: Adbri Masonry
P: Paving, Unipave
- 20 SHERWOOD JOB **Roslyn Murray Architects**
C: HNT Builders
M: National Masonry
P: Designer Range, Split Face-Platinum
- 21 RUTHVEN STREET **STREETScape REDEVELOPMENT, TOOWOOMBA** **LAUD ink**
C: Toowoomba Regional Council
M: Adbri Masonry
P: Paving, Euro Honed
- 22 LOWER BEECHMONT **Junglescapes Landscaping Contractors**
M: National Masonry
P: Landscape Range, Modernstone-Charcoal
- 23 MALCOMSON ST **RETAINING**
C: Seaforth Civil
M: National Masonry
P: Keystone Tri Plane Unit

BRUCE MACKENZIE LANDSCAPE AWARD ENTRANTS INDEX

C: CONTRACTOR M: MANUFACTURER P: PRODUCT

- 1 ROCHEDALE**
Metricron
M: National Masonry
P: Designer Range, Polished Face- Alabaster
- 2 NATIONAL STORAGE**
CARRARA
Steel Storage
C: Impact Bricklaying
M: National Masonry
P: Designer Range, Split Face- Charcoal
- 3 J. PATRICK AND M. BRIDGER RESIDENCE**
Fineline Design & Drafting
C: GSG Bricklaying
M: Austral Masonry
P: GB Smooth, Smooth Pewter
- 4 HARVEY TAYLOR HOUSE**
Philip Leeson Architects
C: Magnific Bricklaying
M: Adbri Masonry
P: Architectural Masonry, Designer Masonry Honed
- 5 WAVERLEY CHRISTIAN COLLEGE**
C: Build It Brick
M: National Masonry
P: Designer Range, Honed Face- Charcoal
- 6 ALTERATIONS AND ADDITIONS TO 1940S SEMI IN CHATSWOOD**
Creative Spaces Architects and Project Managers
P: Concrete Pavers
- 7 EARLY LEARNING CENTRE AND LIBRARY TALLANGATTA**
JWP Partnership
M: National Masonry
P: Designer Range, Honed face- Alabaster
- 8 PHC MEDICAL CENTRE CORRIMAL**
Shellshear Young
C: JR Brick & Blocklaying
M: Austral Masonry
P: GB Honed, Honed Nickel
- 9 MT MARTHA HOUSE**
Edition Office
C: Keane's Contracting
M: National Masonry
P: Designer Range, Smooth face- Alabaster
- 10 LIGHTHOUSE ROOM 11**
C: Lawless Builders
M: Adbri Masonry
P: Grey Block, Grey
- 11 ASHLAR**
SJB
C: Growthbuilt
M: Austral Masonry
P: GB Smooth, Smooth Pebble
- 12 BRICK HOUSE**
Andrew Burges Architects
C: Shane Green Building
P: Petersen Tegl Kolumba K11 bricks
- 13 BENALLA BASE**
HOSPITAL
Clarke Hopkins Clarke
C: Matt Godden Bricklaying, Bob Carland Bricklaying
M: National Masonry
P: Designer Range, Honed Face- Charcoal
- 14 SHREC**
Budden, Nangle, Michael, Hudson Architects
C: Watpac
M: Adbri Masonry
P: Architectural Masonry, Designer Masonry Honed
- 15 B. JOHNSON AND S. BRIGDON RESIDENCE**
Nadine K Drafting and Design
C: Bruce McDonald
M: Austral Masonry
P: GB Honed, Honed Pebble
- 16 MAXWELL ST**
YARRALUMLA
Adam Hobill Design
C: Territory Bricklaying
M: Austral Masonry
P: Architec Smooth, Smooth Charcoal
- 17 CLUB ARMSTRONG**
Hyball
C: G J Reid
M: Austral Masonry
P: GB Veneer Honed, Honed Porcelain
- 18 SANCTUARY COVE**
TJV Design
C: Impact Bricklaying
M: National Masonry
P: Designer Range, Polished face- Charcoal
- 19 PACIFIC PINES**
FOOTBALL CLUB
Debian Homes
M: National Masonry
P: Designer Range, Honed Face- Paperbark
- 20 ROYAL NEWCASTLE HOSPITAL SITE**
dwp
C: Masonry Constructions
M: Austral Masonry
P: Architec Split Face, Split Face Alabaster
- 21 GUILFOYLE STREET, YARRALUMLA**
DNA Architects
C: Magnific Bricklaying
M: Adbri Masonry
P: Architectural Masonry, Designer Masonry Honed
- 22 LIVING EDGE SHOWROOM & COMMERCIAL OFFICE**
Richards and Spence
C: Twidale Constructions
M: Austral Masonry
P: GB Smooth, Smooth Porcelain
- 23 SOUTH PINE SPORTS COMPLEX**
AECOM
C: Total Blox
M: National Masonry
P: Designer Range, Split Face- Alabaster, Honed Face- Platinum
- 24 MAGDALA TOWNHOUSES**
PL Building Design
C: Ampson Developments
M: Adbri Masonry
P: Architectural Masonry, Sandhurst Stone
- 25 TOWNHOUSES**
MIDDLE PARK
Aldo Ventieri Architect
C: Blockwork Orange
M: National Masonry
P: Designer Range, Polished face- Charcoal
- 26 WERE ST BRIGHTON**
Victorian Drafting & Design
C: Brick & Block Victorian
M: Adbri Masonry
P: Architectural Masonry, Sandhurst Stone
- 27 HOUSE TO CATCH THE SUN**
MAKE architecture
C: Brad Mogford- Mogford and Glenn Bricklaying
M: Austral Masonry
P: Architec Honed/ Honed Pearl Grey
- 28 DAWS ROAD**
DONCASTER EAST
Bruce Henderson Architects
C: JG King
M: National Masonry
P: Designer Range, Polished Face- Charcoal
- 29 ELWOOD HOUSE**
Preston Lane
C: Mick Wood
M: National Masonry
P: Designer Range, Smooth Face- Pearl Grey
- 30 THE BOULEVARD**
ABERFELDIE
Archsign
C: Ram Builders
M: National Masonry
P: Designer Range, Polished face- Alabaster
- 31 AMENITIES BLOCK AT OAKVALE FARM AND FAUNA WORLD**
Oakvale Farm & Fauna
M: Austral Masonry
P: GB Sandstone Rock Face, Sydney Blend
- 32 ST LUCIA HOUSE**
Shane Thompson Architects
C: Lee Bricklaying Services
M: National Masonry
P: Designer Range, Smooth Face- Alabaster
- 33 RESIDENTIAL**
BUCKRA BENDINNI
G.J. Gardner Homes Coffs Harbour
M: Austral Masonry
P: GB Sandstone Rock Face, Rock Face Sydney Blend
- 34 CURRARONG HEMP HOUSE**
Dom Hage Designs
C: Marsh to Mansion
- 35 MT MARTHA HOUSE**
Bird de la Coeur Architects
C: James Launder
M: Boral Masonry
P: 200mm Series, Designer
- 36 BARWON HEADS HOUSE**
MMBW Architecture Studio
C: Ashley Crowe
M: National Masonry
P: Designer Range, Honed Face- Pearl Grey
- 37 BETTERPET VETS- VETERINARY CLINIC**
Betterpet Vets
C: Fergus Builders
M: National Masonry
P: Designer Range, Polished face- Alabaster
- 38 RIVERSTONE POLICE STATION**
Gardner Wetherill & Associates
C: Modern Masonry
M: Austral Masonry
P: Solitary Split Face, Split Face Beach
- 39 JUBILEE PLACE**
Liefting Merlo Homes
M: Austral Masonry
P: GB Honed, Nickel

- 1 MONET 55**
Carter Grange
C: Monier Roofing Specialist
M: Monier Roofing
P: Cambridge, Soho Night
- 2 THE ESPLANADE**
PRIVATE RESIDENCE
Echelon Group
C: TDR Roofing
M: Bristle Roofing
P: La Escandella, Planum Oyster
- 3 MODERN MALVERN**
Paul Delany Architects
C: Tiler Roofing
M: Bristle Roofing
P: Terracotta Roof Tiles, Planum Roja
- 4 GLENVILL PROJECT IN NORTH CAULFIELD**
Glenvill Internal Design
C: Tadwin
M: Boral Roofing
P: Swiss, Tuscan Blend with Antique Bronze
- 5 RYDE**
Russell Scott Design
C: Joe Stipo
M: Bristle Roofing
P: Terracotta Roof Tiles, Planum Slate
- 6 MONTPELLIER 51**
Carlisle Homes
C: Monier Roofing Specialist
M: Monier Roofing
P: Horizon, Barramundi
- 7 CLELAND ST**
MT CLAREMONT
Distinctive Homes
M: Monier Prime
P: Concrete Horizon, Oyster
- 8 ELABANA**
C: McKenzie Roofing NSW
M: Boral Roofing
P: Shingle Ghost Gum Grey
- 9 RAVID PROJECT IN NORTH CAULFIELD**
Ravida Internal Design
C: Staker Roofing
M: Boral Roofing
P: Linea Charcoal Grey
- 10 PLENTY HOMESTEAD**
Levan Design
C: Gembrook Roofing
M: Bristle Roofing
P: Terracotta Roof Tiles, Planum Slate
- 11 THE KENTHURST**
Felton Constructions
C: Mackenzie Roofing
M: Boral Roofing
P: Vogue Charcoal Grey
- 12 RE-ROOFING OF ROYAL NORTH SHORE HOSPITAL**
C: TCQ Construction
M: Bristle Roofing
P: Grande, Roja
- 13 EMU PLAINS**
Distinct Innovations
C: Chris Camenzuli
M: Bristle Roofing
P: Terracotta Roof Tiles, Planum Caviar
- 14 AMAROO AGED CARE FACILITY 'WANDOO'**
Gary Batt & Associates Architects
C: Reddi Roofing
M: Bristle Roofing
P: Swan Valley Collection, Marseille Range Terracotta
- 15 FADI RESIDENCE**
Creative Spaces Architects and Project Managers
C: Monier Roofing Specialist
M: Monier Roofing
P: Marseille, Titan Gloss
- 16 BOSTON MANOR**
C: Romark Design
M: Bristle Roofing
P: Terracotta Roof Tiles, Planum Slate
- 17 SANAA**
C: Monier Roofing Specialist
M: Monier Roofing
P: Madison, Soho Night
- 18 THE KINGSCOTT**
Binet Homes
C: Boral Roofing- Supply & Fix
M: Boral Roofing
P: Shingle Sydney Red
- 19 TERRACOTTA RE ROOF**
BURNT OCHRE GRANDE
Angus Cowan Constructions
C: Bristle Roofing
M: Bristle Roofing
P: Terracotta Roof Tiles, Marseille Burnt Ochre
- 20 RAYNE**
C: Boral Roofing SA
M: Boral Roofing
P: Shingle Metallics, Meteor
- 21 HERBERT PROPERTY**
Adenbrook Homes
C: Monier Roofing Specialist
M: Monier Roofing
P: Traditional, Barramundi
- 22 MARRIOT GRANGE**
Porter Davis
C: Monier Roofing Specialist
M: Monier Roofing
P: Madison, Soho Night
- 23 MATER HOSPITAL**
BRISBANE RE-ROOF
M: Bristle Roofing
P: Terracotta Roof Tiles, Marseille Roja
- 24 SONNYMEADE PLACE**
RP Constructions
C: Monier Roofing Specialist
M: Monier Roofing
P: Madison, Soho Night
- 25 LOCH AVENUE**
Carter Grange
C: Monier Roofing Specialist
M: Monier Roofing
P: Nouveau, Peak
- 26 GREEN TREE DESIGNS**
Green Tree Designs
C: Inspired Residential
M: Monier Roofing
P: Horizon, Barramundi
- 27 LONGHURST RESIDENCE**
Hopwood Homes
C: Monier Roofing Specialist
M: Monier Roofing
P: Marseille, Mystic Grey
- 28 FLOREAT HOME**
Milankov Designs and Project Management
C: TDR Roofing
M: Bristle Roofing
P: La Escandella, Planum Slate
- 29 HAWTHORN PAVILIONS**
Zeno Entity
M: Bristle Roofing
P: Terracotta Roof Tiles, Planum Cocoa
- 30 WILSTON BUNGALOW**
Push
C: Cramb Brothers
P: Recycled Wunderlich
- 31 BROOKWATER B**
Porter Davis
C: Monier Roofing Specialist
M: Monier Roofing
P: Horizon, Barramundi
- 32 KEW ANGLES**
Paul Delany Architects
M: Bristle Roofing
P: Terracotta Roof Tiles, Planum Slate
- 33 SAN FERNANDO**
Blaine Watson
C: Newstart Homes
M: Bristle Roofing
P: Concrete Roof Tiles, Classic Coal
- 34 AEGIS BALMORAL AGED CARE FACILITY**
Montague Grant Architects
C: Dowthwaite
M: Bristle Roofing
P: Swan Valley Collection, Vienna Range Moonstone
- 35 NORAH HEAD**
LIGHTHOUSE
C: LMR Roofing
M: Boral Roofing
P: French Sydney Red