

THINK
BRICK
AWARDS 2023
UNEARTHED

UNEARTHED

THINK
BRICK
AUSTRALIA

CMAA
CONCRETE MASONRY
ASSOCIATION OF AUSTRALIA

ARTA
AUSTRALIAN TERRAZZO ASSOCIATION

UNEARTHED

Bricks, blocks, pavers and tiles play starring roles in the most breathtaking buildings, from pyramids and palaces to today's awe-inspiring addresses. They also preserve human history, shape the present and propel progress.

The age-old alchemy of architecture and masonry continues to unearth new innovations.

View all winners and finalists videos on the
[Think Brick Awards 2023 Playlist](#)

(Available on the [Think Brick Australia](#) Youtube)

CONTENTS

2023 JURY	4
HORBURY HUNT COMMERCIAL AWARD	6
HORBURY HUNT RESIDENTIAL AWARD	20
KEVIN BORLAND MASONRY AWARD	34
ROBIN DODS ROOF TILE EXCELLENCE AWARD	46
BRUCE MACKENZIE LANDSCAPE AWARD	56
NEW ENTRANT AWARD	65





MARK TROTTER

DIRECTOR

FULTON TROTTER ARCHITECTS

In the world of architecture, bricks, blocks, pavers and roof tiles will always stand the test of time. Thanks to their versatility, durability and aesthetic appeal, these earthly staples have played starring roles in countless structures throughout history and continue to do so today.

With a nod to the past and an eye on the future, UNEARTHED, the theme for this year's Think Brick Awards was born.

UNEARTHED pays homage to the rich history of Australia's built environment while celebrating the application of age-old crafts in our nation's newest constructions.

As the head juror for UNEARTHED, I was honoured to sift through 140 remarkable projects in a bid to unearth a crop of architectural marvels. Contributing to the rigorous awards selection process and helping shape the future of brick, block, roof and landscape designs was a responsibility I cherished deeply.

Being an immediate past winner of the Think Brick Awards gave me a unique perspective and allowed me to appreciate the transformative power of industry recognition – and the opportunities it brings.

As always, the diverse judging panel consisted of esteemed experts from across Australia. Thank you to my partners in this endeavour: Chris Major (Welsh + Major), Andrew Benn (Benn+Penna), Claire Martin (OCULUS) and Think Brick's former CEO, Elizabeth McIntyre.

Together, we embarked on a meticulous evaluation journey, seeking out projects that demonstrated exceptional creativity, functionality, sustainability and overall impact.

Our combined expertise engendered debates that elevated ideas and awareness. As such, the 2023 awards brought about an intriguing mix of winners. Some entries stood out as clear frontrunners, while others emerged as unexpected gems that defied conventions and pushed design boundaries in captivating ways.

This blend of obvious choices and surprise packages demonstrates the complexity of the judging process and affirms Think Brick Australia's commitment to unearthing raw, homegrown talent and showcasing design excellence.

Congratulations to every entrant. The ingenuity and artisanship on display was astounding.

May you all continue to build, pave and tile the way toward an increasingly bright future.



MARK TROTTER

FULTON TROTTER ARCHITECTS

Fulton Trotter Architects was founded in 1946 out of two pre-war practices. The firm courageously explored Modernism in the new post war austerity environment of the late 1940s. In the 1960s, Stephen Trotter's (Mark's father) emergence saw a new climatic-based architecture.

Mark has devoted his career, which spans four-and-a-half decades, to creating meaningful and practical spaces that change the way people live by working closely with clients, building users and communities. Over the course of 30-plus years as the Director of Fulton Trotter Architects, Mark has established himself as a prominent leadership figure within industry, academia and charitable organisations.

Recently, he was appointed Chief Investigator for a National Health and Medical Research Council-funded research project about intergenerational living and learning. Previously, Mark was awarded a Churchill Fellowship to research the design of schools for disengaged youth.

He is an Adjunct Professor at Queensland University of Technology and has held numerous leadership positions with the Association for Learning Environments.



CHRIS MAJOR

WELSH + MAJOR

Chris Major is a Founding Partner of the multi-award-winning practice Welsh + Major Architects, which she established with David Welsh in 2004.

She is an active member of the Australian Institute of Architects and supports architectural education through teaching at the University of Newcastle, regular lecturing at The University of Sydney, and participation in design panels and juries.

Chris's reputation for delivering responsive and engaging architecture in the public and private realm is renowned. So much so, that she has been part of the fabric of the Think Brick Awards for more than a decade – as an entrant and a juror. Chris has even written a brief for the Robin Dods Roof Tile Excellence Award.

Welsh + Major's portfolio includes public spaces and private homes, restaurants and bars, galleries and shops, workplaces, and the reinvention of historic buildings. Their Seagrass House project received a High Commendation in the 2022 Horbury Hunt Residential Award category.



ANDREW BENN

BENN + PENNA

Andrew Benn is the Founding Owner & Director of the award-winning architectural and interior design consultancy Benn + Penna. Andrew is a NSW registered architect who graduated from the University of New South Wales in 2001 with first class honours.

After numerous years working within some of the most highly regarded architectural offices in Australia and abroad, including the renowned Dutch office of UN Studio in Amsterdam, and the Sydney offices of Engelen Moore and BVN, he launched his own practice in 2012.

In 2014 & 2020 the practice was honoured with NSW Architecture Awards in the residential categories, whilst in 2019 it was honoured with a NSW Architecture Commendation for heritage – each being one of the highest accolades possible for architecture in NSW. Demonstrating his high standing among his peers, in 2021, Andrew was selected as a jury chair for the NSW AIA architecture awards.

Benn + Penna's Henley Clays House won Think Brick Australia's 2020 Horbury Hunt Residential Award.



CLAIRE MARTIN
OCULUS

Claire Martin is a Registered Landscape Architect and Associate Director of OCULUS. She is a Fellow and Immediate Past President of the Australian Institute of Landscape Architects, and Chair of the International Federation of Landscape Architects (Asia-Pacific Region) Climate Change Working Group.

Claire pursues her passion for design education, advocacy and communication as a member of the Office of the Victorian Government Architect's Victorian Design Review Panel, a contributing editor of Landscape Architecture Australia, and a regular guest lecturer at RMIT University (where she has taught, as an invited critic, and a member of the Landscape Architecture Industry Advisory Committee).

OCULUS is no stranger to the Think Brick Awards, having won the 2020 Bruce Mackenzie Landscape Award for their work on the Arkadia development, which set a new benchmark for sustainability in Alexandria, Sydney. Claire also collaborated with Searle x Waldron Architecture and RBA on the Joyce Chapel Bridge which won the Bruce Mackenzie Landscape Award in 2022.



ELIZABETH MCINTYRE
FORMER CEO TBA, CMAA & ARTA

Passion has powered Elizabeth McIntyre's impressive, multi-disciplinary career path for more than two decades. Her leadership and expertise - which spans governance, brand development, marketing and organisational change - has been an asset to Think Brick for the past 13 years.

During her tenure with Think Brick Australia, transforming the Think Brick Awards into Australia's richest architectural design competition and launching the popular Think Brick and Concrete Conversations podcasts have been among Elizabeth's notable achievements.

Prior to joining Think Brick, she held executive positions at Walt Disney Television, the Australian Turf Club and Sports Entertainment Limited. Elizabeth now heads up the Outdoor Media Association as CEO.

AWARDS JURY 2023

HORBURY HUNT COMMERCIAL AWARD

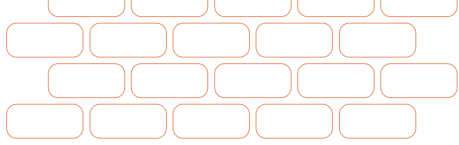
THIS AWARD WAS INITIATED BY THE
HORBURY HUNT CLUB AND BY REQUEST
FROM ARCHITECTS AND DESIGNERS.

The award's purpose is to honour innovation and craftsmanship in brickwork and to recognise the contribution of architects, builders, bricklayers and manufacturers in that process.

The Horbury Hunt Commercial Award category includes built projects that exemplify outstanding craftsmanship and innovation through the use of clay face brick and pavers. The award is named after John Horbury Hunt (1838-1904), a renowned architect who came to Australia from America in 1863. Hunt was known for introducing his distinctive and radical architecture to Sydney and rural New South Wales, including St Peter's Anglican Cathedral in Armidale and Convent of the Sacred Heart and Tivoli in Rose Bay.

Photographer: Clinton Weaver





Think Brick Australia represents Australia's clay brick and paver manufacturers.

Think Brick's purpose is to ensure clay brick is recognised as a pre-eminent building material by leading architects, developers, builders and property owners. We are committed to promoting exemplary building and landscape design using clay bricks and pavers.

We create national campaigns to inspire designers, builders and consumers to use clay brick as a contemporary, versatile and inspiring building material.

8

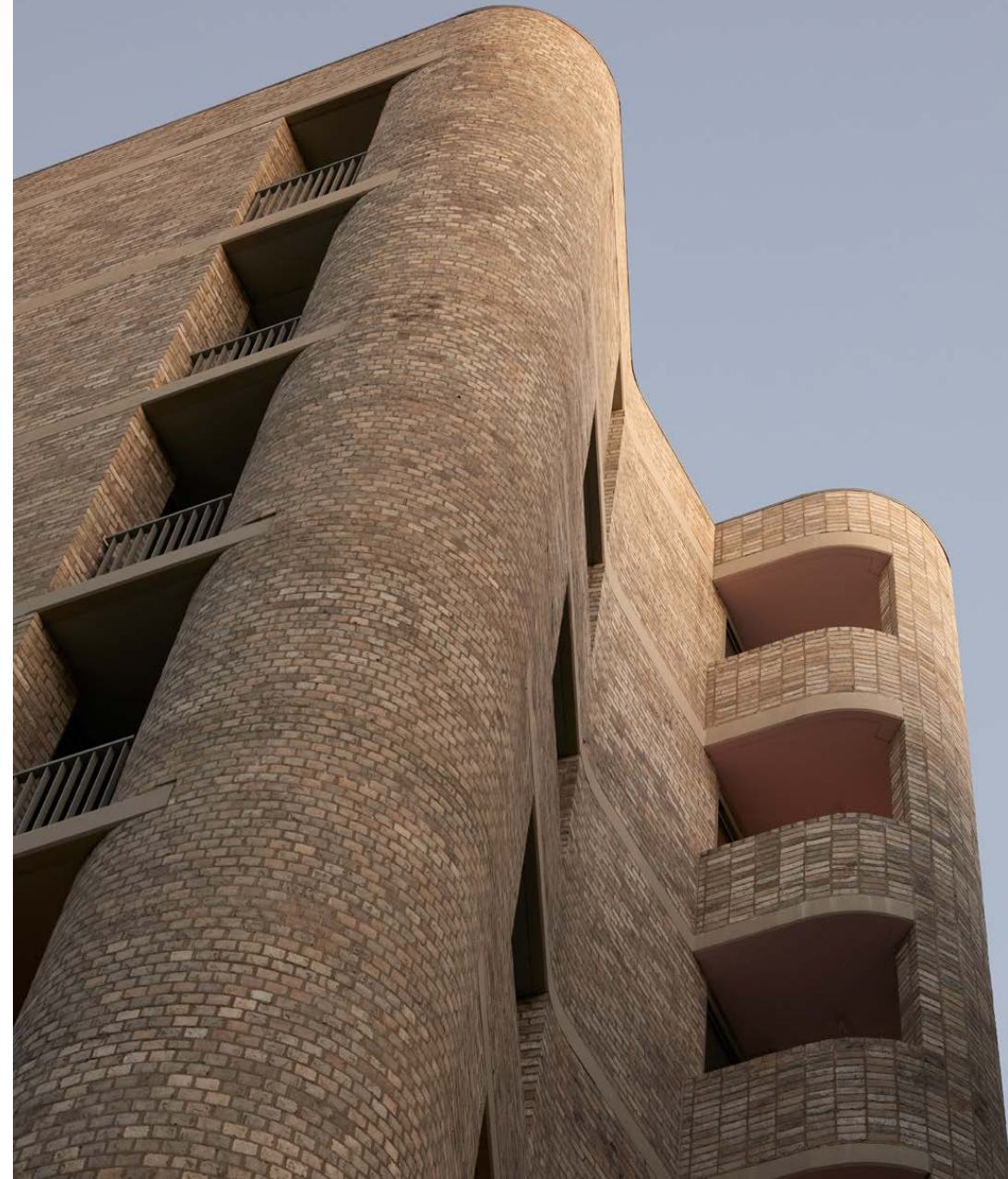
HUNTINGTON

S J B

Honeysuckle Drive is part of the urban renewal corridor in Newcastle's Honeysuckle Precinct. This area, which was previously defined by its large-scale commercial operations, is now evolving into a multi-faceted, integrated foreshore precinct with a finer urban grain.

Poised to play a key role in enlivening the precinct is Huntington at 35 Honeysuckle, a new mixed-use residential development (comprising approximately 90 apartments across three distinct architectural forms) with an active retail node.

Responding to the site's location and industrial history, two buildings showcase a warm blend of masonry that incorporates cloudy silver and smoky cashmere tones. This material palette creates an aesthetically pleasing texture and sense of presence.



MANUFACTURER Austral Bricks
BRICK COLLECTION San Selmo Smoked - Grey Cashmere & Cloudy Silver
BUILDER Doma Group

THINK BRICK AWARDS 2023

2023 JURY STATEMENT

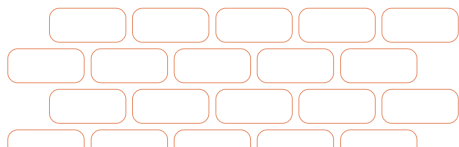
“Reminiscent of iconic Louis Kahn projects, Huntington showcases brickwork in its monolithic form, which is not an easy thing to do in architecture. The bold, singular use of brick has given the building a fabric-like quality and addressed the project’s scale and prominent location with an exceptional interplay of restraint and materiality. Its clever articulation and attention to detail is sure to encourage people to be committed to using brickwork and doing it well.”

WINNER

HORBURY HUNT
COMMERCIAL
AWARD 2023



Photographer: Tom Roe



10

THE CROSSING
CHROFI ARCHITECTS
DE ROME ARCHITECTS
DE ZIGNT EAM

**HIGH
COMMENDATION**

HORBURY HUNT
COMMERCIAL
AWARD 2023



The Crossing is a mixed-use development located at the threshold between Newcastle's civic town centre and the harbour.

Inspired by the towering volumes and materiality of the historic Great Northern Hotel, The Crossing was conceived as a composition of four brick towers placed on a podium that is textured by punctured openings, exquisitely detailed brickwork and extensive greenery.

Light brick wraps around all four sides of the towers and frames views of the harbour and city.

MANUFACTURER Bowral Bricks
BRICK COLLECTION Bowral76 - Chillingham White
BUILDER Hutchinson Builders
CONTRACTOR Garry Prettv Bricklaying

Photographer: Clinton Weaver,
Matt Carbone

ST MARGARET'S SPORTS PRECINCT

BLIGHT RAYNER ARCHITECTURE

Photographer: Christopher Frederick Jones



HIGH
COMMENDATION

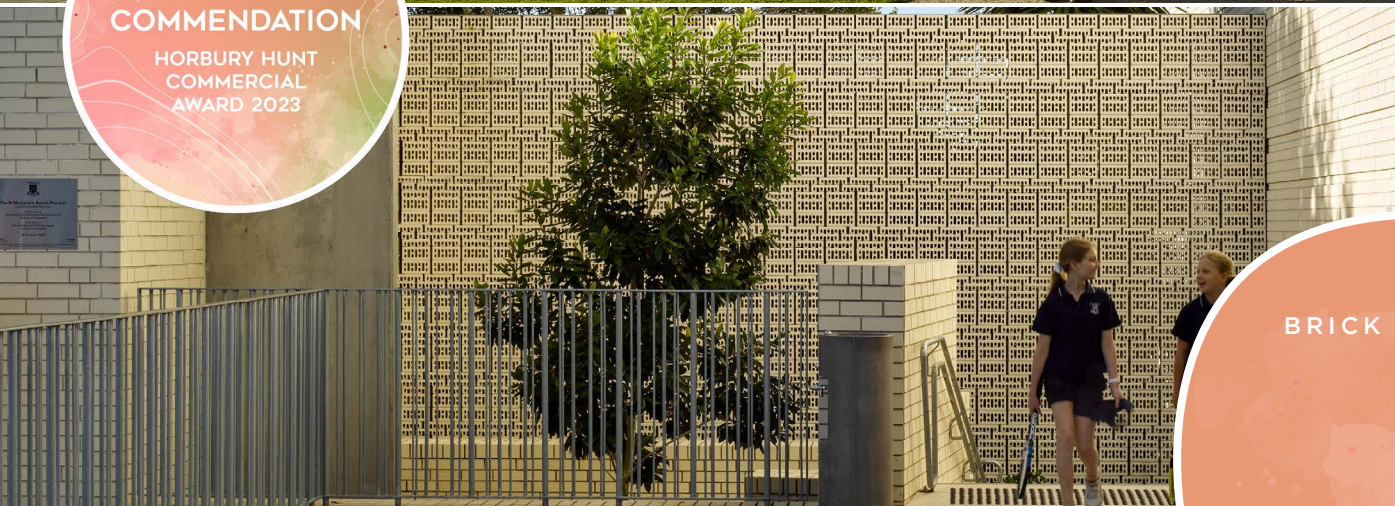
HORBURY HUNT
COMMERCIAL
AWARD 2023

St Margaret's Anglican Girls School Sports Precinct was designed to inspire students through architecture that invites participation.

Bricks were specifically selected and patterned to form this precinct, which is located on the side of a hill in suburban Brisbane.

A series of new brick buildings now extends out of the site's 'mesa'-like base to continue the existing campus's use of masonry in a dynamically detailed way. These buildings form a generous open space where the whole school community can gather - something that was not previously possible.

The brickwork is highlighted in the form of running bonds and patterning that creates a series of articulated surfaces. These solid and perforated surfaces are reactive to light, create shade and promote ventilation to key spaces.



MANUFACTURER Austral Bricks
BRICK COLLECTION La Paloma - Miro; La Paloma Grande - Miro
BUILDER Tomkins
CONTRACTOR Solutions Built

1 2

WHITTON LANE
JACKSON CLEMENTS
BURROWS ARCHITECTS
DJRD

HIGH
COMMENDATION

HORBURY HUNT
COMMERCIAL
AWARD 2023



MANUFACTURER Austral Bricks
BRICK COLLECTION San Selmo Smoked - Cloudy Silver
BUILDER Hutchinson Builders
CONTRACTOR Brobrik Masonry Contractors



Photographer: Luke Butterly

The Whitton Lane residential and retail development speaks to the ambitious emerging character of its Bondi Junction CBD precinct. This 14-level building responds to the existing design language of its context, strengthens the pedestrian grid and extends the public domain.

Brickwork visually connects Whitton Lane with its heritage surrounds in a distinct way. To offset the solidity of the brickwork, articulated balconies finished in a contrasting material provide shadow play and a level of refined expression. Whitton Lane is a confident, modern and optimistic addition to the streetscape.

THINK BRICK AWARDS 2023

THE ROX

CORE COLLECTIVE ARCHITECTS

HIGH COMMENDATION

HORBURY HUNT
COMMERCIAL
AWARD 2023

Photographer: Adam Gibson

The Rox Apartments make a positive contribution to Hobart's urban realm while respectfully restoring and reinvigorating the surrounding heritage buildings.

The development comprises a new apartment building with 13 apartments and a ground floor commercial space, plus the careful restoration of the historic Scotch College at the rear of Roxburgh House to accommodate two new apartments.

The design team drew on nearby buildings to inform the architectural expression. This included curved corners in reference to the locale's white brick Art Deco buildings.

A lime mortar bagging was applied to the upper levels, visually softening the brick patterning and enhancing the building's sculptural quality. Chamfered bricks were used at the edges of the upper window reveals to enhance the visual depth of the wall and widen the outlook from within the private residences.



MANUFACTURER Austral Bricks
BRICK COLLECTION Yarra - Fitzroy & Parkville;
 Access - Ash; La Paloma - Gaudi
BUILDER Vos Construction & Joinery
CONTRACTOR All Brick Tasmania

HORBURY HUNT COMMERCIAL AWARD ENTRANTS

1. CAMPERDOWN MEMORIAL REST PARK AMENITIES

LAHZNIMMO ARCHITECTS

B & C: Avant Build
M: Other

2. TWO FOLD HOUSE

ODO

B: Senbuilt
C: Squared Bricklaying
M: PGH Bricks & Pavers
P: Pure Linens - Flannel Grey

3. WAVERLEY CHRISTIAN COLLEGE PRIMARY WING

WILLIAMS ROSS ARCHITECTS

B: Harris HMC
C: Trevs Brick and Block Laying
M: Austral Bricks
P: Austral Bricks - Governors - Blanc | Nubrik - Artisan - Wolf

4. LOFTUS APARTMENTS

CARRIER AND POSTMUS ARCHITECTS (CAPA)

B: Dale Alcock Projects
M: Bowral Bricks
P: Burlesque - Indulgent White | Bowral Bricks - Bowral76 - Chillingham White | Midland Brick - Other - Meteor & Meteor 2 Course

5. JUBILEE PLACE

BLIGHT RAYNER ARCHITECTURE

B: Watpac
C: North Australian Contracting
M: PGH Bricks & Pavers
P: Morada - Blanco

6. IGLU SUMMER HILL

BATES SMART

B: Hansen Yuncken
M: Bowral Bricks
P: Bowral76 - St Pauls Cream | Austral Bricks, San Selmo Reclaimed - Reclaimed Original

7. KEW TOWNHOUSES

JACK FUGARO

B: Jafer Constructions
C: Concept Masonry
M: Krause Bricks
P: Emperor 380mm - Ghost Grey

8. THE CARLISLE

MHN DESIGN UNION

B: Charas Constructions
C: StreekBuild Bricklaying
M: Bowral Bricks
P: Bowral76 - Chillingham White & Shorthorn Mix

9. IGLU REDFERN

BATES SMART

B: Richard Crookes
M: Nubrik
P: Pressed Bricks - Chapel Red | Austral Bricks - Symmetry - Terracotta | Bowral Bricks - Bowral76 - Gertrudis Brown & Simmental Silver; Bowral50 - Capitol Red & Gertrudis Brown

10. BOX HILL NORTH PRIMARY SCHOOL

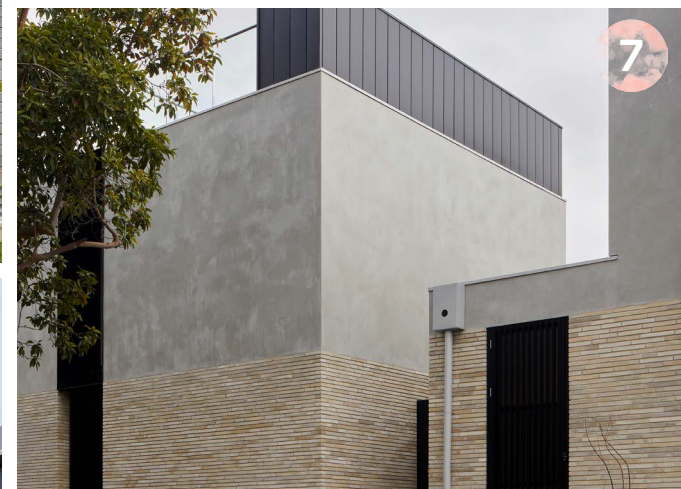
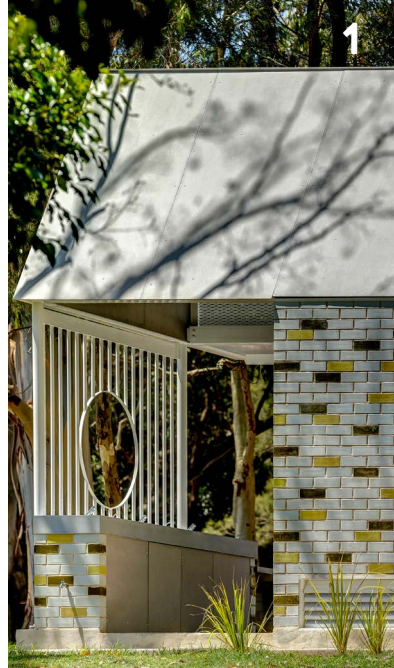
C. SIBLING ARCHITECTURE

B: Simbuilt
C: S&KB Bricklaying
M: Austral Bricks
P: Access - Ash | Nubrik - Pressed Bricks - Acland Cream

11. THE EAVES, WEST VILLAGE

BUREAU*PROBERTS

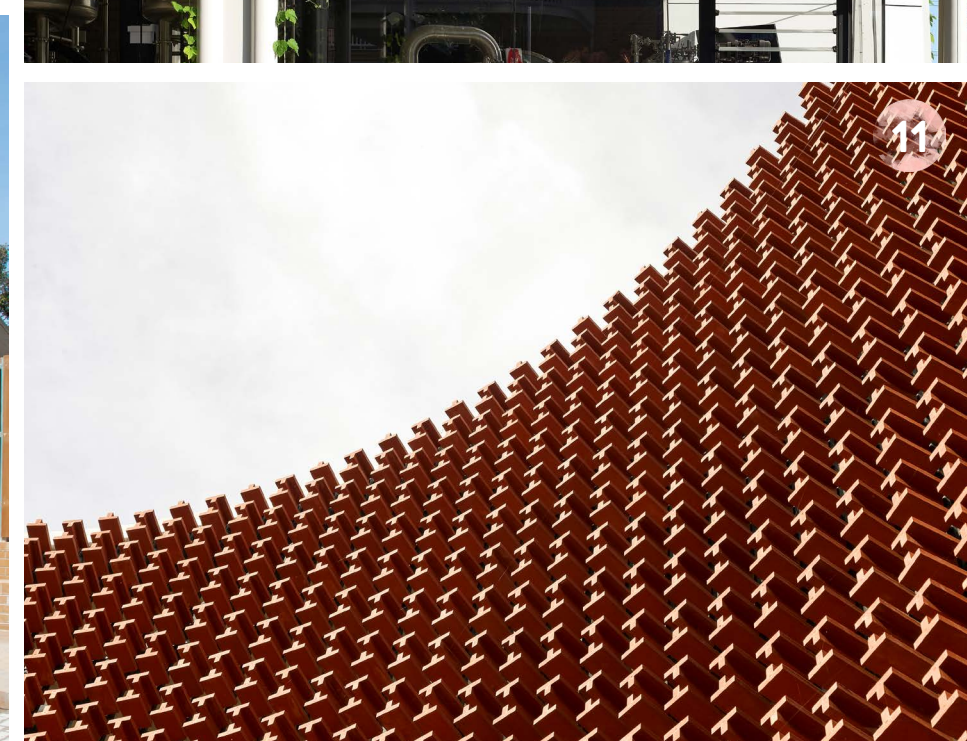
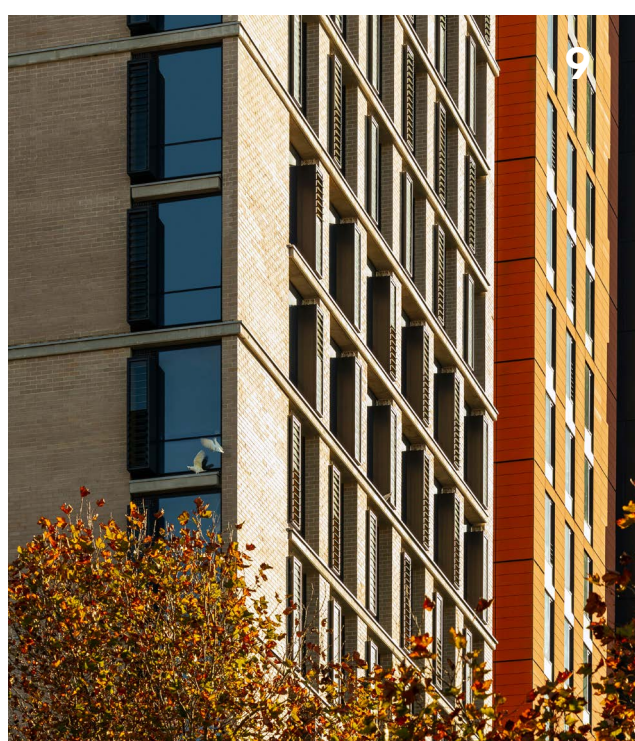
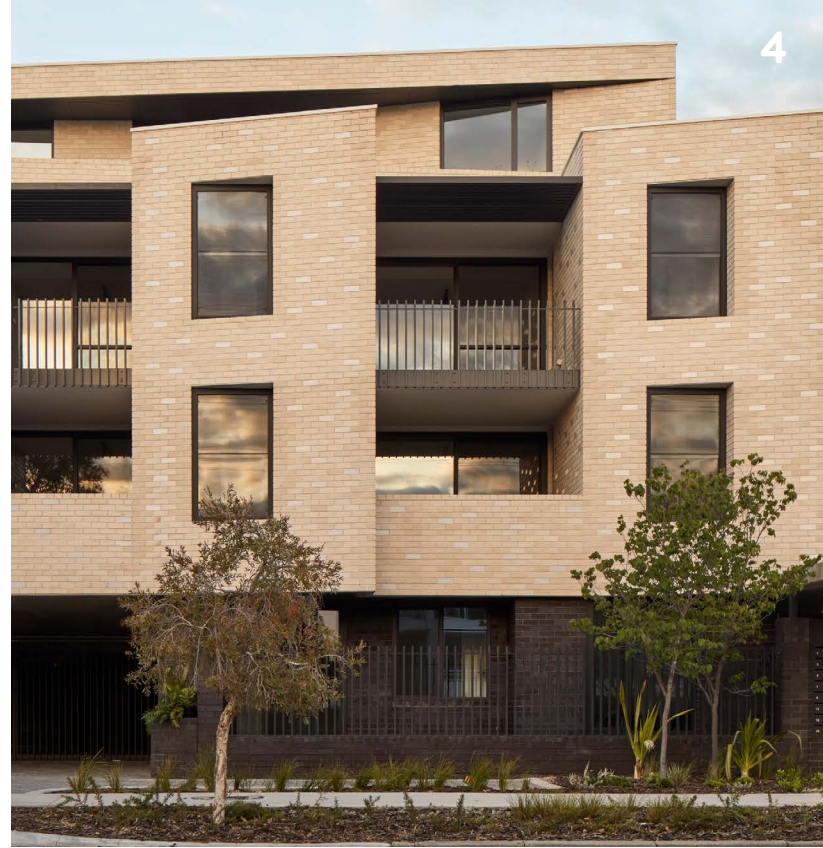
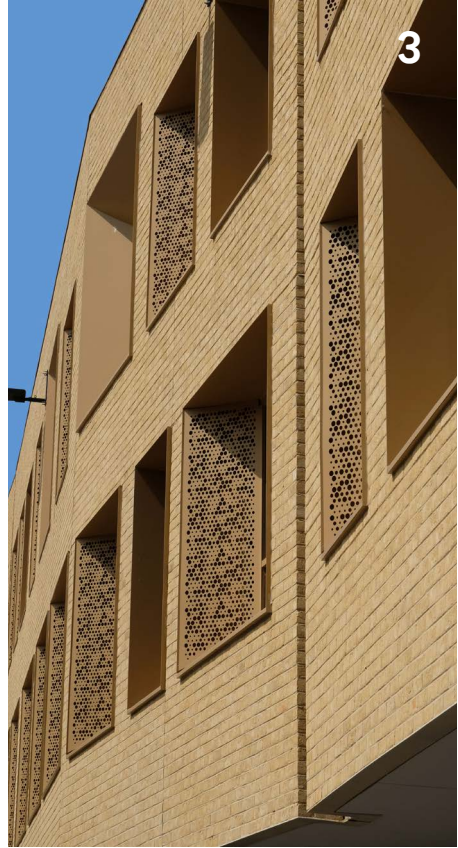
B: Hutchinson Builders
C: PGH
M: PGH Bricks & Pavers
P: PGH Bricks & Pavers - Other - Red

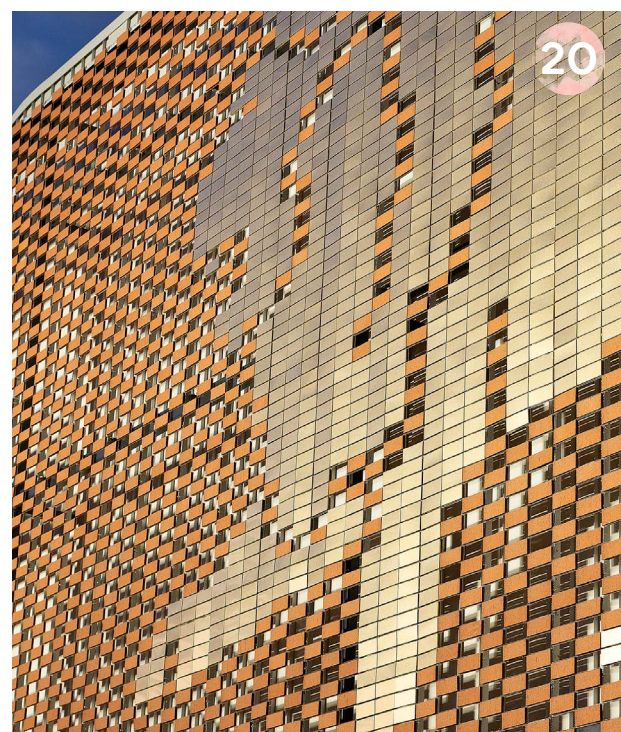
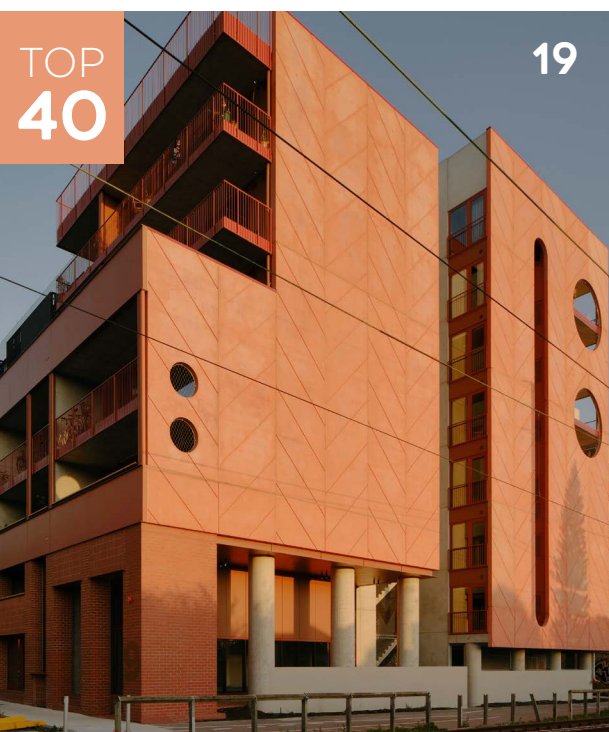
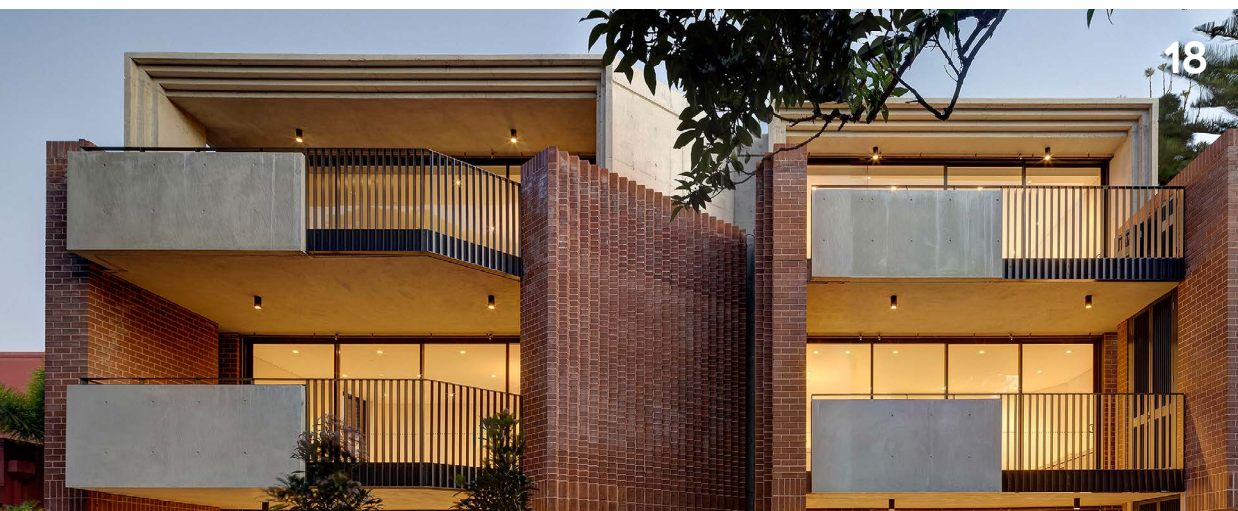


NEW
ENTRANT
2023

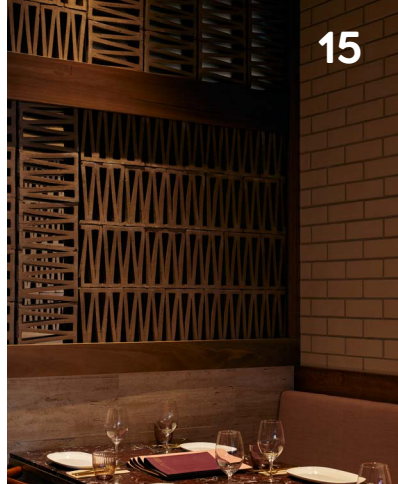
View all the entries online at thinkbrick.com.au

B = BUILDER / C = CONTRACTOR / M = MANUFACTURER / P = PRODUCT

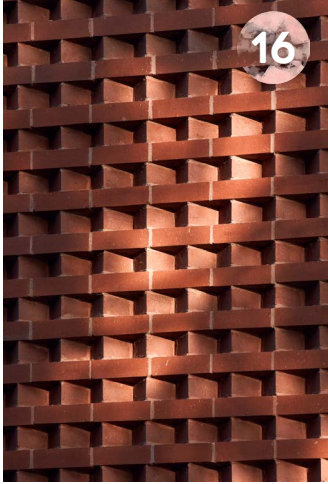




15



16



17



12. BALLYGRIFFIN SENIOR LEARNING CENTRE

LAW ARCHITECTS

B: Magellan Projects
M: Krause Bricks
P: Standard Brick Range - Ghost

13. ALTONA NORTH PRIMARY SCHOOL

WORKSHOP ARCHITECTURE

B: ARC3 Construction
C: Trev's Brick and Block Lane
M: Recycled Bricks

14. CALLINGTON MILL DISTILLERY

CUMULUS STUDIO

B: GLB Constructions
C: Burrigge Bricklaying
M: Recycled Brick | Other
P: San Selmo Reclaimed - Reclaimed Original

15. BABYLON

HOGG & LAMB

B: Hammersmith
C: Tilecorp
M: Austral Bricks
P: La Paloma - Miro

16. INKERMAN & NELSON

MAARCHITECTS

B: Minicon Construction
C: TJL Bricklaying
M: Nubrik
P: Pressed Bricks - Chapel Red | PGH Bricks & Pavers - Wirecut Bricks - Other

17. DOLLY

GENESIN STUDIO

B: DimCo
C: Tectonic Tiling
M: PGH Bricks & Pavers
P: Dry Pressed Architectural - Tinto Cream

18. CONSTANTIA

MHN DESIGN UNION

B: Charas Constructions
C: Plumb and Level Masonry
M: Bowral Bricks
P: Bowral76 - Capitol Red | Austral Bricks, Burlesque - Indulgent White

19. NIGHTINGALE LEFTFIELD

KENNEDY NOLAN

B & C: Hacer
M: Nubrik
P: Pressed Bricks - Chapel Red

20. BRIGHTON HOMES ARENA

C. POPULOUS

B: Hutchinson Builders
C: ABC Bricklaying
M: Nubrik
P: Pressed Bricks - Chapel Red | Other

21. CLIFTON & CENTRAL

MJA STUDIO

B: Willing Homes
C: G&R Bricklaying
M: Austral Bricks
P: Western Earth - Hannan

22. HUNTER STREET

C. KAIROUZ ARCHITECTS

B & C: Leifting Merlo Homes
M: Krause Bricks
P: Pressed Brick Range - Red/Blue

23. PIRIE ST

WOODS BAGOT

B: Multiplex
C: Ranieri Group
M: Bowral Bricks
P: Custom L Shape - Hereford Bronze

24. DIANELLA COMMUNITY CENTRE

CANVAS PROJECTS

B: Melbcon
C: Lawler Bricklaying
M: Bowral Bricks
P: Bowral76 - Chillingham White

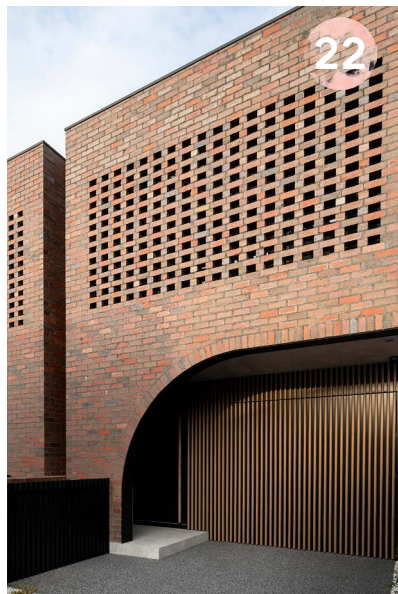
25. THYNE HOUSE

XSQUARED ARCHITECTS

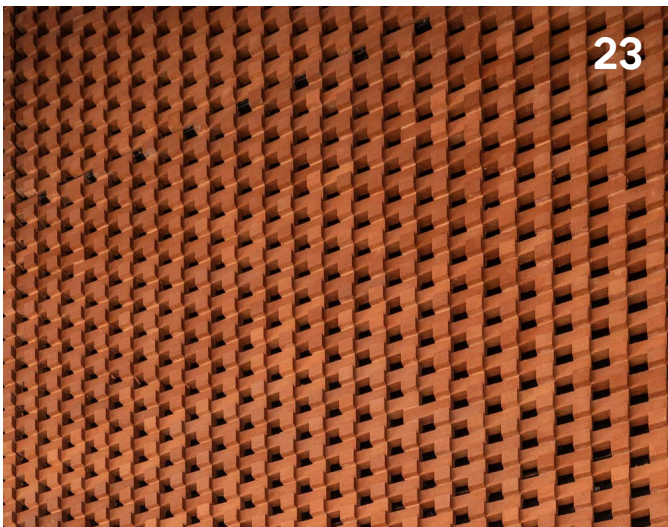
IN ASSOCIATION WITH ROBERT CARROLL & ASSOCIATES

B: Vos Construction & Joinery
C: All Brick Tasmania
M: Daniel Robertson
P: Hawthorn - Custom Black Smooth

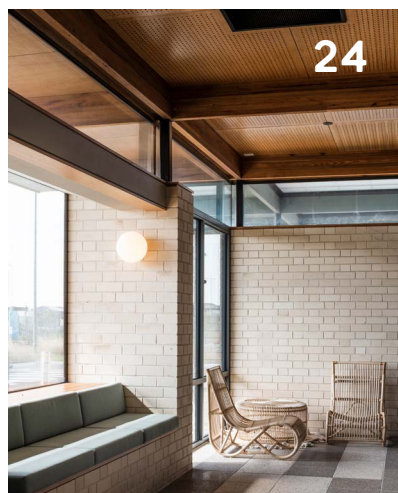
22



23

TOP
40

24



25



HORBURY HUNT COMMERCIAL AWARD
ENTRANTS

NEW
ENTRANT
2023

View all the entries online at thinkbrick.com.au

B = BUILDER / C = CONTRACTOR / M = MANUFACTURER / P = PRODUCT

HORBURY HUNT COMMERCIAL AWARD ENTRANTS

26. DONNYBROOK CAMPUS

BRAND ARCHITECTS

B: Edmanson Constructions
C: TJL Bricklaying
M: Austral Bricks
P: Indulgence - Praline | Other

27. TOORAK ROAD

BIRD DE LA COEUR ARCHITECTS

B: Harris MCM
C: Stuart Dent & Etched Industries
M: Daniel Robertson
P: Hawthorn - Red | Other

28. GENERAL LEARNING CENTRE - WILSONTON STATE HIGH SCHOOL

ARKLAB ARCHITECTURE

B: Bryant Building Contractors
M: PGH Bricks & Pavers
P: Smooth - Copper Glow

29. LANEWAY ADAPTIVE TOY FACTORY

ONE20 ARCHITECTS

B: ONE20 Developments
C: AM Thomson
M: Recycled Brick

30. HOLY TRINITY LUTHERAN COLLEGE

BRAND ARCHITECTS

B: RA Plazzer Builders
C: Ed Johnson Bricklaying
M: PGH Bricks & Pavers
P: Essentials - Gypsy Rose; Velour - Crevole

31. ST VINCENT'S CARE SERVICES, KEW

SMITH + TRACEY ARCHITECTS

B: ADCO Construction
C: Northern Bricklayers Construction
M: PGH Bricks & Pavers
P: Aspect - Glenfern; Pure Velvets - Warmed Stone; Smooth - Red; Velour - Red & Taupe Grey

32. MILLARD PLACE TERRACES GLEBE

WMK ARCHITECTURE

B: DeCode
M: Bowral Bricks
P: Bowral76 - Simmental Silver

33. WALMSLEY RESIDENTIAL AGED CARE

FOREGROUND ARCHITECTURE

B: Ireland Brown Constructions
C: Masters of Masonry
M: Nubrik
P: Artisan - Aurora, Tundra & Wolf

34. HERITAGE LANES

WOODS BAGOT

B: Suncorp Group
C: Mirvac Construction
M: Bowral Bricks
P: Bowral76 - Bowral Brown

35. ZERO GIPPS

SJB ARCHITECTS

B: Coben
C: All Metro Bricks
M: KRAUSE Bricks
P: Emperor 380 mm - Ghost Grey | Recycled Brick

36. ABORIGINAL HOUSING VICTORIA

BREATHE

B: Bowden Corp
C: Trev's Brick and Blocklaying & ROK Landscaping
M: Daniel Robertson
P: Hawthorn470 - Surrey | Austral Bricks - London Range - Brahman Granite

37. HASTINGS PARADE

MHN DESIGN UNION

B & C: K2 Constructions
M: PGH Bricks & Pavers
P: Dry Pressed Architectural - Macarthur, McGarvie Red & Mowbray Blue

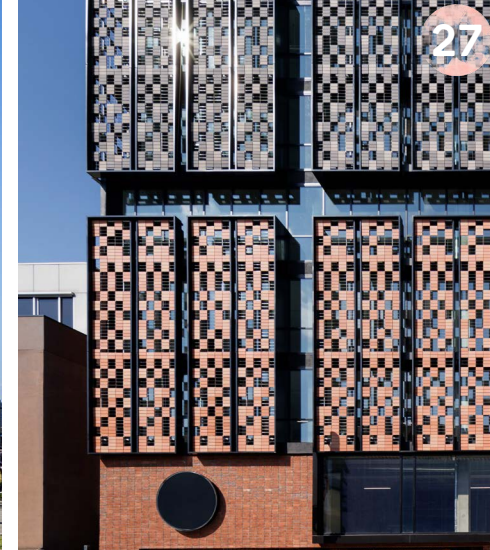
38. QUEENS PARK SPORTS PAVILION

SAM CRAWFORD ARCHITECTS

B: Gartner Rose
C: Build Brick Construct
M: Bowral Bricks
P: Bowral76 - St Pauls Cream



26

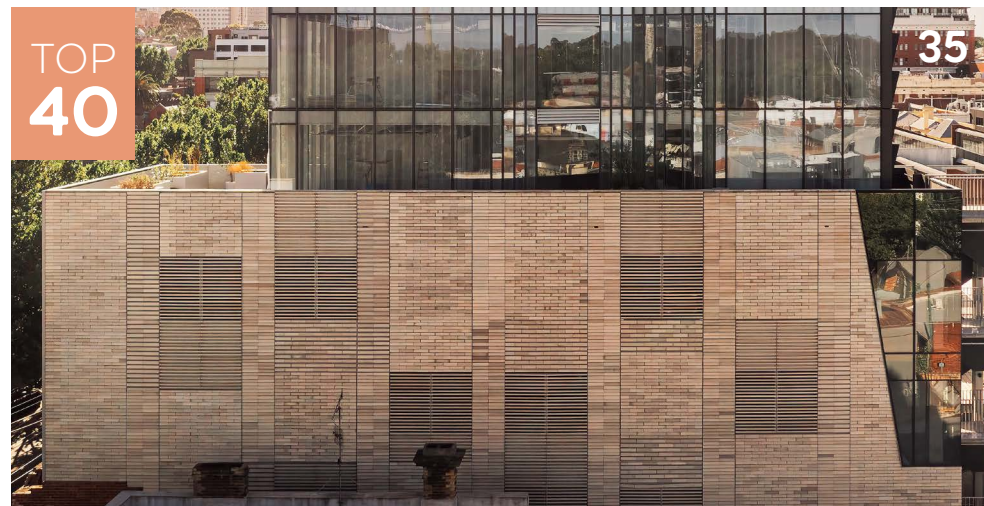


27



TOP
40

31



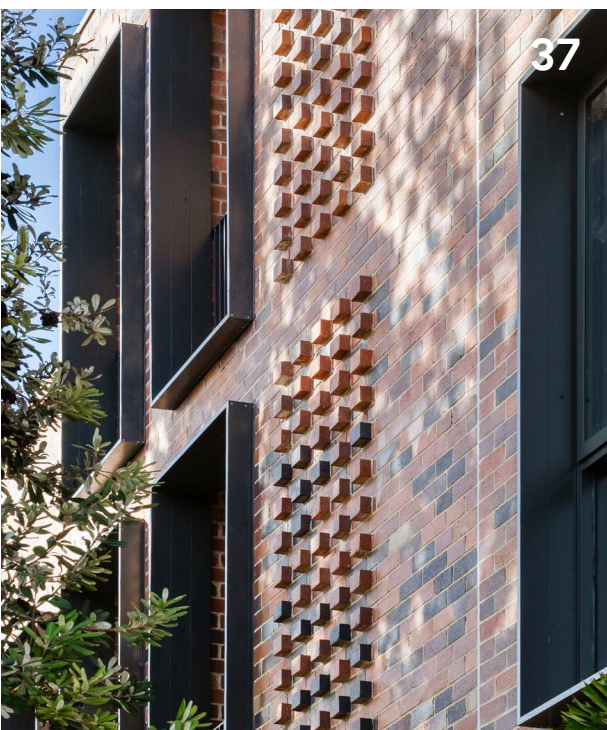
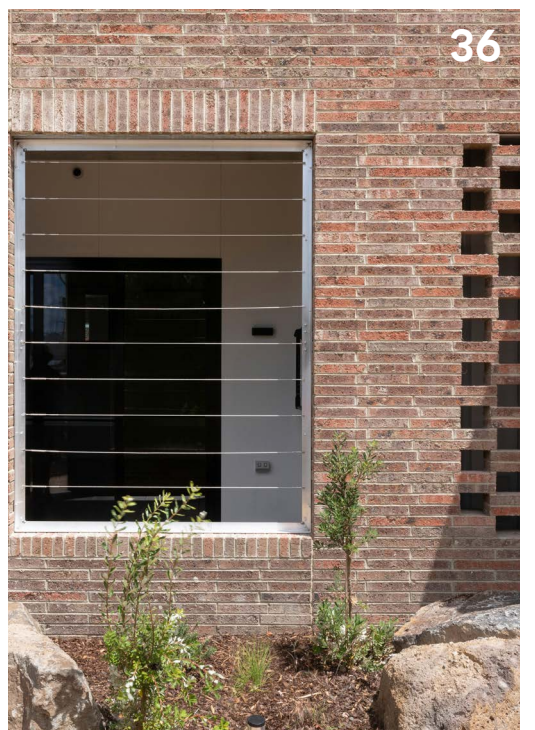
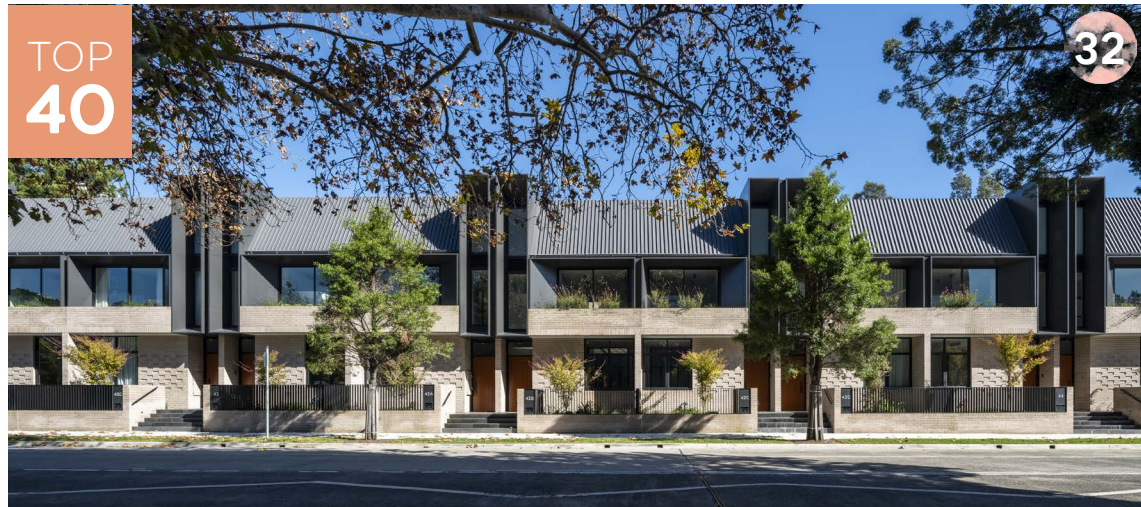
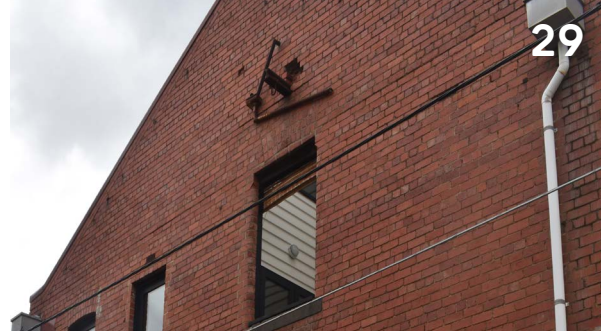
TOP
40

35



View all the entries online at thinkbrick.com.au

B = BUILDER / C = CONTRACTOR / M = MANUFACTURER / P = PRODUCT



HORBURY HUNT RESIDENTIAL AWARD

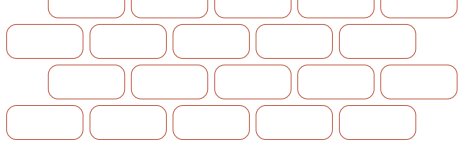
THIS AWARD WAS INITIATED BY THE
HORBURY HUNT CLUB AND BY REQUEST
FROM ARCHITECTS AND DESIGNERS.

The award's purpose is to honour innovation and craftsmanship in brickwork and to recognise the contribution of architects, builders, bricklayers and manufacturers in that process.

The Horbury Hunt Residential Award category includes built projects that exemplify outstanding craftsmanship and innovation through the use of clay face brick and pavers. The award is named after John Horbury Hunt (1838-1904), a renowned architect who came to Australia from America in 1863. Hunt was known for introducing his distinctive and radical architecture to Sydney and rural New South Wales, including St Peter's Anglican Cathedral in Armidale and Convent of the Sacred Heart and Tivoli in Rose Bay.

Photographer: Timothy Kaye





Gathering house
Inarc Architects



Think Brick Australia represents Australia's clay brick and paver manufacturers.

Think Brick's purpose is to ensure clay brick is recognised as a pre-eminent building material by leading architects, developers, builders and property owners. We are committed to promoting exemplary building and landscape design using clay bricks and pavers.

We create national campaigns to inspire designers, builders and consumers to use clay brick as a contemporary, versatile and inspiring building material.

2 2

WATERLOO STREET

S J B

Waterloo Street is a little house freed of the small house typology. With a footprint of 30 square metres and a façade of recycled and broken brick, the property playfully engages with the street through the arrangement and geometry of its openings.

Internally, the residence uses custom brick flooring and custom glazed bricks to add detail and interest. Externally, the dwelling is playful and textured.

A little like a house from a Jacques Tati film, the façade feels alive with personality. Reclaimed bricks form the canvas, discarded broken ones reflect the historic sandstone base of the surrounding streets, while the upper bricks shift in scale to frame windows and support planting.

Most materials used on the project were locally sourced – enabling everyone who engaged with the project to directly understand the supply chain.

Ultimately, the house is about sustainability, doing more with less, reusing a site, re-purposing materials and reimagining ways to create well-connected places.

MANUFACTURER Krause Bricks

BRICK COLLECTION Other | Recycled Brick

BUILDER Promena Projects

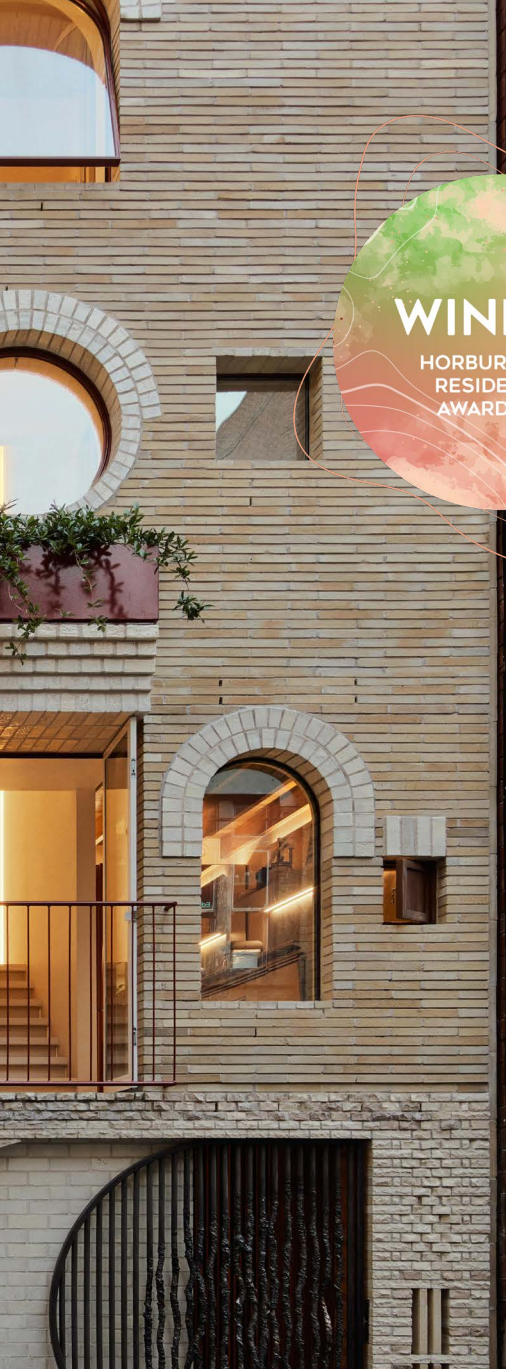


THINK BRICK AWARDS 2023

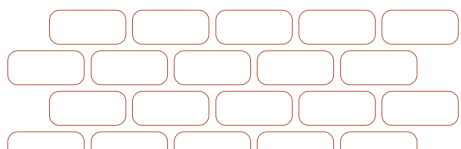
2023 JURY STATEMENT

“With a footprint of just 30m², Waterloo Street is like a little brick jewellery box in the neighbourhood that adds real joy and interest to the street. The creative brickwork ideas on display are both familiar and strange, yet beautifully cohesive. This home, with its geometric openings and façade of recycled and broken bricks, playfully shows how it is possible for private buildings to make positive contributions to public spaces by eliciting a sense of delight in passers-by.”

WINNER

 HORBURY HUNT
 RESIDENTIAL
 AWARD 2023


Photographer: Anson Smart



COLEMAN BAJROVIC RESIDENCE

KLOPPER & DAVIS ARCHITECTS

Brickwork plays a starring role in this welcome addition to a streetscape that is already renowned for its heritage value and character. Built for a couple and their son, the two-storey Coleman Bajrovic Residence features a striking, yet contextually appropriate butterfly roof, which floats over a series of simple brick boxes. These volumes are elevated via the use of bespoke white face bricks, beautifully raked joints and a variety of sill and header course treatments.

Brick has been expertly used externally and internally to blur the boundaries between the dwelling's interior and landscape design. Inside, white brickwork forms a delicate backdrop for the clients' impressive art collection. In contrast, blue bricks were thoughtfully chosen to create a moodier entrance space. A patchwork pattern of white and blue bricks adds a visually appealing and satisfyingly tactile element to the property's entry path.

Intricate details and quality artisanship abound in this project, which was a labour of love and a successful collaboration between the clients, architect and builder.

Photographer: Dion Robeson



HIGH
COMMENDATION

HORBURY HUNT
RESIDENTIAL
AWARD 2023



MANUFACTURER Bowral Bricks

BRICK COLLECTION Bowral50 - Bowral Blue |

Austral Bricks - La Paloma - Castellana

BUILDER Insideout Building

CONTRACTOR Rino Bricklaying

GATHERING HOUSE

INARC ARCHITECTS



Gathering House, as the name suggests, was designed to be a welcoming sanctuary for family and friends to gather. The brief to accommodate lots of people on a regular basis was infused with the challenge of creating warm, inviting spaces that were well-suited to intimate family moments. Providing a flexible floorplan that could expand or contract to suit a myriad of activities was another prerequisite.

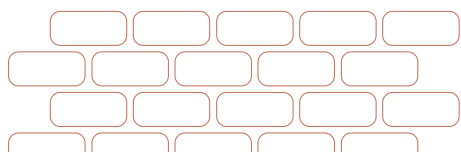
Sharply crafted, triangulated brick piers direct views between rooms and onto the landscape. Curved brick walls soften and accentuate the strong sculptural elements in equal measure.

The brickwork's neutral tones lend a subtle texture and movement to the project. Masonry's timeless quality also forms a symbiotic relationship with the surrounding greenery.

Gathering House will gracefully age thanks to the design philosophy that underpinned the project. Namely, prioritising sustainable planning, natural materials, high-performance products and built-to-last construction methods.

Photographer: Timothy Kaye

MANUFACTURER Krause Bricks
BRICK COLLECTION Grey Brick 50mm - Custom Blend
BUILDER Leone Constructions
CONTRACTOR FVP Constructions



MARY STREET HOUSE EDITION OFFICE

Mary Street House is a reimagining of a well-worn Federation era home. Open to three sides and the northern sun, it needed to overcome design challenges caused by the fact it faces a busy arterial road.

Softly finished recycled brick walls frame the new social spaces of the house, creating a sequence of indoor and outdoor rooms within the boundaries of the property. Brick paving continues the material immersion within the outdoor spaces.

Undulating brick walls form a protective side fence that shelters the home from the busy road's traffic noise.

A pair of enigmatic brick volumes rest atop the planted concrete roof of the new wing. One volume, extending out from the original roof's ridge of terracotta tiles, houses the principal bedroom suite and private courtyard garden; the other holds a small studio.



HIGH
COMMENDATION

HORBURY HUNT
RESIDENTIAL
AWARD 2023



Photographer: Rory Gardiner

MANUFACTURER Krause Bricks

BRICK COLLECTION Standard Brick Range - Ghost

BUILDER Format Group

CONTRACTOR Brick Link

SHAKESPEARE GROVE

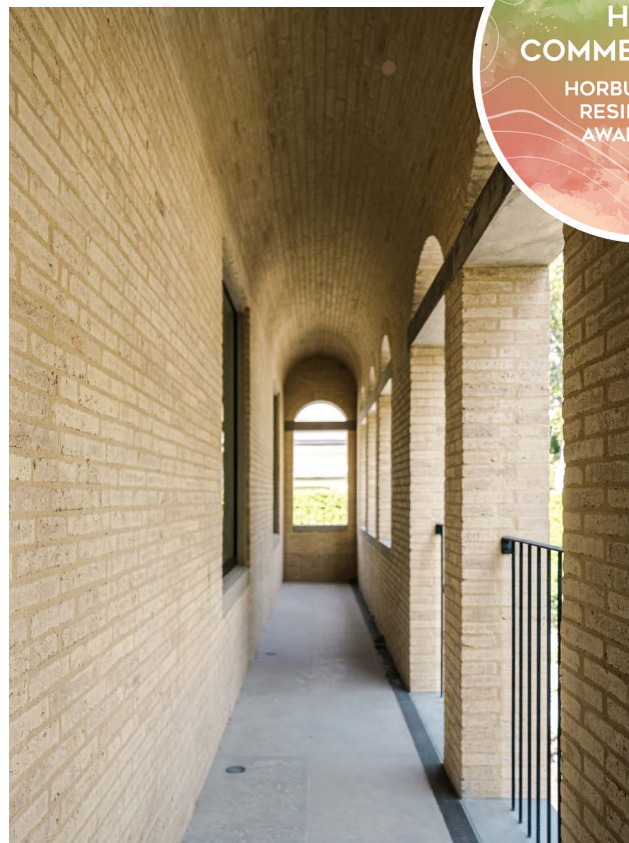
B.E. ARCHITECTURE

Shakespeare Grove is a new house situated within a heritage precinct, thus requiring it to sit comfortably among neighbouring Victorian buildings. That said, it takes its cues from European and Asian mid-century modernists, not its neighbours. It is a house of two disparate sections, unified and strengthened by details and the rigour of material choice.

The bricklaying technique required the mortar to be overlaid and rubbed off when semi-dry with another brick creating a natural grout surface flush with the masonry. The bricks are combined with insitu concrete detailing referencing an older, time-honoured bricklaying tradition. The skill of the tradespeople and consistency of detailing added to the impression that the building had always been there.

Bricks are emphasised as the single defining material of the project. They have been pushed beyond their normal applications in the stepped curve of the façade and the front balcony's arched ceiling. The same bricks are used for the curved seating arrangement in the cabana. These are strong, simple forms with a casual application, but they required intricate mitring and precision techniques to be realised.

Photographer: Victor Vieaux



MANUFACTURER Other
BUILDER Dome Building Projects
CONTRACTOR BM Bricklaying

HORBURY HUNT RESIDENTIAL AWARD ENTRANTS

1. NORTHSIDE HOUSE

WELLARD ARCHITECTS

B: Prolifica Building Co
C: Hawthorn Brick and Block
M: Austral Bricks
P: San Selmo Corso - Potenza (Raw);
SK1N - Potenza

2. SOMERVILLE

COY YIONTIS ARCHITECTS

B: Coy Yiontis Architects
C: Hayden's Bricklaying
M: Krause Bricks
P: Pressed Brick Range - Old Red |
Recycled Brick

3. FITZROY NORTH TERRACE

CLARE COUSINS ARCHITECTS

B: Frank Victoria
C: Metro Brick & Block
M: Recycled Brick

4. KEW HOUSE 2

C. JACK FUGARO

B: Jafer Constructions
C: Concept Masonry
M: Krause Bricks
P: Emperor 380mm - Ghost Grey

5. MANHATTAN ON BELMORE

NADINE K DRAFTING & DESIGN

B: Contractors United
C: Birch Masonry
M: Recycled Brick

6. NEUMANNLOFT

C. ITN ARCHITECTS

B & C: Anderson Homes
M: Recycled Brick

7. NARRABUNDAHAUS

ENVELOPE ARCHITECTURE

B: Walmsley Building Solutions
C: Ryan Collier, Mick Smith and Raw
Landscape Construction
M: Nubrik
P: Pressed Bricks - Chapel Red |
Recycled Brick

8. WELL TEMPERED HOUSE

GREEN SHEEP COLLECTIVE

B & C: Elyte Focus
M: Recycled Brick

9. HYDE PARK HOUSE

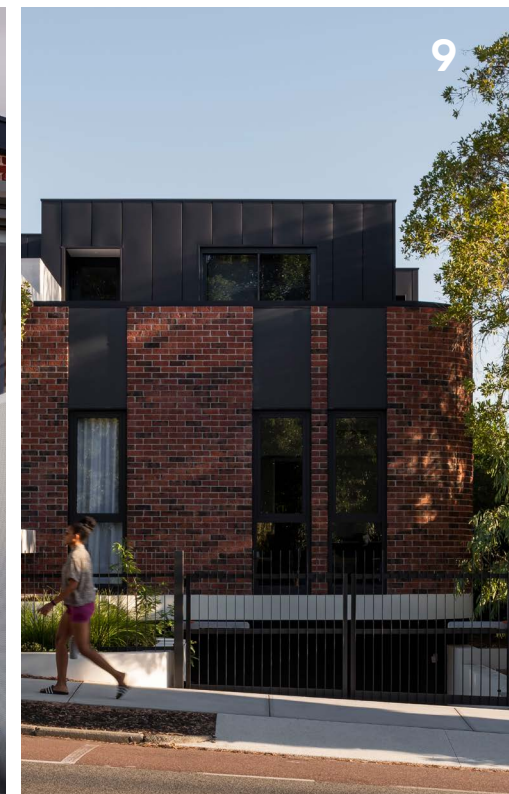
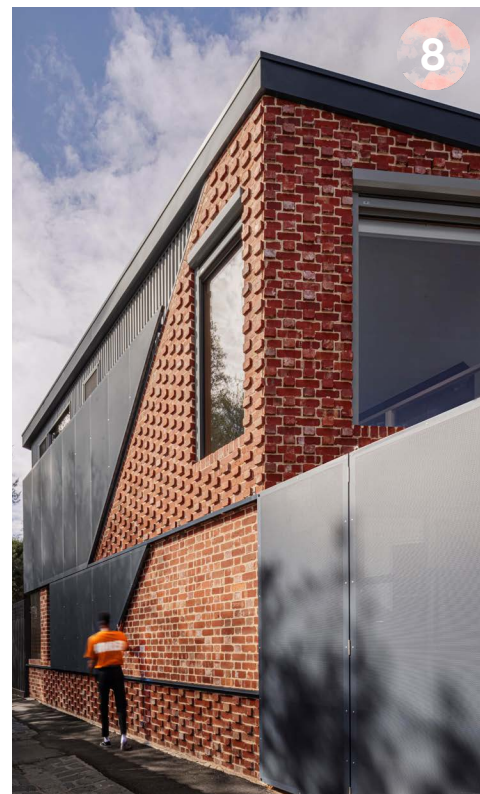
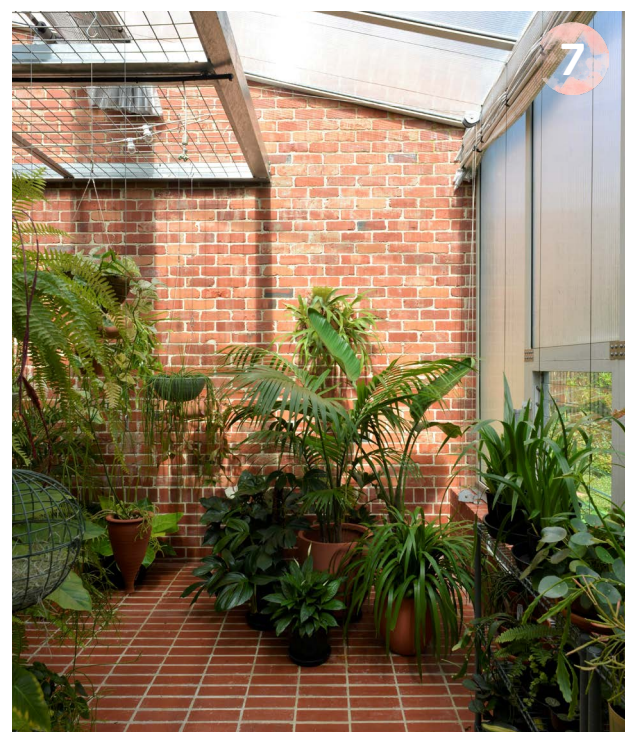
ROBESON ARCHITECTS

B: Formview Building
M: Daniel Robertson
P: Hawthorn - Tan & Red



View all the entries online at thinkbrick.com.au

B = BUILDER / C = CONTRACTOR / M = MANUFACTURER / P = PRODUCT



TOP
40

10



11

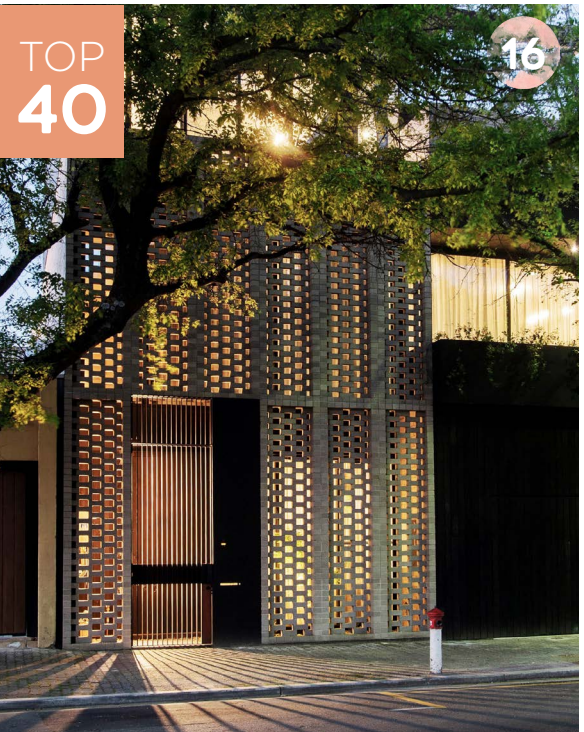


12

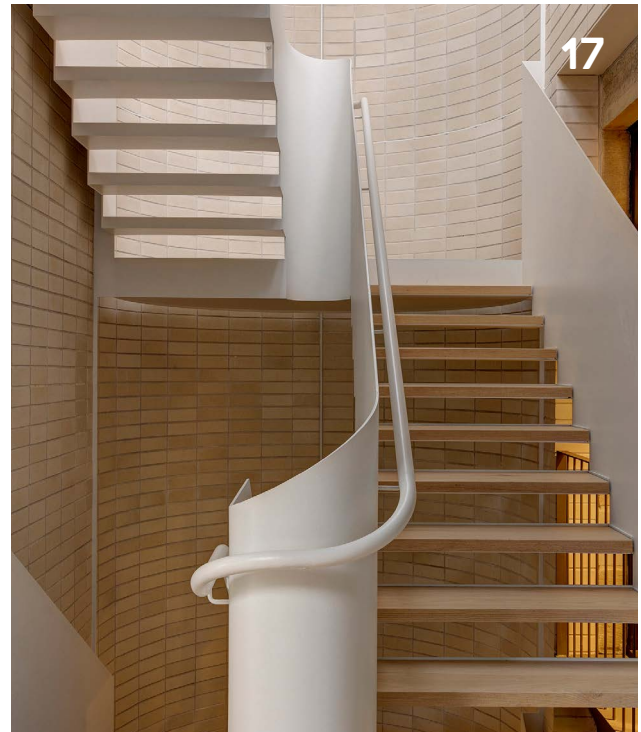


TOP
40

16



17



18



13



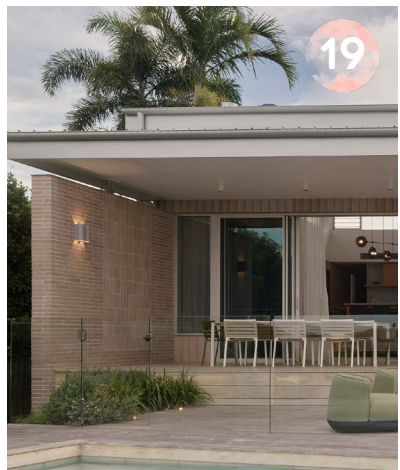
14



15



19



20



21

**10. BRONTE HOUSE****TRIBE STUDIO ARCHITECTS**

B: Robert Plumb Build
 C: BR Masonry
 M: Bowral Bricks
 P: Bowral76 - Chillingham White

11. HOPSCOTCH HOUSE**JOHN ELLWAY. ARCHITECT**

B & C: Robson Constructions
 M: Bowral Bricks
 P: Hamlet Paver - Sepia

12. FREIHAUS**GOCKEL ARCHITECTS**

B: Candour Builders
 C: Banksy Brick and Block
 M: Bowral Bricks
 P: Bowral76 - St Pauls Cream

13. ELEGANT LIVING**ELEGANT LIVING PROJECTS**

C: Elegant Living
 M: Austral Bricks
 P: San Selmo Smoked - Opaque Slate

14. RIVERSDALE KYNETON**JOST ARCHITECTS**

B: CEC Building Construction
 C: Cross Masonry Group
 M: Austral Bricks
 P: Melbourne - Mornington & Yering |
 Recycled Brick

15. EDWARDES STREET RESERVOIR**VIVA BUILD**

B: Viva Build
 C: TBS Bricklaying
 M: Austral Bricks
 P: Industrial - Steel, Alloy & Iron

16. RESIDENCE 264**ENZO CAROSCIO ARCHITECTURE**

B: Active Building developments
 C: Pro-Line Bricklaying
 M: Bowral Bricks
 P: Bowral76 - Simmental Silver

17. WURRUNGWURI**CARTER WILLIAMSON ARCHITECTS**

B: Artechne
 M: Bowral Bricks
 P: Bowral76 - Chillingham White

18. CROWN ST TERRACE**STUDIO ARKIVE**

B: Robert Plumb Build
 C: B R Masonry
 M: Krause Bricks
 P: Emperor 380mm - Ghost

19. BUDERIM HOUSE**ALEXANDRA BUCHANAN ARCHITECTURE**

B & C: Xceed Building Solutions
 M: Bowral Bricks
 P: Bowral300 - Simmental Silver; Bowral76 -
 Simmental Silver

20. AUGUSTA HOUSE**WB HOMES**

B: Daniel Robertson
 C: SMK Bricklaying
 M: Daniel Robertson
 P: Hawthorn - London

21. SURFSIDE HOUSE**ABA - ANDREW BURGESS ARCHITECTS**

B: Robert Plumb Build
 C: BR Masonry
 M: Other

HORBURY HUNT RESIDENTIAL AWARD
ENTRANTS



View all the entries online at thinkbrick.com.au

B = BUILDER / C = CONTRACTOR / M = MANUFACTURER / P = PRODUCT

HORBURY HUNT RESIDENTIAL AWARD ENTRANTS

22. SELBOURNE HOUSE

MP_ARCH

B: Mancini Made
M: Austral Bricks
P: La Paloma - Castellana & Romero

23. O'DONNELL

MHN DESIGN UNION

B: Airth Building
C: Griffin Bricklaying
M: Bowral Bricks
P: Bowral76 - Chillingham White

24. KEW HOUSE 1

JACK FUGARO

B: Jafer Constructions
C: Concept Masonry
M: Krause Bricks
P: Emperor 380mm - Ghost Grey

25. PALOMA HOUSE

SANDY ANGHIE ARCHITECT

B & C: Valmarde Homes
M: Austral Bricks
P: La Paloma - Miro

26. RANKIN PARADE, MAIN BEACH

BDA ARCHITECTURE

B: BM Group
C: Wilkies Brick and Blocklaying
M: Midland Brick
P: Lloyd Wright Brick Collection - Mississippi Cream

27. WG HOUSE

CHT ARCHITECTS

B: Fynnan Constructions
C: PGA Bricklaying
M: PGH Bricks & Pavers
P: Morada - Blanco & Nero

28. HA HA HAUS

FIGR ARCHITECTURE STUDIO

B: BYDE Constructions
C: Masonry Masters Bricklaying
M: Austral Bricks
P: La Paloma - Miro

29. BRICK BUNGALOW

PRESTON LANE

C: By The Bay Corporation
M: Recycled

30. PARKSIDE RESIDENCE

ASHLEY HALLIDAY ARCHITECTS

B & C: Ikon Projects
M: Bowral Bricks
P: Bowral76 - Chillingham White

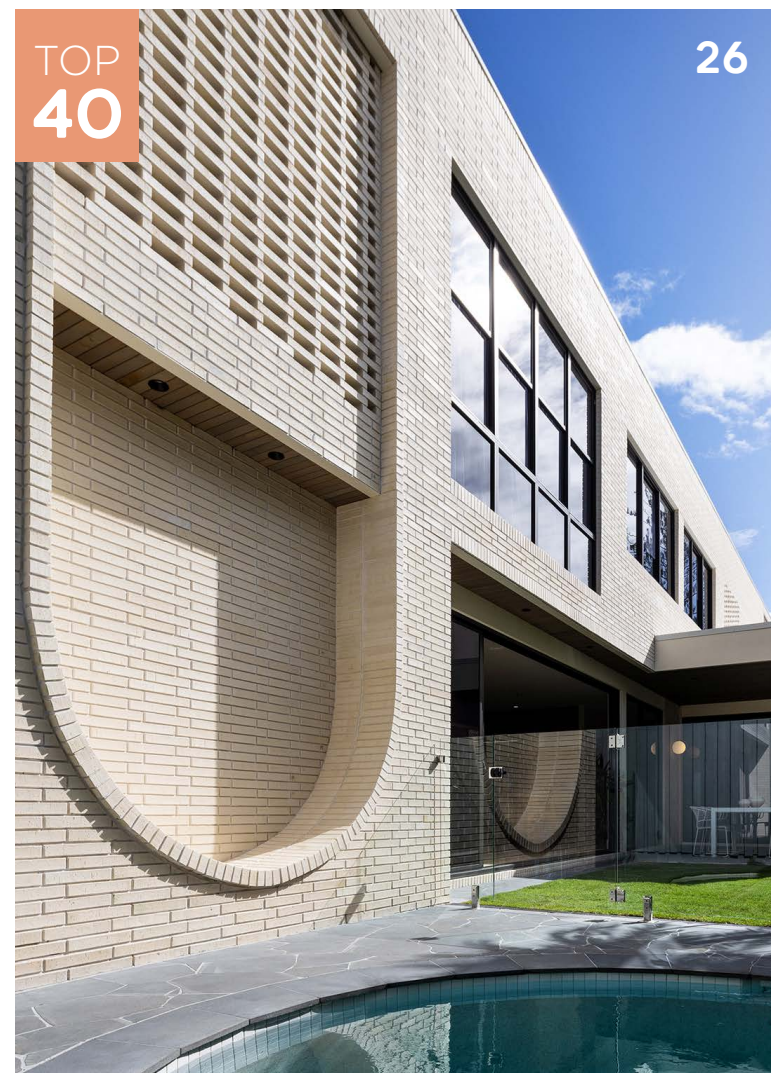
31. RODD POINT TWINS

KREIS GRENNAN ARCHITECTURE

B & C: Home Impact
M: Austral Bricks
P: La Paloma - Castellana



22



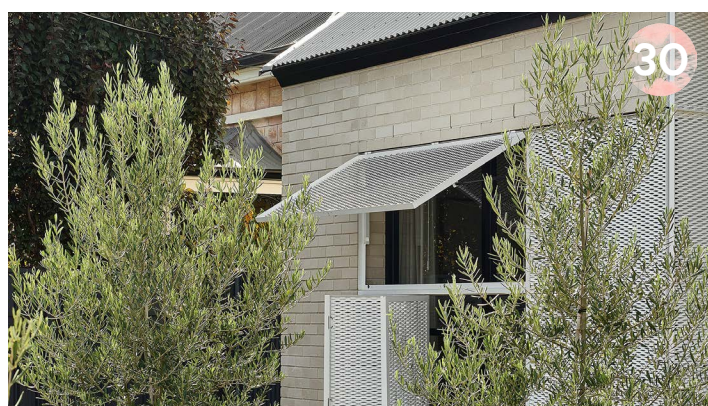
TOP
40

26



View all the entries online at thinkbrick.com.au

B = BUILDER / C = CONTRACTOR / M = MANUFACTURER / P = PRODUCT



KEVIN BORLAND

MASONRY AWARD

THE KEVIN BORLAND MASONRY AWARD RECOGNISES PROJECTS THAT HIGHLIGHT THE DESIGN POTENTIAL OF CONCRETE MASONRY IN COMMERCIAL OR RESIDENTIAL BUILT ARCHITECTURE.

Kevin Borland (1926-2000) was an innovative architect, a generous patron of younger architects and an inspiring and much-loved design studio teacher. After beginning his architectural studies at the University of Melbourne in 1944, Borland deferred to serve in the West Pacific in World War II. On returning, he completed his studies and graduated with a Bachelor of Architecture in 1950.

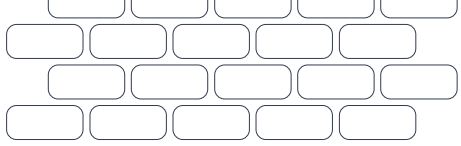
After working at Mockridge Stahle & Mitchell's office, Borland, together with friends Peter McIntyre and John and Phyllis Murphy, won the national competition to design the Melbourne swimming and diving stadium for the 1956 Summer Olympics.

Together with his former student and friend, Daryl Jackson, Borland completed the design and construction of the distinguished brutalist Harold Holt Memorial Swimming Centre in Melbourne's Glen Iris in 1968-1969.

During a time when peer awards were far less common than they are today, Borland's designs received numerous awards from state chapters of the Royal Australian Institute of Architects. His work made a significant contribution to the trajectory of Melbourne architecture.

Photographer: Tatjana Plitt





The Concrete Masonry Association of Australia (CMAA) is the peak body that represents the concrete masonry manufacturers of Australia. This includes bricks, blocks, pavers and retaining walls.

The CMAA supports the concrete masonry industry by providing technical information and advice to architects, engineers, specifiers and educators. The CMAA publishes technical manuals, data sheets and software packages relating to concrete block walling, concrete paving, permeable paving and concrete masonry retaining walls, which are free to download from the CMAA website.

CMAA also conducts workshop courses and provides a technical advisory service for masonry design queries.



UOQ CRICKET CLUB MAINTENANCE SHED

LINEBURG WANG

STEVE HUNT ARCHITECT

The University of Queensland Cricket Club Maintenance Shed champions uncommon approaches to common building materials. It is a celebration of cost efficiencies in an exploration of the standard grey block - an outcome driven by construction pricing and material supply constraints in 2020-21.

As the cost of steel increased during the design process, core-filled blockwork piers replaced structural steel posts and enabled the reimagining of a typical breeze block screen.

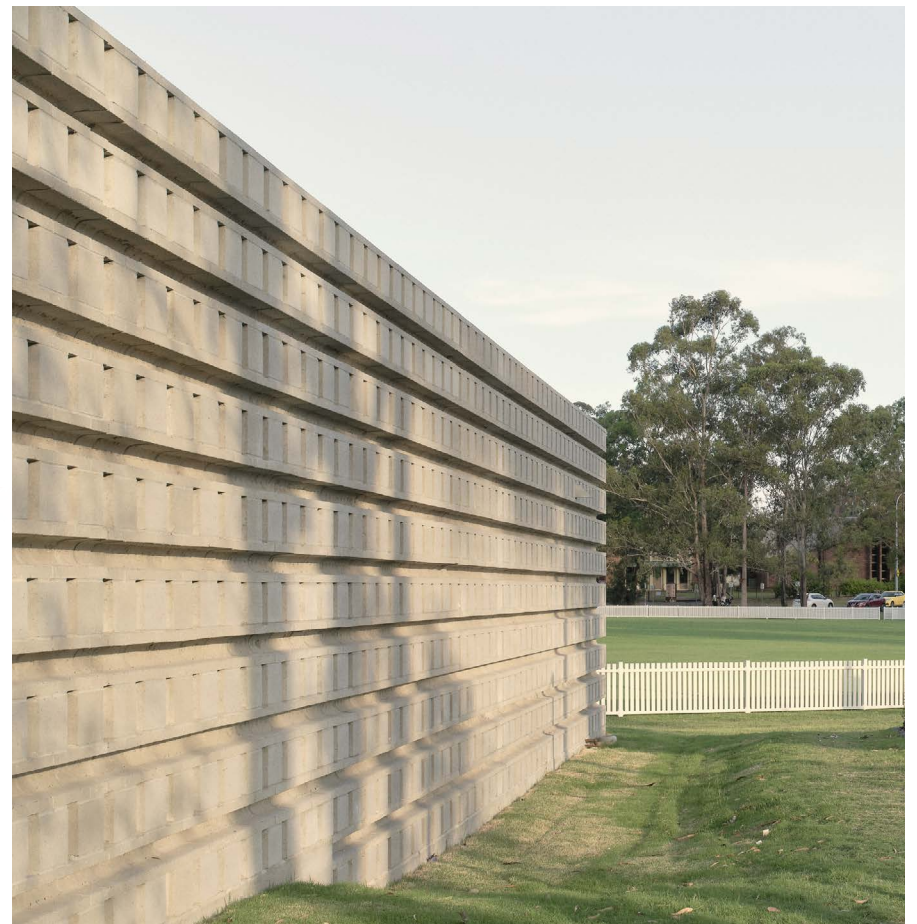
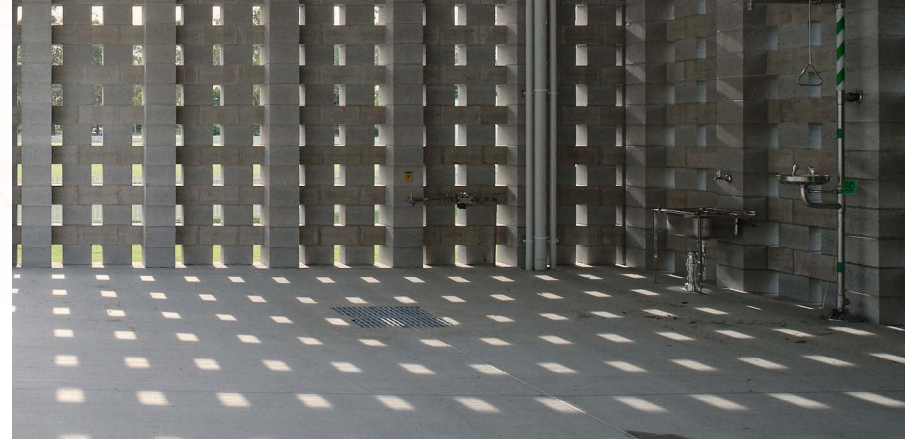
The shed breathes thanks to a mass of blockwork that appears as filigree. The building is reductive - without glass or internal lining. It highlights how structure and ornamentation can be one in the same.

MANUFACTURER National Masonry

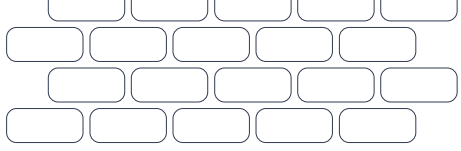
MASONRY COLLECTION Other - Standard Grey Block

BUILDER Xenia Constructions

CONTRACTOR Armstrong Bricklaying



Photographer: David Chatfield

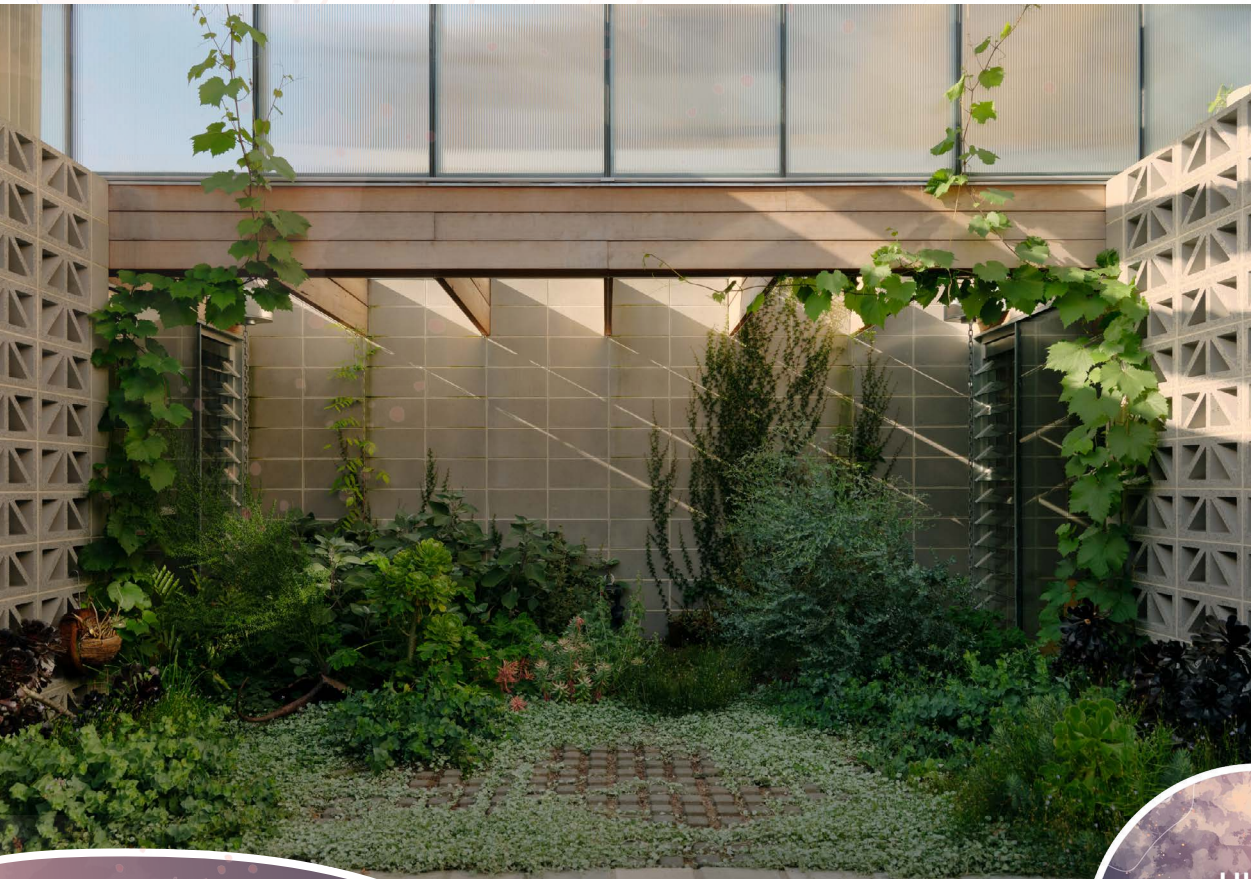


2023 JURY STATEMENT

“UOQ Cricket Club Shed takes the use of blocks somewhere new. Installing blocks as a screen is an incredibly inventive way of putting a building together. Super creative masonry has been used structurally and functionally, as well as expressively. The way the shed rises out of the landscape is fantastic. This relatively small project is quite provocative and very singular in its vision.”

WINNER
KEVIN BORLAND
MASONRY AWARD
2023





Sunday is a small home with a big “wow” factor. The innovative use of masonry ensures occupants can always find a place of comfort. Given the small size of the site, concerns of ‘separation’ and ‘connection’ are key.

Breeze block walls demarcate the various zones of the house, while enabling natural light, quality airflow and glimpse views to enliven all the living areas.

Materially, natural textures have been brought to the fore, with minimal surface treatments allowing the house to develop its own patina with time.



HIGH
COMMENDATION

KEVIN BORLAND
MASONRY AWARD
2023

Photographer: Tom Ross

MANUFACTURER Austral Masonry

MASONRY COLLECTION Breeze Blocks - Wedge Nickel;

Grey Block - Smooth Grey | GB Masonry - GB Smooth - Smooth Nickel

BUILDER Grenville Architectural Construction

CONTRACTOR Rendina Bricklaying

GARDEN TOWER HOUSE

STUDIO BRIGHT

The resurrection of a dilapidated Victorian weatherboard sits within the dense urban fabric of Cremorne, where huge developments tower over original workers' cottages. Within this context sits a new contribution to the local landscape – two petite breeze block towers on a tight four-metre-wide site.

Garden Tower House has a singular, all-encompassing outer skin of custom-coloured breeze block. The humble breeze block, ubiquitous in postwar Australia, gets star billing here.

Issues of natural lighting, view outlook and privacy (aggravated by site constraints) are mediated by the breeze blocks. From inside, sunlight filters in and outward views are glimpsed through the myriad holes of the block pattern.

The breeze block skin doubles as a frame. It will eventually be overtaken by climbing leafiness that links the gardens across all levels.

Precision was paramount. Every millimetre had to work hard to realise programmatic potential and every wall surface needed to contribute to supporting family life.

HIGH
COMMENDATION

KEVIN BORLAND
MASONRY AWARD
2023

Photographer: Rory Gardiner

MANUFACTURER Other
BUILDER Frank Victoria
CONTRACTOR Metro Brick & Block

DEEPWATER HOUSE

AHA STUDIO

Photographer: Robert Frith Acorn

Deepwater House is a new type of residence for progressive thinking clients. Indonesian modernism meets Perth regionalism in this environmentally and socially responsive home.

The long floor plan is stretched thin over a single undulating level with vast garden spaces designed as urban parkland. A respect for the climactic conditions and sense of space is embedded in the architecture and landscape design.

Local block laying artisans were sought to provide the materiality to the architecture.

The house achieves a NatHERS Energy Rating of 7.1 Stars and uses orientation and passive solar design principles to aid in the low lifecycle cost functioning of the home. The plan employs a thermal mass heat sink wall of solid concrete blocks to the southern side, with extensive use of custom detailed solid and breeze blocks walls to the east, north and western ends.



HIGH
COMMENDATION

KEVIN BORLAND
MASONRY AWARD
2023

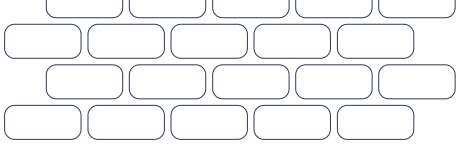
MANUFACTURER Midland Brick

MASONRY COLLECTION Masonry Blocks - 100mm

Wide Series 10.01 & 200mm Wide Series 20.01

BUILDER Wandoo Building Company

CONTRACTOR R&M Ransome Bricklaying



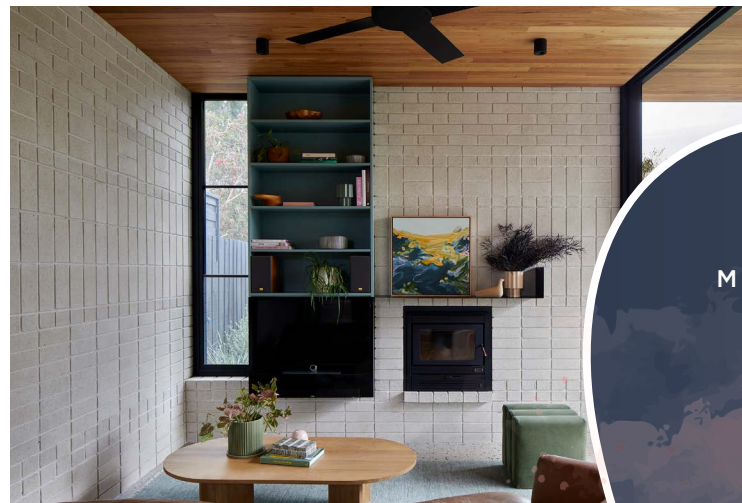
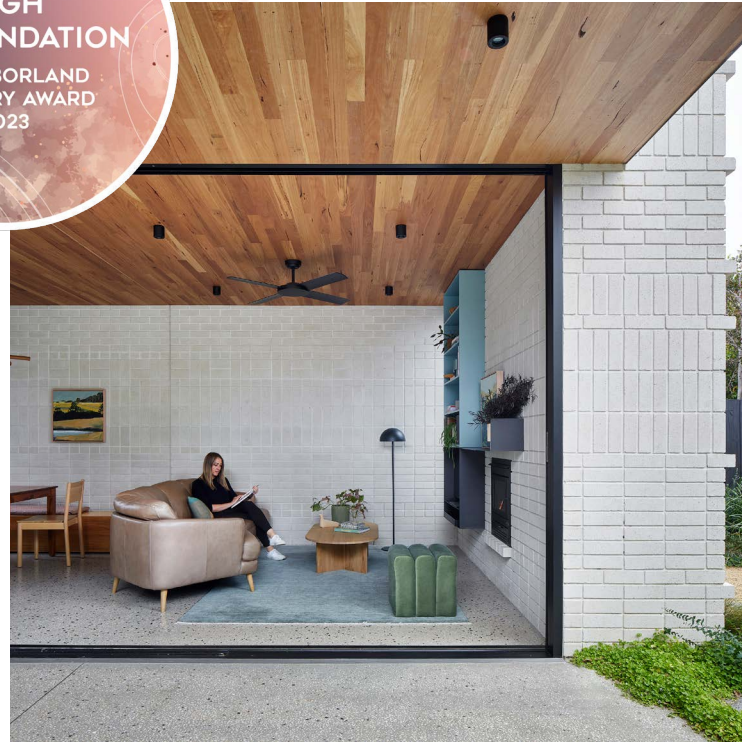
WEATHER HOUSE MIHALY SLOCOMBE

**HIGH
COMMENDATION**
KEVIN BORLAND
MASONRY AWARD
2023

Photographer: Tatjana Plitt

Concrete brickwork is the hero of Weather House - a bespoke home for a young, nature-loving family on a compact block. The clients cherished the character of their century-old worker's cottage, but sought more considered space, flexibility and outdoor connection.

As you move through the home, the tactility of the extension emerges. In particular, the concrete brick of the walls. Though an inherently neutral material, they are distinguished by a brick pattern that ascends towards the ceiling in intriguing bands, naturally drawing the eye upward. Employed across the extension's internal and external walls, the concrete brick formation offers a refreshed take on the classic white wall - delivering a timelessness and uniqueness in one enduring package.



MANUFACTURER Adbri Masonry
MASONRY COLLECTION Architectural Masonry -
Architectural Brick
BUILDER Sargant Construction
CONTRACTOR AH Brick and Block

KEVIN BORLAND MASONRY AWARD ENTRANTS

1. BLUE MOUNTAINS HOUSE

ANTHONY GILL ARCHITECTS

B: Robert Plumb Build
C: BR Masonry
M: GB Masonry
P: GB Smooth - Nickel

2. TRILOGY HOUSE

PETER STUTCHBURY ARCHITECTURE

B & C: ANL Constructions
M: Austral Masonry
P: Australite - Smooth Grey

3. LORD RESERVE

JMA ARCHITECTS

M: Adbri Masonry
P: Architectural Masonry - Architectural Brick

4. WINGS WAY

MRTN ARCHITECTS

B: Great Ocean Road Builders
C: Brett Smart
M: GB Masonry
P: GB Smooth - Nickel; GB Honed - Nickel

5. LONG REEF SURF LIFE SAVING CLUB

ADRIANO PUPILLI ARCHITECTS

B: Grindley Interiors
C: Paragon Masonry
M: GB Masonry
P: GB Honed - Porcelain | Austral Masonry - Breeze Blocks Wedge - Porcelain

6. REID OVAL REDEVELOPMENT

BRAND ARCHITECTS

B: Fairbrother
C: Xavier McInerney Bricklaying
M: Adbri Masonry
P: Architectural Masonry - Designer Masonry Honed

7. TREE ISLAND

CARTER WILLIAMSON ARCHITECTS

B: SQ Projects
C: BH Bricklaying & Landscaping
M: GB Masonry
P: GB Smooth - Smooth Nickel & Smooth Pewter

8. WEST MELBOURNE RESIDENCE

ARCHITECTS FOR HIRE

B: SK4 Building
C: Melbourne Brick and Block Layers
M: National Masonry
P: Designer Block Range - Honed Face Pearl Grey

9. THE BAILEY

DAHA

B: Rawcorp Construction
C: White and Ellaby Bricklaying
M: National Masonry
P: ULTRA BRICK - Smooth Face Glacier & Smooth Face Charcoal

10. THE GOLD TOWER OFFICE

CAMERON & CO ARCHITECTURE

B: Schiavello Construction
C: Josh Hill
M: Austral Masonry
P: Vertico Split Face - Porcelain | GB Masonry - GB Honed - Porcelain; GB Smooth - Porcelain

11. WREN HOUSE

WOLVERIDGE ARCHITECTS

B: Wren House
C: Ongarello
M: Austral Masonry
P: Grey Block - Smooth Grey | GB Masonry - GB Honed - Porcelain

12. MAURER RESIDENCE

PAUL UHLMANN ARCHITECTS

B: Sanctuary 28 Projects
C: Gold Coast Bricklaying
M: National Masonry
P: Designer Block Range - Shot-Blast Face Charcoal



1



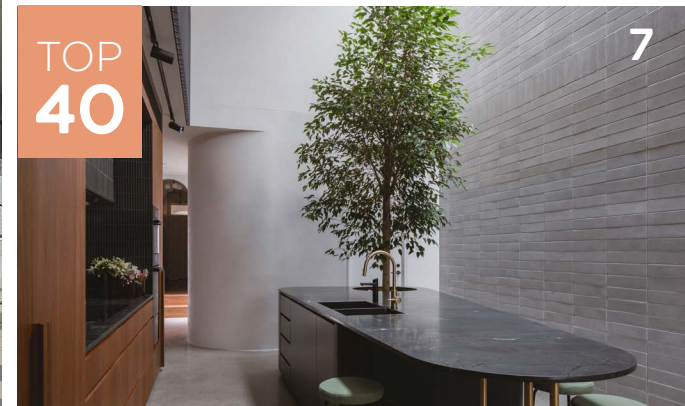
2



3



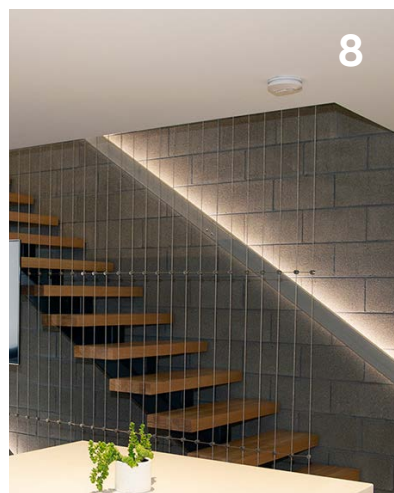
6



7



9

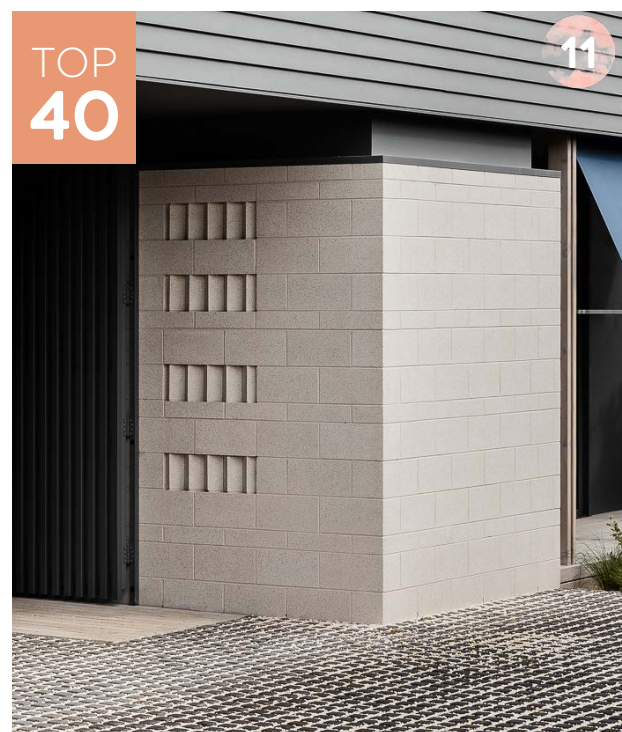
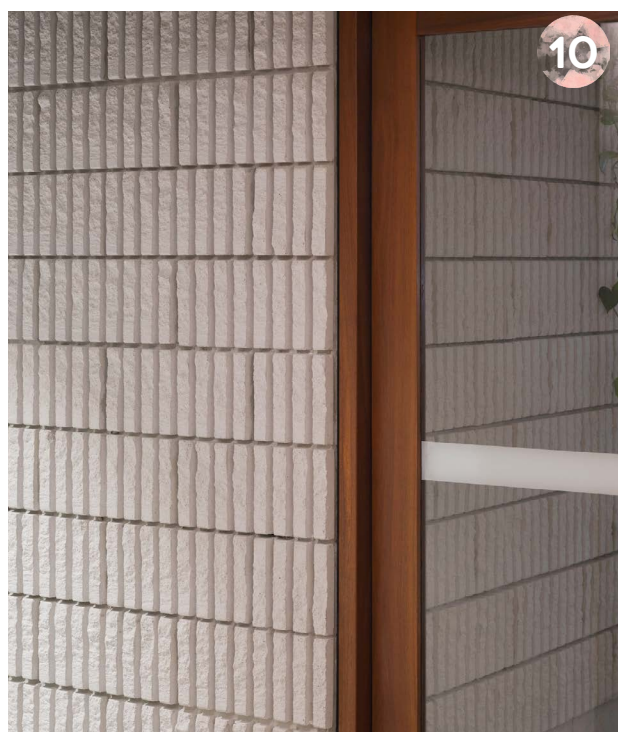


8

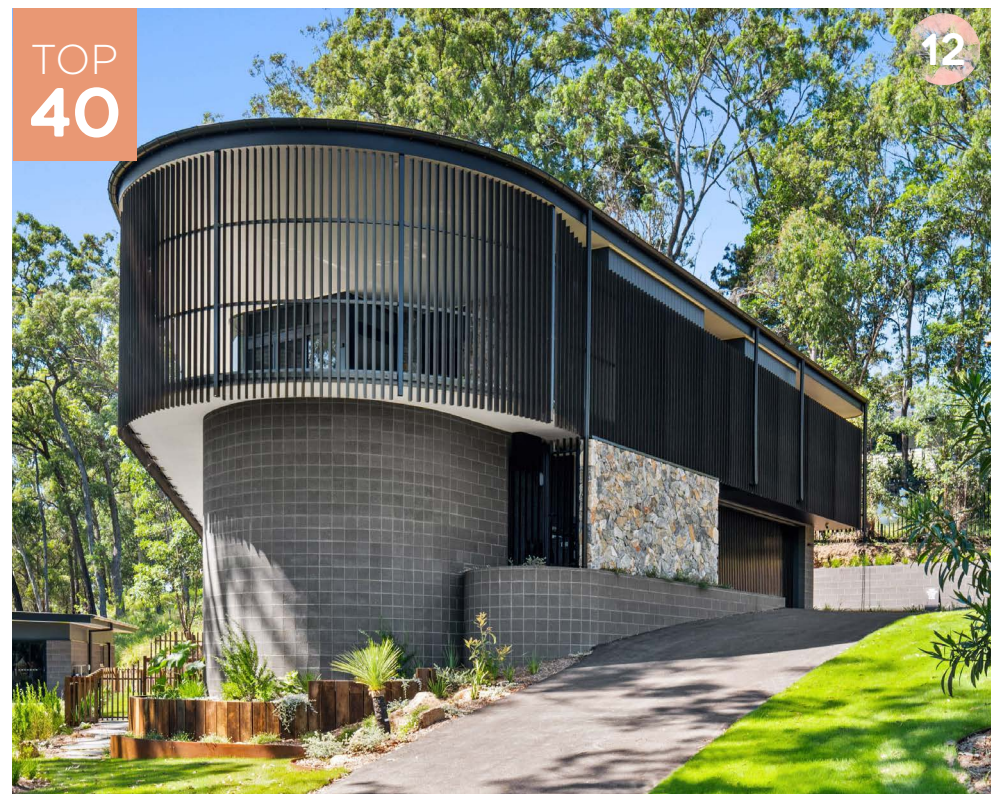


View all the entries online at thinkbrick.com.au

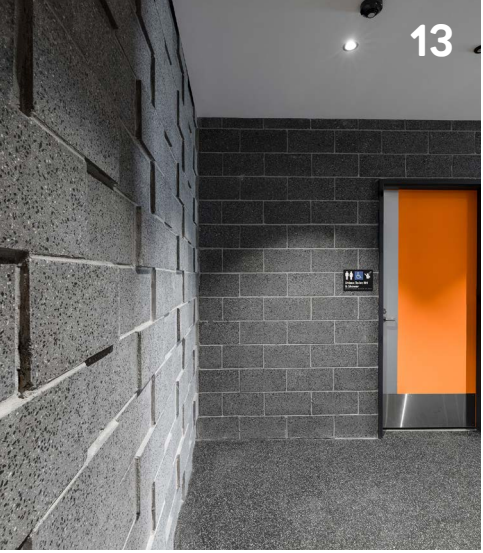
B = BUILDER / C = CONTRACTOR / M = MANUFACTURER / P = PRODUCT



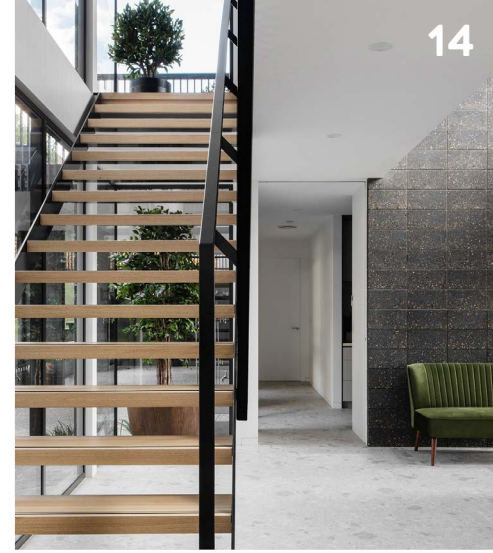
TOP
40



TOP
40



13



14



15



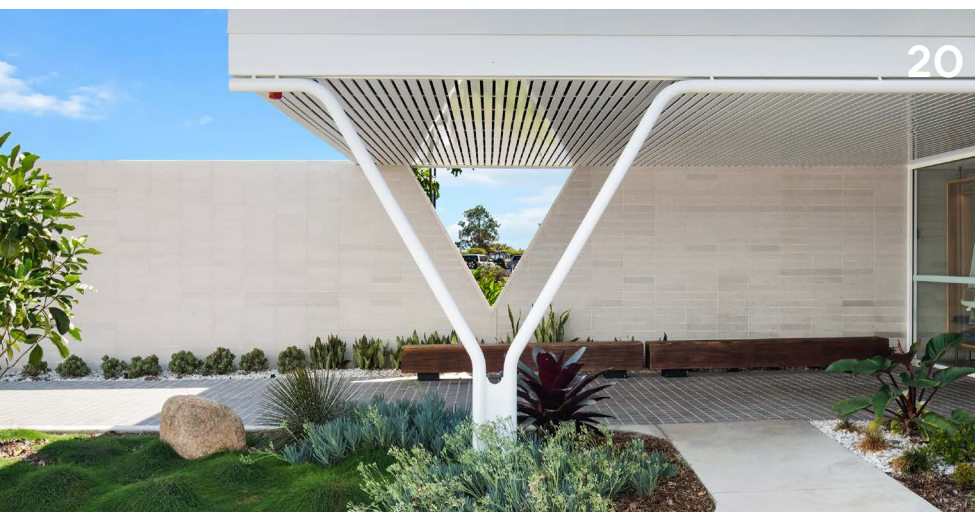
16



18



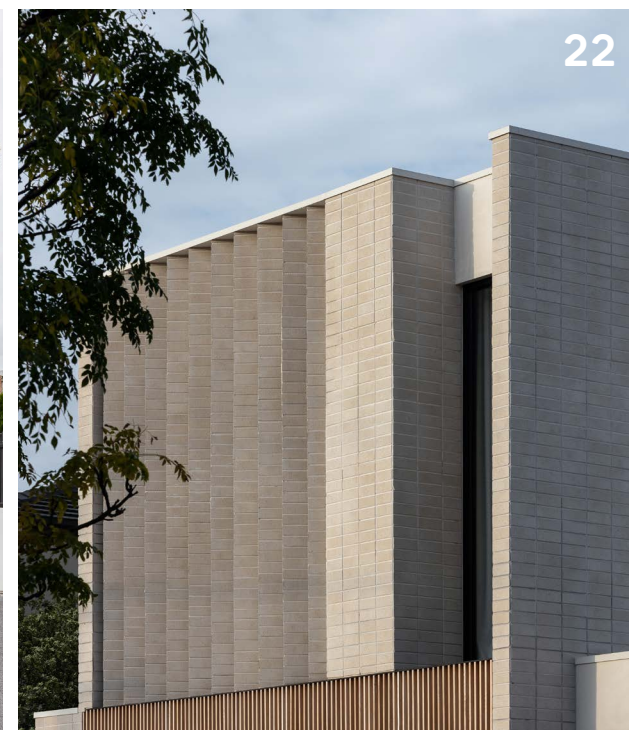
19



20



21



22

17

**13. ERIC TWEEDALE STADIUM****DWP AUSTRALIA**

B: Belmadar
 C: All About Masonry
 M: National Masonry
 P: Designer Block Range - Polished Face - Charcoal

14. ARAM PLACE**HONED ARCHITECTURE + DESIGN**

B: 3D Construction
 C: G&SL Vandervelde
 M: Adbri Masonry
 P: Architectural Masonry - Designer Masonry Shotblast

15. CHILLER HOUSE**COX ARCHITECTURE**

B: Badge Constructions
 C: Brisbane Brick and Block
 M: National Masonry
 P: Designer Block Range - Honed Face Glacier & Smooth Face Charcoal

16. HOMES VICTORIA**HAYBALL**

B: Built
 M: Adbri Masonry
 P: Architectural Masonry - Blended Brick Series & Coloured Face Brick

17. KAWANA WATERS COLLEGE LEARNING CENTRE**ARKLAB ARCHITECTURE**

B: Bryant Building Contractors
 C: DNL Building Services
 M: GB Masonry
 P: GB Honed - Porcelain | Austral Masonry - Breeze Blocks Wedge - Porcelain

18. BOX HILL NORTH PRIMARY SCHOOL**SIBLING ARCHITECTURE**

B: Simbuilt
 C: S&KB Bricklaying
 M: Adbri Masonry
 P: Architectural Masonry - Architectural Brick

19. HENRY REED COURT**HONED ARCHITECTURE + DESIGN**

B: Batten Horne Construction
 C: G&SL Vandervelde
 M: Adbri Masonry
 P: Architectural Masonry - Designer Masonry Shotblast

20. MANLY HARBOUR BOAT CLUB**KP ARCHITECTS**

B: Ashley Cooper Construction
 C: BT Masonry
 M: National Masonry
 P: Designer Block Range - Honed Face Glacier; ULTRA BRICK - Smooth Face Frost

21. ALBERO**URBAN CREATIVE STUDIO**

B: North Star Projects
 C: DMT Bricklaying
 M: Adbri Masonry
 P: Architectural Masonry - Ivory Brick (Honed)

22. CAULFIELD PILLAR HOUSE**TECTURE ARCHITECTURE AND INTERIOR DESIGN**

B: Joluca Design
 M: Adbri Masonry
 P: Architectural Masonry - Coloured Face Brick - Smooth Ivory

23. IVY LANE**HONED ARCHITECTURE + DESIGN**

B: Cowan Construction
 C: Burridge Bricklaying
 M: Adbri Masonry
 P: Architectural Masonry - Designer Masonry Shotblast

24. KALKALLO COMMUNITY CENTRE**CANVAS PROJECTS**

B: Melbcon
 C: Spiden Bricklaying
 M: Adbri Masonry
 P: Architectural Masonry - Architectural Brick

23



24



KEVIN BORLAND MASONRY AWARD
 ENTRANTS

NEW
 ENTRANT
 2023

View all the entries online at thinkbrick.com.au

B = BUILDER / C = CONTRACTOR / M = MANUFACTURER / P = PRODUCT

ROBIN DODS ROOF TILE EXCELLENCE AWARD

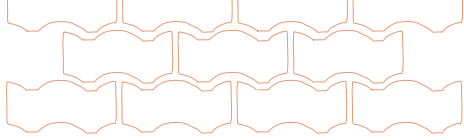
SINCE THE INTRODUCTION OF THE ROOF TILE EXCELLENCE CATEGORY INTO THE AWARDS IN 2014, THE RESPONSE HAS BEEN EXCEPTIONALLY POSITIVE.

Many worthy past winners have pushed the envelope in innovative roof design using terracotta and concrete roof tiles in their residential or commercial building projects.

To further showcase the sustainability benefits, versatility and design possibilities of terracotta roof tiles, a new award category was introduced in 2016, named after renowned architect Robin S. Dods (1868–1920). Robin Dods believed in sustainable design to suit the climate, especially in roofing. His distinctive style of gabled roofs for domestic dwellings, which combined passive solar design while allowing for ventilation and insulation, became prevalent throughout Queensland in the early 1900s.

Photographer: Tom Roe





The Australian Roofing Tile Association (ARTA) strives to promote stylistic, sustainable roofing solutions that Australians nationwide can be proud of.

ARTA's mission is to deliver the next generation in innovation and sponsor new artforms. It seeks to inspire through the power of natural, Australian products to generate homes that are infinitely more desirable, valuable and liveable.

ARTA stands behind roof tiles not just for their design potential, but for their commitment to impeccable quality, safety and protection. From their long-lifespans to eco-friendly manufacture, roof tiles offer numerous features and benefits that are invaluable to any enterprising homeowner.

ARTA's growing commitment to promote the roofing tile industry sees it provide apprenticeship opportunities for prospective tilers and convey issues on health and safety to both consumers and our members.

BONDI PAVILION CONSERVATION AND RESTORATION PROJECT

TONKIN ZULAIKHA GREER
ARCHITECTS

Bondi Pavilion is a multi-purpose community hub as well as a world-famous heritage landmark. Its tired, shabby spaces have been conserved and upgraded, with structural failures rectified and new, colonnaded courtyards opened to the public.

The most visible transformation is the reconstruction of the original multi-coloured cordova-tiled roof in place of a 1960s grey concrete incarnation. Returning to the Bondi Pavilion's design roots has lifted the building's image, restored its symmetrical, colonnaded elevation and given it a vibrant, new functionality.

Precast concrete columns define the colonnades around the revived courtyards and the cracking brickwork has been stitched together with thousands of stainless-steel helical ties.



Photographer: Brett Boardman

MANUFACTURER Bristle Roofing

TILE COLLECTION Terracotta Roof Tiles - La Escandella Curvado
- Azul, Bottle, Carmine, Cobalt, Conac, Honey, Olive, Roja & White

BUILDER Buildcorp Interiors

CONTRACTOR Combined Roofing Australia

2023 JURY STATEMENT

“Multi-coloured roof tiles are the hero in this historic restoration of the iconic Bondi Pavilion. The new roofing materials have been expertly applied to re-interpret the building’s heritage and celebrate Australia’s beach culture. Painstakingly reconstructing the Pavilion’s original, ocean-hued roof elevates it to something textural and reinvigorates the whole building. Its tiles will be there in a hundred years from now, other products won’t be. After an unsympathetic renovation in the 1960s, people no longer noticed the roof, now it’s “the thing.”

WINNERROBIN DODS ROOF
TILE EXCELLENCE
AWARD 2023

50

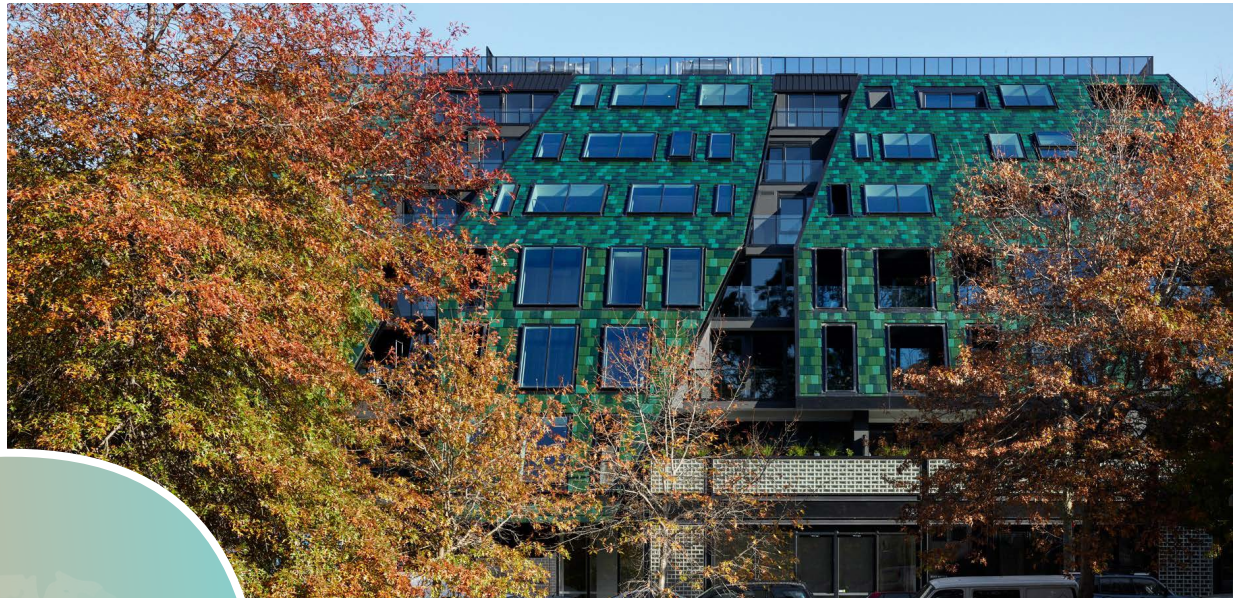
VIRIDI
PLUS ARCHITECTURE
TLG ROOFING

Embracing the contours of its landscape, Viridi appears to gracefully emerge from its surroundings. Contributing a dynamic visual landmark to the site, the mosaic-like tessellation of thousands of tiles glint and ripple across the crafted façade.

Roof tiles were chosen for their look, weight, longevity and sustainability advantages. The installation site was an eight-storey building, including an underground garage. Being a one-of-a-kind roof tiling project, it was classed as a façade and required different installation methods and materials to complete and comply with the façade engineers' requirements.

**HIGH
COMMENDATION**
ROBIN DODS ROOF
TILE EXCELLENCE
AWARD 2023

Photographer: Tom Roe



MANUFACTURER Other
BUILDER Cobild
CONTRACTOR TLG Roofing

THINK BRICK AWARDS 2023

ST PATRICKS COLLEGE BALLARAT RESIDENCE BALLARAT BRICKS & ROOFING

This magnificent period building, built at the turn of the century, is located on the main street of Ballarat, where it is surrounded by Ballarat's major colleges and hospitals.

With its prestigious address, the building needed its existing roof replaced to restore it to its former glory.

Terracotta tiles were carefully chosen to provide the best match to the existing tiles. The original finials and decorative ridge tiles were retained and reused.

The level of detail in the re-roof project required the services of highly skilled roofers, whose artisanship exceeded all expectations of the client and builder.

This roof restoration has breathed fresh life into one of Ballarat's iconic buildings.

HIGH COMMENDATION

ROBIN DODS ROOF
TILE EXCELLENCE
AWARD 2023

MANUFACTURER Other

BUILDER Programmed

CONTRACTOR Ballarat Bricks & Roofing & 2D Roofing

5 2

AVONDALE AETA STUDIO

Avondale is a 1970s heritage-listed townhouse complex. With the original tiles at the end of their life and the stock of spares exhausted, the owners elected to embark on a roof replacement project.

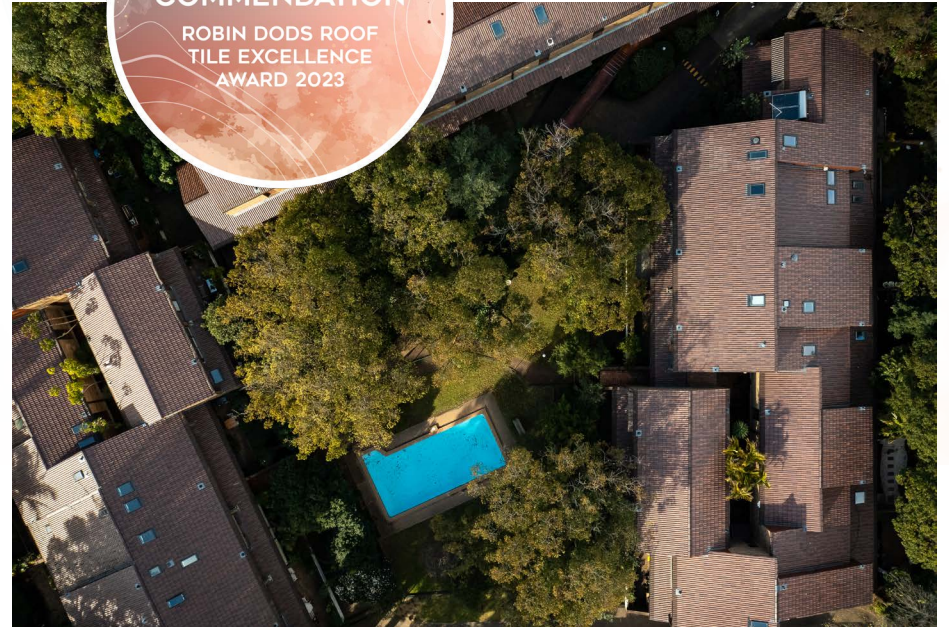
As a heritage-listed building, it was important to retain as much of the original design intent as possible. Designed by the late architect Ian McKay, who was an exceptional proponent of the classic 'Sydney School' approach to architecture, Avondale's material palette exemplifies a significant period in the history of Australia's built environment.

The roof, with its wide overhangs and staggered high-pitched planes, was such a prominent feature; the designers needed to find a replacement tile that would match the character of the original. The few remaining spare tiles had an interesting texture with a variegated glaze. Contemporary tiles tend to emphasise flat colours which favour uniformity rather than texture – running contrary to the original intention. A newly released bronze roof tile was eventually selected. This product blended perfectly with the existing design intent and material palette.

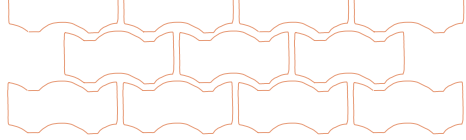
MANUFACTURER Bristle Roofing
TILE COLLECTION Concrete Roof Tiles - Designer Bronze
BUILDER Boden Builders
CONTRACTOR Dreamroof

HIGH
COMMENDATION
ROBIN DODS ROOF
TILE EXCELLENCE
AWARD 2023

Photographer: Alexander Mayes



THINK BRICK AWARDS 2023



CLAY HIP AND VALLEY APT ROOFING

The roof on this multi-residential, beachside property had sustained damage from years of exposure to salt water and high winds, and needed replacement to ensure the safety and comfort of the residents.

This project involved the removal of the old roof, inspection of its underlying structure and installation of a new, durable solution that could withstand the harsh coastal environment. The design team worked closely with the strata to select the appropriate materials to ensure the replacement roof was functional and aesthetically pleasing. A classic red terracotta tile was chosen. The entire build was completed in a timely and efficient manner, with a focus on minimising disruption to the homeowners and their neighbours.



**HIGH
COMMENDATION**

ROBIN DODS ROOF
TILE EXCELLENCE
AWARD 2023



MANUFACTURER LUTUM Roofing
TILE COLLECTION French - Sydney Red
BUILDER APT Roofing
CONTRACTOR APT Roofing

ROBIN DOD ROOF TILE EXCELLENCE AWARD ENTRANTS

1. BELLEVUE HILL

ALPHA ROOFING

B & C: Alpha Roofing
M: LUTUM Roofing
P: Shingle - Eclipse

2. AUSTINMER

ALPHA ROOFING

B & C: Alpha Roofing
M: LUTUM Roofing
P: Shingle - Eclipse Matte

3. WOONONA PROJECT

ALPHA ROOFING

B & C: Alpha Roofing
M: LUTUM Roofing
P: Shingle - Slate Satin

4. KEILOR HAMPTONS RESIDENCE

DESIGN PLUS ARCHITECTURAL DRAFTING

B: Pulitano Constructions
C: J K Roof Tiling
M: Bristile Roofing
P: Terracotta Roof Tiles (La Escandella) -
Planum Slate

5. NARRE WARREN NORTH FOREVER HOME

AUSTRALIAN DRAFTING SERVICES

B: Frank Teofilo
C: No Limit Roofing
M: Bristile Roofing
P: Terracotta Roof Tiles (La Escandella) -
Vienna Caviar

6. FEDERATION

APT ROOFING

B & C: APT Roofing
M: LUTUM Roofing
P: French - Federation Mist Glaze

7. JUDD MANOR

FARADAY HOMES

B & C: Faraday Homes
M: LUTUM Roofing
P: French - Sydney Red

8. ECLIPSE HOUSE

ALPHA ROOFING

B & C: Alpha Roofing
M: LUTUM Roofing
P: French - Slate Gloss

9. TETRIS

ALPHA ROOFING

B & C: Alpha Roofing
M: LUTUM Roofing
P: French - Slate Gloss

10. WOLLERT DISPLAY

GARY MCFARLANE & ASSOCIATES

B: Lentini Homes
C: Gembrook Roofing
M: Bristile Roofing
P: Terracotta Roof Tiles (La Escandella) -
Planum Wallaroo

11. SLATE CLAY

ALPHA ROOFING

B & C: Alpha Roofing
M: LUTUM Roofing
P: French - Slate Gloss

12. SYMMETRIC

ALPHA ROOFING

B & C: Alpha Roofing
M: LUTUM Roofing
P: Macquarie - Custom Ochre

13. OCHRE SLIDE

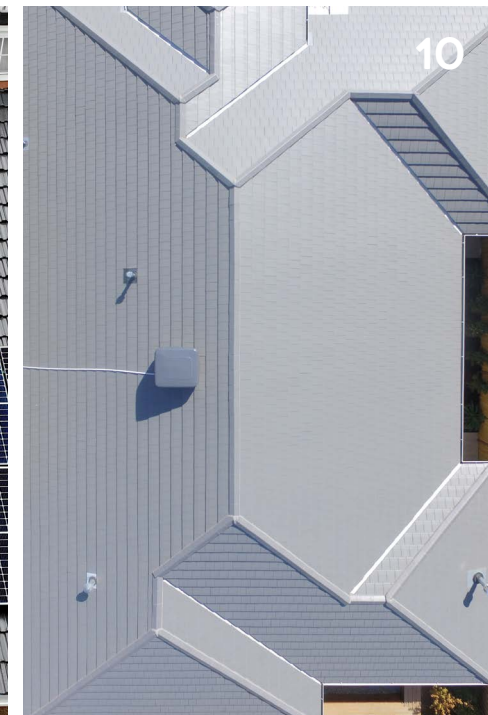
ALPHA ROOFING

B & C: Alpha Roofing
M: LUTUM Roofing
P: Macquarie - Ochre

14. LAVENDER BAY

HECTOR ABRAHAMS ARCHITECTS

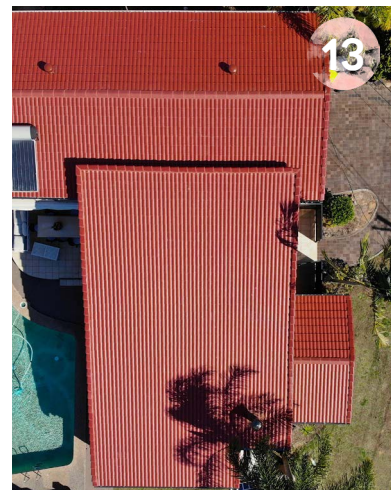
C: Dreamroof
M: Bristile Roofing
P: Terracotta Roof tiles (La Escandella) -
Curvado Bourgogne, Curvado Jaspee Roja
& Curvado Marron



NEW
ENTRANT
2023

View all the entries online at thinkbrick.com.au

B = BUILDER / C = CONTRACTOR / M = MANUFACTURER / P = PRODUCT



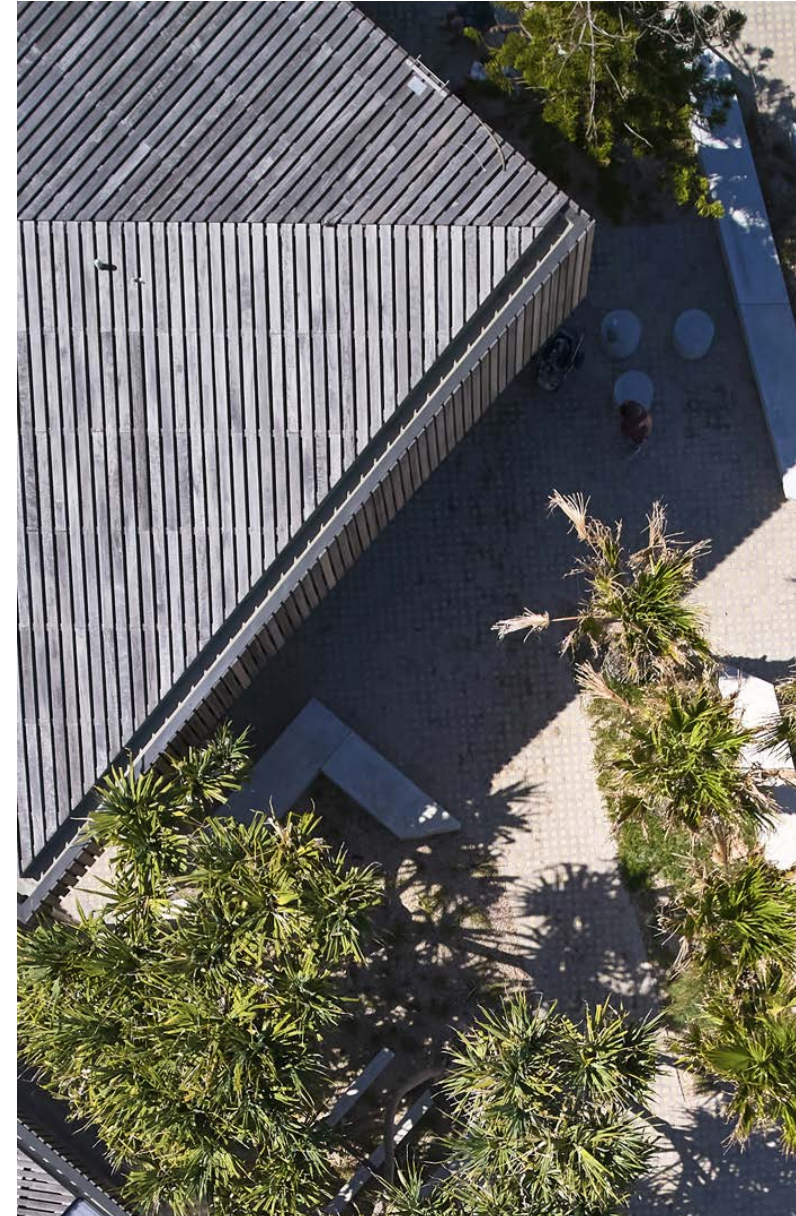
BRUCE MACKENZIE

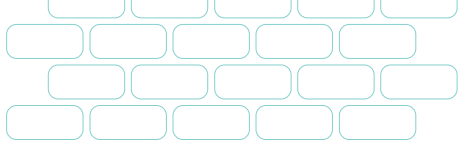
LANDSCAPE AWARD

THIS AWARD WAS PREVIOUSLY PART OF THE HORBURY HUNT AWARD IN 2013, EVOLVED TO INCLUDE CONCRETE MASONRY. IN 2014, THIS AWARD WAS NAMED AFTER RENOWNED AUSTRALIAN LANDSCAPE ARCHITECT BRUCE MACKENZIE AM.

Bruce Mackenzie is responsible for some of Australia's greatest landscape projects, spanning over five decades. He has designed numerous Australian landmarks and has won many design awards, highlighting his great contribution to the landscape design community. In 2011, he wrote and published *Design With Lanscape*, his fifty-year journey through landscape architecture. Mackenzie was a founding member of the Australian Institute of Landscape Architects (AILA) and has been a state and national president. He was presented with the AILA Award in Landscape Architecture in 1986, and in June 1999 on the occasion of the Queen's Birthday Honours list, he was made a member of the Order of Australia (AM).

Photographer: Martin Mischkulnig





Concrete Masonry Association of Australia (CMAA) and **Think Brick Australia** are the peak bodies that represent the concrete masonry, clay brick and paver manufacturers of Australia.

Together, we create national campaigns to inspire designers, builders and consumers to use masonry as a contemporary, versatile and inspiring building material. CMAA supports the concrete masonry industry by providing technical information and advice to architects, engineers, specifiers and educators.

CMAA also publishes technical manuals, data sheets and software packages relating to concrete block walling, concrete paving, permeable paving and concrete masonry retaining walls, which are free to download from the CMAA website.

Think Brick and CMAA's purpose is to ensure clay brick and concrete masonry is recognised as a pre-eminent material by leading architects, developers, builders and property owners. We are committed to promoting exemplary building and landscape design using concrete, clay bricks and pavers.

ALLIANZ STADIUM

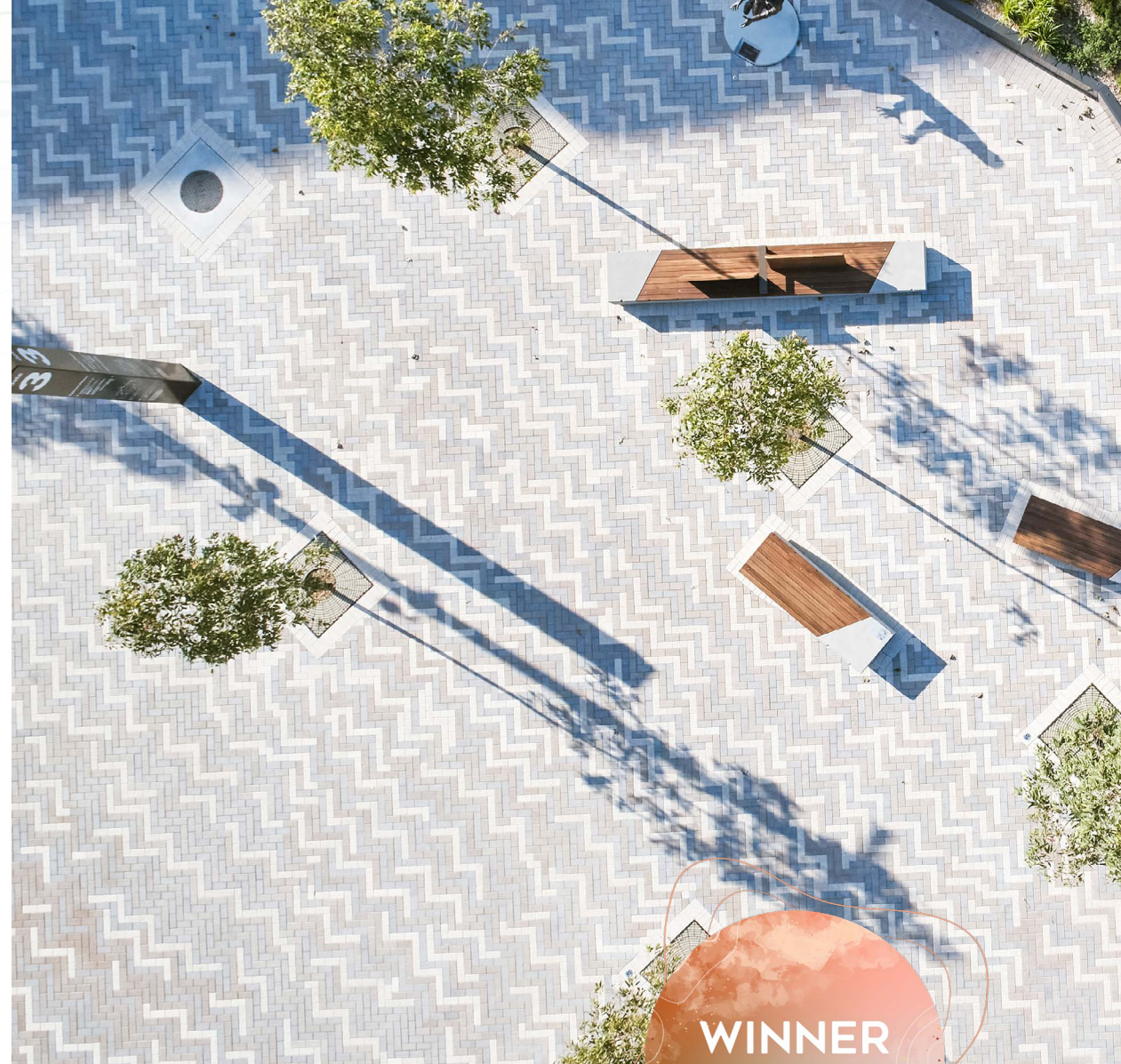
ASPECT STUDIOS
COX ARCHITECTURE

The architect was engaged by the New South Wales Government to design Allianz Stadium's public domain. For the first time, the stadium precinct is embedded in its surrounding context. Its design stitches the surrounding neighbourhoods together to ground it in place physically, culturally, and historically.

Brick walls define the main entrances. A special paving mix marks the key entry sites and active gathering spaces to provide a clear "front door" treatment.

The walls are raked to reduce their scale, while the brick bonding adds texture, pattern and articulation to their overall form.

The new brick façade sensitively relates to the brick buttress and avoids a clumsy replication of the heritage detail.



Photographer: Florian Groehn

WINNER

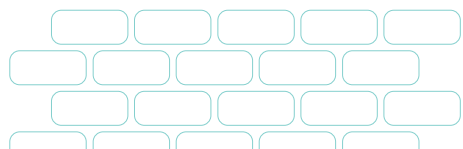
BRUCE MACKENZIE
LANDSCAPE AWARD
2023

MANUFACTURER Austral Masonry
PAVER COLLECTION Techpave 80 - Custom
BUILDER John Holland Group
CONTRACTOR Lamio Masonry Services & Sam The Paving Man

2023 JURY STATEMENT

“It is hard to make a large area feel intimate and activated, yet the brick patterning brings the scale of this project down to a human level and helps to animate the stadium. The patterns in the bricks and pavers create an “urban carpet” that’s visually appealing from all directions.

This urban carpet serves to connect the neighbourhood and facilitate pleasant journeys. There’s a real strength in the design idea and execution of the work that showcases the value of making long-lasting investments in public spaces.”



WREN HOUSE

WOLVERIDGE ARCHITECTS

BETHANY WILLIAMSON ARCHITECTURE

Wren House is a speculative project home located in Mt. Martha, Victoria. The question was asked if it was possible to bring the same level of craft and refinement typically only reserved for a custom designed house to a built-to-sell design.

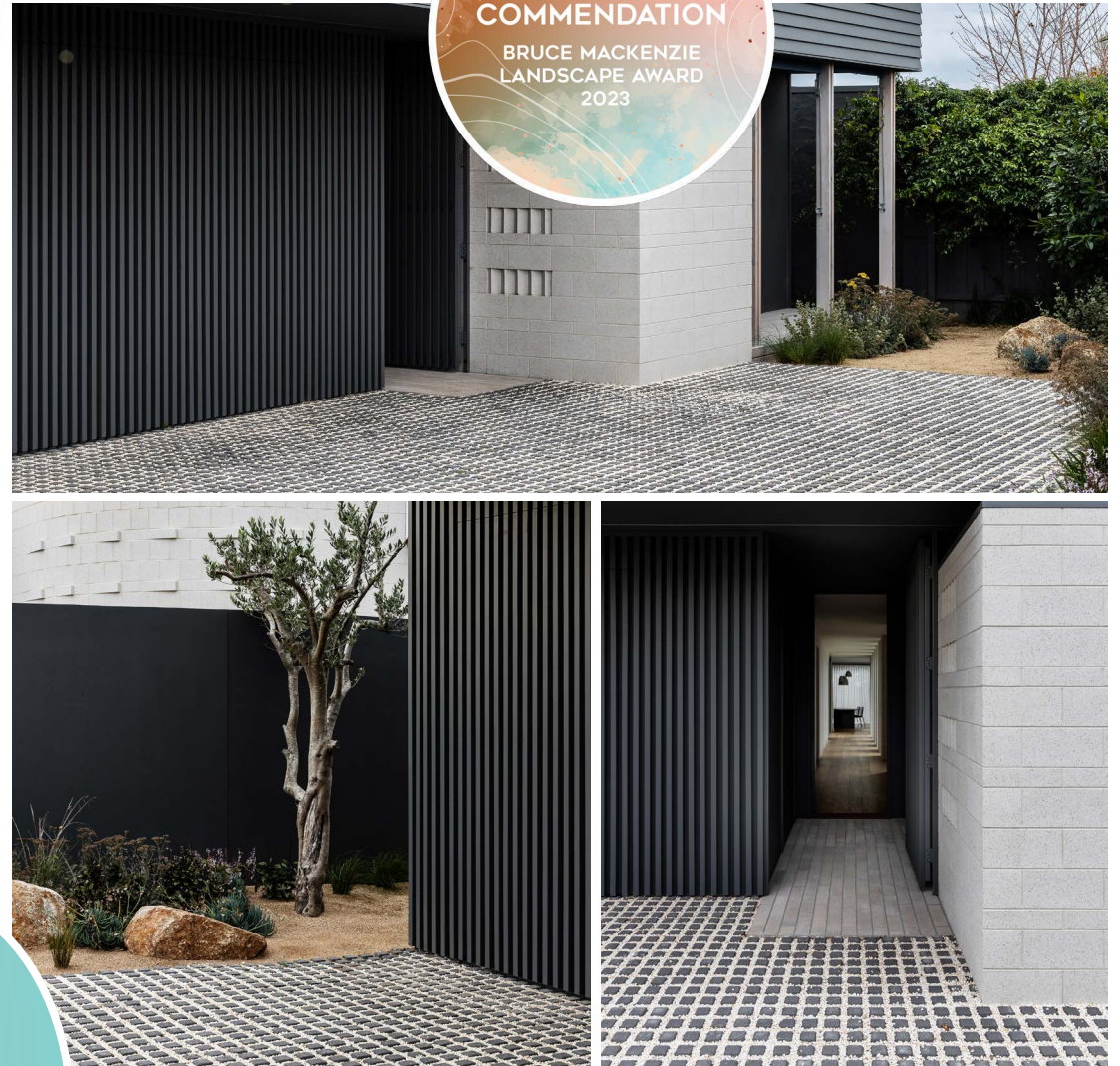
In an ode to the Mt. Martha beach house tradition, the skin and bones have been carefully selected, with robust masonry leveraging the thermal comfort properties of considered heavy-weight construction and offsetting the local area's weatherboard cladding vernacular.

As part of a voluntary Water Sensitive Urban Design measure, permeable reinforced grass paving to the driveway improves the quality of storm water runoff from the site and reduces reliance on the region's stormwater infrastructure – thus minimising the 'Urban Heat Island' effect.

MANUFACTURER Adbri Masonry
PAVER COLLECTION Turfgrid - Charcoal
BUILDER Ongarello
CONTRACTOR Ongarello

HIGH
COMMENDATION

BRUCE MACKENZIE
LANDSCAPE AWARD
2023

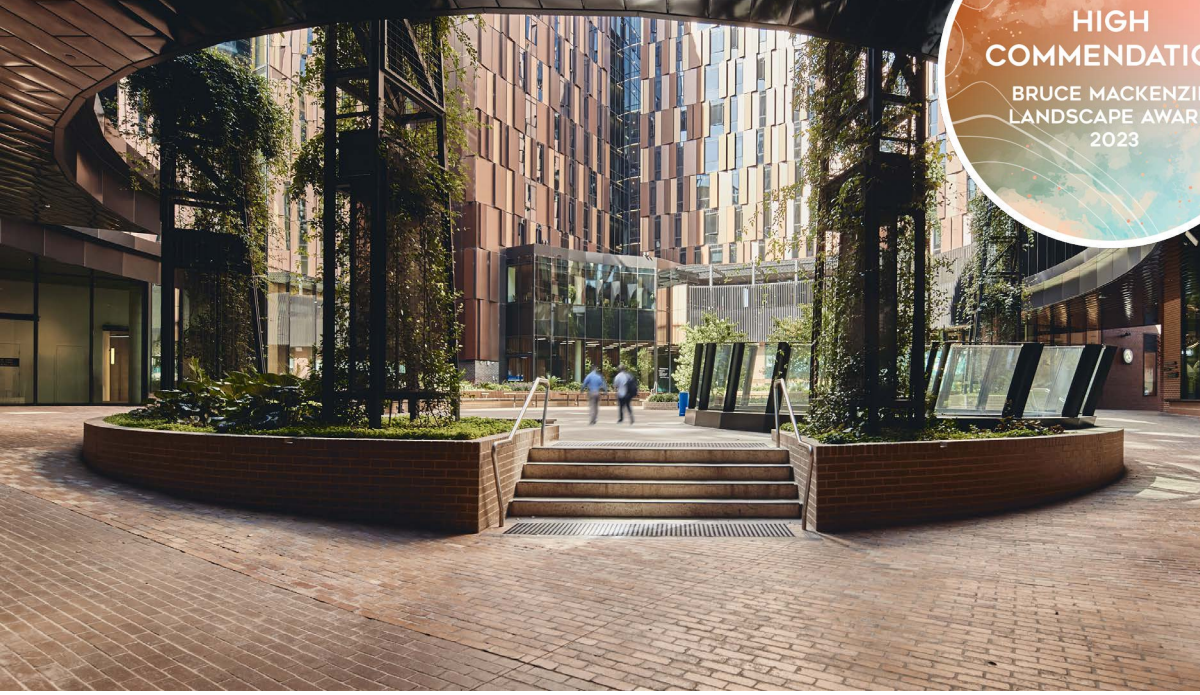


Photographer: Timothy Kaye

MELBOURNE CONNECT
ASPECT STUDIOS
WOODS BAGOT
HAYBALL

Photographer: Peter Bennetts

HIGH
COMMENDATION
BRUCE MACKENZIE
LANDSCAPE AWARD
2023



Melbourne Connect is a purpose-built innovation hub that connects the University of Melbourne with the area's dense network of institutions and organisations, and the hospital precinct.

Brick was used throughout the public realm and is its defining physical characteristic – it appears in paving, wall cladding and furniture design. Brick gives cohesion to the space and celebrates the site's past as the Royal Women's Hospital and pays respect to Traditional Owners through the Indigenous naming of the laneways and central courtyard.

The brick paving design pays attention to the footprint of the former 3AW Community Wing, tracing its outline using bricks retained from the demolished building. This gesture evokes the curiosity of visitors regarding the site's past.

MANUFACTURER Nubrik
BRICK/PAVER COLLECTION Artisan - Wolf & Avalanche;
Traditional - Chapel Red | Recycled Brick
BUILDER Lendlease Corporation & Ace Contractors Group
CONTRACTOR University of Melbourne

BURWOOD BRICKWORKS PLAYSPACE

MDG LANDSCAPES

Photographer: James Newman

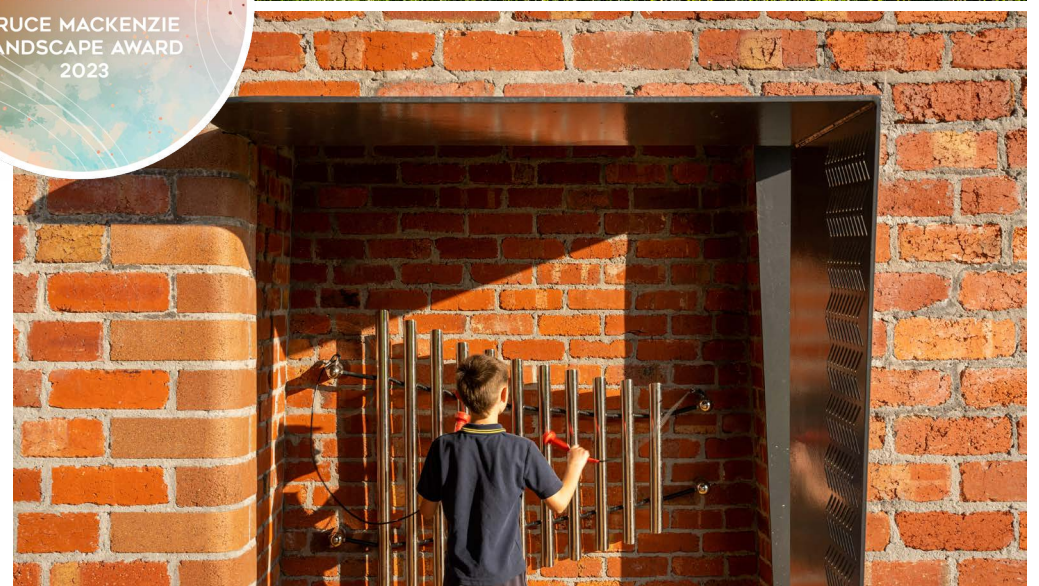
Burwood Brickworks is an urban infill project formed upon a historic quarry. The brick tower and playspace are the focal point of the main parklands.

Its design playfully invites children to clamber up the tiered quarry embankment, then scale the tower to ring the bell or whizz down the slide.

Windows are inserted at key moments to frame views and offer opportunities for kids to wave to their parents. The use of bricks in a playspace was challenging and required close collaboration between the architect, play auditor and builder.

The hit and miss brick walls were painstakingly constructed with millimetre-perfect precision and new bullnose bricks were 'hand-weathered' to match the surrounding recycled-brick, before being inserted at strategic locations to make the playspace safe for small hands and heads.

The forms and materials employed reveal the history of the brickworks. All materials were sourced locally, making this a highly sustainable project that demonstrates how bricks can be used in new and innovative ways.



MANUFACTURER Recycled Brick

BUILDER Super Gardens

CONTRACTOR Super Gardens

LONG REEF SURF CLUB PUBLIC DOMAIN

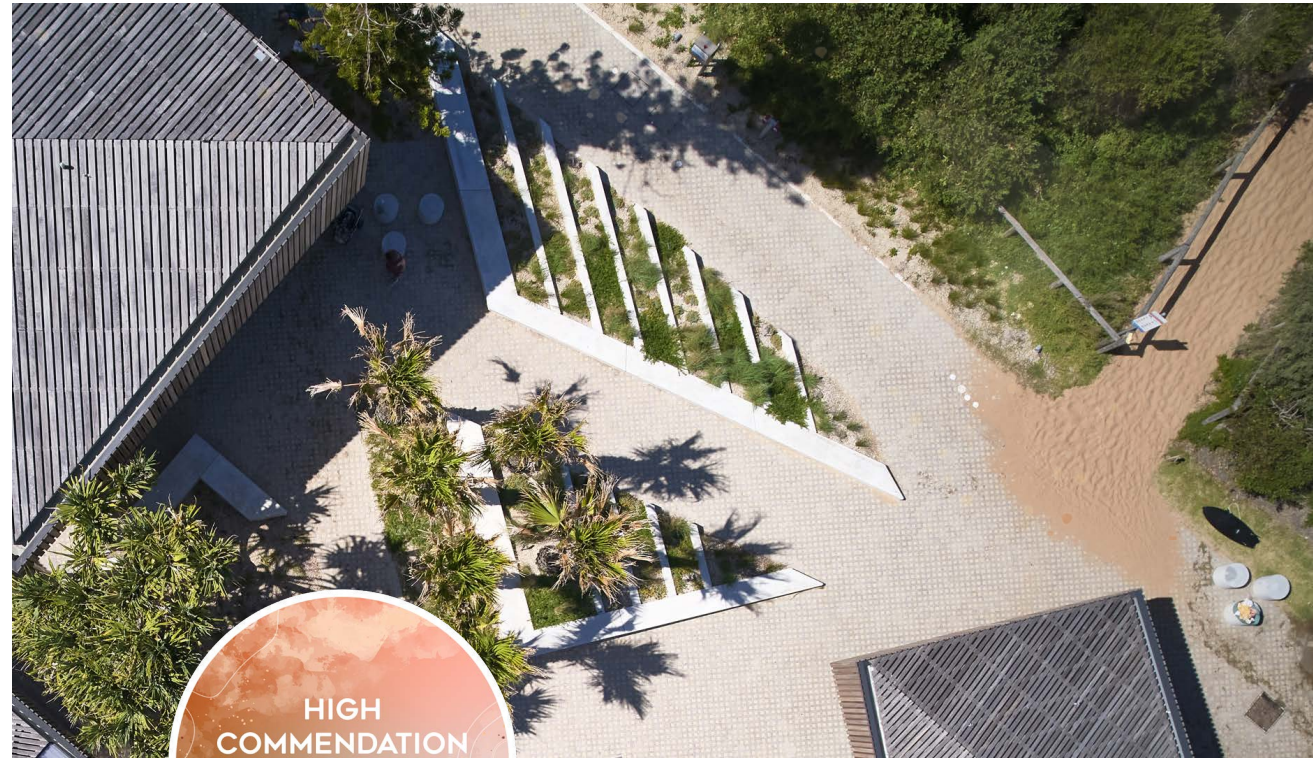
TYRELL STUDIO

Long Reef Surf Club Public Domain is a unique project that invites the beachside dune system into its main courtyard by using seating elements as scaffolds to capture windblown sand.

After much experimentation, a precast paving system was used to create a permeable surface over the sandy substrate. Some paver voids were left to infill with sand and vegetation over time, blurring the edge of the hardscape with the natural dune system.

Bespoke sandstone infill pavers were then designed to sit within the voids where accessible surfaces were required. In this way, a beautiful tapestry-like ground plane was created to sit as one with the tones, colours, and textures of the dunescape, whilst simultaneously creating a highly usable surface for the intensive activities of the surf club.

Photographer: Martin Mischkulnig



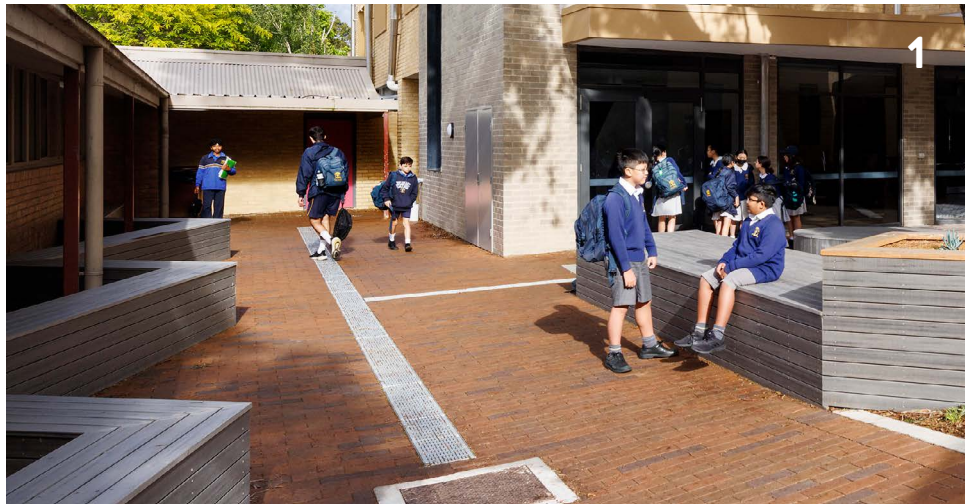
HIGH
COMMENDATION

BRUCE MACKENZIE
LANDSCAPE AWARD
2023



MANUFACTURER National Masonry
BRICK/PAVER COLLECTION Gridpave - Natural
BUILDER Grindley

BRUCE MACKENZIE LANDSCAPE ENTRANTS



1. WAVERLEY CHRISTIAN COLLEGE PRIMARY WING
WILLIAMS ROSS ARCHITECTS

B: Harris HMC
 C: Trevs Brick and Block Laying
 M: Bowral Bricks
 P: London Pavers - Brahman Granite, Regency Grey & Silver Sand | Adbri Masonry - Ecopave 50 - Charcoal- Charcoal

View all the entries online at thinkbrick.com.au



TOP
 40

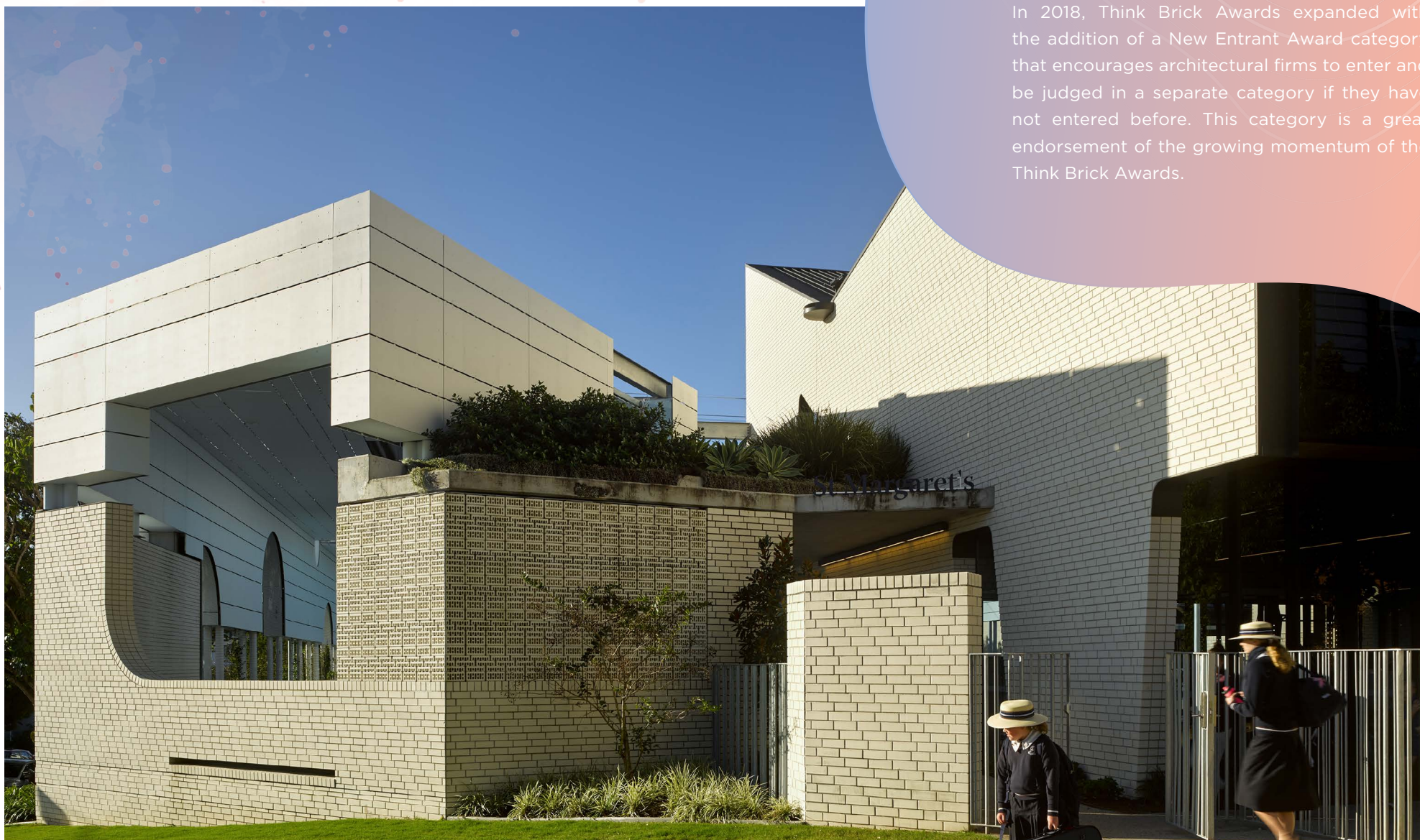
2

2. KOOYOO STREET
 Tract - Urban and Landscape Design
CBR Consulting
 B: B&C Plumbing
 C: Ramcat Landscaping Construction
 M: Adbri Masonry

St Margaret's Sports Precinct
Blight Rayner Architects

NEW ENTRANT AWARD

In 2018, Think Brick Awards expanded with the addition of a New Entrant Award category that encourages architectural firms to enter and be judged in a separate category if they have not entered before. This category is a great endorsement of the growing momentum of the Think Brick Awards.



Photographer: Christopher Frederick Jones

THE ROX CORE COLLECTIVE ARCHITECTS

The Rox Apartments make a positive contribution to Hobart's urban realm whilst respectfully restoring and reinvigorating the surrounding heritage buildings.

The development comprises a new apartment building with 13 apartments and a ground floor commercial space, plus the careful restoration of the historic Scotch College at the rear of Roxburgh House to accommodate two new apartments.

The design team drew on nearby buildings to inform the architectural expression. This included curved corners in reference to the locale's white brick Art Deco buildings.

A lime mortar bagging was applied to the upper levels, visually softening the brick patterning and enhancing the building's sculptural quality. Chamfered bricks were used at the edges of the upper window reveals to enhance the visual depth of the wall and widen the outlook from within the private residences.

MANUFACTURER Austral Bricks

BRICK COLLECTION Yarra - Fitzroy & Parkville;
Access - Ash; La Paloma - Gaudi

BUILDER Vos Construction & Joinery

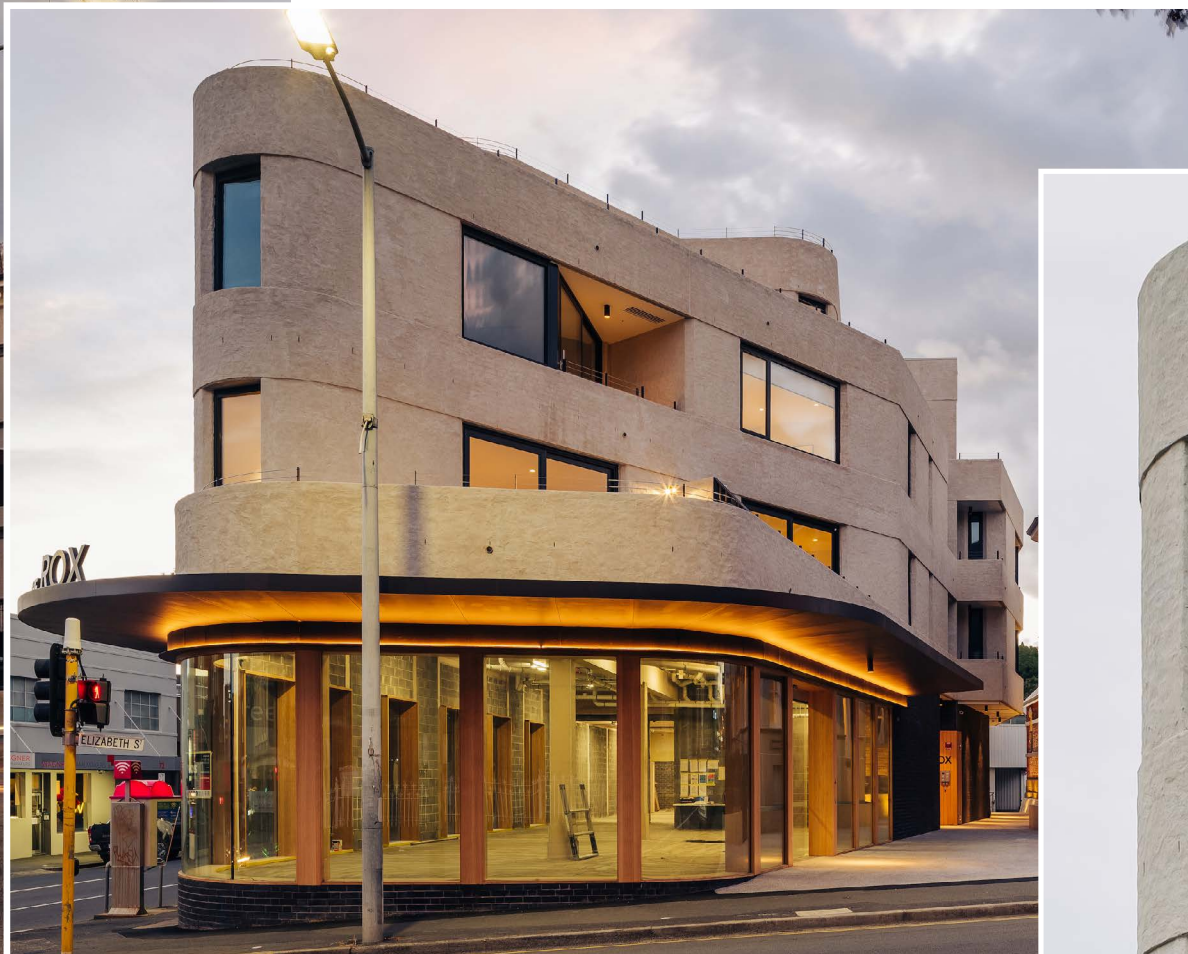
CONTRACTOR All Brick Tasmania

Photographer: Adam Gibson



2023 JURY STATEMENT

“The Rox makes a sophisticated statement about brick. It’s simple, elegant and fits snugly in its urban context. Brickwork has been used to great effect in this cleverly conceived design solution that frames the street. The scale, colour and masonry materials are respectful of the surrounds and humanising. The sense of invitation engendered in the construction is reinforced by the carefully considered brick selections.”

WINNERNEW ENTRANT
AWARD 2023

RESIDENCE 264

ENZO CAROSCIO ARCHITECTURE

Residence 264 has a two-storey, articulated open brick façade that provides security and privacy. Its internal spaces are encased in crafted brick architecture and feel like sanctuaries within the urban city setting.

Limitations of space are disguised via the integrated transition of inside and out. Brick walls feature in the living spaces and full glazed walls allow the external light and landscape to feel as if they are part of the interior.

This project clearly demonstrates that a small site can overcome its limitations with carefully considered design and site configuration. Its textured and highly articulated architecture responds to the gritty urban street setting while concealing the amenity, richness and comfort of a family home within.

MANUFACTURER Bowral Bricks

BRICK COLLECTION Bowral76 - Simmental Silver

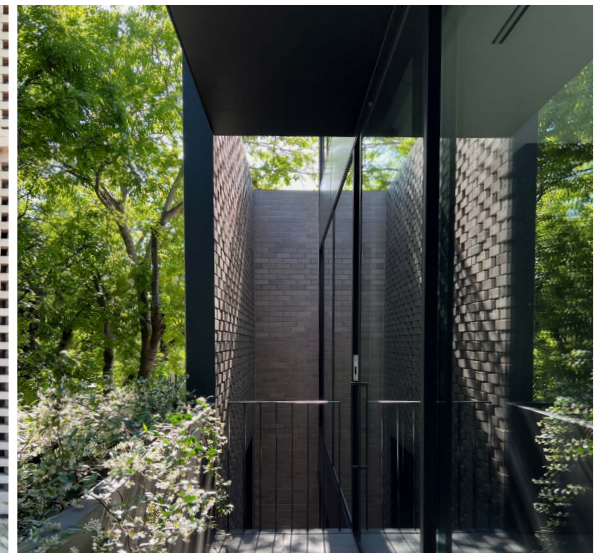
BUILDER Active Building developments

CONTRACTOR Pro-Line Bricklaying

HIGH
COMMENDATION

NEW ENTRANT
AWARD 20233

Photographer: Peter Fisher & Enzo Caroscio



THYNE HOUSE
X SQUARED ARCHITECTS
 IN ASSOCIATION WITH
ROBERT CARROLL & ASSOCIATES

Photographer: Natasha Mulhall



**HIGH
 COMMENDATION**

**NEW ENTRANT
 AWARD 20233**

Thyne House is a supported youth accommodation facility in Launceston that's located within a sprawling heritage-listed complex of former industrial buildings.

It was important for this prominent, contemporary building to reference Launceston's long history of clay brick construction. To this end, the architects worked closely with a brick maker to develop a unique product that was characterised by a rich brown colour and significant surface flaring - a contemporary take on the traditional Launceston brick.

Three small, semi-derelict industrial buildings occupied the site. Retaining part of them was integral to the design process.

Furthermore, the geometry of the development has been set out to allow the walls of the original buildings to be expressed internally, where they provide a unique finish to some of the units.

MANUFACTURER Daniel Robertson
BRICK COLLECTION Hawthorn - Custom Black Smooth
BUILDER Vos Construction & Joinery
CONTRACTOR All Brick Tasmania

MILLARD PLACE
TERRACES GLEBE
WMK ARCHITECTURE

Brickwork has been cleverly applied to acknowledge the industrial past of the Millard Place Terraces development – a finely layered, three-level complex of 15 residences.

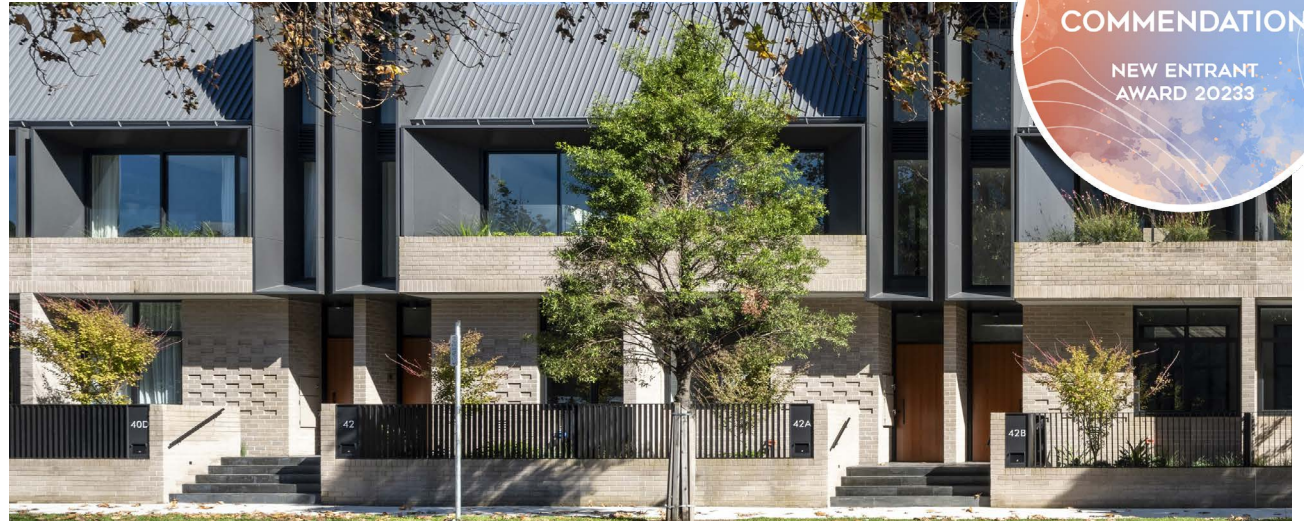
Brick plays a starring role on the ground level and Level 1, where it is treated as a sculptural form and makes playful references to the Old Glenore Meats Logo that adorned the original building.

The architecture reinforces the street scale and simultaneously reimagines the site's identity with its strong forms and the continually changing play of light and shadow on its facades.

Photographer: Richard Glover

HIGH
COMMENDATION

NEW ENTRANT
AWARD 20233



MANUFACTURER Bowral Bricks
BRICK COLLECTION Bowral76 - Simmental Silver
BUILDER DeCode

ST MARGARET'S SPORTS PRECINCT

BLIGHT RAYNER ARCHITECTURE

St Margaret's Anglican Girls School Sports Precinct was designed to inspire students via architecture that invites participation. Bricks were specifically selected and patterned to form this precinct, which is located on the side of a hill in suburban Brisbane.

A series of new brick buildings now extends out of the site's 'mesa'-like base to continue the existing campus's use of masonry in a dynamically detailed way. These buildings form a generous open space where the whole school community can gather - something that was not previously possible.

The brickwork is highlighted in the form of running bonds and patterning that creates a series of articulated surfaces. These solid and perforated surfaces are reactive to light, create shade and promote ventilation to key spaces.

HIGH
COMMENDATION

NEW ENTRANT
AWARD 20233

Photographer: Christopher Frederick Jones

MANUFACTURER Austral Bricks

BRICK COLLECTION La Paloma -Miro; La Paloma Grande - Miro

BUILDER Tomkins

CONTRACTOR Solutions Built



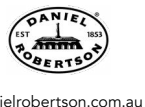
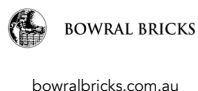
NATIONAL MEMBERS



STATE MEMBER



REGIONAL MEMBERS



ASSOCIATE MEMBERS



SPONSORING MEMBERS



STATE MEMBERS



GENERAL MEMBERS



ASSOCIATES



INTERNATIONAL



NATIONAL MEMBERS



STATE MEMBER



VIEW ALL THE ENTRIES ONLINE
THINKBRICK.COM.AU






LISTEN TO THE
THINK BRICK
PODCAST



-  thinkbrickaustralia
-  thinkbrickaustralia
-  Think Brick Australia
-  Think Brick Australia



-  CMAAaus
-  cmaaaus
-  Concrete Masonry Association of Australia
-  Concrete Masonry Association of Australia



-  ausrooftiles
-  ausrooftiles
-  Australian Roofing Tile Association

THINK
BRICK
AUSTRALIA

CMAA

ARTA