


A photograph of a modern, two-story house with light-colored brick walls and large, dark-framed windows. The house has a flat roofline. The foreground features a paved patio area with several clumps of tall, feathery grasses and a small, young tree on the right. A small black outdoor light is visible near the grass. The word "Resilience" is overlaid in a large, elegant, yellow script font in the center of the image.

Resilience

[THINK BRICK AWARDS 2024]

A photograph of a riverbank. In the foreground, there are tall, dry reeds. The middle ground shows a grassy bank with a large, dense weeping tree. To the left, a modern multi-story building with a red and white facade is visible. The background is a cloudy sky.

Bruce Street by Carr
Manufacturer — Nubrik
Builder — Brickworks
Contractor — Brick by Brick
Photographer — Rory Gardiner

We acknowledge the Traditional Custodians of the land on which this publication was created. Think Brick Australia recognises First Nations people's continuing legacy of storytelling and their connection to the land and sea. We pay respects to Ancestors and Elders, past present and emerging.

【 *Introduction* 】

Think Brick Australia represents Australia's clay brick and paver manufacturers. Our mission is to be the credible voice of the clay brick and paver industry. Our industry strategy focuses on advocacy, sustainability, technical assistance, research, engagement and education on clay brick and paver products.

Part of our mission is to ensure clay brick is recognised as a pre-eminent building material by leading architects, developers, builders and property owners. We are committed to promoting exemplary building and landscape design using clay bricks and pavers.

Since 2005 the Think Brick Awards have encouraged architects to push boundaries and reimagine the application of brick, block, pavers and roof tiles in contemporary design. Starting as a design competition involving architects presenting masonry design concepts, the program has evolved into Australia's richest design awards.

Partnering with the Concrete Masonry Association of Australia (CMAA) and the Australian Roofing Tile Association (ARTA), the awards feature categories that highlight the evolving design excellence in concrete blockwork, brickwork, and pavers, alongside the timeless artistry of clay and concrete roof tiles.

Thank you to the architects who envision and create inspiring spaces. Your innovation and dedication set the standard for excellence in design. Thank you to the bricklayers whose craftsmanship and precision ensure the structural integrity and beauty of these visions. Thank you to the roof tilers whose expertise and skill protect and enhance our structures, making them both resilient and timeless. And a special thank you to our Jury for their rigorous evaluation and insightful judgment, ensuring that the finest contributions to architectural excellence are recognised.



Sunday by Architecture architecture
Kevin Borland Masonry 2023 — High Commendation
Manufacturer — Austral Masonry | GB Masonry
Builder — Grenville Architectural Construction
Contractor — Rendina Bricklaying
Photographer — Tom Ross

01

INTRODUCTION

Juror Message	8
Awards Jury 2024	9

02

HORBURY HUNT COMMERCIAL

Introduction	11
Winner	13
New Entrant Winner	21
Highly Commended	27
Finalists	39
Horbury Hunt Commercial Entrants	49

HORBURY HUNT RESIDENTIAL

Introduction	59
Winner	61
Highly Commended	69
Finalists	79
Horbury Hunt Residential Entrants	93

03

KEVIN BORLAND MASONRY

Introduction	101
Winner	103
Highly Commended	111
Finalists	115
Kevin Borland Masonry Entrants	127

04

BRUCE MACKENZIE LANDSCAPE

Introduction	135
Winner	137
Highly Commended	145
Finalists	149
Bruce Mackenzie Landscape Entrants	153

05

ROBIN DODS ROOF TILES

Introduction	157
Winner	159
Highly Commended	165
Finalists	169
Robin Dods Roof Tiles Entrants	175





A note from our Head Juror

The humble brick stands as an ancient and timeless material that has woven itself into the fabric of human history for millennia. From the ancient civilisations of Mesopotamia to the Renaissance cities of Europe, the enduring brick has shaped architectural landscapes worldwide. Each unit carries stories of craftsmanship, cultural heritage, and resilience, reflecting their evolution from traditional building techniques to modern sustainable practices. Centred on the role of designers in shaping our future homes, buildings, and cities, the theme of resilience was conceived for this year's awards.

In 2024, as Australia progresses towards net zero goals, the importance of resilient design becomes paramount, serving as a cornerstone in creating sustainable, energy-efficient structures that can navigate the complexities of a changing climate and contribute to the overall environmental stewardship.

With over 200 projects to examine and analyse, the Jury had no easy task in deliberating the winners across six diverse categories. However, throughout the judging process, we discovered complex and sophisticated projects that showcased the beauty and raw form of the humble clay brick. We found delight in the adaptive reuse of structures, witnessing new life and narratives infused into their essence and design with masonry. We encountered timeless elegance in projects using roof tiles to harness their durability and rich materiality. Most promisingly, we discovered a host of emerging architects exploring new expressions and adaptations of these fundamental building materials.

Thank you to my fellow jurors for their expertise throughout the judging process: Tamara Donnellan (ASPECT Studios), Adrian Iredale (Iredale Pederson Hook), Jessica Spresser (SPRESSER) and Think Brick Australia CEO Cathy Inglis AM. The discussions and debate from the Jury brought new perspectives and awareness to certain projects, whilst others emerged organically as unanimous favourites. The selected accoladed projects you are about to view embody resilience in its many forms, and represent a small part of the homegrown talent and love that Australian designers have for masonry and roof tiles.

Bricks, blocks, pavers and roof tiles stand as enduring symbols of resilience and durability in the Australian architectural narrative. Crafted from locally sourced materials, these versatile building materials have weathered the test of time, mirroring the tenacity of the Australian spirit. Their inherent strength and fire resistance make them resilient against the country's diverse environmental challenges, from scorching summers to coastal winds.

The Australian story is etched in the hues of countless brick structures that have withstood the harsh conditions, embodying the pioneering ethos of the nation. Beyond their structural prowess, bricks serve as storytellers, narrating tales of innovation and resilience as they contribute to energy-efficient designs and climate-responsive architecture. As Australia progresses towards a net-zero future, the enduring legacy of bricks in construction continues to evolve, seamlessly blending tradition with a commitment to resilient building practices.

– Bob Nation AM



Bob Nation AM

Holding a Master's Degree in Architecture from the University of Toronto, Bob Nation AM is a distinguished architect with over 50 years of experience. As a Life Fellow of the Royal Australian Institute of Architects (RAIA) and Honorary member of the American Institute of Architects, his career spans locally from Hobart to influential roles globally in Hong Kong, Dubai, New York and more.

Serving as the National President of the RAIA in 2005, Bob held key roles in prestigious firms and served as the Design Director for the Barangaroo Delivery Authority in Sydney, overseeing a multi-billion-dollar urban project, exemplifying his commitment to excellence and sustainable development.

Bob stands as a dedicated figure in the international architectural community, combining a profound understanding of design with a passion for resilience.



Jessica Spresser

Jessica Spresser is an emerging Australian architect. Her architecture studio, Besley & Spresser, combines practice, making and research. In 2020, Jessica won a national competition for a public pavilion on Sydney Harbour alongside Peter Besley, which is due for completion this year.

In 2021, the studio won another competition for a National Memorial in Canberra. Jessica holds a Master of Architecture from the University of Queensland, where she was awarded the Karl and Gertrude Langer Memorial Prize for Design, and is currently undertaking a PhD. She is a sessional academic at the University of Sydney and has been involved in various exhibitions including the 2012 Venice Biennale.



Adrian Iredale

Adrian is a Design Architect in its purest form, clearly thinking through drawing to translate ideas into clear communication. Educated in Perth (Curtin University), Melbourne (MArch Research RMIT) and Frankfurt (Staatliche Hochschule für Bildende Künste-Städelschule), Adrian's experience in practice and lecturing and his extensive travels provide him with a truly global perspective.

He has specific experience in urban design, education, aged care, custodial, sport and recreation and innovative, low cost, sustainable housing for both public and private clients. He has significant experience working with brick and has completed numerous international study tours, while incorporating gained knowledge into built projects. These projects have been highly rewarded and published and continue to set benchmarks for innovation.



Tamara Donnellan

Tamara is a Studio Director of ASPECT's Sydney Studio and has over 20 years' experience working across architecture, urban design and landscape architecture. Tamara excels in stakeholder engagement and consultation, design strategy, coordination of project teams and execution of projects across all phases of the design process.

Tamara has been a member of the GANSW State Design Review Panel for several years and has been appointed to the specialist Precinct Panel which was formed late in 2023. Through this involvement she champions high quality place and public benefit outcomes. The Australian Institute of Architects acknowledged her significant achievements in architectural practice, education and advocacy with the AIA (NSW Chapter) 2010 Emerging Architect Prize.



Cathy Inglis AM

With an impressive career spanning over 25 years in the industry, Cathy is an experienced Materials Engineer and in her previous role leading the innovation team in Brickworks Building Products, she was responsible nationally for the research and development of new products, as well as improving the energy efficiency of operations to create more sustainable building products. Cathy is on the National Board of the Housing Industry Association (HIA) and was awarded a Member of the Order of Australia for services to the building and construction industry in 2020.

As a staunch advocate for sustainable and resilient industry development, Cathy aims to reinforce the associations' initiatives in advancing environmentally conscious methodologies, encouraging research and development of new products and construction technologies, and ensuring the industry remains at the forefront of sustainability efforts.

HORBURY HUNT COMMERCIAL

Kurraba Residences by SJB
Manufacturer — Nubrik

Products — Traditional - Domain Terracotta | Empire Brik - Rail System
Builder — Richard Crookes Construction
Contractor — Aspec Masonry
Photographer — Tom Roe

01

This award was initiated by the Horbury Hunt Club and by request from architects and designers. Its purpose is to reward innovation and craftsmanship in brickwork and recognises the contribution of architects, builders, bricklayers and manufacturers in that process. The Horbury Hunt Award categories include commercial and residential built projects that exemplify outstanding craftsmanship and innovation through the use of clay face brick and pavers.

The award is named after John Horbury Hunt, a renowned architect who came to Australia from America in 1863. Hunt was known for introducing his distinctive and radical architecture to Sydney and rural New South Wales, including St Peter's Cathedral in Armidale and Convent of the Sacred Heart and Tivoli in Rose Bay.

WINNER — HORBURY HUNT COMMERCIAL

Melbourne Holocaust Museum

By Kerstin Thompson Architects

Light was a central driver for the Melbourne Holocaust Museum (MHM). Light is linked to illumination to knowledge, and given that education is central to the purpose of MHM, it seemed appropriate to deploy light as a motif and in creating welcoming, functional spaces for education, research and events.

Unlike the bunker-like appearance often associated with Holocaust Museums, MHM establishes visual and physical connections to activities, daylight, and the community. The façade is variegated through a combination of clay and solid glass bricks, calibrated according to light sensitivity and the nature of internal activities and spaces it encloses. Views into and out of the building are enabled to and from less light sensitive zones such as administration and classrooms, and withheld from gallery and museum spaces.

By incorporating glass bricks, the façade achieves transparency while maintaining the necessary security. Furthermore, the integration of the original heritage building reinforces MHM's role as a cultural repository, treating it as a significant artifact. The visually most open parts, formed by glass bricks in a hit and miss formation, are adjacent to the elevated memorial garden and central circulation spine that encompasses the stairs and breakout areas designed to provide some relief for visitors affected by the difficult museum content. Here views out of the MHM via windows and skylights aided by mirrors reflect the sky, clouds, rooftops - the local context - to bring visitors back to contemporary Melbourne from the difficult worlds and histories they have encountered through the museum.

Manufacturer — PGH Bricks & Pavers

Product — Morada - Ceniza

Builder — McCorkell Constructions

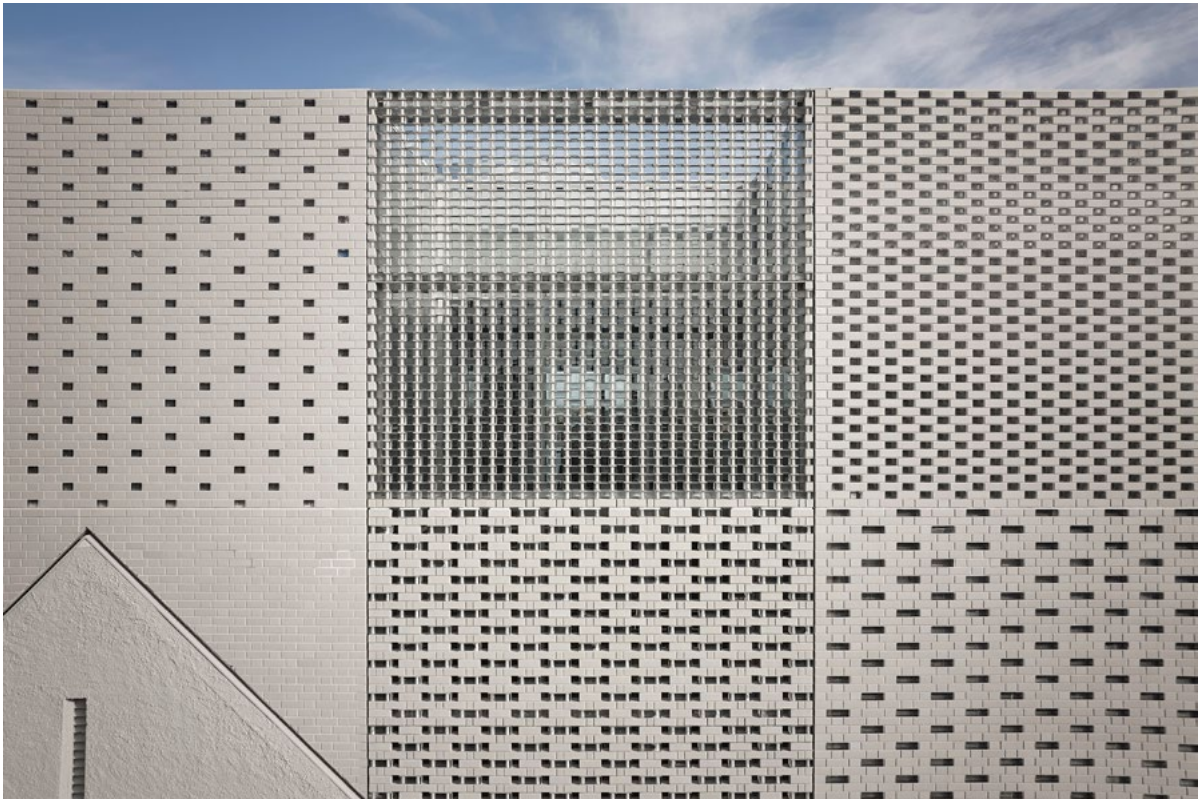
Contractor — The Third Little Pig

Photographer — Leo Showell & Derek Swalwell











“The Melbourne Holocaust Museum is an extraordinary project. The use of brick in a single plane, the interface with the heritage building and the detailing, combined with the textural and painterly qualities that are evoked from a single material are extraordinary. It was just a joy for the Jury to look at. Both the external appearance and internal experience of the light and the way brick has been used as a light shaping material is extraordinary.”







WINNER — NEW ENTRANT

Darlington Public School

By fjcstudio

The design concepts for Darlington encapsulate the school's core values, celebrating its industrial context and fostering strong connections to the Aboriginal Community. The previous 1973 School comprised one and two storey brick buildings with a brick boundary wall along Abercrombie and Golden Grove Streets. The new school seamlessly connects to its surroundings, offering glimpses of the inner courtyard from a long monolithic brick arch entrance, promoting a sense of both privacy and connection to community, forming a new function space for the school and locals.

The use of brick facades and sawtooth roofs responds to the industrial character of Everleigh and Darlington. The sawtooth brick forms highlight the regular teaching and learning volume and communal hall, meeting the street to recognise the importance of the communal hall in a double height volume. Bricks in a standard stretcher bond are used for ground level structures and boundary walls that respond to the predominant urban form by holding the street edge, providing protection and controlled views into the school campus through designated openings. Deep set brick windows for the learning spaces on level one are carefully shaded from heat load and direct western sun by single skin 45 mitred bat louvres in a stack bond.

The project effectively uses brick in a careful dialogue with the other building materials to provide solidarity, enclosure, performance and a long lasting, low maintenance facade. Careful and rigorous use of brick in detailed applications includes reveals, soffits and sills championing the brick.

Manufacturer — Bowral Bricks

Product — Bowral 76 - Bowral Blue & Bowral Brown

| Austral Bricks - La Paloma - Romero

Builder — AW Edwards

Contractor — Southern Cross Masonry

Photographer — Brett Boardman

FINALIST — HORBURY HUNT COMMERCIAL





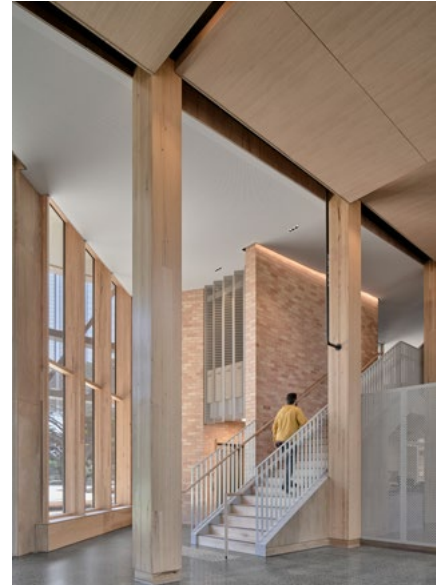
DARLINGTON
PUBLIC SCHOOL
ESTABLISHED 1877





“The use of refined brick detailing in a public school context is fascinating. It is also being used in a really interesting way across the diagram of the building. The three parts are all quite different, but all speak to the external elements or celebrating elements of the diagram of how the school use and functions come together.”





HIGHLY COMMENDED — HORBURY HUNT COMMERCIAL

Berninnet Cultural and Community Centre

By Jackson Clements Burrows Architects

Located on Phillip Island, Berninnet, (meaning Gather Together) creates a new purpose-built public building to support a range of uses including a theatre, library, gallery, museum, community function rooms and offices.

Evoking the region's natural geology and topography, the design feels inherently connected to and of its place. Warm, pink-cream brick references nearby sand dunes and beaches, whilst internal timber columns speak to the island's jetties and pier structures.

Sustainability was a central focus. Locally sourced material choices include carbon-neutral bricks made in Melbourne and sustainably sourced hardwood grown in Gippsland and engineered in Wantirna. Cross-laminated timber was manufactured in Albury-Wodonga. The building's ambitious sustainability agenda aligns with the Council's aspiration to produce a low energy, low carbon building, with ongoing low running costs due to thermally efficient Passivhaus envelope.

The building creates a dynamic and interactive destination that is set to become a source of civic pride. Bringing together the cultural and social aspirations of the community, it draws visitors to showcase the region's rich history and culture.

Designed to Passivhaus Standards and incorporating mass timber construction, the Centre expands and diversifies existing community programs and services and creates a place for people to meet and connect.

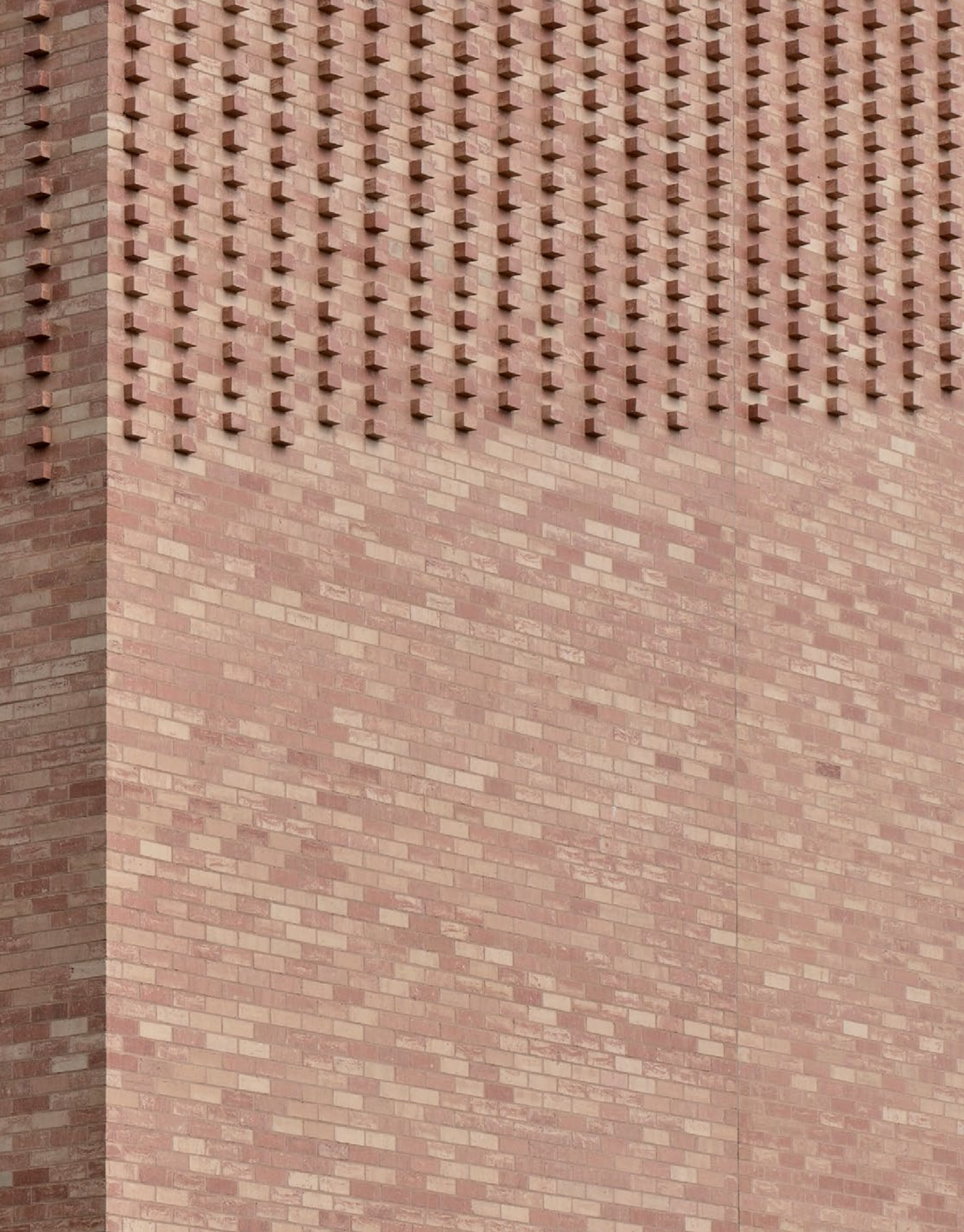
Manufacturer — Nubrik

Product — Australis - Murray Sunset

Builder & Contractor — McCorkell Constructions

Photographer — Peter Clarke







HIGHLY COMMENDED — HORBURY HUNT COMMERCIAL

The Round

By BKK Architects
& Kerstin Thompson Architects

Manufacturer — PGH Bricks & Pavers
Product — Smooth - Red & Terracotta;
Velour - Red & Terracotta; Brick Cladding System
Builder — Kane Constructions
Contractor — Lawler Bricklaying & Melbourne Masonry
Photographer — Derek Swalwell

The Round is the new cultural hub for the Whitehorse community. Welcoming and inspiring, it is the base for a diverse range of local community and business groups, artists, performers and patrons alike. For millennia this place has been recognised and used as ceremonial ground, for the convergence of many. Whitehorse, Nunawading or Namenarren – it is a place of many names and myriad stories.

A building in the round, its curvaceous perimeter creates a series of opportunities for place-making. Five Faces, Five Places. Unified through brick, some big, some small, each forges a robust, enduring and proudly civic presence responsive to its immediate context. The architecture celebrates the versatile properties of brick in a contemporary way. A mix of red brick arranged in striations reference the region's geomorphology and its history of clay harvesting. The bricks reveal varying effects in different light conditions, and to different orientations. The bottom half of the building is solid, full sized clay bricks, and the top half of the building is brickwork with a proprietary cladding system that utilises half clay bricks installed on a cold-rolled rail system.

Brick was chosen for both its aesthetic quality and local relevance. The City of Whitehorse area has a long history of brick manufacturing, including the Box Hill Brickworks and the Burwood Brickworks, which produced 100,000 bricks per week for new homes in the 1950s. In several places the long façade curves extend indoors, bringing the brick language into the foyers. These striking architectural moments are testament to brick's inherent versatility. Brick brings a robust, enduring and handmade quality to The Round, both indoors and out.









HIGHLY COMMENDED — NEW ENTRANT

Tarakan Street Social Housing

By NH Architecture, Bird de la Coeur Architects, Openwork & Tract

Tarakan Street is the redevelopment of the 1956 Olympic Village into a residential and community neighbourhood on a 1.3 ha site. It's an exemplar 'missing middle' suburb project providing appropriate, well-designed density. Funded under the Victorian Government's Big Housing Build, 130 tenure-blind social and affordable homes in three buildings, are sited around valued existing trees within a generous new garden, partly shared with the local community. New 'short cuts' through the site, a playground and BBQ areas activate a once stigmatised site by offering shared spaces for community connection.

Signalling a warm domestic character, brickwork was chosen for its long-life and low maintenance characteristics. Responding to both the memory of the former village and the colours of the bark on the beautiful existing trees, 'praline' and midnight blue bricks unite the three 'tenure blind' buildings to rehabilitate the site. Hit and miss fences are used to provide both texture and passive surveillance.

Tarakan is an exemplar in sustainable design, including Green Star certification, 100% fossil fuel free and up to 8.3 NatHERS stars. With an emphasis on locally made materials to support local manufacturing and radically reduce carbon in transport, as well as the use of certified carbon neutral bricks.

Manufacturer — Austral Bricks

Product — Indulgence - Praline

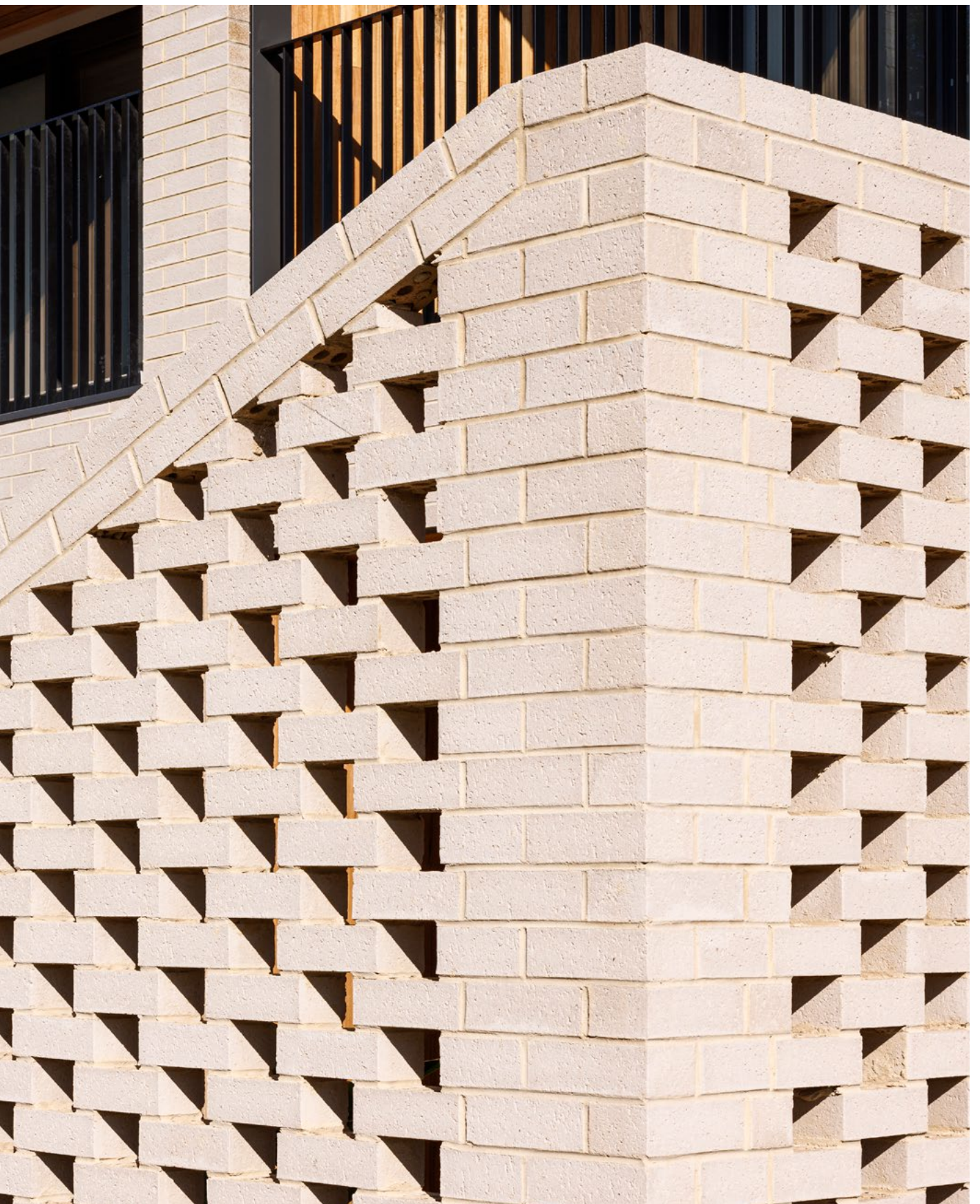
Builder — Besix Watpac

Contractor — Premium Precast & Form Brick

Photographer — Dianna Snape











FINALIST — HORBURY HUNT COMMERCIAL

Goodhope

By Those Architects

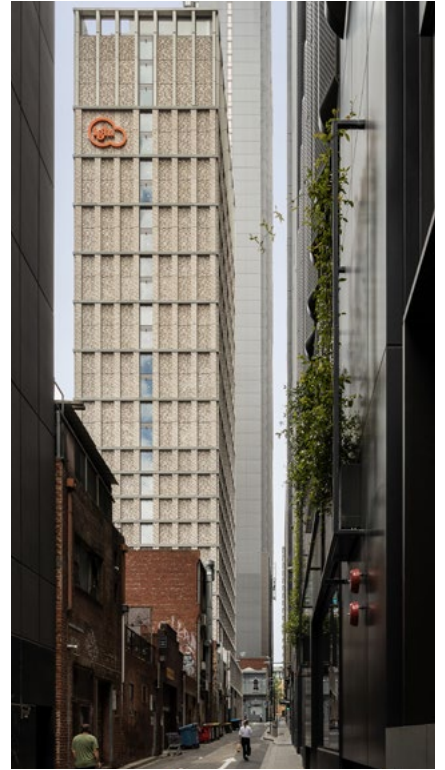
'Goodhope' celebrates the artistic link between architecture and film. What was once the Sherman Contemporary Art Foundation in Sydney's Paddington has transformed two existing buildings into a cohesive space to house the new office for See-Saw Films. Leaning on cinematic principles, the project's built form sought to mimic the rich, desaturated qualities of See-Saw films. A consideration of human scale led to the selection of handmade, custom-sized bricks which act as a unifying ribbon weaving its way throughout the building and greater site, anchoring the user.

The building is conceived as a series of 'moments' that capture the specific purpose of each space; whether for focus, inspiration, privacy, or collaboration. These moments are woven together using nuanced muted material choices and textural thresholds of detail.

Tumbled handmade bricks and raked mortar joints create an understated masonry skin that extends from the interior to encompass the landscape. Varying shades of cream and subtle textures softens Goodhope's built form.

Goodhope is characterised by ethically sourced, hand-crafted materials and considered spatial planning with a distinct relation to place. The site consolidates a family legacy that, like its unique brick construction will endure and withstand the test of time.

Manufacturer — Krause Bricks
Product — Emperor 380 mm - Ghost; Boutique Range 50 mm - Ghost
Builder — Reimer Developments
Contractor — The Brick Work Co
Photographer — Luc Rémond



FINALIST — HORBURY HUNT COMMERCIAL

Iglu Melbourne Central

By Bates Smart

Iglu Melbourne Central elegantly balances function and aesthetic. It offers 374 studio apartments and a new level of amenity for students who want to live in the CBD. Its architecture is designed to sit calmly within a variable street wall, reconciling the diversity of styles, heights and eras of materiality that make up its rapidly changing surroundings.

In response to the site's small footprint, the architect designed a slender tower that avoids stepping or façade recesses. Shifts within the gridded brick and concrete façade help to stack the mass relative to contextual datums.

The façade communicates the honest grid of the floorplates and studio width, with brick slip and smooth course verticals slightly recessed to the horizontal slabs. This move also references the materiality, colouration and trabecation found in the surrounding heritage architecture. The architect used a blend of 3 different variants from 2 ranges of bricks.

The building gives back to Russell Street at ground level, via a public café and gallery space. Level 1 hosts the kitchen, dining, study, relaxation and games areas. Above, studios maximise efficiency, functionality and comfort to support good living in tight quarters. An active rooftop bookends the active podium, with a gym, outdoor terrace and BBQ area overlooking Melbourne's skyline.

Manufacturer — Austral Bricks

Product — San Selmo Smoked - Grey Cashmere, Cloudy Silver & Opaque Slate; San Selmo Reclaimed - Limewash | Empire Brik - Rail System

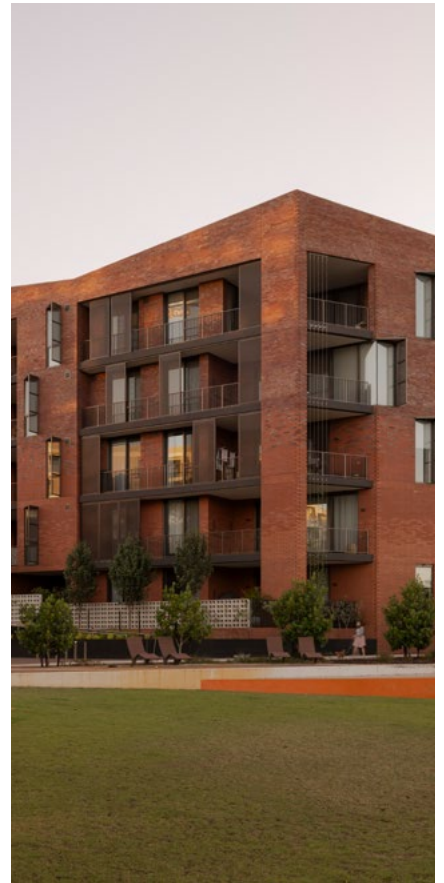
Builder — Kane Constructions

Contractor - Melbourne Masonry

Photographer — Felix Mooneeram







FINALIST — HORBURY HUNT COMMERCIAL

Victoria House

By MJA Studio & FINESPUN Architecture with PLACE Lab & Palassis Architects

Victoria House is a precinct defining mixed-use development centered around the adaptive re-use and residential additions to a Heritage-listed hospital by the developer. Careful study of the materiality of Victoria House directed the Project team to develop a material palette for the new buildings that was sympathetic and a built form which is referential so that old and new can exist in polite conversation together. When read from the Eastern entry axis the raking parapets of the new buildings talk to the varying peaks of Victoria House's roofline, while the grading colours of the brickwork transition down into the tones of Victoria House's clay tiles and ground floor brickwork datum.

Masonry face brickwork stands as the primary exterior material, symbolizing a tribute to the exceptional craftsmanship and versatile coursing capabilities inherent in ordinary brick. The three new residential wings have a light to dark colour gradient that is achieved through the use of 3 different red brick types. Modular bricks and 1/3 stretcher bond were used with a contrasting charcoal mortar.

The radial plan and its intersection with the various site boundaries created a number of different building angles, both acute and obtuse. A toothed corner detail was applied to each of these angles creating a number of vertical motifs. Sheet metal parapet capping was omitted in favour of a traditional brickwork parapet, combined with the recessed balconies, gives the new additions their monolithic character with the humble red brick taking centre stage.

Manufacturer — Midland Brick

Product — Classic Range - Subiaco Red, Kalbarri Red & Traditional Red

Builder — PACT Construction

Contractor — Lightning Masonry

Photographer — Dion Robeson





FINALIST — NEW ENTRANT

Liverpool Civic Tower

By **fjcstudio**

Framing the new civic plaza, the civic podium building is home to a new council program including administration and chambers. Referencing the heritage character of a number of significant local colonial buildings, the materiality brings a sense of its civic nature and permanence. The Northern Scott Street elevation creates a mid scale backdrop to civic life and to the new building-in-the-round library that sits within the plaza. Red brick with sandstone banding maintains a material narrative established in Liverpool, including the neighbouring School of Arts, detailed to create a human-scaled grain offsetting the mass of the podium facade.

The civic building's generous, full frontage arch celebrates the heritage of Greenway's local St Luke's Church and Hospital, extending the geometries of the open space into the foyer and connecting with the integrated council chambers above. Vertical brick blades and sandstone-toned horizontal bands provide depth, character and north-facing solar shade with a 50% wall to window ratio.

The primary system is deceptively simple - a conventional unitised curtain wall substrate supports brick-slip clad, steel framed vertical blades and horizontal sandstone-toned mineral-finished aluminium band clip-ons. The arch was formed by a vast steel subframe, clad with radially set-out brick-slips. Brick banding in the square celebrates the huddle-like heritage grid of the original Liverpool township.

Manufacturer — Bowral Bricks

Product — Bowral 76 - Capitol Red

Builder — Built

Contractor — Favetti & Sharvain Projects

Photographer — Brett Boardman

FINALIST — HORBURY HUNT COMMERCIAL

East Sydney Collection

By MHN Design Union





The East Sydney Collection is a visionary adaptive reuse project that transformed a 1930s car showroom and service centre into a mixed-use commercial and residential development. Situated in a historic Sydney neighbourhood, the original structure is cherished by the local community for its minimalist, functional architectural style, featuring curved, smooth-rendered façades, restrained articulation, and ribbons of steel-framed glazing.

The redevelopment involved demolishing a portion of the site that was unoccupied by the showroom, providing a space for new construction that seamlessly connects the existing showroom façade to the adjacent residential development. The new infill façade was meticulously designed to complement both neighbouring façades while resonating with the broader historical context. The three side-by-side townhouses, which occupy the new space, animate the new façade.

Brick facings were chosen as the primary building material for the infill façade to ensure that the character of the adjacent buildings was respected. The facings were supplied in a muted off-white tone to reduce visual impact and emphasise the play of light and shade. These facings were designed to fit into a brick railing system on the slanted walls. This infill façade is heavily articulated to increase fine detail and visual interest. The result is a striking blend of historical integrity and contemporary architecture that harmonises with its environment while offering a fresh visual appeal.

Manufacturer — PGH Bricks & Pavers

Product — Morada Linear - Blanco; Avante Brick System

Builder & Contractor — Hansen Investment Group Australia

Photographer — Martin Mischkulnig

Horbury Hunt Commercial Entrants

 = New Entrant 2024

Yukeembruk ANU by Bates Smart



Manufacturer — Bowral Bricks
 Product — Bowral 76 - Simmental Silver & Brahman Granite
 Builder — Richard Crookes Constructions
 Contractor — CTR Pacific
 Photographer — Felix Moonceram



Lifestyle Communities Clubhouse Woodlea by DKO



Manufacturer — Nubrik
 Product — Artisan - Avalanche
 Builder — Jardon Group
 Contractor — Brick by Brick
 Photographer — Chris Manton



Cox Adelaide Studio by Cox Architecture

Manufacturer — Bowral Bricks
Product — Bowral 76 - Chillingham White
Builder — Shape Constructions
Photographer — Timothy Kaye

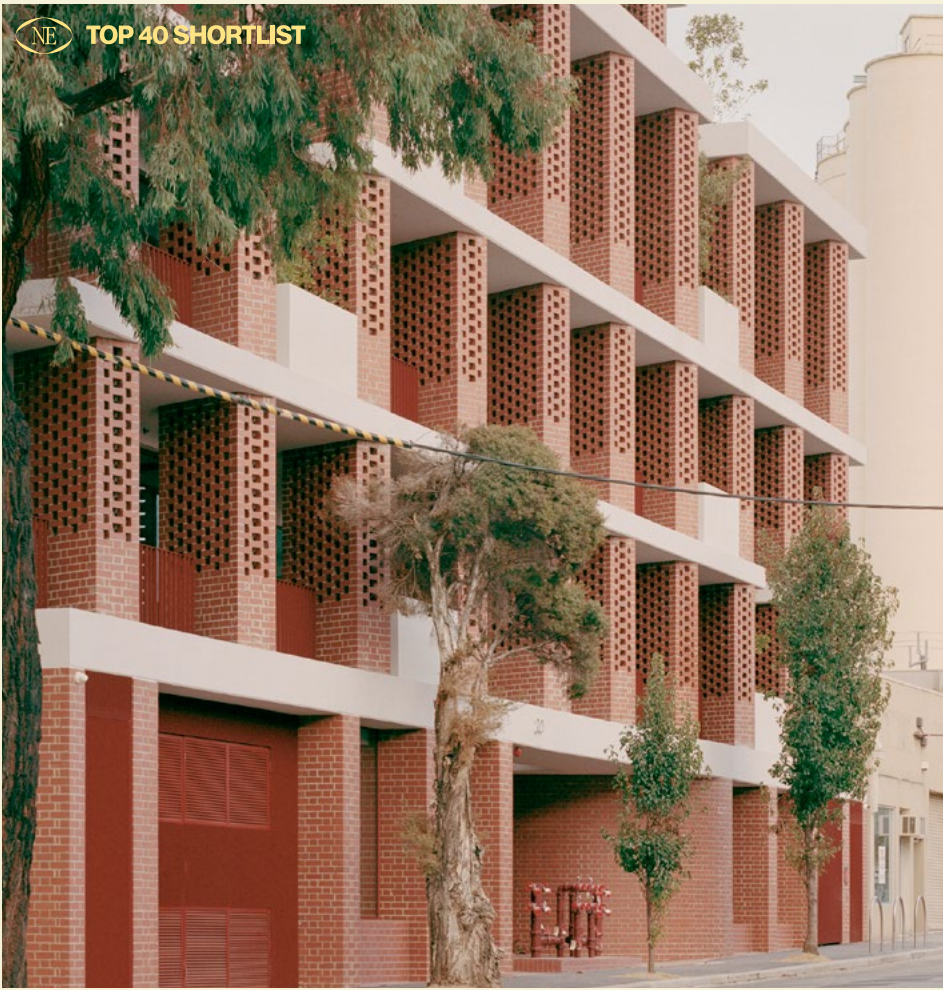
Wangaratta District Specialist School by Sibling Architecture



Manufacturer — Nubrik
Product — Pressed Bricks - Acland Cream & Chapel Red
| Daniel Robertson - Overland - Traditional Huon
| Austral Bricks - Access - Stone
Contractor — Oasis Scaffolding and Bricklaying
Photographer — Derek Swalwell



TOP 40 SHORTLIST



Bruce Street by Carr

Manufacturer — Nubrik
Products — Pressed Bricks - Chapel Red;
Thin Bricks - Chapel Red
Builder — Brickworks
Contractor — Brick by Brick
Photographer — Rory Gardiner



Pleiades Court by Kreis Grennan Architecture



Manufacturer — Bowral Bricks
Product — Bowral 76 - Gertrudis Brown
Builder & Contractor — Strategy Constructions
Photographer — Andreas Bommert

Kurraba Residences by SJB

Manufacturer — Nubrik
Product — Traditional - Domain Terracotta
| Empire Brik - Rail System
Builder — Richard Crookes Constructions
Contractor — Aspec Masonry
Photographer — Tom Roe



Atherton Hospital Redevelopment by Peddle Thorp



Manufacturer — PGH Bricks & Pavers
Product — CORIUM Cladding System - Primrose Glazed, Orange Glazed, Red Glazed, Blue Glazed, Alton Grey Smooth Semi-Glazed, Bally Buff Red Smooth, Brown Smooth, Pebble Stone Grey & Cobalt Blue
Builder — FKG Group
Contractor — Interline
Photographer — Andreas Bommert

Clifton Hill Primary School by Jackson Clements Burrows Architects

Manufacturer — Krause Bricks
Product — Standard Brick Range - Autumn
Builder & Contractor — Kapitol & Figurehead
Photographer — Peter Clarke





TOP 40 SHORTLIST

Nightingale Marrickville by SJB

Manufacturer — PGH Bricks & Pavers
 Product — Simply Hamptons - Fresh White
 | Bowral Bricks - Bowral 76 - Gertrudis Brown
 Builder — CD Construction
 Contractor — Able Bricklaying
 Photographer — Tom Roe

The Evelyn Apartments by Schmidt & Pang Architects



Noma Residence by Plus Architecture



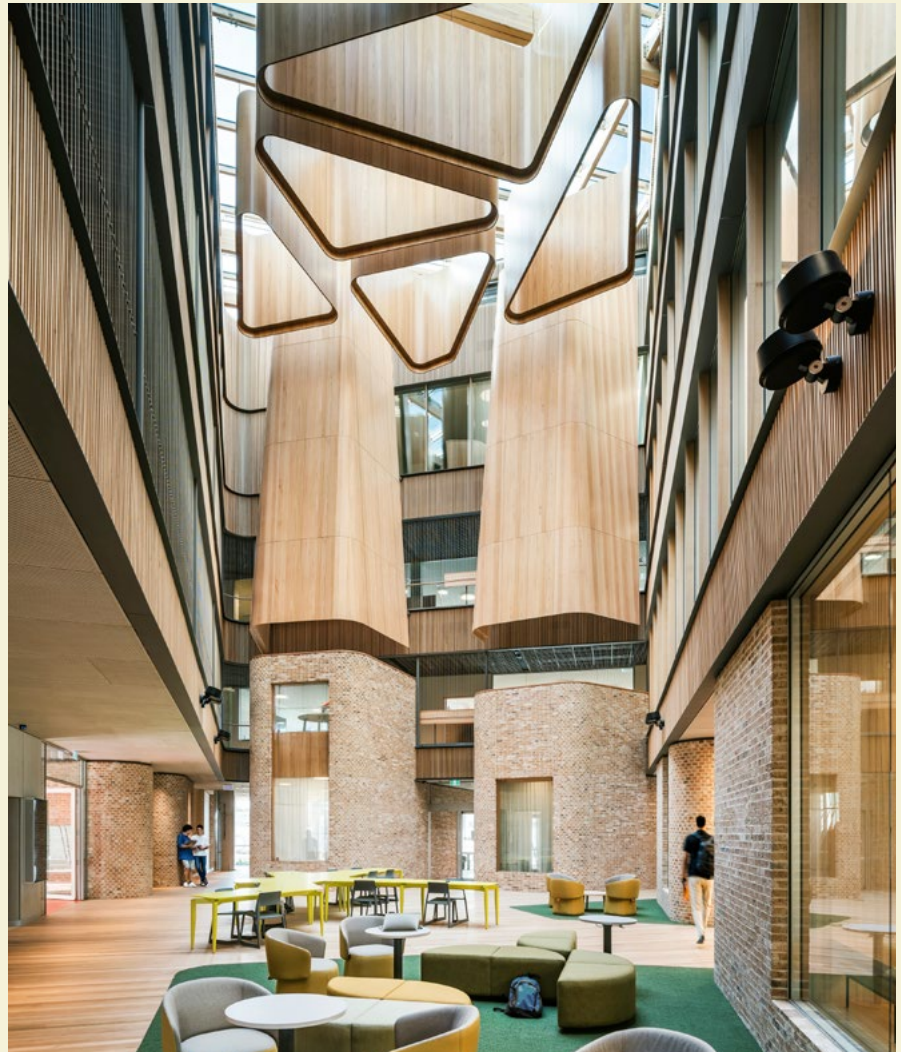
Manufacturer — Austral Bricks
 Product — La Paloma - Castellana
 | Krause Bricks - Emperor 380 mm - Ghost, Grampians Blue,
 Smoked Terracotta, Sandstone & Volcanic Grampians
 Builder — Kappacon
 Photographer — Michael Kai

Manufacturer — Midland Brick
 Product — Revival Brick Collection - Heritage Blend
 Builder — PACT Construction
 Contractor — PWD Construction
 Photographer — Dion Robeson

Peter Scullin Reserve Changing Places Facility by k20 Architecture



Manufacturer — Bowral Bricks
Product — Bowral 76 - Chillingham White
Builder — Simbuilt
Photographer — Gallant Lee Photography



Rivers Edge by Wardle

Manufacturer — Daniel Robertson
Product — Overland - Rugged Huon 50 mm
Builder — Fairbrother
Contractor — All Brick Tasmania
Photographer — Adam Gibson

Cedar on Collins by Kennedy Associates Architects



Manufacturer — Austral Bricks
Product — Governors - King; Sculptured Sands - Opaque
Olivine and Opaque Calcite; Wilderness Design - Grey Gum
Builder — Orwell Constructions
Contractor — City Bricklaying
Photographer — Brett Boardman

St Gregory's Campbeltown Multi-Purpose Building by Bow Gould Architects



Manufacturer — Bowral Bricks
Product — Bowral 300 - Capitol Red
Builder — Morabuilt
Contractor — AK Brick Construction
Photographer — Sara Vita

CHAC Primary Administration
by Reddog Architects & Blueline Architecture



Manufacturer — Bowral Bricks
Product — Bowral 76 - Chillingham White
| PGH Bricks & Pavers - Smooth - Black and Tan
Builder & Contractor — SJ Higgins
Photographer — Rix Ryan

Accolade
by C. Kairouz Architects

Manufacturer — Bowral Bricks
Product — Bowral 76 - Chillingham White
Builder — Merkon Constructions
Photographer — Mitch Lyons





Leatherback Sports Pavilion by Lee Syminton Architects

Manufacturer — Austral Bricks
 Product — Burlesque - Indulgent White; Camilla -
 Glazed Rosado & Azure | Bowral Bricks - Bowral 76
 - Brahman Granite & Chillingham White
 Builder & Contractor — Bistel
 Photographer — Peter Bennetts

Hampden by Rob Mils Architecture & Interiors

Manufacturer — Krause Bricks
 Product — Emperor 230 mm - Ghost Grey
 Builder — COBILD
 Contractor — Melbourne Masonry
 Photographer — Mark Roper



Cygnia Waters Residences by MJA Studio



Manufacturer — Austral Bricks
 Product — San Selmo Smoked - Wild Storm
 | Bowral Bricks - Bowral 76 - Bowral Blue
 Builder — Daly & Shaw Building
 Contractor — Creative Bricklaying
 Photographer — Dion Robeson

King William Street by Cox Architecture



Manufacturer — PGH Bricks & Pavers
 Product — Avante Brick System - Dry
 Pressed Architectural - Mowbray Blue
 Builder — Built
 Contractor — Ranieri Group
 Photographer — Peter Clarke



Kiora by KHA

Manufacturer — Bowral Bricks
 Product — Bowral 50 - Chillingham White
 Builder — Jaxon Construction & PACT Construction
 Contractor — Efficient Bricklaying
 Photographer — Nicholas Putrasia

Redlands Satellite Hospital by Fulton Trotter Architects



Manufacturer — Austral Bricks
 Product — Mineral Contours - Feldspar
 Taupe & Mineral Sand
 Builder — Hutchinson Builders
 Contractor — FTF
 Photographer — Hutchinson Builders



Mosman High School by Woods Bagot

Manufacturer — Bowral Bricks
 Product — Bowral 50 - Bowral Blue,
 Renovation Gertrudis Brown & Brahman
 Granite | Austral Bricks - La Paloma - Azul
 Builder — Multiplex
 Contractor — Aspec Masonry
 Photographer — Trevor Mein

TOP 40 SHORTLIST



ADGE Hotel by Tzannes & Team2 Architects

Manufacturer — Bowral Bricks
 Product — Bowral 76 - Bowral Blue & Simmental Silver
 Builder — Hutchinson Builders
 Contractor — Aspec Masonry
 Photographer — Ben Guthrie

02

HORBURY HUNT
RESIDENTIAL



Pippins by Webster Architecture & Interiors
Manufacturer — Krause Bricks
Products — Emperor 380 mm - Ghost Grey
Builder — Mazzei
Contractor — JW Brick and Block
Photographer — Timothy Kaye



WINNER — HORBURY HUNT RESIDENTIAL

Burnt Earth Beach House

By Wardle

Burnt Earth Beach House replaces a dilapidated beach shack at the end of its operational life in the coastal town of Anglesea in Victoria. It's a multi-generational home that utilizes terracotta in two primary forms - through the exterior brickwork, internally to line walls and floors and joinery elements. Having owned the property for several years, a deep and specific understanding of who the house was for and how it would be used gave the conceptual design true form. The established eucalypt to the north of the site provided a focal point for the arrangement of the primary living spaces.

The colour and tonality of the cliff edges in Anglesea are expressed in the use of an invented brick. The extensive and evolving brick making process involved extrusion and hand tearing the brick surface prior to cutting which exposes a raw, rough-hewn texture. A series of glazing experiments applied to raw clay before single firing are revealed in different sections of the building. A single fall of the roof across the plan ends in a low point where a terracotta clad spout discharges water onto a massive rock. Unglazed bricks blend to green and brown glazed bricks which broadly align with the extensive planting of coastal banksias surrounding the property.

Manufacturer — Krause Bricks
Product — Custom Extruded Glazed Bricks
Builder — Spence Construction
Contractor — Reid Bricklaying
Photographer — Trevor Mein











“The colouration of the bricks was developed to reference the local environment of the Anglesea area. The cliff colours, but also the flora and fauna have come under consideration and shaped the colouration that has been used on the glazes. Burnt Earth Beach House is an amazing kind of experimentation in expressing brickwork in a totally fresh and individual way.”







Naples Street House

By Edition Office

HIGHLY COMMENDED — HORBURY HUNT RESIDENTIAL // BRUCE MACKENZIE LANDSCAPE









An outer brick skin wraps over the folded roof, and down into the open social heart of this home for three generations of the one family. It is experienced spatially as a cycle of change and of rising and falling forms as its occupants live and circulate around the central garden room. Utilising the forms of the folded roofline, views are curated so that only the sky and neighbouring trees are encountered from within the house where an intimate relationship to the context of light and sun and seasonal change is found.

The home's orientation combined with the central garden room allows the northern sun to penetrate into the living spaces during winter, passively warming the thermal mass floors, while remaining naturally cool during summer. The house allows cross flow ventilation to all spaces via the central courtyard.

Externally, the house presents a uniform skin of brick cladding which wraps the outer walls, over the folded roof, and down into the central courtyard. This singular material presents the house as a carved solid, and formally mimics the urban diagram of the low-slung pitched roof forms of the original interwar houses of the neighbourhood. Selection of specifically sourced bricks as the primary building material brings enormous longevity, allowing the house to begin with a small carbon footprint and to then remain in place for many generations to come. Direct collaboration from the builders, the manufacturer and developer allowed for resolution of the complex detailing of the custom brick clad roof.

Manufacturer — Bowral Bricks
 Product — Bowral 76 - Simmental Silver
 Builder — Format Group
 Contractor — Brick Link
 Photographer — Tasha Tylee



Glen Iris House

By Pandolfini Architects

HIGHLY COMMENDED — NEW ENTRANT AWARD
FINALIST — HORBURY HUNT RESIDENTIAL

Built on Boonwurrung & Woiwurrung country of the Kulin Nations, the Glen Iris House has been conceived as a composition of three-dimensional objects which extend throughout the interior and exterior of the building. A contrasting palette of raw and finished materials accentuates the resultant forms and create a sense of permanence and solidity.

The house is composed of three pavilions which step down along the contours of the long rectangular site. A barn-like structure forms the main living space in the centre of the property and is bookended by brick clad forms which contain bedrooms at the front and a car workshop at the rear. Glazed links connect the pavilions, accentuating their material and formal differences and contributing to a sense of journey as one moves through the site.

The brick clad volume of the first floor cantilevers out over the screen and balances on a bush-hammered concrete blade, indicating the primary entry and hinting at the materials and forms within. Terracotta bricks, laid vertically and on a 45 degree angle, reference the tiled roofs of the adjacent houses and create a dynamic backdrop for the dappled light – filtered through the established street trees – to dance across. Compositional simplicity, bold materiality and intricate detailing define the Glen Iris House. The home presents as a sculptural addition to the eclectic streetscape, its abstract façade providing little indication of what lies within where a series of communal and private spaces are linked by their celebration of form and material.

Builder — Dome Building Projects
Photographer — Rory Gardiner











FINALIST — HORBURY HUNT RESIDENTIAL

High Street

By Lineburg Wang

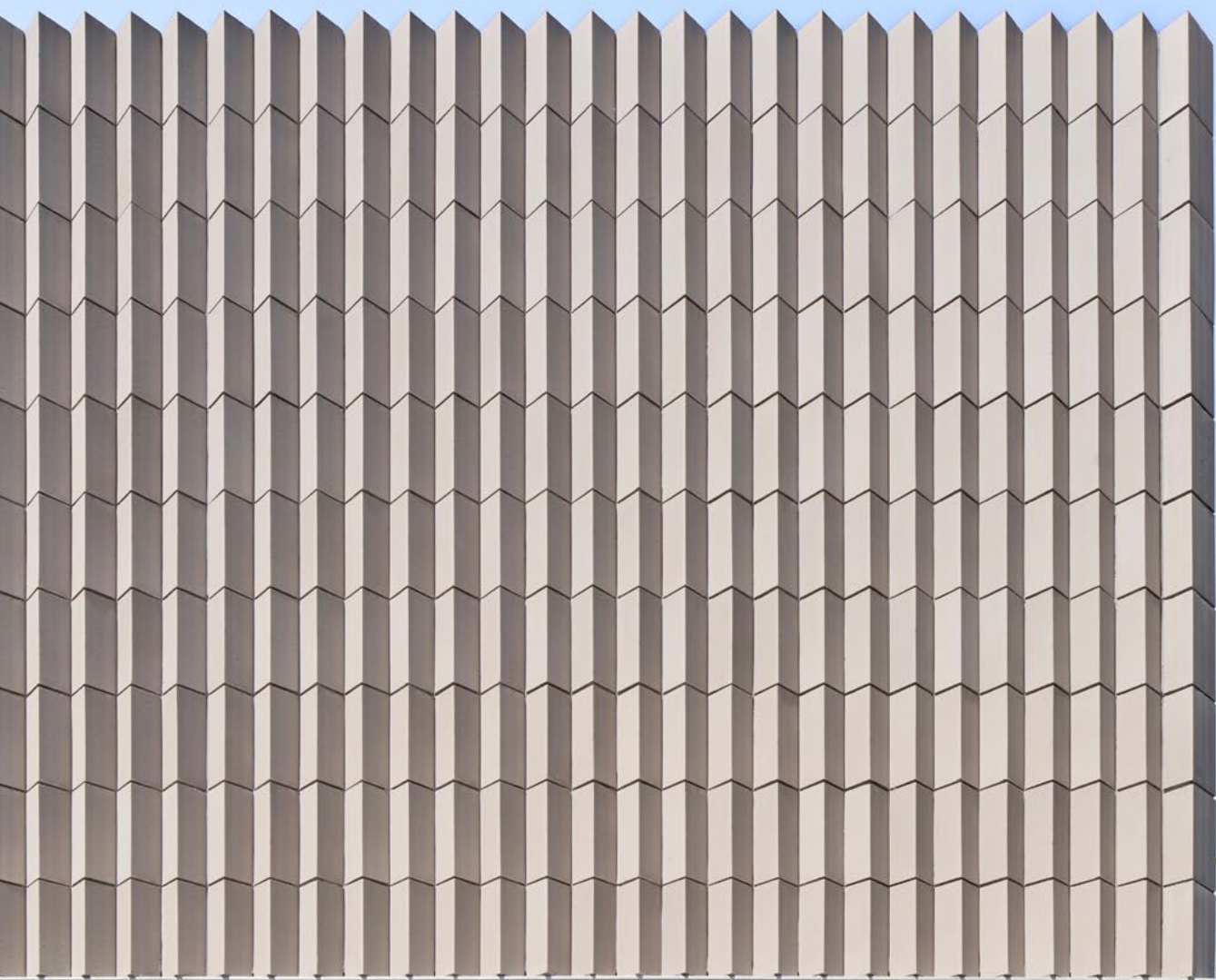
A tiny Worker's Cottage on a compressed site, the project works hard to not feel small. The project builds fewer rooms in order to find generosity in a single, special public room. As a young couple completing their studies, the budget was small, though the brief was to make something enduring. To cater for a range of events as their lives change, the public room is designed for adaptation and flexibility with no fixed obstructions to dictate the type of function or how many people it can entertain.

The site sits immediately adjacent an overland flow path, encouraging dilapidation of timber and tin construction. The cottage fell into disrepair this way, an important aspect of the brief to be enduring and low maintenance, leading a response to raise the extension a half-level above natural ground in masonry, the split-level between floors of the cottage. With doors open, the internal and external public space operate as one, a single larger room, sharing the same materiality.

On a tiny site, the courtyard walls edit out the closeness of neighbours and break to invite long borrowed views to an adjoining green belt. The house feels generous, invited long views through to backyard gardens gives the impression of a more expansive site. Materials are traditional and honest, selected for their appropriateness.

Used sparingly, the brick walls house glass bricks as light fittings, stone slabs are used entirely, offcuts become the kitchen splashback or the welcome mat at the entry door.

Manufacturer — Bowral Bricks
Product — Bowral 76 - St Pauls Cream
Builder — Struss Construction
Contractor — Trevor Close Bricklaying
Photographer — David Chatfield





Peak House

By Emma Tulloch Architects

FINALIST — HORBURY HUNT RESIDENTIAL // NEW ENTRANT AWARD





Manufacturer — LOHAS
Product — Piera Eco-Ceramica Modern Bricks - Custom Brick
Builder — Visioneer Builders
Contractor — Hawthorn Brick and Block
Photographer — Peter Clarke Photography

Conceived as a conceptual response to the site's historical brick covenant, Peak House flipped and challenged the traditional weight-bearing rectangular identity of conventional brickwork to better represent the aspiration for a unique family home. At a contextual scale, the dwelling appears as an abstract form amongst some prominent examples of heritage architecture in the street. Closer, the design development of three individual peaked custom brick shapes creates nuance, practicality and privacy screening turning the corner.

Peak House responds to a number of key site characteristics as inspiration for what would become the main features in the design. The significant elm tree that is an important neighbourhood landmark was dutifully protected and shaped the basement spatial planning and curved dining area architecture. Privacy and consideration to the surrounding properties was another inspiration that drove the concept for window screening. The screen brick design extrapolated the cladding across the windows to maintain the abstract monumentality of the façade. With varied spacing these bricks feature an inverted-V inner face allowing intrigue, light and views.

Peak House offers an investigation into an alternative way of using brick, with its statement skin a true collaboration between our trusting clients and the skilled project team of engineers, brick manufacturers, builders and especially the craftsmanship of bricklayers to produce a robust, tactile and timeless family home.





FINALIST — HORBURY HUNT RESIDENTIAL

Mygunyah by the Circus

By Matt Gibson Architecture + Design

Conceptually the project is split up into a series of 3 pavilions - the original heritage object, a second pavilion interpretive of the original and a third ground-level pavilion containing a dedicated family room providing connection to front and rear gardens. Brick makes up the predominant material internally and externally. Chosen for its contextual connection with the existing building, the forms of the new pavilions are inspired by the arts-and-crafts themes of the immediate neighbour and the heritage context – steep roof pitches, asymmetry, exaggerated chimneys and the considered use of brick. Simplified and abstracted, these elements add idiosyncrasy, familiarity and comfort.

This informality is continued internally with a relaxed robustness utilising similar historical devices in contemporary ways - an enlarged inglenook fireplace and feature inbuilt window seat between inner and outer skins of cavity brick that also conceals mechanical systems, allows for intimate moments of domestic ritual. Materials preference natural colour, honesty and texture - internal brick walls with celebratory movement joints and hand-pressed terracotta brick floor tiles recall historic materials conveying a relaxed-yet-crafted interior.

The project involved extensive consultation with the manufacturing team who were the supplier but also a close collaborator in the crafted and innovative use of the material, providing a point of difference unique to this project including the implementation of brick roofs and use of carbon neutral bricks. The result is highly customised, designed as a robust backdrop to this family's life and one that delights in the experience of materials and story of old-and-new.

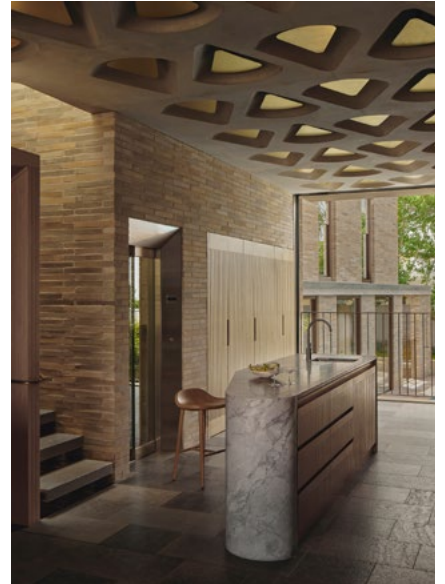
Manufacturer — Daniel Robertson

Product — Traditional - Buff Blend | Austral Bricks - La Paloma - Romero

Builder — Overend Constructions

Contractor — We Brick Vic

Photographer — Derek Swallow



FINALIST — HORBURY HUNT RESIDENTIAL

Sandringham House

By Tonkin Zulaikha Greer

Sandringham House is a split-level home for intergenerational living that responds to an exposed southerly aspect and its sandy surrounds. Across the road from Lady Robinson Beach, between the mouth of the Cooks and Georges River in Botany Bay, the house is sited on a narrow block with a north-south orientation. Expressed in sand toned brick, the house speaks to the surrounding wind-swept dunes. The curvilinear cutaway achieves massing that responds to post-war brick bungalows lining the street. This combination of sand dune and brick bungalow were the driving conceptual framework for the house. The integrity and conceptual clarity of the house extends from its massing to its detail.

Sustainable initiatives were central to the integrity of the design including the brick brise soleil on the western façade as well as photovoltaic solar panels, a state-of-the-art Ground Sourced Heat Pump and an EV charging port. The house is fully electrified and has been designed to operate off the grid.

A 'forever home' for the client, the Sandringham House was designed with longevity and sustainability in mind. All cost decisions were based on selecting materials, in particular bricks, that did not require a finish and that had the longest possible lifespan, to weather the strong southerly winds of Botany Bay.

Manufacturer — Krause Bricks

Product — Grey Brick 50 mm - Smoke Grey

Builder — IGS

Contractor — Peter Abourharb

Photographer — Cieran Murphy





Harriet's House is a small but bold extension to a single storey Georgian Cottage. In contrast to the cottage's absent volume and spatial homogeneity, the new generous and over scaled room introduces height and an element of surprise. The project explores the spatial potential of coupling a simple floor plan with an unexpected, delightful section and highly crafted material palette. The resulting room oscillates between restraint and whimsy.

Like the plan, the exterior is simple, a rectangular volume with two glazed openings. The simplicity of the form allows the brick detail to hero in the composition. The fine corbeling and red brick datum reference the cottage's formal Georgian façade. The existing architecture, like the new, juxtaposes restraint and delight.

The street elevation is almost without decoration yet the recessed wall panels flanking the door provide a moment of Regency sophistication. The masonry detailing speaks to a method of decoration that is inexplicably connected to the character of the material rather than applied to it. The brick defines the capacity for movement, the push and pull.

Harriet's desire for privacy and retreat drove the project. The site was exposed and overlooked. The architecture employs thick brick service and storage walls to edit the neighbouring properties and focus the plan towards the garden. The site was then cut and reformed into a tumbling, 'high pile' native carpet. The selection of a locally made brick for the floor and courtyards grounds the project and connects it to Country.



Manufacturer — Austral Bricks
 Product — Access - Ash; Yarra - Richmond
 Builder — Anstie Constructions
 Contractor — Tim Preece
 Photographer — Sean Fennessy

FINALIST — NEW ENTRANT AWARD

Harriet's House

By So. Architecture





FINALIST — NEW ENTRANT AWARD

Gable Park

By Weaver+Co Architects

Challenging residential norms this new dwelling in Melbourne's western suburbs initiates connections between occupants, pedestrians, public parkland and private gardens; blurring and enlivening spaces on both sides of the threshold. Forms, materials and colours borrow from the surrounding context while carefully articulated planning and details provide a contemporary response for family life.

The brief called for a new family home, one that celebrated its proximity to the park, using natural materials and a soft colour. Ground floor living spaces are planned around a central north facing garden courtyard which opens through to the street and the park beyond. Bedrooms and bathrooms on the first floor have window openings facing the street set back deep within a screened gable roof form. The applied colour palette is delicate, drawing inspiration from adjacent rooftops and the verdant hues of the nearby park. Colours and materials were selected to connect to the surrounding context and fit comfortably in place. Locally made bricks provide a grounded and solid presence which is balanced with finely detailed elements, including expressed gutters and downpipes.

The collaborative working process between architect, client, builder and consultants proved highly effective and adaptable, allowing the project to run smoothly.

Manufacturer — Krause Bricks

Product — Emperor 380 mm - Ghost

Builder & Contractor — CBD Contracting Group

Photographer — Tasha Tylee



Horbury Hunt Residential *Entrants*

NE = New Entrant 2024



Warwick Brick House by Marc & Co

Manufacturer — Bowral Bricks
Product — Bowral 76 - Embassy Red
Builder — Bespoke Constructions
Contractor — Campbell Bricklaying Co
Photographer — Christopher Frederick Jones



Clifton House by Anthony Gill Architects

TOP 40 SHORTLIST

Cremorne Courtyard House by Beauty Bloody Bonza

Manufacturer — Nubrik
Product — Pressed Bricks - Chapel Red
Builder — Dome Building Projects
Contractor — Wills Masonry (Formally
Brick & Mortar Bricklaying)
Photographer — Dion Robeson



The Bromley by Dalecki Design

Manufacturer — Midland Brick

Product — Commons

Builder — Limitless

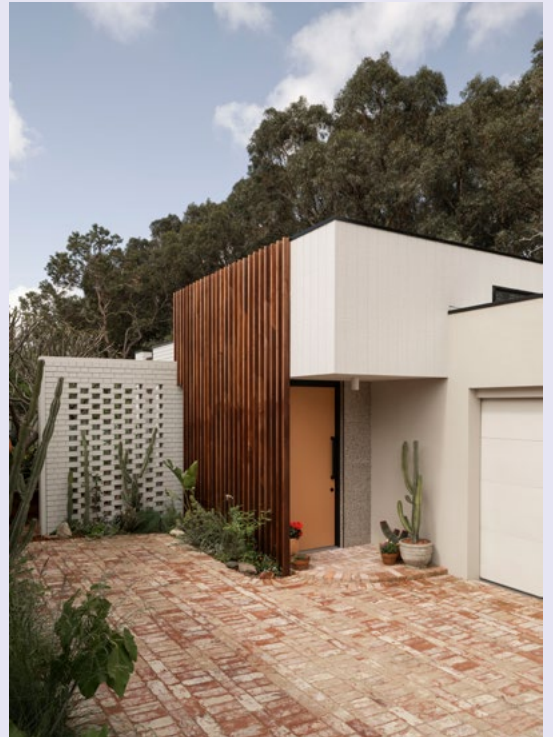
Manufacturer — Midland Brick

Product — Lloyd Wright Brick Collection - Kansas Sunset

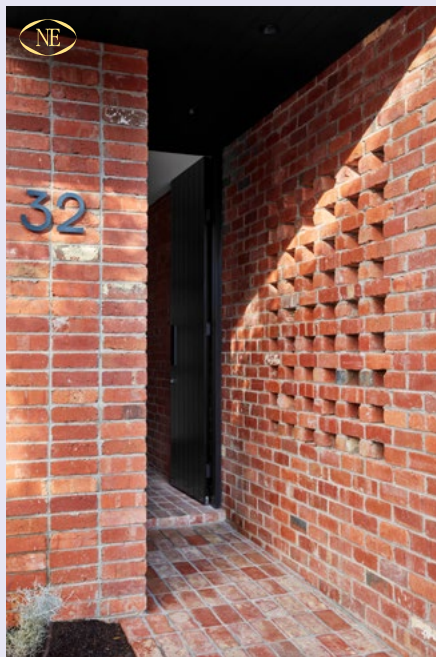
Builder — Robert Plumb Build

Contractor — B R Masonry

Photographer — Rory Gardiner



Small House by R Architecture



Product — Recycled Brick

Builder — Haven Constructions

Contractor — Melbourne Wall Solutions

Photographer — Jack Lovel



The Alma by Dalecki Design

Manufacturer — Midland Brick

Product — Classic Range - Red Smooth

Builder & Contractor — Element Construction WA

Photographer — Dion Robeson

Six-Ways House by Kennedy Nolan



Manufacturer — Austral Bricks
Product — Indulgence - Praline
Builder — Ben Thomas Builder
Photographer — Derek Swalwell



Manufacturer — Krause Bricks
Product — Emperor 380 mm - Ghost Grey
Builder — Mazzei
Contractor — JW Brick and Block
Photographer — Timothy Kaye



Pippins by Webster Architecture & Interiors

Pymble Residences by Anna Vaughan Architects



Manufacturer — Robertson's Building Products
 Product — Petersen Tegl Brick - Colour D70
 Builder — Beaches Custom Construction
 Contractor — RDT Bricklaying

Hill Courtyard House by Kelder Architects



Manufacturer — Bowral Bricks
 Product — Bowral 50 - Chillingham White
 Builder & Contractor — Siera Group
 Photographer — Brock Beazley Photography



South Yarra House by Pandolfini Architects

Manufacturer — Krause Bricks
 Product — Emperor 380 mm - Ghost
 Builder — Dome Building Projects
 Contractor — Wills Masonry (Formerly
 Brick & Mortar Bricklaying)
 Photographer — Rory Gardiner

PR Residence by Inglis Architects



Builder & Contractor — Lowther Builders
 Photographer — Derek Swallow

Black Box by Archaea



Manufacturer — PGH Bricks & Pavers
Product — Morada Linear - Nero
Builder — Quigley Building
Contractor — Trew Stone Contractors
Photographer — Derek Swalwell

James Street by Taylor and Hinds Architects

Manufacturer — Bowral Bricks
Product — Bowral 76 - Bowral Blue
| Austral Bricks - Metallix - Graphite
Builder — Anstie Constructions
Contractor — Tim Preece
Photographer — Adam Gibson



Project Acacia by Arli Homes



Manufacturer — Bowral Bricks
Product — Bowral 50 - Chillingham White; Bowral 76 - Chillingham White
Builder — Arli Homes
Photographer — Timothy Kaye



Paddington Pairing by Studio P Architecture & Interiors

Manufacturer — LOHAS
Product — Piera Eco-Ceramica Roman Handmade Bricks - Blanco
Builder & Contractor — Prepared Projects
Photographer — Tom Ferguson

Hurlstone Park House II by Carla Middleton Architecture



Manufacturer — Bowral Bricks
Product — Bowral 76 - Simmental Silver
Builder — JMichael Constructions
Contractor — No Worries Bricklaying
Photographer — Tom Ferguson

Alba - Clovelly Beach House by studioplusthree



Manufacturer — Krause Bricks
 Product — Pressed Bricks - Ghost Grey;
 Custom Curved Bricks - Ghost Grey
 Builder — Robert Plumb Fix
 Contractor — Simon McVey
 Photographer — Tom Ferguson

Not a Motel by Pleyzier Perkins



Manufacturer — Bowral Bricks
 Product — Bowral 76 - Chillingham White
 Builder — KleeV Homes
 Contractor — M.B. Brick + Block Laying

South Terrace Renovation by Chan Architecture and Sanders & King

Manufacturer — Austral Bricks
 Product — La Paloma - Miro
 Builder & Contractor — KleeV Homes
 Photographer — Tatjana Plitt



Estoban by HAL Architects

Manufacturer — PGH Bricks & Pavers
 Product — Morada - Ares
 Builder — Hezzelie Homes
 Contractor — Mark Edmund Bricklaying

Exeter House by ess lifestyle



Manufacturer — Austral Bricks
 Product — Vintage Mash
 Builder — Gibraltar Construction
 Contractor — Cosgrove Block and Bricklaying
 Photographer — ess lifestyle

KEVIN BORLAND MASONRY

Whipbird by Minnow Studio
Manufacturer — Natural Brick Co
Products — Lutyens Bricks - Custom Charcoal
Builder & Contractor — Zerni Projects
Photographer — Traianos Pakioulakis

03

This award was previously part of the Horbury Hunt Award in 2013, evolved to include concrete masonry. In 2014, this award was named after renowned Australian landscape architect Bruce Mackenzie AM.

Bruce Mackenzie is responsible for some of Australia's greatest landscape projects, spanning over five decades. He has designed numerous Australian landmarks and has won many design awards, highlighting his great contribution to the landscape design community. In 2011, he wrote and published *Design With Landscape*, his fifty-year journey through landscape architecture. Mackenzie was a founding member of the Australian Institute of Landscape Architects (AILA) and has been a state and national president. He was presented with the AILA Award in Landscape Architecture in 1986, and in June 1999 on the occasion of the Queen's Birthday Honours list, he was made a member of the Order of Australia (AM).



Firme

WINNER — KEVIN BORLAND MASONRY

The Warehouses

By J.AR Office

Located in a Currumbin industrial estate, The Warehouses reformulates the light industrial building, guided by strong civic ambitions with aspirations to persist for generations. The precinct materialises from a selective edit and unification of four existing structures, the extensive use of concrete block integral to this union.

The resulting brief was driven by the client's desire to produce a socially conscious precinct that ultimately asked, 'How can a commercial building adapt to the evolving community's needs?' Pragmatically, the site required a robust, low maintenance, thermally comfortable and flood-resilient structure that can persevere through future adverse weather events.

The resilience of grey blockwork is directly expressed in the building's envelope, with a 2400 mm masonry datum grounding the structure to site.

Manufacturer — National Masonry
Product — Standard Grey Block - 150 Series
Builder — HKNK
Contractor — Impact Bricklaying
Photographer — David Chatfield

HIGHLY COMMENDED — NEW ENTRANT AWARD











"The Warehouses creates a true social setting and creates this through the use of an off-the-shelf product, the grey concrete block, but then develops it with a sense of sensitivity and softness, creating the places to meet and congregate for both occupants and guests."







Casa Piva

By B.E Architecture

HIGHLY COMMENDED — KEVIN BORLAND MASONRY
FINALIST — BRUCE MACKENZIE LANDSCAPE





Casa Piva sits discretely hidden off a quiet laneway, taking its cues from the owners' Italian origins and is reflected in the sensibility of the approach rather than a more obvious interpretation. Built around a series of inwardly oriented walled courtyards to maximise privacy, it utilises a singular use of masonry chosen for its shape, texture, and ability to patina over time.

Bricks are laid with colour matched, flush struck mortar, creating a softer, patchwork like surface, perceived more as a singular material than a construction of individual parts. At random intervals, bricks have been cut to smaller sizes, and some turned back-to-front, revealing a darker surface to create an end result that implies an older sense of natural imperfection and history in its appearance. The experience is more akin to a rural building or monastery than an inner-city dwelling.

The design uses time-honoured brick traditions in its vertical soldier course parapets and voussoir brick, deep arches which utilise a matching capping block to emphasise a deeper brick proportion and heft to the building construction. The building's main façade, a playful interaction between two arches used in different directions.

The limited, yet raw palette of materials extends internally enveloping the main living space. Forming part of an overall brick-walled courtyard it's separated only by a line of frameless-glass to the external terrace. Its use allows a soft texture and play of light elevating the overall space and embracing the subtle rawness of the chalk toned brickwork.

Manufacturer — National Masonry

Product — Designer Block Range - Smooth Face Alabaster

Builder — JGF Creative

Contractor — Hawthorn Brick and Block

Photographer — Timothy Kaye





Eyrie House

By Matt Williams Architects

Eyrie House is a new residence on a very steep slope at the top of Mount Rumney, with a spectacular outlook over Pittwater and southeastern Tasmania. Seeking to contrast and emphasise the rugged landscape of the site, the design consists a series of horizontal datums and clean, folded forms.

Due to the steep site and limited access, the standard hill-house plan was inverted, to locate the garage at the top with the residence below. This then presented the design opportunity of how occupants access the house from the upper-level entrance. The masonry block was chosen for its dimensional consistency, allowing bricklaying to confidently lay long horizontal and vertical patterns with millimetre precision. The smooth finish was chosen for its matte uniform appearance - allowing the surfaces to simultaneously appear crisp and soft.

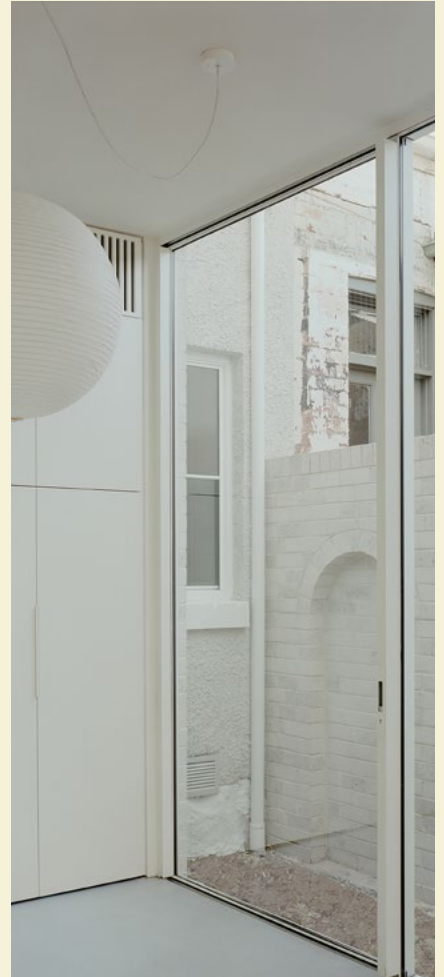
The work is a testament to a bricklayer looking to push the limits of their skill and the material. The blocks were carefully mitred to create the pleated faces and very acute angles of the entry porch; fixed to the ceiling of the void to complete the monolithic volume; and meticulously stacked within the residence. While the blockwork walls and ceiling are striking upon entry, once inside the residence they provide a calm, solid backdrop to the home, allowing the spectacular outlook to take centre-stage.

Manufacturer — GB Masonry
 Product — GB Smooth - Porcelain
 Builder — DS Building
 Contractor — Saxby Bricklaying
 Photographer — Adam Gibson

FINALIST — KEVIN BORLAND MASONRY // NEW ENTRANT AWARD







Brunswick West House

By NARDEL Architects

FINALIST — KEVIN BORLAND MASONRY // NEW ENTRANT AWARD





Brunswick West House is an exercise in deceptive simplicity. What appears as a very narrow, low key, single-fronted terrace unfolds into a voluminous family home with distinct spatial experiences. Site constraints were flipped to become opportunities; through meticulous planning, every available millimetre between boundary walls was sought for maximal space and light.

Floor-to-ceiling glazing and artfully concealed skylights suffuse the house with a soft, all-enveloping light, which also highlights the raw attributes of a minimal, concise material selection of pale brick, timber, concrete, and honed limestone. In homage to the neighbourhood's history of brickwork, and with appreciation for brick's solidity, resilience and myriad possibilities for aesthetic expression, a contemporary brick addition is a juxtapositional complement to a restored heritage facade.

Manufacturer — Adbri Masonry
Product — Architectural Masonry - Architectural Brick
& Coloured Face Brick
Builder — Jobe Homes
Contractor — RCK Bricklaying & Matthew Hill Bricklaying
Photographer — Pier Carthew





FINALIST — KEVIN BORLAND MASONRY

Merricks House

By Aktis Architects

The original concept was half submerged into the rise of the landscape. As the concept navigated all the challenging conditions of site and budget, a contradictory strategy emerged. There seemed no reason to hide the building in the landscape. It was located in a rural setting, not in a natural forest. The building took on a monumental form of materiality and structure, anchored with unapologetic strength of presence into its landscape.

The building is composed of two interconnected raking roofs, each sitting above a masonry box. The spatial planning and a concrete and steel structure and framing system, give the building its visual strength and define the architectural language. The raw materiality of the structure continues in the treatment of both interior and exterior finishes which reflect the client's desire for raw and natural materials in lieu of plasterboard or painted surfaces. Masonry elements define the form of the building while timber is used extensively to inject richness and warmth into the interior spaces. Skylights and courtyards bring northern light into the building.

The plan provides for a linear configuration of spaces which eliminates circulation areas and corridors. The structural grid system creates a sense of order whereby the building sits in contrast to the landscape. The colonnade of columns, which run along the long face of the building, is separated by expansive windows which contrast to the strong masonry forms elsewhere.

Manufacturer — Adbri Masonry
 Product — Architectural Masonry - Smooth Stone
 Builder — Lexicon Constructions
 Photographer — Timothy Kaye



Latimer House

By Tobias Partners

FINALIST — KEVIN BORLAND MASONRY
// NEW ENTRANT AWARD

Manufacturer — GB Masonry
Product — GB Veneer Honed - Porcelain
Builder — Cumberland Building
Contractor — B R Masonry
Photographer — Justin Alexander

Latimer House in Bellevue Hill posed some interesting design challenges thanks to an unconventionally shaped site, and two existing Norfolk Pines on the front fence line.

The shape of the site and its east-west orientation drove the original siting and 'stepped' formation of the plan and form, allowing more of the building's façade to address and interlock with the adjacent garden spaces and orientate towards the north. The deliberate stepping of the plan resulted in some opportunistic vistas being opened up which are in turn flooded with natural light. This arrangement results in a simple composition of solid and void, architecture and landscape, harmoniously woven into one another in response to the specific functions of the spaces within.

The architects opted for materials that complement these outlooks, including expressed concrete and rendered brick that grounds the base, and timber cladding on the upper level to convey a sense of lightness.

Responding to the light and openness of the surrounding suburban setting, the external materiality comprises a deliberate composition of exposed concrete, rendered brick, and timber to create a calming and contemporary warmth and lightness. The architects aimed for a concise selection of materials arranged in a simple composition. By creating a clear structural framework and incorporating a rich yet restrained palette, they sought to achieve a harmonious balance between solidity, voids, warmth, and tactility.







Kevin Borland Masonry *Entrants*

NE = New Entrant 2024



Manufacturer — GB Masonry
Product — GB Smooth - Nickel
Builder — Trust Projects
Photographer — Tom Ross

Bonded House by C. Kairouz Architects



The Nest by Atlas Architects

Manufacturer — National Masonry
Product — Designer Block Range - Split Face Alabaster
Builder — JGF Creative
Contractor — Johnston Bricklaying & Paving
Photographer — Tess Kelly

Muylatina Child and Family Learning Centre
by Cumulus Studio



Manufacturer — Adlbi Masonry
Product — Architectural Masonry - Ivory Face Brick;
Grey Block - 200 Series
Builder & Contractor — Anstie Constructions
Photographer — Natasha Mulhall Photography

Epping Porcelain House by Vanessa Wegner Architect



Manufacturer — GB Masonry
Product — GB Smooth - Porcelain
Builder — M J Minard
Contractor — B R Masonry
Photographer — Tom Ferguson

Belmont View House by RT Architects



Manufacturer — Adbri Masonry
Product — Architectural Masonry - Coloured Face Brick Smooth Ivory
Builder — Trevaskis Builders
Contractor — McFarlane Bricklaying
Photographer — Dylan James



One Chalmers by Rothelowman

Manufacturer — GB Masonry
Product — Breeze Blocks - Wedge Porcelain
Builder — Infinity Construction
Photographer — Martin Siegner



Arch by Unique Built

Manufacturer — The Breeze Block Co
Product — Geo - White
Contractor — CAS Brick and Blocklaying
Photographer — Brock Beasley



Olivine Community Pavilion by Canvas Projects

Manufacturer — Adlbi Masonry
Product — Architectural Masonry - Designer Masonry Honed & Smooth Stone
Builder — Lloyd Group
Contractor — DCM Brick and Block
Photographer — Peter Bennetts

Whipbird by Minnow Studio



Manufacturer — Natural Brick Co
Product — Lutyens Bricks - Custom Charcoal
Builder & Contractor — Zerni Projects
Photographer — Traianos Pakioulakis



The Boatshed by Dalecki Design

Manufacturer — Austral Masonry
 Product — Engineered Stone - Honed Harvest
 Photographer — Dion Robeson



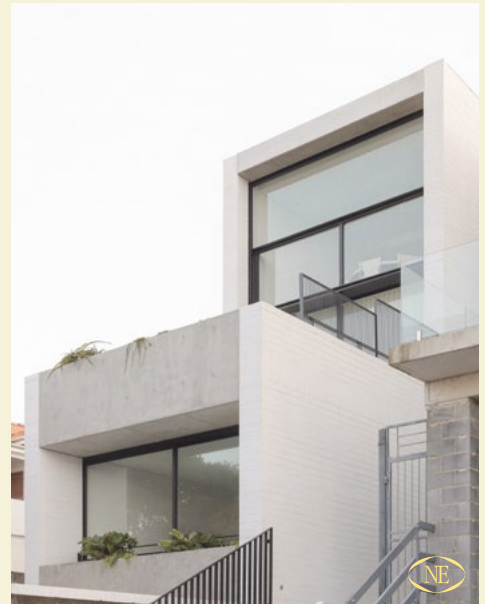
House in Surry Hills by Architect George

Manufacturer — Natural Brick Co
 Product — Lutyens Bricks - Limestone; Custom Circular Bricks - Limestone
 Builder — Marsh to Mansion
 Photographer — Martin Siegner



Rivière by Bates Smart

Manufacturer — GB Masonry
 Product — Breeze Blocks - Wedge Porcelain
 | Austral Bricks - La Paloma - Miro & Glazed White
 Builder — Rivière Construction
 Photographer — Cieran Murphy



Tamarama House by ess lifestyle

Manufacturer — GB Masonry
 Product — GB Smooth - Porcelain
 Contractor — Randwick Bricklaying Services
 Photographer — ess lifestyle

Doug Jennings Park at Moondarewa Spit by the City of Gold Coast

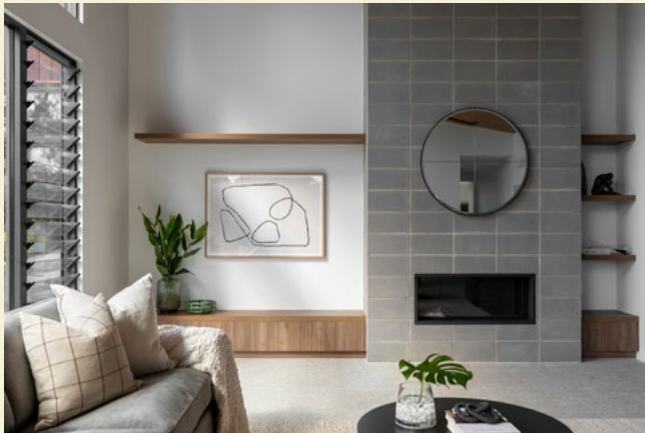


Manufacturer — National Masonry
 Product — Designer Block Range - Polished Pearl Grey
 Builder — Akela Constructions
 Contractor — Precise Masonry
 Photographer — New View Photography



Manufacturer — GB Masonry
 Product — GB Veneer Arcadia - Smokey Grey;
 GB Veneer Arcadia Sawn Face - Smokey Grey
 Builder — MOMO Property Group
 Contractor — Attena Group
 Photographer — Martin Siegner

Mather 1 by The Little Brick Studio



Manufacturer — GB Masonry
 Product — Breeze Blocks - Wedge Nickel; GB Smooth - Nickel
 Builder & Contractor — Beachstone Homes
 Photographer — Urban Angles

Bokarina Beach Homes Stage 4 by Hollindale Mainwaring Architecture

Manufacturer — National Masonry
 Product — Designer Block Range - Smooth
 Face Glacier; Breeze Blocks - Sea Breeze
 Builder — McNab Constructions
 Contractor — DNL Building Services
 Photographer — John Mainwaring





River View Nagambie by CBA Building Designers

Manufacturer — Adbri Masonry

Product — Slim Line Saw Cut Bricks - Ivory

Builder — CRC Constructions

Contractor — Trevor Prebble Bricklaying

Photographer — Anthony Webster



Yarra Ranges SDS by Architecture architecture

Manufacturer — Adbri Masonry

Product — Architectural Brick - Oatmeal

Builder — BowdenCorp

Contractor — Spiden Bricklaying

Photographer — Tom Ross

Whittlesea Early Parenting Centre by Brand Architects



Manufacturer — Adbri Masonry
Product — Architectural Masonry - Coloured Face Brick
Builder — Hutchinson Builders

Marnebek School Upgrade by ThomsonAdsett

Manufacturer — Island Block & Paving
Product — Designer Range - Dune Refined;
Premium Range - Mist ECO Refined
Builder & Contractor — Ireland Brown Company
Photographer — Ernesto Arriagada



Tweed Heads & Coolangatta SLSC - Stage 3 by Shane Denman Architects

Manufacturer — National Masonry
Product — Designer Block Range - Smooth
Face Almond, Glacier & Rust; Split Face Rust
Builder — Hutchinson Builders
Contractor — TDM
Photographer — New View Photography



BRUCE MACKENZIE LANDSCAPE

Robin House by Wolveridge Architects
Manufacturer — Adbri Masonry
Products — Turfgird - Charcoal
Builder & Contractor — Ongarelli
Photographer — Timothy Kaye

04

The Bruce Mackenzie Award, an integral part of the esteemed Horbury Hunt Award, underwent a significant transformation in 2013 when it expanded its scope to include the realm of concrete masonry. The decision to incorporate this versatile material reflected a commitment to recognising excellence and innovation within the landscape architecture and design community.

In 2014, the award took on a new identity, proudly bearing the name of the late renowned Australian landscape architect, Bruce Mackenzie. His legacy, marked by exceptional contributions to some of Australia's most iconic landscaping projects, including Ku-ring-gai and Glebe Bicentennial Parks, as well as the landscape construction of Sydney (Kingsford-Smith) International Airport, remains an enduring inspiration for the industry.

Spanning over five decades, Bruce Mackenzie's illustrious career was not only defined by his involvement in numerous recognized Australian landmarks but also adorned with various design accolades. His visionary work left an indelible mark on the landscape design community, showcasing a unique blend of creativity, functionality, and environmental sensitivity.

As we reflect on Bruce Mackenzie's profound impact on the field, it is with a heavy heart that we acknowledge his passing in January 2024. In honouring his memory, the Bruce Mackenzie Award continues to serve as a testament to his enduring influence on landscape architecture. Moving forward, we remain committed to recognising and celebrating outstanding achievements in the spirit of Bruce Mackenzie, ensuring that his legacy lives on through the individuals and projects that embody the same passion and dedication to the craft.



WINNER — BRUCE MACKENZIE LANDSCAPE

Boronggook Drysdale Library

By Antarctica : Architects & Architecture Associates

The Boronggook Drysdale Library is a new public building and community hub on the Bellarine Peninsula town High Street. It sits in the heart of the town at the central junction of the Bellarine bringing a much-needed public facility to a fast-growing regional population. It also makes an urban design contribution- filling the back of a suburban supermarket to form the backdrop to the town park and amphitheatre with a well scaled and weighted façade.

The design is a collaboration between the architects and architecture associates with the City of Greater Geelong as the client and project manager. The contractors carried out the construction contract and the bricklayers were contracted. The façades use three types of bricks produced or sourced in Victoria. This includes glazed bricks from two local manufacturers, as well as recycled reds and clinkers from a local reseller.

Manufacturer — Krause Bricks

Product — Bespoke - Glazed Bricks | Recycled Brick

Builder — AJ Nicholson

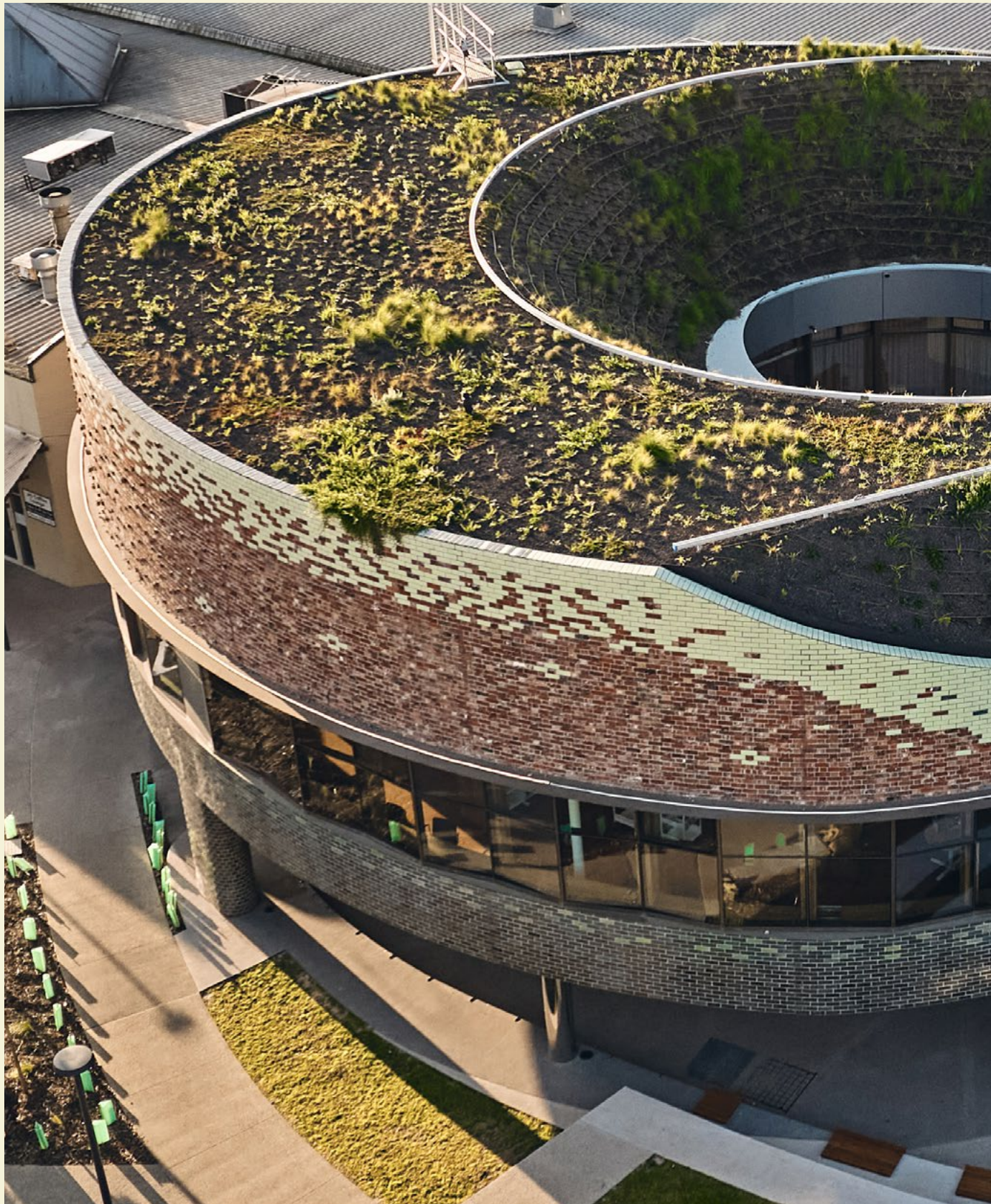
Contractor — Lawler Bricklaying

Photographer — Peter Bennetts

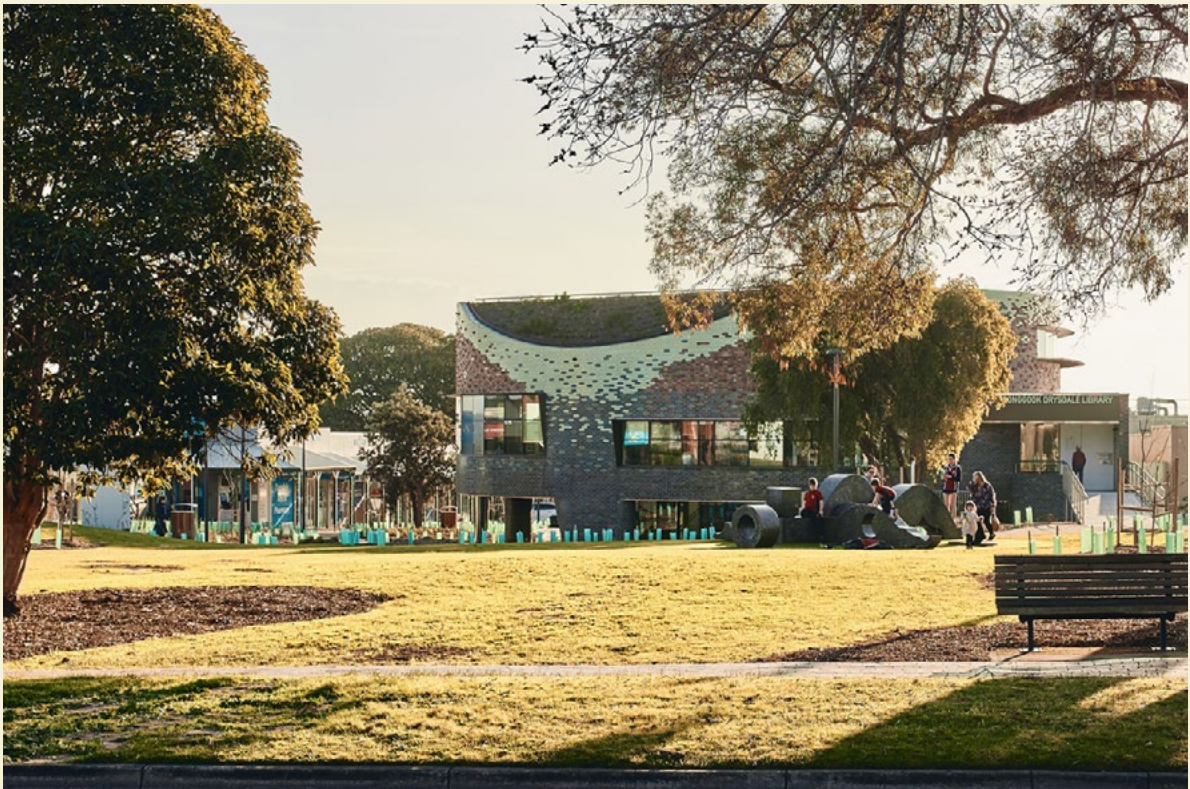
HIGHLY COMMENDED — NEW ENTRANT AWARD
FINALIST — HORBURY HUNT COMMERCIAL











“The library seamlessly integrates brickwork with the surrounding landscape, using a graphic approach that is deeply informed by the understanding of the local environment and its immediate context. Overtime this landscape will continue to mature and evolve, and in many ways, consume the architecture that will eventually merge as one.”

“The Jury loved the architectural detailing of the building and the roofscape, which is a really generous landscape space. It was blurring the boundaries of how landscape and architecture can sit together and how the façade and green roof element creates a cohesive experience for people using and viewing this element from all around.”





HIGHLY COMMENDED — BRUCE MACKENZIE LANDSCAPE

The Nursery on Brunswick

By Clare Cousins Architects

Previously home to the Fitzroy Nursery for over 40 years, locals have come to know and love this place as a verdant and open-air respite within the tough urban fabric of the high street. Now, The Nursery on Brunswick is a mixed-use building with retail, commercial and residential tenancies that all benefit from the red brick, north facing atrium garden at the centre of site.

Materially responsive to its heritage surrounds, The Nursery is constructed from traditional solid brick veneer instead of more commonly used brick slips. 70% of the terracotta bricks used for the project were repurposed from site. Using only second-hand bricks for the project significantly reduced the project's embedded carbon. Other sustainability initiatives included decommissioning of gas, rainwater collection, large solar array, and convenient bike storage for all tenants to encourage sustainable modes of transport.

Countering more typical yield-focused developments in the area, the atrium prioritises quality of amenity over maximum density, with its garden weaving through the site, giving residents and passing pedestrians a landscape oasis in the inner city.

Product — Recycled Brick

Builder — Marino Construction Management

Photographer — Tom Ross









Aru House

By Curious Practice

Named after the Awabakal word for 'insect', Aru House plugs-in a series of carefully balanced sensory amplifiers and connectors to an early twentieth century cottage in order for a long-ignored sense of place to re-emerge. Carried out in a way that respects the original fabric, alterations made are not radically different but gentle, considered and layered.

Typical of weatherboard inter-war period homes, the brick facade to the street was often a decorative feature, providing durability and visual appeal. An unsympathetic brick porch constructed after the Newcastle Earthquake has been replaced with an articulated facade emulating the original Arts and Crafts movement. The decorative entry brickwork threshold forms steps, entry 'rug', letterbox and public seat. The front fence and lawn have been replaced with a native garden, surrounding the brickwork with colour and biodiversity that transitions between the public and private realms.

The original brick fireplace was boarded up and plastered over but during demolition, the beauty of the weeping mortar chimney and twisting brickwork were unveiled and are now proudly on show. A new mantel and feature course brickwork repair damaged elements, respecting the traditional craftsmanship and bringing a new sense of monumentality to the interior.

The value of the project becomes measured in joy and delight through the way materials are crafted, light is choreographed and edges of the building are blurred. Consciously revitalising homes in this manner of promoting resilience ensures these buildings are loved, cherished, cared for and respected as they age gracefully in place and with life.

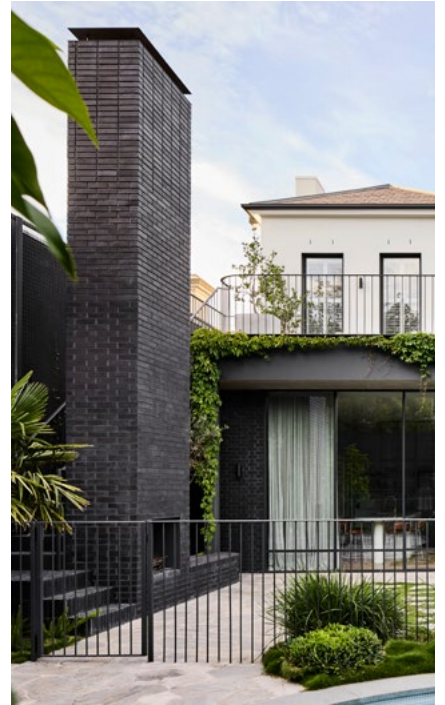
Manufacturer — Namoi Valley Bricks

Product — Architectural Range - Old Red Face | Recycled Brick

Builder — Built by Eli

Contractor — Matthew Oates

Photographer — Clinton Weaver



FINALIST — BRUCE MACKENZIE LANDSCAPE

Armada House

By Taylor Knights

Occupying a prominent corner site, Armadale house provided an opportunity to explore sensitive alterations and additions to a grand 1882 Victorian era home.

The strategy was to work within the logic of the original layout to minimise waste and expensive structural changes. Essential to the project brief was to establish adaptable zoning that would allow multi-generational living and flexibility within the floor plan. The design introduces a new entrance gate and stair to allow the family to move fluidly around the site and come and go independently. The new building form is detailed to emphasize the break between old and new; with a deliberate attempt to establish a harmonious and sympathetic relationship using masonry, traditional detailing and scale.

The addition is designed to feel solid and robust, and to tie into the original monolithic home. The use of concrete and the large playful opening highlights a more modern response while the brickwork wraps and unifies the designs.

The garage, boundary fence and rear veranda are reimagined as a singular brick entity, forming a courtyard garden at the heart of the site through strategic siting and thoughtful brick detailing, the built form harmonises with its context, providing both sanctuary for the inhabitants and respectful engagement to the street.

Manufacturer — LOHAS

Product — DongBoo Smoked Bricks

Builder — DIMPAT

Contractor — Evo Masonry

Photographer — Sharyn Cairns





Blackwood Doonan by Sarah Waller Architecture

Manufacturer — National Masonry
 Product — Gridpave - Charcoal
 Builder — Sarah Waller Building
 Contractor — Instyle Habitat
 Photographer — Alyne Media

 = New Entrant 2024



Robin House by Wolveridge Architects



Manufacturer — Adlbi Masonry
 Product — Turfgird - Charcoal
 Builder & Contractor — Ongarello
 Photographer — Timothy Kaye

Bruce Mackenzie Landscape

Entrants



Memorial Square Hurstville
by Place Design Group

Manufacturer — UrbanStone
Product — Commercial Paver Shot Blast - Granite
Bronze, Silver Grey, Silver Black & Gunmetal

Gully House by Andrew Burges Architects



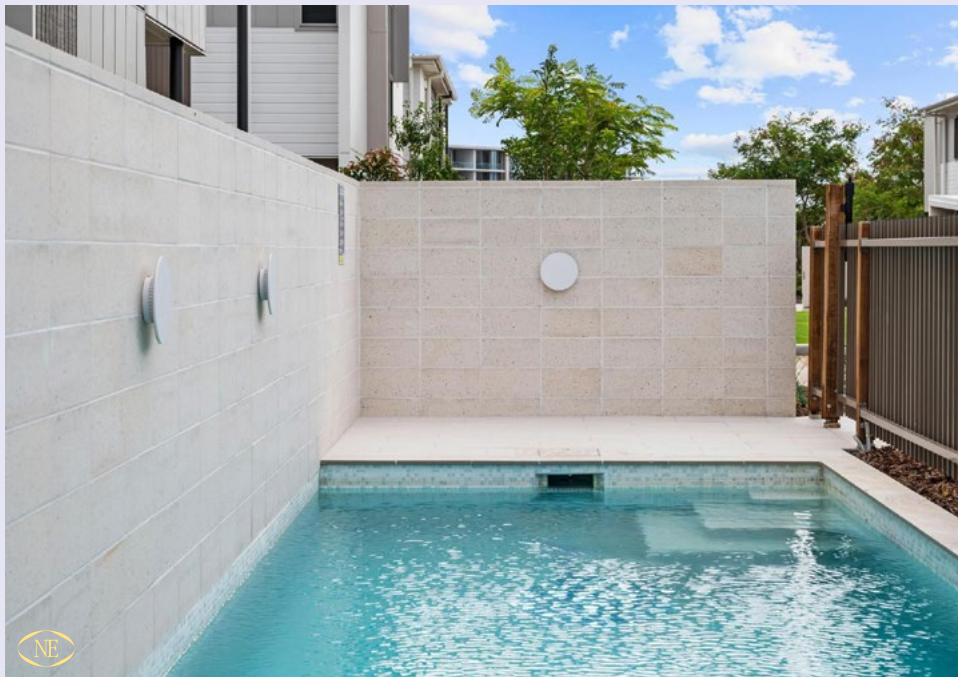
Manufacturer — LOHAS
Product — Piera Eco-Ceramica
Roman Handmade Bricks - Levante
Builder — Robert Plumb
Contractor — B R Masonry
Photographer — Peter Bennetts

Mount Street Pocket Parks, Stage 1 by GLAS Landscape Architects



Manufacturer — Austral Bricks
Product — Earth Range Paver - Taupe, Straw &
Firestone Red | Recycled Brick
Builder — GP Bluestone
Contractor — CMC Bricklaying & Anjik Bricklaying
Photographer — Drew Echberg

Asha Newport by Hollindale Mainwaring Architecture



Manufacturer — National Masonry
Product — Designer Block Range - Smooth
Face Glacier; Breeze Blocks - Sea Breeze
Builder — RCQ Constructions
Contractor — DNL Building Services



The Belvedere by KP Architects

Manufacturer — Austral Bricks
Product — La Paloma - Miro & Miro Comb
Builder — Rohrig
Contractor — Briz Masonry
Photographer — Scott Burrows

Manufacturer — Adbri Masonry
Product — Hollandstone 80 - Charcoal & Desert Sand;
Architectural Masonry - Designer Masonry Honed
Photographer — Sling Shot Studios

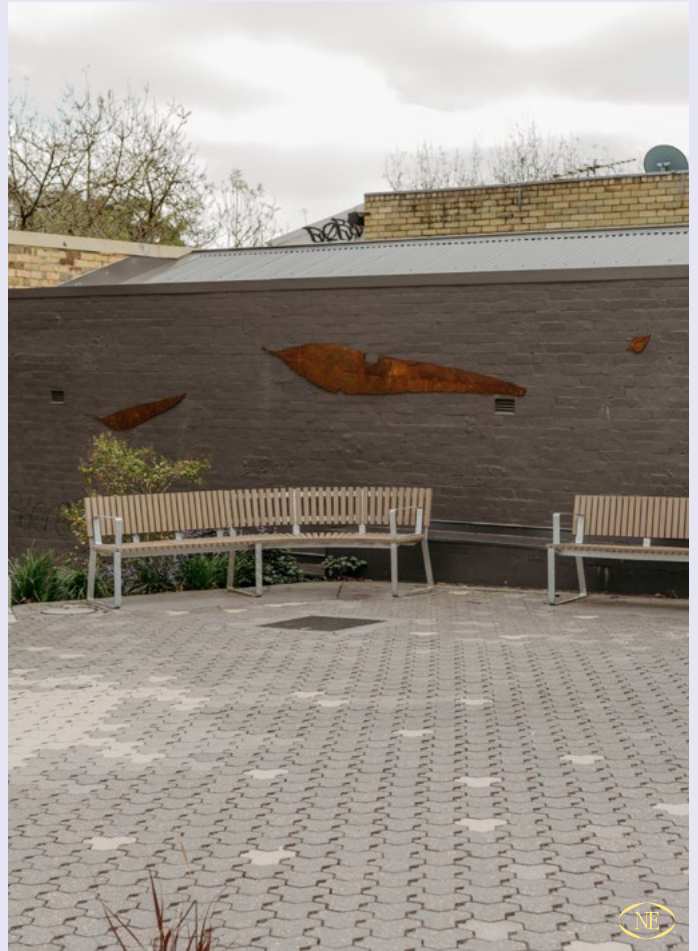
St John Bosco School by Edge Architects





Urban Realm by Wardle & REALMstudios

Manufacturer — Island Block & Paving
 Product — Pavers for the Future - Ebony ECO Refined,
 Mist ECO Refined and Pewter ECO Refined
 Builder & Contractor — The Baker Group
 Photographer — Nathan Hinds



Manufacturer — Adlri Masonry
 Product — Paving Trihex - Charcoal Standard,
 Charcoal Honed, Natural Standard & Natural Honed;
 Paving Ecotrihex - Charcoal Standard, Charcoal
 Honed, Natural Standard & Natural Honed
 Photographer — Rhiley Murphy

St Aloysius College by Playstreet



Manufacturer — Adlri Masonry
 Product — Paving Trihex - Charcoal
 Standard, Charcoal Honed, Charcoal
 Shotblast & Natural Standard
 Photographer — David Lennon

ROBIN DODS ROOF TILES



The Beehive by Raffaello Rosselli Architect
Robin Dods Roof Tile Excellence 2018 Winner
Builder — Groundup Building
Contractor — Callum Coombe
Photographer — Prue Ruscoe

05

The Robin Dods Roof Tile award category rewards innovation and craftsmanship in terracotta and concrete roof tiles and recognises the contribution of architects, builders, roof tilers and manufacturers in that process.

This award category includes commercial and residential built projects that exemplify outstanding craftsmanship and innovation through the use of concrete and terracotta roof tiles.

The Award is named after renowned architect Robin S. Dods, who lived in Brisbane and Sydney in the early 1900s. Robin Dods believed in sustainable design to suit the climate, especially in roofing. His distinctive style of gabled roofs for domestic dwellings, which combined passive solar design while allowing for ventilation and insulation, became prevalent all over Queensland. Some of his heritage-listed commercial projects that incorporate his distinctive style are the All Saints Memorial Church in Tamrookum and the Maryborough City Hall in Queensland.

WINNER — ROBIN DODS ROOF TILES

John XXIII College

By TRCB

The completion of Stage 1 of the campus master plan at John XXIII College (JTC) marks significant developments to the institution's infrastructure. Noteworthy enhancements include a reimagined entrance, strategically relocated buildings, and state-of-the-art administrative facilities designed to foster staff development and well-being. Additionally, the redesigned library now serves as a dynamic hub for student engagement, featuring versatile spaces and modern amenities.

Manufacturer — Bristle Roofing
Product — La Escandella - Planum Roja
Builder — Crothers Construction
Contractor — Bristle Roofing
Photographer — Rob Frith & Yijun Luo

A consistently applied material palette of blockwork and terracotta tiled roofs, consistently detailed, affords the campus a valued uniformity. The architects reimagined the use of these materials for the new and refurbished buildings of this project, to provide a new fine-grain to the College's infrastructure.

This project underscores the architects' dedication to providing a modern and dynamic educational environment, ensuring continued excellence in its delivery of quality education for the community. The successful delivery of this project was made possible through the collaborative efforts of the JTC community, including students, staff, and parents, whose input was invaluable throughout the design process. Together, a space has been created that inspires learning, fosters creativity, and upholds the College's esteemed legacy.









“John XXIII College demonstrates the diversity of the one product in the many different ways it can be used. It also looks at the way in which tiles can become precise elements where the material can become not only a roof but also a wall.”







Bellevue Hill House

By Tribe Studio Architects

HIGHLY COMMENDED — ROBIN DODS ROOF TILES



Manufacturer — Bristle Roofing

Product — La Escandella - Planum Roja

Builder & Contractor — Laycock Constructions

Photographer — Ben Hosking

Extrapolating from the existing architectural logic, the architects extended Bellevue Hill House on its own terms, using the ethos of the Arts and Crafts to be inventive with detail, to embrace narrative within the design and lean into eccentricity.

Arts and Crafts houses are characterised by their introspection and separation from their garden surrounds. The architects tried to invert this logic, opening out the original 'sleep out' verandah onto a large terrace that steps down into the garden. The strong sandstone plinth was extended to step down into the site, to create new rooms below and a variety of outdoor spaces. The original steep, gabled roof-form was extended to the north to house a new master bedroom. The ground floor between these two strong moves becomes new kitchen, dining and outdoor living space. As such the relationship between indoor and outdoor is fully transformed, without undermining the language of the original house. A rich material language was delivered in terracotta, shingle, roughcast render, brick and stone.

Restoration and replacement of some of the timber shingled surfaces, original eaves soffits and expressive purlin details were mapped and documented on site for "like for like" replacement. The original oak shingle roof was deemed inappropriate for reinstatement due to cost/longevity/thermal mass considerations. The Architect replaced these with a flat terracotta roof tile to reference the original shingles, but also tell the ongoing story of the house. The detailing is very contemporary, with an open ventilated edge, to reveal their newness in the heritage context.





FINALIST — ROBIN DODS ROOF TILES

Point Piper

By Giles Tribe

The original house was built in the Spanish Mission style and was most likely constructed in 1930. It had been named "San Dal Phon". The clients approached the architect with a request to renovate and extend the building substantially. The clients loved the Spanish Mission style and wanted to keep the appearance of the original building.

It was important not to change the look of the development and to keep the historical values. Original building elements were preserved or replaced with "like for like" where needed. When it came time to select the roof, the clients drew inspiration from the newly refurbished Bondi Pavilion. It was also important to pay homage to the Spanish Mission roof designs popular when the original home was constructed.

The clients should be commended for being brave in selecting a colorful custom blend when everyone else was selecting various shades of grey and black. Their bravery and commitment to keeping the home authentic paid off, and the finished home is a fabulous representation of a Spanish Mission home of early 1900's in Sydney's Eastern Suburbs.

Manufacturer — Bristle Roofing
 Product — La Escandella - Curvado Tossal,
 Trans Roja, Bottle Green, Azul & Cobalt Azul
 Builder — M & G Building
 Contractor — Greenfields Roofing
 Photographer — Alexander Mayes







FINALIST — ROBIN DODS ROOF TILES

Spanish Retreat

By Gembrook Roofing



The selection and specification process for this build was meticulously carried out. Situated adjacent to the owners' family-run business, this home holds special significance as it will be passed down to their children, becoming a cherished generational property.

Every material selected had consideration and purpose, from the limestone and terracotta exterior to the impressive recycled wooden trusses throughout the main living spaces. Nothing was left to chance. The client had very strong influences from both French provincial and Chinese terracotta designs. Due to these influences, selecting the roof was a simple decision. The distinctive shape and blended finish of the terracotta roof tiles evoked memories of travel to Europe and Asia.

With the added assurance of a lifetime colour warranty and a comprehensive selection of roof accessories that matched their vision, the roof tiles effortlessly created a seamless and captivating finish. As you approach the driveway, the expansive and impressive gabled roof line leaves an unforgettable impression.

Manufacturer — Bristle Roofing
Product — La Escandella - Curvado Hispania
Builder — Traikain
Contractor — Gembrook Roofing



FINALIST — ROBIN DODS ROOF TILES

Beatrice Road House

By Springate Homes

Nestled within the picturesque suburb of Dalkeith, the Beatrice Road house is a testament to thoughtful design and elegance. Its distinctive architectural character is demonstrated by the seamless incorporation of roof tiles as a defining element. The iconic mansard-style roof, featuring a steep 55-degree pitch, envelops the entire facade, lending a sense of grace and timelessness to the residence.

The choice of ceramic shingle roof tiles not only speaks to their durability and versatility but also to their aesthetic appeal, which undoubtedly contributes to the overall charm of the residence. The addition of curved dormer windows inset within the tiles on the front elevation further enhances the French architectural narrative, infusing the house with character and visual interest.

The installation of the steep roof design introduced a notable level of complexity, presenting a unique challenge during construction. Whether admired from afar or appreciated up close, the roof tiles serve as a captivating focal point, embodying a sense of enduring elegance and craftsmanship.

Manufacturer — Midland Brick Roof Tiles

Product — Designer Ceramic Shingle - Slate | LUTUM Roofing

Builder — Springate Homes

Contractor — Southmoor Roofing



Robin Dods Roof Tiles *Entrants*

 = New Entrant 2024

Hunters Hill by Milic Roofing and Construction



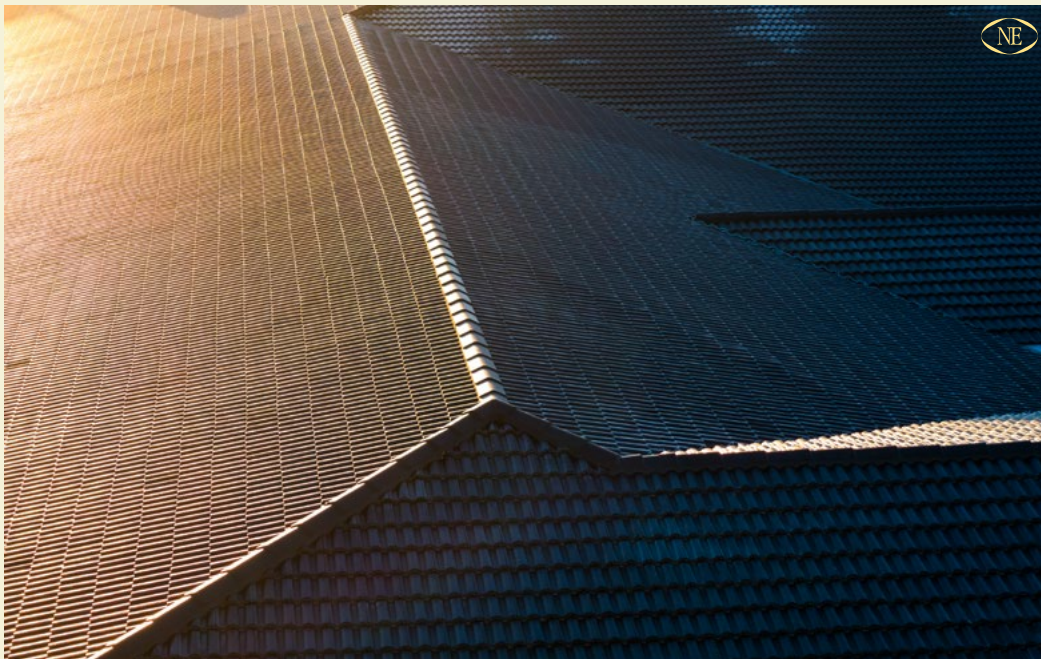
Manufacturer — LUTUM Roofing
Product — Shingle - Eclipse



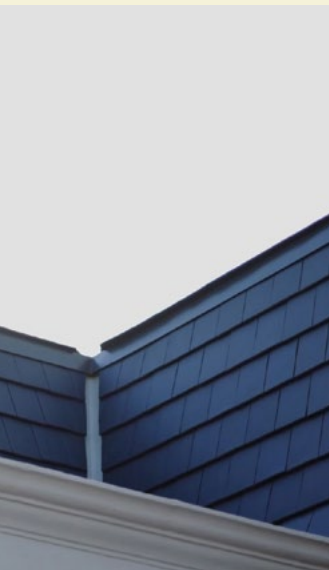
Steep Pitch Roofing by Concept 2 Completion

Manufacturer — Bristle Roofing
Product — La Escandella - Planum Caviar
Builder — Ramsay Builders
Contractor — Bristle Roofing

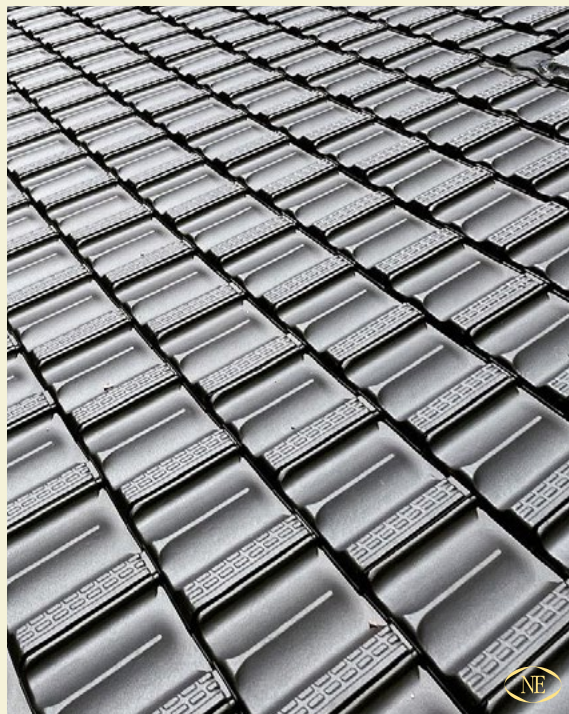
Mullaloo Village by Casm Construction



Manufacturer — Midland Brick Roof Tiles
Product — Villa - Artists Ink
Contractor — Point Break Roofing and Roof
Top Industries



Manufacturer — LUTUM Roofing
Product — French - Eclipse



Bonnyrigg Heights
by Milic Roofing and Construction

Cattai by IL New and Associates



Manufacturer — Bristle Roofing
Product — La Escandella - Planum Caviar
Builder — Griffiths Homes
Contractor — Shayne Bobbin Roofing
Photographer — Alexander Mayes



Manufacturer — LOHAS
 Product — Wienerberger Stormpan 44 - Cottage
 Builder — Lloyd Built
 Contractor — Tim & Terry Tilers
 Photographer — Simon Wood

Queens Park Residence by Anna Vaughan Architects

Hamptons Style Residence by Your Style Designer Home Additions



Manufacturer — LUTUM Roofing
 Product — Linea - Charcoal Grey

Modern Malvern by Inform Design



Manufacturer — Bristle Roofing
 Product — La Escandella - Planum Slate

Seaside Summer House by W Build



Manufacturer — Bristle Roofing
Product — La Escandella - Curvado Aitana &
Medio Curva Aitana

City Escape by Englehart Homes



Manufacturer — Bristle Roofing
Product — La Escandella - Curvado Tossal
Contractor — Gembrook Roofing

THINK BRICK

AUSTRALIA

National Members



State Member

Midland Brick

Regional Members



BOWRAL BRICKS



LITTLEHAMPTON
CLAY BRICKS & PAVERS

NAMOI VALLEY BRICKS

Associate Members





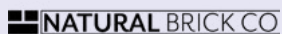
National Members



State Members



General Members



Associate Members



International Associate Member





National Member



State Member



Associate Member

